



United States  
Department of  
Agriculture

Foreign  
Agricultural  
Service

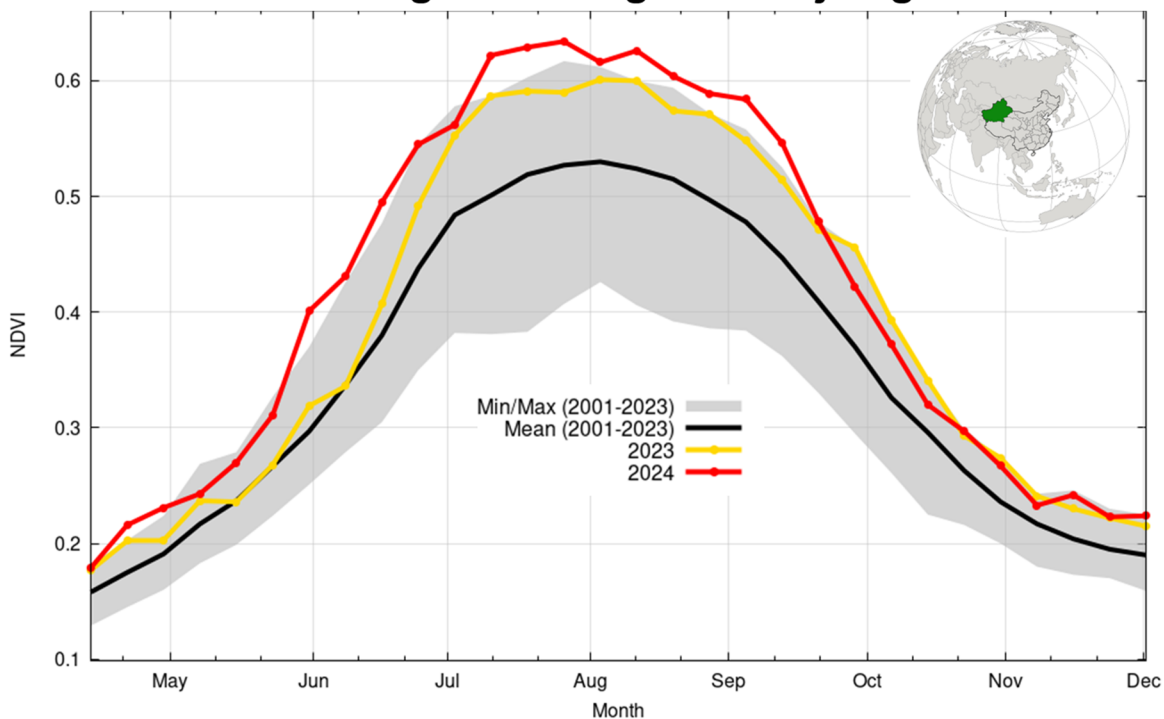
Circular Series  
WAP 01-25  
January 2025

# World Agricultural Production

## China Cotton: Production Increased Due to Higher Projected Harvested Area and Yield

USDA estimates China’s marketing year (MY) 2024/25 cotton production at 30.0 million 480-pound bales up 1.8 million bales or 6 percent from last month, almost 10 percent or 2.7 million bales from last year, and 6 percent from the 5-year average of 28.2 million bales. Area is estimated at 2.9 million hectares (mha), up almost 2 percent from last month and last year, but down 4 percent from the 5-year average of 3.02 mha. Yield is estimated at a record 2,252 kilograms per hectare (kg/ha), up 5 percent from last month, 8 percent from last year and 11 percent from the 5-year average of 2,034 kg/ha. Yield is significantly above the long-term trend as cotton area has shifted to the highly mechanized Xinjiang province, where yield is nearly double that of elsewhere in the country. Over 90 percent of China cotton is now produced in Xinjiang province. According to the Xinjiang Provincial Statistics Department, approximately 41 percent of cotton is produced by Xinjiang Production and Construction Engineering Corp and 59 percent is produced by the Local Cooperative System.

### China Cotton Vegetation Vigor in Xinjiang Province

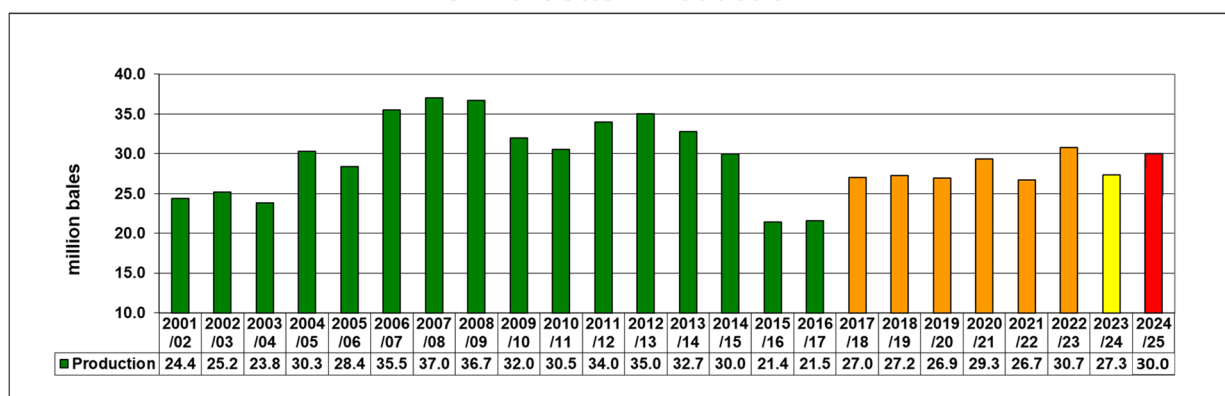


Source: USDA & NASA Global Agricultural Monitor (GLAM), MODIS Terra 8-day NDVI; ESRI Sentinel-2 land cover crop mask 2020.

Approved by the World Agricultural Outlook Board

The typical cotton growing season is April to October. In Xinjiang planting starts in April while in the Yellow River and Yangtze River basins, planting begins in late April and extends through May. The satellite-derived Normalized Difference Vegetation Index (NDVI) showed that crop conditions over the main cotton growing areas during the season were exceptionally favorable. The observations were also supported by a combination of national and regional crop condition analyses from FAS/Beijing. The MY 2024/25 season was generally characterized by favorable weather conditions and adequate irrigation water availability. In Xinjiang these conditions facilitated rapid planting, early crop establishment and development. The conditions were sustained into harvest resulting in record yields.

### China Cotton Production



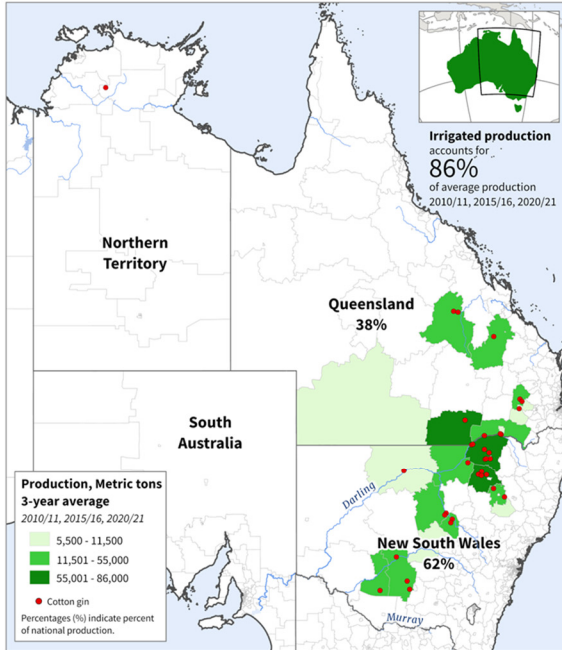
Source: USDA PSD Online

The year-to-year estimated 2 percent harvested area increase was primarily due to marginal area expansion in the major cotton producing province of Xinjiang. Farmers were also encouraged by the government’s continuation of the target price-based cotton subsidy. Regions outside Xinjiang continued to experience larger area reductions especially in the Yangtze and Yellow River basins. *(For more information, please contact [Dath.Mita@usda.gov](mailto:Dath.Mita@usda.gov).)*

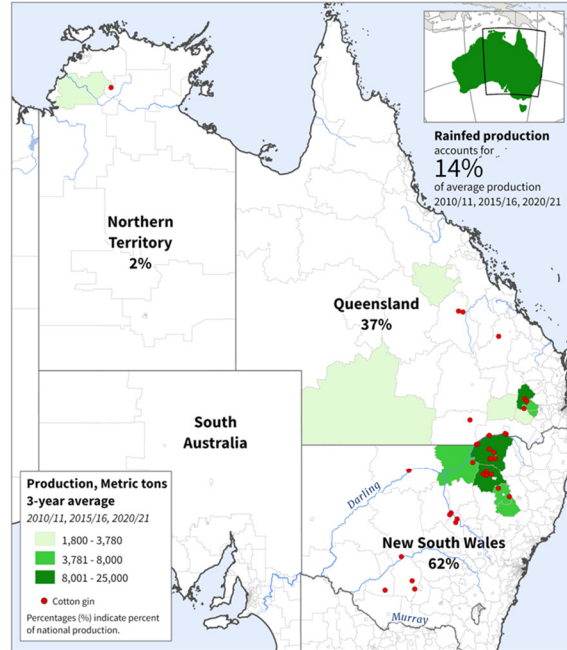
### Australia Cotton: Harvested Area and Production Up Due to Favorable Weather at Planting

USDA forecasts Australia cotton production for marketing year 2024/25 at 5.4 million 480 lb. bales, up 8 percent from last month, 8 percent from last year and 34 percent above the 5-year average. Harvested area is forecasted at 600,000 hectares, up 9 percent from last month, 19 percent from last year and 41 percent above the 5-year average. Yield is forecasted at 1,960 kilograms per hectare, down 1 percent from last month, 9 percent from last year and 7 percent below the 5-year average.

**Australia: Irrigated Cotton Production**



**Australia: Rainfed Cotton Production**



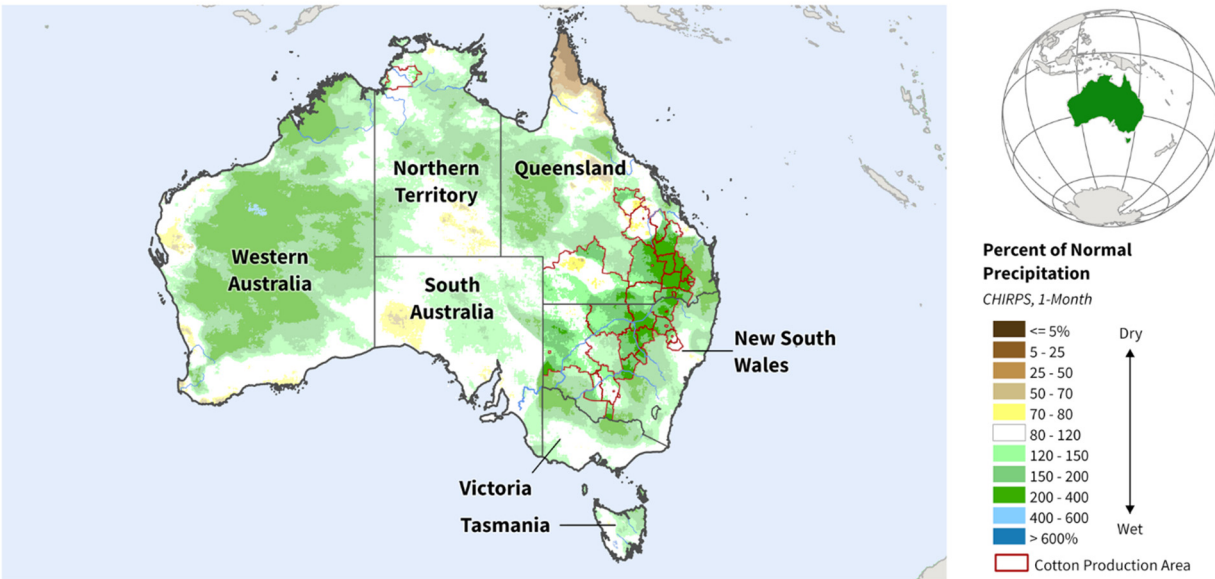
**USDA** Foreign Agricultural Service  
U.S. DEPARTMENT OF AGRICULTURE

Sources: Australian Bureau of Statistics, Agricultural Censuses of 2010/11, 2015/16, and 2020/21 (2021 SA2 Boundaries); Namoi Cotton; LDC Cotton; Queensland Cotton; Koramba Ginning; North West Cotton; Australian Food and Fibre; Carrington Cotton; Brighann Cotton; Southern Cotton; Carroll Cotton

Roughly 86 percent of the cotton grown in Australia utilizes irrigation for the water source. The other 14 percent is a dryland crop which is dependent on seasonal rainfall at the beginning of the season, thus leading to a variation from year to year in the amount of dryland cotton that is planted. Abundant rainfall in November 2024 led to increased water storage in the reservoirs for the irrigated cotton crop, as well as adequate soil moisture resulting in favorable conditions for planting the dryland cotton crop. These factors have encouraged farmers to plant more cotton.

**Australia: Percent of Normal Precipitation**

November 1 to 30, 2024 (1-Month)



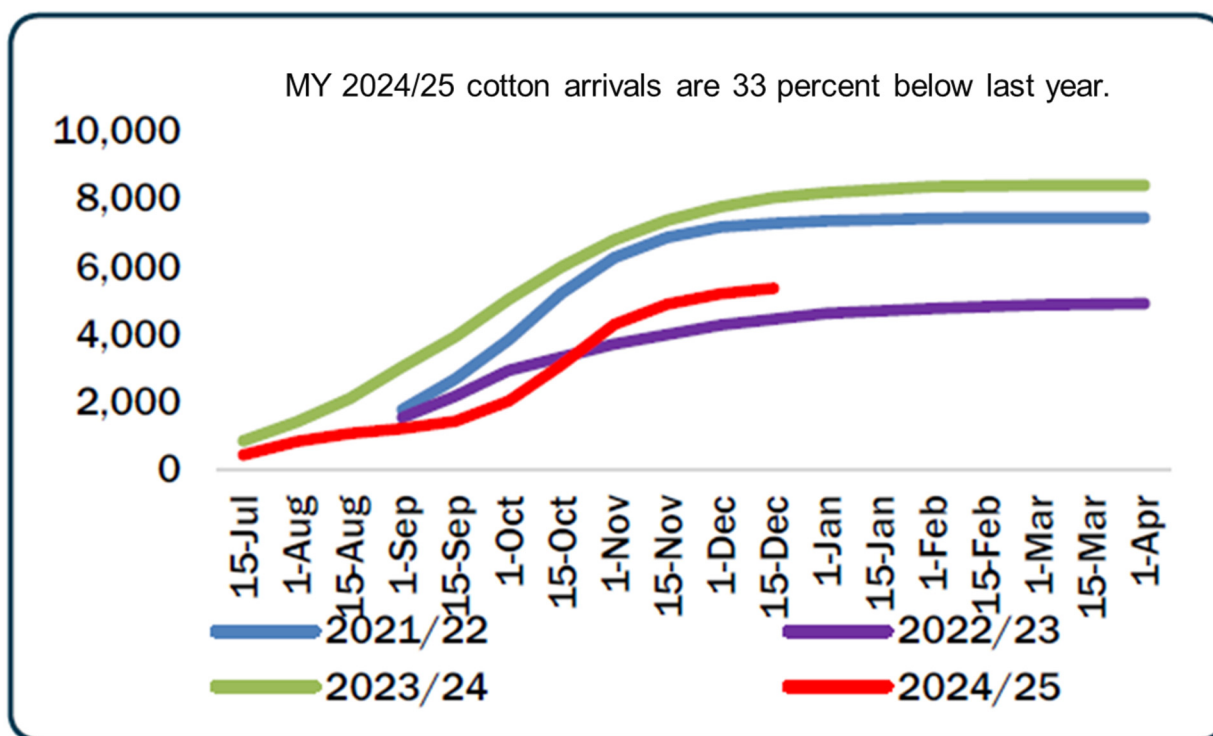
Sources: UCSB Climate Hazards Group InfraRed Precipitation with Station data (CHIRPS) Cumulative Precipitation Percent of Normal (Nov 1 to 30, 2024)

Cotton and sorghum are the two dominant summer crops grown in eastern Australia, predominantly in New South Wales and Queensland. Cotton planting starts in October and continues into early December. Harvest begins in March and typically ends by the end of April. (For more information, please contact [Shannon.Moyo@usda.gov](mailto:Shannon.Moyo@usda.gov).)

### Pakistan Cotton: Production Revised Due to Lower Arrivals

Pakistan cotton production for marketing year (MY) 2024/25 is estimated at 5.2 million 480-pound bales, down 26 percent from last year. The harvested area is estimated at 2.0 million hectares, down nearly 17 percent from MY 2023/24. The 17 percent area decline is due to farmers planting more profitable crops such as rice and corn. Cotton production is revised lower because of 33 percent lower arrivals. Yield is estimated at 566 kilograms per hectare, down nearly 11 percent from last year. The decline is due to less-than-ideal growing conditions, such as heatwaves at planting and wet conditions impacting growing conditions and harvest.

### Pakistan Cotton Arrivals (thousand lint equivalent bales)



Source: Cotton Outlook

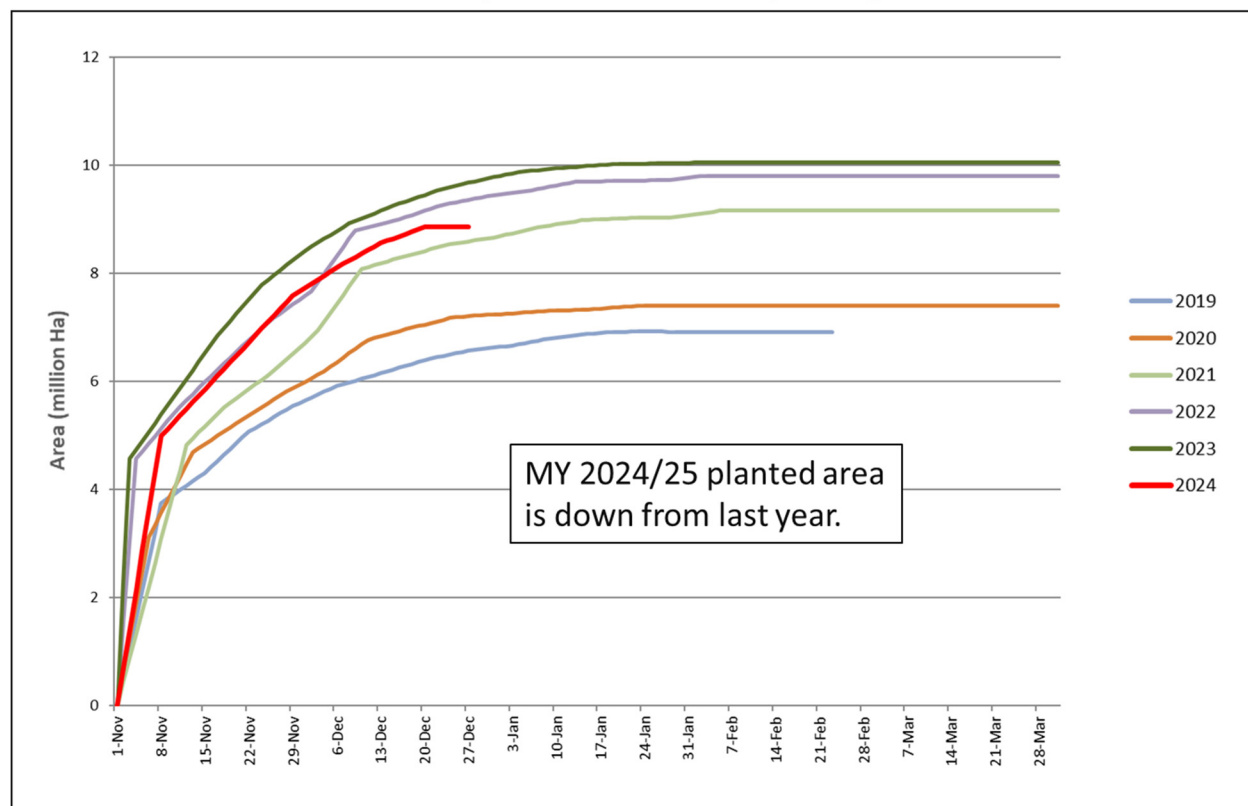
Cotton is planted from April through June and harvested from August through December. (For more information, please contact [Arnella.Trent@usda.gov](mailto:Arnella.Trent@usda.gov).)

## India Rapeseed: Production Forecast Down Due to Lower Area Planted

USDA forecasts rapeseed production for the marketing year (MY) 2024/25 at 11.6 million metric tons, down 4 percent from last month and unchanged from last year. The harvested area is forecasted at 8.9 million hectares, down nearly 4 percent from last month and last year due to farmers planting more profitable crops such as rice. Yield is forecast at 1.30 tons per hectare, up 4 percent from last year.

According to the India Ministry of Agriculture's press report, published December 30, 2024, 8.85 million hectares were planted, down 6 percent from the same period last year.

### India: Rapeseed Planting Progress

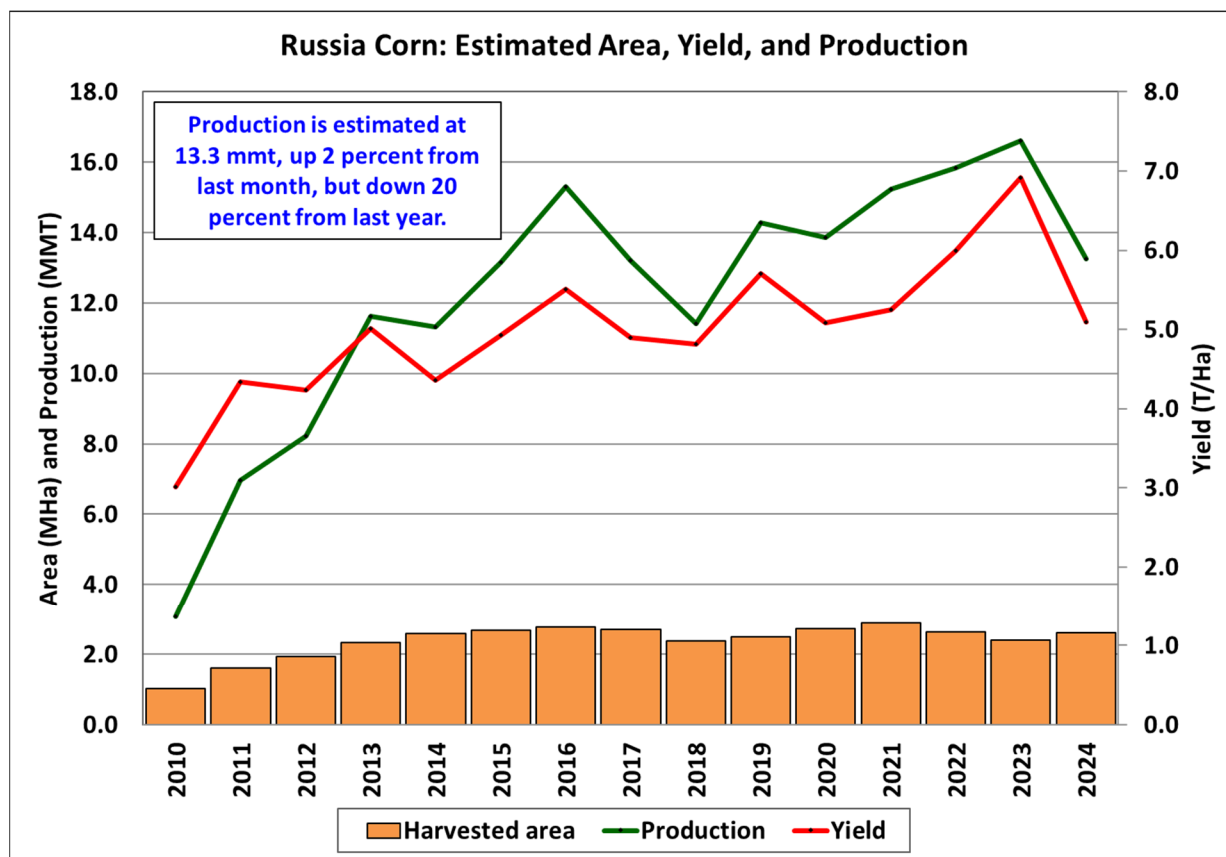


Source: Government of India, Press Information Bureau

Rapeseed is grown only in the *rabi* season. It is planted in late October until January and harvested in March. Currently, the rapeseed crop is at the vegetative stage. Flowering is expected between the end of February and early March. (For more information, please contact [Arnella.Trent@usda.gov](mailto:Arnella.Trent@usda.gov).)

## Russia Corn: Rosstat Releases its Preliminary 2024 Estimates

Russia corn production for marketing year 2024/25 is estimated at 13.3 million metric tons (mmt), up 2 percent from last month, but down 20 percent from last year and 13 percent from the 5-year average. Total corn yield is estimated at 5.10 tons per hectare (t/ha), down 2 percent from last month, 26 percent from last year, and 12 percent from the 5-year average. Total harvested area is estimated at 2.6 million hectares (mha), up 4 percent from last month and 8 percent from last year, but down 1 percent relative to the 5-year average.



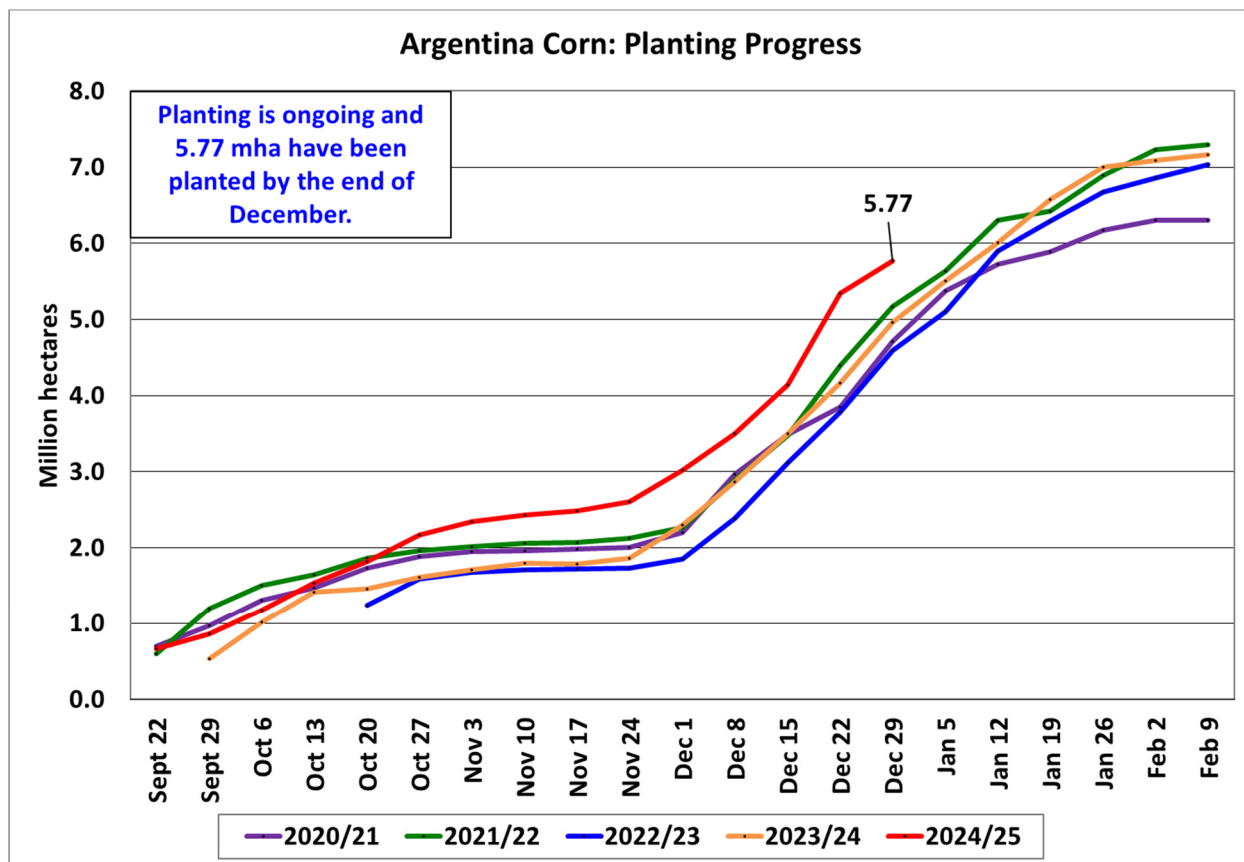
Source: USDA PSD Online

In late December, Russia's Statistical Agency (Rosstat) released its preliminary numbers for all major crops harvested in 2024. This season, Russia's main corn producing regions faced a lack of adequate precipitation and excessive heat throughout the entire growing season. As a result, crop vigor remained consistently below average resulting into lower-than-normal crop yield, which agrees with Rosstat's preliminary yield estimate for corn. As clarified in the report, the data do not reflect the Donetsk People's Republic, Lugansk People's Republic, Zaporozhye and Kherson regions. Rosstat's final 2024 numbers are expected to be released in early spring. *(For more information, please contact [Iliana.Mladenova@usda.gov](mailto:Iliana.Mladenova@usda.gov).)*



## Argentina Corn: Production Unchanged as Planting Nears End

Argentina corn production for marketing year 2024/25 is forecast at 51.0 million metric tons, unchanged from last month, and up 2 percent from last year. Corn yield is forecast at 7.97 tons per hectare (t/ha), unchanged from last month, and up 12 percent from last year's yield. Harvested area is forecast at 6.4 million hectares, unchanged from last month, and down 9 percent from last year.



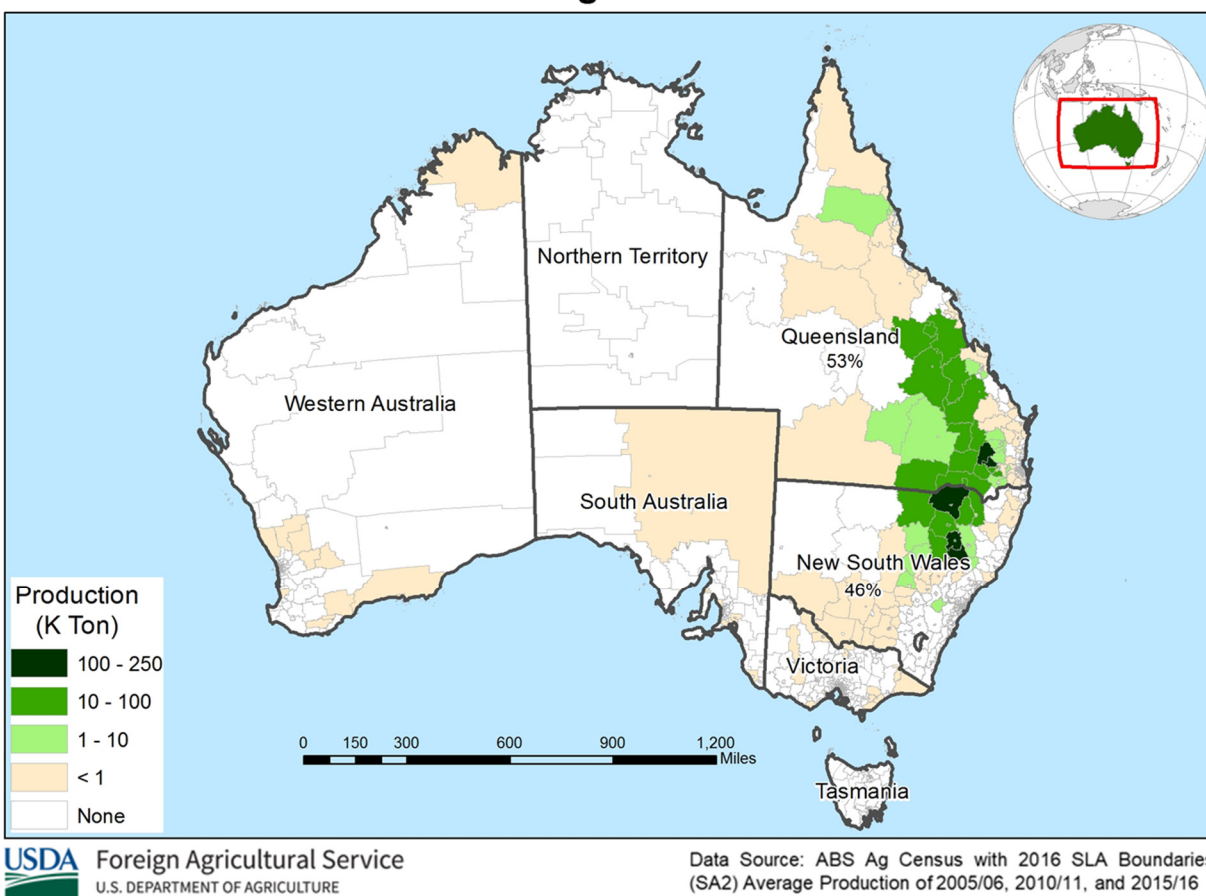
Source: Bolsa Cereales Buenos Aires

Bolsa Cereales Buenos Aires published an updated planted area forecast of 6.6 mha, up from 6.3 mha. Abandonment for corn is about 3 percent on average and USDA publishes harvested area. This summer crop season is unique as many farmers are altering normal crop rotations due to expected continued issues of the leafhopper insect, or *chicharrita*, which causes corn stunt disease. As of the end of December, corn planting is about 87 percent complete, and planting will continue through January. Argentina farmers planted more early-planted corn this year (corn planted prior to December 1<sup>st</sup>) than in previous years, because early-planted corn largely missed the *chicharrita* infestation last year. Late-planted corn area diminished significantly in the central and northern regions, which were the areas most impacted by the infestation last year. There was sufficient moisture during early corn planting and establishment, but conditions have dried out towards the end of December. Conditions are normally drier during the summer months, but additional moisture will benefit the crop. (For more information, please contact [Katie.McGaughey@usda.gov](mailto:Katie.McGaughey@usda.gov).)

## Australia Sorghum: Harvested Area and Production Down from Last Year

USDA forecasts Australia sorghum production for marketing year (MY) 2024/25 at 2.1 million metric tons (mmt), down 13 percent from last month and 5 percent from last year, but up 10 percent from the 5-year average. Harvested area is forecasted at 570,000 hectares, down 5 percent from last month and last year, yet 6 percent above the 5-year average. Yield is forecasted at 3.68 tons per hectare, down 8 percent from last month, slightly up from last year and 11 percent above the 5-year average.

### Australia: Sorghum Production



Sorghum is mainly planted in the eastern Australia states of Queensland and New South Wales. This region benefited from abundant November 2024 rains which boosted soil moisture levels and created favorable conditions for planting. However, as reported by the Australian Bureau of Agricultural and Resource Economics and Sciences (ABARES) in the December 2024 report, there was a decline in sorghum area due to the large winter crops which overlap with sorghum-growing regions, specifically barley, wheat and canola. Additionally, cotton is the other dominant summer crop along with sorghum that benefited from the favorable rainfall, and it is possible that some farmers chose to plant cotton over sorghum this year.

Sorghum can be planted from September through the end of January and the main harvest typically begins by early March and goes through June. *(For more information, please contact [Shannon.Moyo@usda.gov](mailto:Shannon.Moyo@usda.gov).)*





**World Agricultural Production  
U.S. Department of Agriculture**

Foreign Agricultural Service / Global Market Analysis  
International Production Assessment Division (IPAD)  
GMA/IPAD Room 5071, South Building  
1400 Independence Ave SW  
Washington, DC 20250-1051  
<https://ipad.fas.usda.gov/>

This report uses information from the Foreign Agricultural Service's (FAS) global network of agricultural attachés and counselors, official statistics of foreign governments and other foreign source materials, and the analysis of economic data and satellite imagery. Estimates of foreign area, yield, and production are from the International Production Assessment Division (IPAD), FAS, and are reviewed by USDA's Inter-Agency Commodity Estimates Committee. Estimates of U.S. area, yield, and production are from USDA's National Agricultural Statistics Service. Numbers within the report may not add to totals because of rounding. This report reflects official USDA estimates released in the World Agricultural Supply and Demand Estimates (WASDE-584), January 10, 2025.

The FAS International Production Assessment Division prepared this report. The next issue of World Agricultural Production will be released after 12:00 p.m. Eastern Time, February 11, 2025.

**Conversion Table**

Metric tons to bushels

Wheat, soybeans	=	MT * 36.7437
Corn, sorghum, rye	=	MT * 39.36825
Barley	=	MT * 45.929625
Oats	=	MT * 68.894438

Metric tons to 480-lb bales

Cotton	=	MT * 4.592917
--------	---	---------------

Metric tons to hundredweight

Rice	=	MT * 22.04622
------	---	---------------

Area & weight

1 hectare	=	2.471044 acres
1 kilogram	=	2.204622 pounds



For further information, contact:  
**U.S. Department of Agriculture**  
**Foreign Agricultural Service**  
**Global Market Analysis**

International Production Assessment Division  
 GMA/IPAD Room 5071, South Building  
 1400 Independence Ave SW  
 Washington, DC 20250-1051

**GENERAL INFORMATION**

Senior Director	Ronald Frantz	202-720-4056	ronald.frantz@usda.gov
Director	Robert Tetrault	202-720-1071	robert.tetrault@usda.gov
USDA Remote Sensing Advisor	Vacant		
Sr. Analyst/Technical Lead	Curt Reynolds, Ph.D.	202-690-0134	curt.reynolds@usda.gov
Sr. Analyst/ Satellite Imagery	Dath Mita, Ph.D.	202-720-7339	dath.mita@usda.gov
Archives Manager/Technical Lead			
Sr. Analyst/Technical Lead	Vacant		
GIS Mapping/Imagery Analyst	Lisa Colson	202-720-6652	lisa.colson@usda.gov
WAP Coordinators	Shannon Moyo	771-221-5973	shannon.moyo@usda.gov
	Vacant		

**ANALYSIS REGIONS**

**ANALYST**

**CONTACT INFORMATION**

Brazil	Aaron Mulhollen	202-690-0131	aaron.mulhollen@usda.gov
South America (except Brazil), and Central Asia	Katie McGaughey	202-720-9210	katie.mcgaughey@usda.gov
Europe, North Africa, and Middle East	Bryan Purcell	202-690-0138	bryan.purcell@usda.gov
India, Pakistan, and South Asia	Arnella Trent	202-720-0881	arnella.trent@usda.gov
China and East Asia	Dath Mita, Ph.D.	202-720-7339	dath.mita@usda.gov
South Africa and Sub-Saharan Africa	Curt Reynolds, Ph.D.	202-690-0134	curt.reynolds@usda.gov
Indonesia and Southeast Asia	Justin Jenkins	202-720-0419	justin.jenkins@usda.gov
Mexico and Central America	Lisa Colson	202-720-6652	lisa.colson@usda.gov
Canada, Caribbean, and Australia	Shannon Moyo	771-221-5973	shannon.moyo@usda.gov
Russia, Ukraine, Kazakhstan, Moldova, and Belarus	Iliana Mladenova, Ph.D.	202-690-2315	iliana.mladenova@usda.gov



The Foreign Agricultural Service (FAS) updates its production, supply and distribution (PSD) database for cotton, oilseeds, and grains at 12:00 p.m. on the day the *World Agricultural Supply and Demand Estimates* (WASDE) report is released. This circular is released by 12:15 p.m.

## FAS Reports and Databases:

### World Agricultural Production

Current: <https://www.fas.usda.gov/data/world-agricultural-production>

Archive: <https://usda.library.cornell.edu/concern/publications/5q47rn72z?locale=en>

USDA's Foreign Agricultural Service (FAS) publishes a monthly report on crop acreage, yield and production in major countries worldwide. Sources include reporting from FAS's worldwide offices, official statistics of foreign governments, and analysis of economic data and satellite imagery. The reports reflect official USDA estimates released in the monthly *World Agricultural Supply and Demand Estimates* (WASDE).

### World Markets and Trade

Current: <https://www.fas.usda.gov/data>

Archive:

[https://usda.library.cornell.edu/catalog?f%5Bmember\\_of\\_collections\\_ssim%5D%5B%5D=Foreign+Agricultural+Service&locale=en](https://usda.library.cornell.edu/catalog?f%5Bmember_of_collections_ssim%5D%5B%5D=Foreign+Agricultural+Service&locale=en)

USDA's Foreign Agricultural Service (FAS) publishes monthly and quarterly reports which include data on U.S. and global trade, production, consumption and stocks, as well as analysis of developments affecting world trade in oilseeds, grains, cotton, livestock and poultry. The reports reflect official USDA estimates released in the monthly *World Agricultural Supply and Demand Estimates* (WASDE).

### Global Agricultural Information Network (GAIN)

<https://gain.fas.usda.gov/>

USDA's Foreign Agricultural Service (FAS) provides timely reports on foreign markets through the Global Agriculture Information Network (GAIN) database. An average of 2,000 reports are added each year, with reports going back to 1995. GAIN reports are compiled by FAS' global market intelligence network, which includes FAS foreign service officers and locally engaged staff in over 90 overseas offices world-wide. They provide on-the-ground intelligence, insight, and analysis on nearly 200 countries, delivering information on foreign agricultural markets, crop conditions, and agro-political dynamics of interest to U.S. agriculture. GAIN reports contain assessments of commodity and trade issues made by USDA staff and are not necessarily statements of official U.S. government policy.

### Production, Supply and Distribution (PS&D) Online

<https://apps.fas.usda.gov/psdonline/app/index.html#/app/home>

PSD Online is the public repository for USDA's Official Production, Supply and Distribution forecast data and reports for key agricultural commodities. PSD Online data are reviewed and updated monthly by an interagency committee chaired by USDA's World Agricultural Outlook Board (WAOB). The committee consist of representatives from Foreign Agricultural Service (FAS), the Economic Research Service (ERS), the Farm Service Agency (FSA), and the Agricultural Marketing Service (AMS).

### EU Countries and Russia Wheat: Area and Production Estimates

<https://apps.fas.usda.gov/psdonline/app/index.html#/app/downloads> (click on PSD Datasets)

USDA's Foreign Agricultural Service (FAS) provides country-level area and production estimates for the nations of the European Union. For Russia, country-level area and production estimates are provided for Winter and Spring wheat. These datasets are reviewed and updated monthly by an interagency committee chaired by USDA's World Agricultural Outlook Board (WAOB) and can be downloaded through PSD datasets on PSD Online.



## FAS Reports and Databases:

### **International Production Assessment (IPAD)**

<https://ipad.fas.usda.gov/>

USDA's Foreign Agricultural Service (FAS) maintains a dynamic global crop production portal with key information including *World Agricultural Production* (WAP) briefs, Commodity Intelligence Reports (CIR), geospatial applications, crop production maps at a subnational level and crop calendars for the top-20 producing countries. Additionally, Crop Explorer (<https://ipad.fas.usda.gov/cropexplorer/>) displays rainfall, temperature, evapotranspiration, soil moisture, snow cover, and vegetation conditions in charts and maps.

### **USDA and NASA Global Agricultural Monitoring (GLAM)**

<https://glam1.gsfc.nasa.gov/>

The USDA and NASA Global Agricultural Monitoring (GLAM) system provides near real-time and science quality Moderate Resolution Imaging Spectroradiometer (MODIS) Normalized Difference Vegetation Index (NDVI) from the satellites Terra and Aqua. The public can view and retrieve MODIS 8-day composited, global NDVI satellite imagery and time series data. GLAM was developed by NASA's Global Inventory Modeling and Mapping Studies (GIMMS) group for USDA's Foreign Agricultural Service.

### **Global Agricultural and Disaster Assessment System (GADAS)**

<https://geo.fas.usda.gov/GADAS/index.html>

USDA's Foreign Agricultural Service (FAS) provides the Global Agricultural and Disaster Assessment System (GADAS), a web-based Geographic Information System (GIS) tool which integrates a vast array of highly detailed earth observation data streams, particularly targeted towards agricultural and disaster assessment analysis. GADAS is an interactive website which provides analysts with a wide variety of routine geospatial products (maps, charts, tables) they require for comprehensive situational investigations and recurring assessments.

### **Export Sales Reporting**

<https://apps.fas.usda.gov/esrquery/>

USDA's Export Sales Reporting Program monitors U.S. agricultural export sales on a daily and weekly basis. Export sales reporting provides a constant stream of up-to-date market information for 40 U.S. agricultural commodities sold abroad. The weekly U.S. Export Sales report is the most currently available source of U.S. exports sales data. The data is used to analyze overall levels of export demand, determine where markets exit, and assess the relative position of U.S. commodities in foreign markets.

### **Global Agricultural Trade System (GATS)**

<https://apps.fas.usda.gov/gats/default.aspx>

The Global Agricultural Trade System (GATS) is a searchable database containing monthly U.S. Census Bureau trade data organized by agricultural commodity and agricultural related product groups. Trade data is searchable by partner countries and partner groups. Historical U.S. agricultural trade data is available back to 1967. In addition, U.N. trade statistics (UN Comtrade) may be queried through GATS. UN trade data is available for nearly 200 countries or areas, dating from the inception of the Harmonized System (HS) of trade codes in 1989 to present. The database is continuously updated. U.S. trade data is updated monthly according to the U.S. Census Bureau's reporting system. UN Comtrade data are updated in GATS after nationally submitted data to the UN are standardized by the UN Statistical Division and added to the UN Comtrade database.

## **Other USDA Reports:**

World Agricultural Supply and Demand Estimates (WASDE):

<http://www.usda.gov/oce/commodity/wasde/>

Economic Research Service:

<http://www.ers.usda.gov/topics/crops>

National Agricultural Statistics Service:

<http://www.nass.usda.gov/Publications/>

**Table 01 World Crop Production Summary**

Million Metric Tons

Commodity	World -	Total Foreign	North America			Former Soviet		European	Asia (WAP)					South America		Selected Other			All Others
			United States	Canada -	Mexico -	Russia -	Ukraine -		China -	India -	Indonesia	Pakistan	Thailand	Argentina	Brazil -	Australia	South Africa	Turkey -	
---Million metric tons---																			
<b>Wheat</b>																			
2022/23	789.9	745.0	44.9	34.8	3.6	92.0	21.5	nr	137.7	104.0	0.0	26.2	0.0	12.6	10.6	40.5	2.1	17.3	242.1
2023/24 prel.	791.0	741.9	49.1	32.9	3.5	91.5	23.0	nr	136.6	110.6	0.0	28.2	0.0	15.9	8.1	26.0	2.1	21.0	242.7
2024/25 proj.																			
Dec	792.9	739.3	53.7	35.0	2.6	81.5	22.9	nr	140.0	113.3	0.0	31.4	0.0	17.5	8.1	32.0	2.0	19.0	234.0
Jan	793.2	739.6	53.7	35.0	2.6	81.5	22.9	nr	140.1	113.3	0.0	31.6	0.0	17.5	8.1	32.0	2.0	19.0	234.1
<b>Coarse Grains</b>																			
2022/23	1,455.5	1,099.0	356.4	30.5	33.9	44.1	33.9	nr	285.9	56.8	12.4	11.3	5.4	43.9	143.5	18.8	17.5	14.8	346.2
2023/24 prel.	1,506.5	1,103.6	402.9	27.5	28.8	42.5	39.8	nr	297.4	57.2	12.7	10.2	5.4	58.4	127.8	14.4	13.9	17.0	350.5
2024/25 proj.																			
Dec	1,499.1	1,101.8	397.3	27.5	29.1	34.5	33.2	nr	300.6	57.6	12.8	9.8	5.5	60.3	133.5	15.8	17.6	14.7	349.5
Jan	1,494.3	1,103.4	390.9	27.5	29.1	34.0	33.2	nr	303.5	57.6	12.8	9.8	5.5	60.3	133.5	15.5	17.6	14.7	349.0
<b>Rice, Milled</b>																			
2022/23	516.7	511.6	5.1	0.0	0.1	0.6	0.0	nr	145.9	135.8	33.9	7.3	20.9	0.8	6.8	0.4	0.0	0.6	158.5
2023/24 prel.	522.6	515.7	6.9	0.0	0.2	0.7	0.0	nr	144.6	137.8	33.0	9.9	20.0	0.8	7.2	0.4	0.0	0.5	160.5
2024/25 proj.																			
Dec	533.7	526.7	7.0	0.0	0.2	0.8	0.0	nr	146.0	145.0	34.0	10.0	20.1	1.0	8.0	0.3	0.0	0.6	160.8
Jan	532.9	525.8	7.1	0.0	0.2	0.8	0.0	nr	145.3	145.0	34.0	10.0	20.1	1.0	8.0	0.3	0.0	0.6	160.6
<b>Total Grains</b>																			
2022/23	2,762.1	2,355.7	406.4	65.3	37.6	136.7	55.4	nr	569.6	296.5	46.3	44.9	26.3	57.2	160.9	59.8	19.6	32.7	746.8
2023/24 prel.	2,820.1	2,361.2	458.9	60.5	32.4	134.7	62.8	nr	578.6	305.5	45.7	48.3	25.4	75.0	143.1	40.9	16.0	38.6	753.8
2024/25 proj.																			
Dec	2,825.8	2,367.8	457.9	62.5	31.8	116.8	56.1	nr	586.6	315.9	46.8	51.2	25.6	78.7	149.6	48.1	19.6	34.2	744.4
Jan	2,820.4	2,368.8	451.6	62.5	31.8	116.3	56.1	nr	588.8	315.9	46.8	51.4	25.6	78.7	149.6	47.8	19.6	34.2	743.7
<b>Oilseeds</b>																			
2022/23	638.2	512.4	125.8	25.5	0.9	26.6	19.8	nr	68.7	42.3	14.7	2.7	1.0	31.5	166.9	9.8	3.8	4.0	94.3
2023/24 prel.	657.0	534.9	122.2	26.3	0.6	28.1	25.5	nr	68.6	41.4	13.9	3.8	1.1	54.2	158.8	7.3	2.8	3.1	99.4
2024/25 proj.																			
Dec	683.4	552.2	131.2	26.4	0.6	28.6	23.3	nr	68.3	43.5	15.0	3.1	1.1	58.2	175.8	7.0	3.9	3.2	94.3
Jan	680.4	551.9	128.5	26.4	0.6	28.3	23.3	nr	69.0	43.0	15.0	2.9	1.1	58.2	175.8	7.1	3.9	3.2	94.2
<b>Cotton</b>																			
2022/23	116.3	101.8	14.5	0.0	1.6	0.0	0.0	1.6	30.8	26.3	0.0	3.9	0.0	1.2	11.7	5.8	0.1	4.9	14.0
2023/24 prel.	113.0	100.9	12.1	0.0	0.9	0.0	0.0	1.0	27.4	25.4	0.0	7.0	0.0	1.7	14.6	5.0	0.1	3.2	14.8
2024/25 proj.																			
Dec	117.4	103.1	14.3	0.0	0.8	0.0	0.0	1.3	28.2	25.0	0.0	5.5	0.0	1.8	16.9	5.0	0.1	4.0	14.6
Jan	119.4	105.0	14.4	0.0	0.8	0.0	0.0	1.3	30.0	25.0	0.0	5.2	0.0	1.8	16.9	5.4	0.1	4.0	14.6

1/ Includes wheat, coarse grains, and rice (milled) shown above.

**Table 02 Wheat Area, Yield, and Production**

Country / Region	Area (Million hectares)				Yield (Metric tons per hectare)				Production (Million metric tons)				Change in Production						
	2022/23	Prel.		2024/25 Proj.		2022/23	Prel.		2024/25 Proj.		2022/23	Prel.		2024/25 Proj.		From last month		From last year	
		2023/24	Dec	Jan	2023/24		Dec	Jan	2023/24	Dec		Jan	MMT	Percent	MMT	Percent			
<b>World</b>	219.64	222.93	222.18	222.24	3.60	3.55	3.57	3.57	789.89	791.02	792.95	793.24	0.29	0.04	2.22	0.28			
<b>United States</b>	14.36	15.01	15.57	15.57	3.13	3.27	3.45	3.45	44.90	49.10	53.65	53.65	0.00	0.00	4.56	9.28			
<b>Total Foreign</b>	205.28	207.93	206.62	206.67	3.63	3.57	3.58	3.58	744.99	741.93	739.30	739.59	0.29	0.04	-2.34	-0.32			
<b>European Union</b>	24.44	24.34	22.83	22.83	5.50	5.55	5.31	5.31	134.49	135.10	121.30	121.30	0.00	0.00	-13.80	-10.21			
<b>United Kingdom</b>	1.81	1.72	1.40	1.40	8.57	8.13	7.89	7.89	15.54	13.98	11.05	11.05	0.00	0.00	-2.93	-20.96			
<b>Serbia</b>	0.62	0.73	0.63	0.63	5.32	4.69	4.80	4.80	3.30	3.40	3.00	3.00	0.00	0.00	-0.40	-11.76			
<b>China</b>	23.52	23.63	23.70	23.59	5.86	5.78	5.91	5.94	137.72	136.59	140.00	140.10	0.10	0.07	3.51	2.57			
<b>South Asia</b>																			
India	30.46	31.40	31.83	31.83	3.41	3.52	3.56	3.56	104.00	110.55	113.29	113.29	0.00	0.00	2.74	2.48			
Pakistan	8.98	9.03	9.63	9.73	2.92	3.12	3.26	3.24	26.21	28.16	31.40	31.58	0.18	0.58	3.42	12.15			
Afghanistan	1.86	2.35	2.30	2.30	2.05	2.20	2.26	2.26	3.80	5.17	5.20	5.20	0.00	0.00	0.03	0.58			
Nepal	0.72	0.72	0.72	0.72	2.98	2.90	2.92	2.92	2.15	2.09	2.10	2.10	0.00	0.00	0.01	0.48			
<b>Former Soviet Union - 12</b>																			
Russia	29.00	28.83	28.00	28.00	3.17	3.17	2.91	2.91	92.00	91.50	81.50	81.50	0.00	0.00	-10.00	-10.93			
Russia Winter	16.30	15.27	15.80	15.80	4.17	4.19	3.64	3.64	68.00	64.00	57.50	57.50	0.00	0.00	-6.50	-10.16			
Russia Spring	12.70	13.56	12.20	12.20	1.89	2.03	1.97	1.97	24.00	27.50	24.00	24.00	0.00	0.00	-3.50	-12.73			
Ukraine	5.60	5.01	5.20	5.20	3.84	4.59	4.40	4.40	21.50	23.00	22.90	22.90	0.00	0.00	-0.10	-0.43			
Kazakhstan	12.81	13.13	13.00	13.00	1.28	0.92	1.38	1.38	16.40	12.11	18.00	18.00	0.00	0.00	5.89	48.63			
Uzbekistan	1.26	1.40	1.30	1.30	4.99	4.62	5.15	5.15	6.27	6.46	6.70	6.70	0.00	0.00	0.24	3.68			
Belarus	0.68	0.68	0.69	0.69	3.48	3.38	3.80	3.80	2.35	2.30	2.60	2.60	0.00	0.00	0.30	13.04			
<b>Canada</b>	10.10	10.70	10.65	10.65	3.45	3.08	3.28	3.28	34.81	32.95	34.96	34.96	0.00	0.00	2.01	6.11			
<b>South America</b>																			
Argentina	5.50	5.58	6.00	6.00	2.28	2.84	2.92	2.92	12.55	15.85	17.50	17.50	0.00	0.00	1.65	10.41			
Brazil	3.09	3.47	3.00	3.00	3.42	2.33	2.70	2.70	10.55	8.10	8.10	8.10	0.00	0.00	0.00	0.04			
<b>Australia</b>	13.05	12.37	13.00	13.00	3.11	2.10	2.46	2.46	40.55	25.96	32.00	32.00	0.00	0.00	6.04	23.27			
<b>Africa</b>																			
Egypt	1.45	1.35	1.40	1.40	6.55	6.57	6.57	6.57	9.50	8.87	9.20	9.20	0.00	0.00	0.33	3.72			
Morocco	2.44	2.43	2.20	2.20	1.11	1.71	1.12	1.12	2.71	4.16	2.47	2.46	-0.01	-0.40	-1.70	-40.84			
Algeria	1.80	1.80	1.80	1.80	2.00	1.50	1.67	1.67	3.60	2.70	3.00	3.00	0.00	0.00	0.30	11.11			
Ethiopia	1.90	1.90	1.90	1.90	3.05	3.05	3.16	3.16	5.80	5.80	6.00	6.00	0.00	0.00	0.20	3.45			
<b>Middle East</b>																			
Turkey	6.80	7.20	7.25	7.25	2.54	2.92	2.62	2.62	17.25	21.00	19.00	19.00	0.00	0.00	-2.00	-9.52			
Iran	6.20	6.20	6.20	6.20	2.13	2.26	2.34	2.34	13.20	14.00	14.50	14.50	0.00	0.00	0.50	3.57			
Iraq	2.10	2.60	2.70	2.70	1.52	2.00	2.22	2.22	3.20	5.20	6.00	6.00	0.00	0.00	0.80	15.38			
Syria	1.18	1.50	1.30	1.40	1.31	2.03	2.15	2.14	1.55	3.03	2.80	3.00	0.20	7.14	-0.03	-1.09			
<b>Mexico</b>	0.60	0.56	0.46	0.46	6.06	6.21	5.65	5.65	3.61	3.48	2.60	2.60	0.00	0.00	-0.88	-25.20			
<b>Others</b>	7.34	7.30	7.53	7.49	2.78	2.80	2.94	2.93	20.38	20.42	22.13	21.95	-0.18	-0.82	1.52	7.46			



**Table 03 Total Coarse Grain Area, Yield, and Production**

Country / Region	Area (Million hectares)				Yield (Metric tons per hectare)				Production (Million metric tons)				Change in Production			
	Prel.		2024/25 Proj.		Prel.		2024/25 Proj.		Prel.		2024/25 Proj.		From last month		From last year	
	2022/23	2023/24	Dec	Jan	2022/23	2023/24	Dec	Jan	2022/23	2023/24	Dec	Jan	MMT	Percent	MMT	Percent
<b>World</b>	337.85	338.83	335.51	335.56	4.31	4.45	4.47	4.45	1,455.49	1,506.45	1,499.13	1,494.29	-4.84	-0.32	-12.16	-0.81
<b>United States</b>	35.18	38.99	36.89	37.10	10.13	10.33	10.77	10.54	356.45	402.88	397.28	390.86	-6.42	-1.62	-12.03	-2.98
<b>Total Foreign</b>	302.67	299.83	298.62	298.46	3.63	3.68	3.69	3.70	1,099.04	1,103.57	1,101.85	1,103.44	1.59	0.14	-0.13	-0.01
<b>China</b>	45.58	46.71	47.20	47.24	6.27	6.37	6.37	6.42	285.89	297.38	300.55	303.47	2.92	0.97	6.09	2.05
<b>European Union</b>	26.59	26.09	26.20	26.26	5.01	5.25	5.21	5.18	133.10	136.88	136.41	136.11	-0.31	-0.22	-0.78	-0.57
<b>United Kingdom</b>	1.37	1.38	1.47	1.47	6.33	5.87	5.72	5.72	8.67	8.08	8.43	8.43	0.00	0.00	0.35	4.30
<b>South America</b>																
Brazil	24.45	23.62	24.51	24.51	5.87	5.41	5.45	5.45	143.49	127.81	133.52	133.52	0.00	0.00	5.72	4.47
Argentina	9.66	9.32	8.91	8.91	4.55	6.26	6.77	6.77	43.91	58.37	60.29	60.29	0.00	0.00	1.92	3.29
<b>Former Soviet Union - 12</b>																
Russia	13.60	12.88	11.85	11.63	3.25	3.30	2.91	2.92	44.13	42.54	34.50	33.97	-0.53	-1.54	-8.57	-20.15
Ukraine	6.32	6.24	6.05	6.05	5.37	6.38	5.49	5.49	33.93	39.78	33.24	33.24	0.00	0.00	-6.54	-16.45
Kazakhstan	2.63	2.87	2.65	2.65	1.79	1.40	1.83	1.83	4.71	4.01	4.84	4.84	0.00	0.00	0.83	20.77
Belarus	1.03	1.05	1.18	1.18	3.11	3.09	3.39	3.39	3.20	3.23	3.98	3.98	0.00	0.00	0.75	23.22
<b>Africa</b>																
Nigeria	13.50	13.40	13.50	13.50	1.61	1.42	1.45	1.45	21.70	19.01	19.60	19.60	0.00	0.00	0.59	3.09
South Africa	3.13	3.20	3.34	3.34	5.61	4.35	5.26	5.26	17.53	13.91	17.56	17.56	0.00	0.00	3.65	26.22
Tanzania	5.30	5.50	5.60	5.60	1.36	1.51	1.67	1.67	7.23	8.33	9.33	9.33	0.00	0.00	1.00	12.01
Burkina Faso	4.09	4.20	4.20	4.20	1.16	1.12	1.13	1.13	4.73	4.72	4.75	4.75	0.00	0.00	0.04	0.74
Ethiopia	5.45	5.41	5.64	5.64	3.21	3.25	3.18	3.18	17.47	17.56	17.91	17.91	0.00	0.00	0.35	1.99
Egypt	1.10	1.12	1.09	1.09	7.52	7.19	7.22	7.22	8.28	8.07	7.88	7.88	0.00	0.00	-0.19	-2.35
Mali	5.20	4.80	4.90	4.90	1.38	1.43	1.43	1.43	7.15	6.86	7.00	7.00	0.00	0.00	0.14	2.07
<b>India</b>	23.90	25.02	24.85	24.85	2.38	2.28	2.32	2.32	56.78	57.16	57.60	57.60	0.00	0.00	0.44	0.78
<b>Southeast Asia</b>																
Indonesia	3.50	3.70	3.60	3.60	3.54	3.43	3.56	3.56	12.40	12.70	12.80	12.80	0.00	0.00	0.10	0.79
Philippines	2.54	2.49	2.55	2.55	3.28	3.25	3.25	3.25	8.32	8.10	8.30	8.30	0.00	0.00	0.20	2.47
Vietnam	0.89	0.87	0.85	0.85	4.99	5.00	5.06	5.06	4.42	4.35	4.30	4.30	0.00	0.00	-0.05	-1.15
Thailand	1.21	1.25	1.26	1.26	4.47	4.29	4.34	4.34	5.40	5.35	5.45	5.45	0.00	0.00	0.10	1.87
<b>Mexico</b>	8.64	7.70	7.75	7.75	3.92	3.74	3.75	3.75	33.88	28.82	29.06	29.06	0.00	0.00	0.24	0.83
<b>Canada</b>	5.74	5.24	5.05	5.05	5.32	5.25	5.45	5.45	30.54	27.52	27.52	27.52	0.00	0.00	0.00	-0.01
<b>Australia</b>	5.69	5.63	5.90	5.87	3.31	2.56	2.67	2.64	18.84	14.44	15.77	15.47	-0.30	-1.90	1.03	7.10
<b>Middle East</b>																
Turkey	4.57	4.59	4.55	4.55	3.25	3.72	3.22	3.22	14.84	17.05	14.66	14.66	0.00	0.00	-2.39	-13.99
Iran	1.86	1.86	1.81	1.81	2.38	2.38	2.50	2.50	4.42	4.42	4.52	4.52	0.00	0.00	0.10	2.26
<b>Others</b>	75.17	73.71	72.18	72.18	1.65	1.72	1.69	1.69	124.09	127.13	122.09	121.90	-0.19	-0.16	-5.24	-4.12

World and Selected Countries and Regions; Coarse Grain includes: Barley, Corn, Millet, Mixed Grains, Oats, Rye and Sorghum

**Table 04 Corn Area, Yield, and Production**

Country / Region	Area (Million hectares)				Yield (Metric tons per hectare)				Production (Million metric tons)				Change in Production						
	2022/23	Prel.		2024/25 Proj.		2022/23	Prel.		2024/25 Proj.		2022/23	Prel.		2024/25 Proj.		From last month		From last year	
		2023/24	Dec	Jan	2023/24		Dec	Jan	2023/24	Dec		Jan	MMT	Percent	MMT	Percent			
<b>World</b>	202.18	205.26	202.72	202.89	5.75	5.99	6.01	5.99	1,163.38	1,230.01	1,217.89	1,214.35	-3.54	-0.29	-15.66	-1.27			
<b>United States</b>	31.85	35.01	33.47	33.55	10.89	11.13	11.49	11.26	346.74	389.67	384.64	377.63	-7.01	-1.82	-12.03	-3.09			
<b>Total Foreign</b>	170.33	170.25	169.25	169.34	4.79	4.94	4.92	4.94	816.64	840.34	833.25	836.71	3.47	0.42	-3.63	-0.43			
<b>China</b>	43.07	44.22	44.70	44.74	6.44	6.53	6.53	6.59	277.20	288.84	292.00	294.92	2.92	1.00	6.08	2.10			
<b>South America</b>																			
Brazil	22.40	21.50	22.30	22.30	6.12	5.67	5.70	5.70	137.00	122.00	127.00	127.00	0.00	0.00	5.00	4.10			
Argentina	7.20	7.00	6.40	6.40	5.14	7.14	7.97	7.97	37.00	50.00	51.00	51.00	0.00	0.00	1.00	2.00			
Bolivia	0.47	0.44	0.43	0.43	2.67	2.49	2.56	2.56	1.26	1.09	1.10	1.10	0.00	0.00	0.02	1.38			
<b>European Union</b>	8.85	8.32	8.60	8.60	5.92	7.43	6.74	6.74	52.38	61.87	58.00	58.00	0.00	0.00	-3.87	-6.25			
<b>Africa</b>																			
South Africa	2.95	3.00	3.15	3.15	5.81	4.47	5.40	5.40	17.10	13.40	17.00	17.00	0.00	0.00	3.60	26.87			
Nigeria	5.80	5.70	5.50	5.50	2.23	1.94	2.00	2.00	12.95	11.05	11.00	11.00	0.00	0.00	-0.05	-0.48			
Ethiopia	2.55	2.50	2.55	2.55	4.00	4.00	4.00	4.00	10.20	10.00	10.20	10.20	0.00	0.00	0.20	2.00			
Egypt	0.93	0.95	0.92	0.92	8.00	7.58	7.61	7.61	7.44	7.20	7.00	7.00	0.00	0.00	-0.20	-2.78			
Tanzania	4.00	4.20	4.30	4.30	1.48	1.67	1.86	1.86	5.90	7.00	8.00	8.00	0.00	0.00	1.00	14.29			
Malawi	1.75	1.79	1.50	1.50	2.12	1.96	1.93	1.93	3.72	3.51	2.90	2.90	0.00	0.00	-0.61	-17.38			
Zambia	1.12	1.42	0.69	0.69	2.43	2.30	2.20	2.20	2.71	3.26	1.51	1.51	0.00	0.00	-1.75	-53.72			
Kenya	2.16	2.20	2.15	2.15	1.43	1.95	1.86	1.86	3.09	4.28	4.00	4.00	0.00	0.00	-0.28	-6.63			
Uganda	2.15	2.27	2.30	2.30	2.20	2.18	2.17	2.17	4.74	4.95	5.00	5.00	0.00	0.00	0.06	1.11			
Zimbabwe	1.00	1.00	0.90	0.90	1.45	1.50	0.71	0.71	1.45	1.50	0.64	0.64	0.00	0.00	-0.87	-57.67			
<b>Former Soviet Union - 12</b>																			
Ukraine	4.05	4.20	4.10	4.10	6.67	7.74	6.46	6.46	27.00	32.50	26.50	26.50	0.00	0.00	-6.00	-18.46			
Russia	2.64	2.40	2.50	2.60	6.00	6.92	5.20	5.10	15.83	16.60	13.00	13.25	0.25	1.92	-3.35	-20.18			
<b>South Asia</b>																			
India	10.74	11.24	10.80	10.80	3.54	3.35	3.52	3.52	38.09	37.67	38.00	38.00	0.00	0.00	0.34	0.89			
Pakistan	1.72	1.64	1.50	1.50	6.39	6.00	6.33	6.33	10.99	9.85	9.50	9.50	0.00	0.00	-0.35	-3.52			
Nepal	0.97	0.97	0.97	0.97	2.82	2.82	2.82	2.82	2.72	2.72	2.72	2.72	0.00	0.00	0.00	0.00			
<b>Southeast Asia</b>																			
Indonesia	3.50	3.70	3.60	3.60	3.54	3.43	3.56	3.56	12.40	12.70	12.80	12.80	0.00	0.00	0.10	0.79			
Philippines	2.54	2.49	2.55	2.55	3.28	3.25	3.25	3.25	8.32	8.10	8.30	8.30	0.00	0.00	0.20	2.47			
Vietnam	0.89	0.87	0.85	0.85	4.99	5.00	5.06	5.06	4.42	4.35	4.30	4.30	0.00	0.00	-0.05	-1.15			
Thailand	1.18	1.22	1.23	1.23	4.53	4.34	4.39	4.39	5.35	5.30	5.40	5.40	0.00	0.00	0.10	1.89			
<b>Mexico</b>	6.89	6.10	6.10	6.10	4.07	3.85	3.89	3.89	28.08	23.50	23.70	23.70	0.00	0.00	0.20	0.85			
<b>Canada</b>	1.44	1.52	1.45	1.45	10.07	10.15	10.59	10.59	14.54	15.42	15.35	15.35	0.00	0.00	-0.08	-0.49			
<b>Turkey</b>	0.53	0.65	0.56	0.56	12.83	12.92	12.50	12.50	6.80	8.40	7.00	7.00	0.00	0.00	-1.40	-16.67			
<b>Others</b>	26.85	26.75	26.66	26.61	2.53	2.74	2.64	2.65	67.98	73.29	70.34	70.64	0.30	0.43	-2.65	-3.62			

World and Selected Countries and Regions

**Table 05 Barley Area, Yield, and Production**

Country / Region	Area (Million hectares)				Yield (Metric tons per hectare)				Production (Million metric tons)				Change in Production			
	Prel.		2024/25 Proj.		Prel.		2024/25 Proj.		Prel.		2024/25 Proj.		From last month		From last year	
	2022/23	2023/24	Dec	Jan	2022/23	2023/24	Dec	Jan	2022/23	2023/24	Dec	Jan	MMT	Percent	MMT	Percent
<b>World</b>	47.13	47.08	45.79	45.73	3.20	3.05	3.10	3.11	150.97	143.37	142.08	142.03	-0.05	-0.03	-1.34	-0.94
<b>United States</b>	0.98	1.04	0.76	0.76	3.86	3.89	4.13	4.13	3.79	4.05	3.13	3.13	0.00	0.00	-0.92	-22.70
<b>Total Foreign</b>	46.15	46.04	45.03	44.98	3.19	3.03	3.09	3.09	147.19	139.32	138.95	138.90	-0.05	-0.03	-0.42	-0.30
<b>European Union</b>	10.32	10.37	10.32	10.32	5.02	4.61	4.88	4.88	51.83	47.81	50.40	50.40	0.00	0.00	2.59	5.41
<b>United Kingdom</b>	1.12	1.14	1.20	1.20	6.62	6.12	6.00	6.00	7.39	6.96	7.20	7.20	0.00	0.00	0.24	3.40
<b>Former Soviet Union - 12</b>																
Russia	7.75	7.65	6.70	6.60	2.77	2.68	2.46	2.46	21.50	20.50	16.50	16.25	-0.25	-1.52	-4.25	-20.73
Ukraine	1.95	1.68	1.60	1.60	3.13	3.78	3.69	3.69	6.10	6.35	5.90	5.90	0.00	0.00	-0.45	-7.09
Kazakhstan	2.18	2.43	2.25	2.25	1.51	1.08	1.60	1.60	3.29	2.61	3.60	3.60	0.00	0.00	0.99	37.72
Belarus	0.40	0.40	0.40	0.40	2.75	2.75	3.00	3.00	1.10	1.10	1.20	1.20	0.00	0.00	0.10	9.09
Azerbaijan	0.39	0.36	0.36	0.36	2.85	2.99	3.06	3.06	1.10	1.07	1.10	1.10	0.00	0.00	0.03	3.09
<b>Canada</b>	2.64	2.70	2.39	2.39	3.79	3.29	3.40	3.40	9.99	8.91	8.14	8.14	0.00	0.00	-0.76	-8.55
<b>Australia</b>	4.13	4.20	4.44	4.44	3.43	2.57	2.64	2.64	14.14	10.80	11.70	11.70	0.00	0.00	0.90	8.33
<b>Middle East</b>																
Turkey	3.80	3.70	3.75	3.75	1.95	2.16	1.87	1.87	7.40	8.00	7.00	7.00	0.00	0.00	-1.00	-12.50
Iran	1.65	1.65	1.60	1.60	1.82	1.82	1.94	1.94	3.00	3.00	3.10	3.10	0.00	0.00	0.10	3.33
Iraq	0.21	0.16	1.00	1.00	1.12	1.29	1.40	1.40	0.24	0.20	1.40	1.40	0.00	0.00	1.20	600.00
Syria	1.12	1.43	1.10	1.10	0.16	0.88	1.09	1.09	0.18	1.26	1.20	1.20	0.00	0.00	-0.06	-4.38
<b>Africa</b>																
Ethiopia	0.98	0.98	0.98	0.98	2.22	2.50	2.54	2.54	2.18	2.45	2.49	2.49	0.00	0.00	0.04	1.43
Morocco	1.14	1.17	0.80	0.80	0.61	1.15	0.83	0.83	0.70	1.35	0.66	0.66	0.00	0.00	-0.69	-51.11
Algeria	1.03	1.03	1.03	1.03	1.37	1.00	1.17	1.17	1.40	1.03	1.20	1.20	0.00	0.00	0.18	17.07
Tunisia	0.30	0.11	0.35	0.35	1.74	0.83	1.57	1.57	0.52	0.09	0.55	0.55	0.00	0.00	0.46	511.11
South Africa	0.10	0.11	0.10	0.10	2.99	3.49	3.70	3.75	0.30	0.38	0.37	0.38	0.01	1.35	0.00	-0.53
<b>South America</b>																
Argentina	1.59	1.30	1.25	1.25	2.95	3.92	3.92	3.92	4.70	5.10	4.90	4.90	0.00	0.00	-0.20	-3.92
Uruguay	0.21	0.19	0.19	0.23	4.25	4.87	4.34	4.35	0.90	0.92	0.83	1.00	0.18	21.21	0.09	9.29
Brazil	0.13	0.14	0.12	0.12	3.89	2.90	3.83	3.83	0.50	0.39	0.46	0.46	0.00	0.00	0.07	17.65
<b>India</b>	0.45	0.63	0.55	0.55	3.03	3.05	3.08	3.08	1.37	1.91	1.70	1.70	0.00	0.00	-0.21	-11.19
<b>China</b>	0.56	0.50	0.50	0.50	3.91	4.00	4.00	4.00	2.19	2.00	2.00	2.00	0.00	0.00	0.00	0.00
<b>Mexico</b>	0.30	0.29	0.29	0.29	2.69	2.69	2.69	2.69	0.80	0.78	0.78	0.78	0.00	0.00	0.00	0.00
<b>Afghanistan</b>	0.06	0.08	0.07	0.07	1.53	1.38	1.43	1.43	0.10	0.11	0.10	0.10	0.00	0.00	-0.01	-9.09
<b>Others</b>	1.67	1.67	1.69	1.70	2.58	2.55	2.64	2.65	4.30	4.25	4.47	4.50	0.02	0.51	0.24	5.67

World and Selected Countries and Regions

**Table 06 Oats Area, Yield, and Production**

Country / Region	Area (Million hectares)				Yield (Metric tons per hectare)				Production (Million metric tons)				Change in Production			
	2022/23	Prel.	2024/25 Proj.		2022/23	Prel.	2024/25 Proj.		2022/23	Prel.	2024/25 Proj.		From last month		From last year	
		2023/24	Dec	Jan		2023/24	Dec	Jan		2023/24	Dec	Jan	MMT	Percent	MMT	Percent
<b>World</b>	9.39	8.42	8.72	8.71	2.72	2.31	2.58	2.56	25.52	19.46	22.54	22.32	-0.22	-0.99	2.85	14.66
<b>United States</b>	0.36	0.34	0.36	0.36	2.35	2.46	2.74	2.74	0.84	0.83	0.98	0.98	0.00	0.00	0.16	18.84
<b>Total Foreign</b>	9.03	8.08	8.36	8.35	2.73	2.31	2.58	2.55	24.68	18.63	21.55	21.33	-0.22	-1.03	2.70	14.48
<b>European Union</b>	2.35	2.30	2.40	2.49	3.19	2.60	3.17	3.07	7.49	5.97	7.60	7.63	0.03	0.33	1.65	27.70
<b>Former Soviet Union - 12</b>																
Russia	2.13	1.77	1.70	1.60	2.11	1.86	1.91	1.88	4.50	3.30	3.25	3.00	-0.25	-7.69	-0.30	-9.09
Ukraine	0.15	0.17	0.17	0.17	2.47	2.53	2.35	2.35	0.38	0.43	0.40	0.40	0.00	0.00	-0.03	-6.98
Belarus	0.16	0.16	0.16	0.16	2.42	2.26	2.06	2.06	0.38	0.35	0.32	0.32	0.00	0.00	-0.03	-8.57
Kazakhstan	0.20	0.19	0.19	0.19	1.16	0.79	1.58	1.58	0.23	0.15	0.30	0.30	0.00	0.00	0.15	100.00
<b>Canada</b>	1.40	0.83	0.99	0.99	3.73	3.20	3.38	3.38	5.23	2.64	3.36	3.36	0.00	0.00	0.72	27.05
<b>South America</b>																
Argentina	0.26	0.28	0.30	0.30	1.67	2.03	2.00	2.00	0.43	0.57	0.60	0.60	0.00	0.00	0.04	6.19
Brazil	0.50	0.52	0.49	0.49	2.39	1.89	2.16	2.16	1.19	0.98	1.06	1.06	0.00	0.00	0.08	7.72
Chile	0.07	0.09	0.10	0.10	4.63	5.39	4.75	4.75	0.33	0.46	0.48	0.48	0.00	0.00	0.02	3.71
Uruguay	0.02	0.02	0.02	0.02	2.40	2.44	2.00	2.00	0.04	0.04	0.03	0.04	0.01	33.33	0.00	2.56
<b>Oceania</b>																
Australia	0.75	0.70	0.73	0.73	2.13	1.43	1.66	1.66	1.59	1.00	1.20	1.20	0.00	0.00	0.20	20.00
New Zealand	0.01	0.00	0.00	0.00	6.60	7.50	6.25	5.75	0.03	0.03	0.03	0.02	0.00	-8.00	-0.01	-23.33
<b>China</b>	0.43	0.46	0.47	0.47	1.84	1.83	1.83	1.83	0.79	0.84	0.85	0.85	0.00	0.00	0.01	1.19
<b>Africa</b>																
Algeria	0.08	0.08	0.08	0.08	1.31	1.31	1.31	1.31	0.11	0.11	0.11	0.11	0.00	0.00	0.00	0.00
Morocco	0.01	0.02	0.02	0.02	0.31	0.40	0.40	0.40	0.00	0.01	0.01	0.01	0.00	0.00	0.00	0.00
South Africa	0.03	0.03	0.03	0.03	1.04	1.46	1.83	1.67	0.03	0.04	0.06	0.05	-0.01	-9.09	0.01	21.95
<b>Other Europe</b>																
United Kingdom	0.18	0.17	0.20	0.20	5.72	4.97	5.00	5.00	1.01	0.83	1.00	1.00	0.00	0.00	0.17	20.48
Norway	0.06	0.07	0.07	0.07	4.62	4.29	4.29	4.29	0.29	0.30	0.30	0.30	0.00	0.00	0.00	0.00
Serbia	0.02	0.02	0.02	0.02	2.80	3.00	3.00	3.00	0.04	0.06	0.06	0.06	0.00	0.00	0.00	0.00
Albania	0.02	0.02	0.02	0.02	2.27	2.27	2.27	2.27	0.03	0.03	0.03	0.03	0.00	0.00	0.00	0.00
Bosnia and Herzegovina	0.01	0.01	0.01	0.01	4.00	3.43	3.43	3.43	0.04	0.02	0.02	0.02	0.00	0.00	0.00	0.00
<b>Turkey</b>	0.14	0.13	0.13	0.13	2.64	2.60	2.62	2.62	0.37	0.33	0.34	0.34	0.00	0.00	0.02	4.62
<b>Mexico</b>	0.05	0.03	0.04	0.04	2.22	2.20	2.00	2.00	0.11	0.06	0.08	0.08	0.00	0.00	0.03	45.45
<b>Others</b>	0.03	0.06	0.05	0.05	1.63	1.68	1.78	1.78	0.05	0.09	0.08	0.08	0.00	0.00	-0.01	-12.77

World and Selected Countries and Regions

**Table 07 Rye Area, Yield, and Production**

Country / Region	Area (Million hectares)				Yield (Metric tons per hectare)				Production (Million metric tons)				Change in Production						
	2022/23	Prel.		2024/25 Proj.		2022/23	Prel.		2024/25 Proj.		2022/23	Prel.		2024/25 Proj.		From last month		From last year	
		2023/24	Dec	Jan	2023/24		Dec	Jan	2023/24	Dec		Jan	MMT	Percent	MMT	Percent			
<b>World</b>	3.69	3.66	3.41	3.32	3.29	3.20	3.22	3.20	12.15	11.71	10.99	10.61	-0.38	-3.46	-1.10	-9.39			
<b>United States</b>	0.14	0.13	0.16	0.16	2.26	2.03	2.29	2.29	0.32	0.26	0.37	0.37	0.00	0.00	0.11	41.67			
<b>Total Foreign</b>	3.55	3.53	3.25	3.15	3.33	3.24	3.27	3.24	11.83	11.44	10.61	10.23	-0.38	-3.58	-1.21	-10.57			
<b>European Union</b>	1.77	1.88	1.75	1.74	4.26	4.06	4.11	4.03	7.55	7.64	7.20	7.02	-0.18	-2.50	-0.62	-8.07			
<b>Former Soviet Union - 12</b>																			
Russia	0.88	0.79	0.66	0.58	2.27	2.15	2.05	2.00	2.00	1.70	1.35	1.15	-0.20	-14.81	-0.55	-32.35			
Belarus	0.30	0.31	0.32	0.32	2.50	2.52	2.38	2.38	0.75	0.78	0.76	0.76	0.00	0.00	-0.02	-2.56			
Ukraine	0.10	0.08	0.07	0.07	3.15	3.00	2.86	2.86	0.32	0.24	0.20	0.20	0.00	0.00	-0.04	-16.67			
Kazakhstan	0.03	0.02	0.02	0.02	1.76	0.86	1.15	1.15	0.06	0.02	0.02	0.02	0.00	0.00	0.01	27.78			
<b>Turkey</b>	0.10	0.11	0.11	0.11	2.79	2.91	2.91	2.91	0.27	0.32	0.32	0.32	0.00	0.00	0.00	0.00			
<b>Canada</b>	0.15	0.12	0.12	0.12	3.42	3.09	3.60	3.60	0.52	0.36	0.42	0.42	0.00	0.00	0.06	17.60			
<b>South America</b>																			
Chile	0.00	0.00	0.00	0.00	5.00	0.00	0.00	0.00	0.01	0.00	0.00	0.00	0.00	100.00	0.00	100.00			
Argentina	0.11	0.12	0.11	0.11	1.66	1.85	1.76	1.76	0.18	0.22	0.19	0.19	0.00	0.00	-0.03	-15.14			
<b>Other Europe</b>																			
Bosnia and Herzegovina	0.00	0.00	0.00	0.00	3.00	3.00	3.00	3.00	0.01	0.01	0.01	0.01	0.00	0.00	0.00	-33.33			
Switzerland	0.00	0.00	0.00	0.00	5.00	5.00	5.00	5.00	0.01	0.01	0.01	0.01	0.00	0.00	0.00	0.00			
Serbia	0.01	0.01	0.01	0.01	3.00	3.33	3.00	3.00	0.02	0.02	0.02	0.02	0.00	0.00	0.00	-10.00			
<b>Australia</b>	0.05	0.05	0.05	0.05	0.71	0.71	0.71	0.71	0.03	0.03	0.03	0.03	0.00	0.00	0.00	0.00			
<b>Others</b>	0.05	0.04	0.04	0.04	2.47	2.32	2.12	2.12	0.12	0.10	0.09	0.09	0.00	0.00	-0.01	-12.75			

World and Selected Countries and Regions

**Table 08 Sorghum Area, Yield, and Production**

Country / Region	Area (Million hectares)				Yield (Metric tons per hectare)				Production (Million metric tons)				Change in Production			
	Prel.		2024/25 Proj.		Prel.		2024/25 Proj.		Prel.		2024/25 Proj.		From last month		From last year	
	2022/23	2023/24	Dec	Jan	2022/23	2023/24	Dec	Jan	2022/23	2023/24	Dec	Jan	MMT	Percent	MMT	Percent
<b>World</b>	40.61	40.04	40.77	40.88	1.42	1.46	1.52	1.50	57.48	58.36	61.83	61.46	-0.36	-0.59	3.10	5.31
<b>United States</b>	1.85	2.48	2.14	2.27	2.58	3.26	3.82	3.85	4.77	8.07	8.15	8.73	0.59	7.21	0.66	8.21
<b>Total Foreign</b>	38.77	37.56	38.64	38.61	1.36	1.34	1.39	1.37	52.71	50.29	53.68	52.73	-0.95	-1.77	2.44	4.85
<b>Africa</b>																
Nigeria	5.70	5.70	6.10	6.10	1.19	1.12	1.13	1.13	6.81	6.40	6.90	6.90	0.00	0.00	0.50	7.81
Ethiopia	1.55	1.48	1.65	1.65	2.67	2.71	2.48	2.48	4.14	4.01	4.10	4.10	0.00	0.00	0.09	2.24
Sudan	7.24	5.99	6.00	6.00	0.72	0.51	0.67	0.55	5.25	3.06	4.00	3.30	-0.70	-17.50	0.25	8.02
Burkina Faso	1.96	1.90	1.90	1.90	1.03	0.98	1.00	1.00	2.01	1.86	1.90	1.90	0.00	0.00	0.04	2.21
Mali	1.64	1.50	1.50	1.50	0.97	1.02	1.00	1.00	1.58	1.53	1.50	1.50	0.00	0.00	-0.03	-1.83
Niger	3.79	3.70	3.70	3.70	0.55	0.46	0.51	0.51	2.10	1.70	1.90	1.90	0.00	0.00	0.20	11.76
Cameroon	0.74	0.74	0.74	0.74	1.62	1.62	1.62	1.62	1.20	1.20	1.20	1.20	0.00	0.00	0.00	0.00
Tanzania	1.00	1.00	1.00	1.00	1.00	1.00	1.00	1.00	1.00	1.00	1.00	1.00	0.00	0.00	0.00	0.00
Egypt	0.15	0.15	0.15	0.15	5.00	5.20	5.27	5.27	0.75	0.78	0.79	0.79	0.00	0.00	0.01	1.28
Uganda	0.32	0.32	0.32	0.32	0.90	0.83	0.84	0.84	0.29	0.27	0.27	0.27	0.00	0.00	0.00	1.50
Ghana	0.31	0.31	0.31	0.31	1.29	1.42	1.13	1.13	0.40	0.44	0.35	0.35	0.00	0.00	-0.09	-20.27
Mozambique	0.29	0.27	0.28	0.28	0.51	0.55	0.33	0.33	0.15	0.15	0.09	0.09	0.00	0.00	-0.06	-40.00
South Africa	0.03	0.04	0.04	0.04	2.76	2.25	3.25	3.25	0.09	0.09	0.13	0.13	0.00	0.00	0.04	44.44
<b>Mexico</b>	1.40	1.29	1.32	1.32	3.50	3.49	3.41	3.41	4.89	4.49	4.50	4.50	0.00	0.00	0.02	0.33
<b>South America</b>																
Argentina	0.50	0.62	0.85	0.85	3.22	3.99	4.24	4.24	1.61	2.49	3.60	3.60	0.00	0.00	1.11	44.75
Brazil	1.42	1.46	1.60	1.60	3.38	3.03	3.13	3.13	4.79	4.43	5.00	5.00	0.00	0.00	0.57	12.97
<b>South Asia</b>																
India	3.54	4.08	4.00	4.00	1.08	1.16	1.10	1.10	3.81	4.74	4.40	4.40	0.00	0.00	-0.34	-7.11
Pakistan	0.06	0.05	0.05	0.05	0.83	0.83	0.82	0.82	0.05	0.04	0.04	0.04	0.00	0.00	0.00	5.13
<b>China</b>	0.68	0.63	0.63	0.63	4.58	4.76	4.76	4.76	3.09	3.00	3.00	3.00	0.00	0.00	0.00	0.00
<b>Australia</b>	0.69	0.60	0.60	0.57	3.84	3.67	4.00	3.68	2.64	2.20	2.40	2.10	-0.30	-12.50	-0.10	-4.55
<b>European Union</b>	0.13	0.15	0.21	0.22	4.18	5.44	5.05	5.16	0.52	0.81	1.06	1.11	0.05	4.72	0.30	37.04
<b>Others</b>	5.65	5.59	5.69	5.69	0.98	1.01	0.97	0.97	5.54	5.63	5.55	5.55	0.00	0.00	-0.08	-1.47

World and Selected Countries and Regions



**Table 09 Rice Area, Yield, and Production**  
**World and Selected Countries and Regions**

Country / Region	Area (Million hectares)				Yield (Metric tons per hectare)				Production (Million metric tons)				Change in Production			
	Prel.		2024/25 Proj.		Prel.		2024/25 Proj.		Prel.		2024/25 Proj.		From last month		From last year	
	2022/23	2023/24	Dec	Jan	2022/23	2023/24	Dec	Jan	2022/23	2023/24	Dec	Jan	MMT	Percent	MMT	Percent
<b>World</b>	165.69	166.11	168.68	168.58	4.66	4.70	4.73	4.72	516.73	522.62	533.68	532.87	-0.81	-0.15	10.25	1.96
<b>United States</b>	0.88	1.16	1.17	1.16	8.28	8.56	8.51	8.69	5.08	6.92	6.98	7.05	0.07	1.06	0.13	1.89
<b>Total Foreign</b>	164.81	164.96	167.51	167.42	4.64	4.67	4.70	4.69	511.65	515.70	526.70	525.81	-0.89	-0.17	10.12	1.96
<b>East Asia</b>																
China	29.45	28.95	29.00	29.01	7.08	7.14	7.19	7.15	145.95	144.62	146.00	145.28	-0.73	-0.50	0.66	0.45
Japan	1.50	1.48	1.46	1.46	6.86	6.78	6.92	6.92	7.48	7.30	7.35	7.35	0.00	0.00	0.05	0.73
Korea, South	0.73	0.71	0.70	0.70	6.87	6.92	6.80	6.80	3.76	3.70	3.59	3.59	0.00	0.00	-0.12	-3.16
Korea, North	0.54	0.53	0.54	0.54	3.87	4.18	4.18	4.18	1.36	1.45	1.47	1.48	0.01	0.54	0.03	1.86
<b>South Asia</b>																
India	47.83	47.83	50.00	50.00	4.26	4.32	4.35	4.35	135.76	137.83	145.00	145.00	0.00	0.00	7.18	5.21
Bangladesh	11.60	11.75	11.50	11.40	4.70	4.72	4.80	4.82	36.35	37.00	36.80	36.60	-0.20	-0.54	-0.40	-1.08
Pakistan	2.98	3.64	3.80	3.80	3.69	4.07	3.95	3.95	7.32	9.87	10.00	10.00	0.00	0.00	0.13	1.33
Nepal	1.45	1.44	1.45	1.45	3.79	3.98	3.79	3.79	3.65	3.81	3.67	3.67	0.00	0.00	-0.15	-3.83
Sri Lanka	1.15	1.16	1.15	1.15	3.61	4.22	4.48	4.48	2.83	3.33	3.50	3.50	0.00	0.00	0.17	5.04
<b>Southeast Asia</b>																
Indonesia	11.30	11.00	11.20	11.20	4.72	4.73	4.78	4.78	33.90	33.02	34.00	34.00	0.00	0.00	0.98	2.97
Vietnam	7.12	6.90	6.95	6.95	6.10	6.10	6.10	6.10	27.14	26.30	26.50	26.50	0.00	0.00	0.20	0.76
Thailand	11.07	10.65	10.70	10.70	2.86	2.85	2.85	2.85	20.91	20.00	20.10	20.10	0.00	0.00	0.10	0.50
Burma	6.80	6.80	6.80	6.80	2.71	2.73	2.72	2.72	11.80	11.90	11.85	11.85	0.00	0.00	-0.05	-0.42
Philippines	4.85	4.74	4.60	4.60	4.13	4.12	4.14	4.14	12.63	12.33	12.00	12.00	0.00	0.00	-0.33	-2.64
Cambodia	3.47	3.58	3.64	3.64	3.31	3.39	3.32	3.32	7.00	7.40	7.38	7.38	0.00	0.00	-0.02	-0.31
Laos	0.96	0.95	0.90	0.90	3.23	3.21	3.19	3.19	1.95	1.92	1.81	1.81	0.00	0.00	-0.11	-5.73
Malaysia	0.66	0.65	0.66	0.66	3.99	3.86	4.08	4.08	1.70	1.62	1.75	1.75	0.00	0.00	0.13	8.02
<b>South America</b>																
Brazil	1.48	1.61	1.70	1.70	6.78	6.60	6.92	6.92	6.82	7.20	8.00	8.00	0.00	0.00	0.80	11.11
Peru	0.42	0.43	0.43	0.43	8.34	8.52	8.60	8.60	2.40	2.50	2.55	2.55	0.00	0.00	0.05	2.00
<b>Africa</b>																
Egypt	0.60	0.63	0.67	0.67	8.70	8.70	8.44	8.44	3.60	3.78	3.90	3.90	0.00	0.00	0.12	3.17
Madagascar	1.60	1.60	1.60	1.60	2.87	2.88	2.88	2.88	2.93	2.94	2.94	2.94	0.00	0.00	0.00	0.00
Nigeria	3.50	3.60	3.50	3.50	2.45	2.47	2.37	2.37	5.41	5.61	5.23	5.23	0.00	0.00	-0.38	-6.74
<b>European Union</b>	0.33	0.35	0.39	0.39	6.09	6.50	6.62	6.62	1.29	1.44	1.67	1.67	0.00	0.00	0.24	16.45
<b>Iran</b>	0.57	0.57	0.57	0.57	5.32	5.30	5.32	5.32	2.00	2.00	2.00	2.00	0.00	0.00	0.01	0.25
<b>Others</b>	12.87	13.43	13.60	13.60	3.03	3.03	3.09	3.09	25.71	26.84	27.65	27.68	0.03	0.11	0.84	3.12

Yield is on a rough basis, before the milling process. Production is on a milled basis, after the milling process.

**Table 10 Total Oilseed Area, Yield, and Production**

**World and Selected Countries and Regions**

Country / Region	Area (Million hectares)				Yield (Metric tons per hectare)				Production (Million metric tons)				Change in Production			
	2022/23	Prel.	2024/25 Proj.		2022/23	Prel.	2024/25 Proj.		2022/23	Prel.	2024/25 Proj.		From last month		From last year	
		2023/24	Dec	Jan		2023/24	Dec	Jan		2023/24	Dec	Jan	MMT	Percent	MMT	Percent
<b>World Total</b>	--	--	--	--	--	--	--	--	638.18	657.05	683.38	680.35	-3.02	-0.44	23.31	3.55
<b>Total Foreign</b>	--	--	--	--	--	--	--	--	512.43	534.89	552.22	551.87	-0.34	-0.06	16.99	3.18
<b>Oilseed, Copra</b>	--	--	--	--	--	--	--	--	6.00	6.21	5.81	5.81	0.00	0.00	-0.40	-6.50
<b>Oilseed, Palm Kernel</b>	--	--	--	--	--	--	--	--	19.75	19.68	20.62	20.62	0.00	0.00	0.94	4.79
<b>Major Oilseeds</b>	268.28	271.26	276.25	275.72	2.28	2.33	2.38	2.37	612.43	631.16	656.95	653.93	-3.02	-0.46	22.77	3.61
<b>United States</b>	39.91	37.98	40.50	40.26	3.15	3.22	3.24	3.19	125.75	122.16	131.16	128.48	-2.68	-2.04	6.32	5.17
<b>Foreign Oilseeds</b>	228.37	233.27	235.75	235.46	2.13	2.18	2.23	2.23	486.68	509.00	525.79	525.45	-0.34	-0.07	16.45	3.23
<b>South America</b>	71.45	74.89	77.62	77.55	3.00	3.10	3.26	3.27	214.26	232.00	253.34	253.22	-0.12	-0.05	21.22	9.15
Brazil	46.46	48.08	49.59	49.59	3.59	3.30	3.54	3.54	166.77	158.64	175.60	175.60	0.00	0.00	16.96	10.69
Argentina	17.76	19.30	20.32	20.32	1.77	2.81	2.86	2.86	31.45	54.24	58.19	58.19	0.00	0.00	3.95	7.28
Paraguay	3.79	3.90	4.02	4.02	2.77	2.88	2.85	2.85	10.47	11.22	11.44	11.44	0.00	0.00	0.23	2.02
Bolivia	2.05	2.09	2.13	2.13	1.94	1.98	2.09	2.09	3.99	4.13	4.44	4.44	0.00	0.00	0.31	7.51
Uruguay	1.28	1.44	1.46	1.39	1.00	2.44	2.31	2.34	1.28	3.51	3.37	3.25	-0.12	-3.56	-0.26	-7.38
<b>China</b>	26.44	26.22	26.20	26.08	2.60	2.62	2.61	2.64	68.72	68.57	68.30	68.96	0.66	0.96	0.39	0.56
<b>South Asia</b>	43.63	44.49	44.06	43.66	1.04	1.03	1.07	1.07	45.22	46.00	47.29	46.66	-0.63	-1.33	0.66	1.43
India	40.19	40.28	40.28	39.88	1.03	1.00	1.06	1.05	41.29	40.37	42.51	42.01	-0.50	-1.18	1.64	4.06
Pakistan	2.51	2.99	2.51	2.51	1.06	1.27	1.22	1.16	2.67	3.81	3.05	2.92	-0.13	-4.26	-0.89	-23.31
<b>European Union</b>	12.32	12.29	11.95	11.95	2.61	2.71	2.45	2.45	32.13	33.34	29.27	29.27	0.00	0.00	-4.07	-12.20
<b>United Kingdom</b>	0.37	0.39	0.28	0.28	3.73	3.11	3.13	3.13	1.36	1.22	0.88	0.88	0.00	0.00	-0.34	-28.04
<b>Former Soviet Union - 12</b>	27.81	29.08	30.89	31.14	1.87	2.04	1.87	1.84	52.05	59.24	57.69	57.34	-0.35	-0.61	-1.89	-3.19
Russia	14.74	14.85	16.00	16.25	1.80	1.89	1.79	1.74	26.55	28.10	28.60	28.25	-0.35	-1.22	0.15	0.53
Ukraine	8.75	10.00	10.45	10.45	2.26	2.55	2.22	2.22	19.80	25.45	23.25	23.25	0.00	0.00	-2.20	-8.64
Uzbekistan	1.07	1.05	1.02	1.02	1.24	1.15	1.22	1.22	1.33	1.21	1.25	1.25	0.00	0.00	0.04	3.23
<b>Canada</b>	10.75	11.16	11.16	11.16	2.37	2.35	2.37	2.37	25.48	26.27	26.42	26.42	0.00	0.00	0.15	0.59
<b>Africa</b>	24.62	24.69	23.63	23.63	1.04	0.97	1.05	1.05	25.67	24.01	24.71	24.71	0.00	0.00	0.70	2.92
Nigeria	4.87	4.87	5.07	5.07	1.15	1.15	1.13	1.13	5.61	5.60	5.75	5.75	0.00	0.00	0.15	2.68
South Africa	1.88	1.87	1.92	1.92	2.02	1.51	2.04	2.04	3.80	2.82	3.91	3.91	0.00	0.00	1.10	38.88
Tanzania	1.36	1.47	1.44	1.44	0.91	0.89	0.87	0.87	1.23	1.31	1.25	1.25	0.00	0.00	-0.05	-4.13
<b>Southeast Asia</b>	3.11	3.07	3.04	3.04	1.38	1.38	1.39	1.39	4.30	4.25	4.24	4.24	0.00	0.00	-0.02	-0.38
Burma	1.98	1.97	1.98	1.98	1.22	1.24	1.26	1.26	2.40	2.44	2.50	2.50	0.00	0.00	0.06	2.25
Indonesia	0.87	0.84	0.81	0.81	1.52	1.49	1.48	1.48	1.32	1.26	1.20	1.20	0.00	0.00	-0.06	-4.38
<b>Australia</b>	4.61	4.04	3.91	3.96	2.13	1.81	1.78	1.78	9.82	7.30	6.96	7.06	0.10	1.44	-0.24	-3.33
<b>Turkey</b>	1.47	1.27	1.28	1.28	2.71	2.43	2.49	2.49	3.98	3.09	3.19	3.19	0.00	0.00	0.10	3.27
<b>Others</b>	1.81	1.70	1.73	1.73	2.03	2.20	2.04	2.04	3.67	3.72	3.52	3.52	0.00	0.00	-0.21	-5.56

World Total and Total Foreign: (Major Oilseeds plus copra and palm kernel) Major Oilseeds: (soybeans, sunflowerseeds, peanuts(inshell), cottonseed and rapeseed)

**Table 11 Soybean Area, Yield, and Production**

Country / Region	Area (Million hectares)				Yield (Metric tons per hectare)				Production (Million metric tons)				Change in Production			
	Prel.		2024/25 Proj.		Prel.		2024/25 Proj.		Prel.		2024/25 Proj.		From last month		From last year	
	2022/23	2023/24	Dec	Jan	2022/23	2023/24	Dec	Jan	2022/23	2023/24	Dec	Jan	MMT	Percent	MMT	Percent
<b>World</b>	137.33	140.47	146.49	146.34	2.75	2.81	2.92	2.90	378.16	394.97	427.14	424.26	-2.88	-0.67	29.29	7.42
<b>United States</b>	34.87	33.29	34.91	34.82	3.33	3.40	3.48	3.41	116.22	113.27	121.42	118.84	-2.58	-2.13	5.56	4.91
<b>Total Foreign</b>	102.46	107.18	111.58	111.51	2.56	2.63	2.74	2.74	261.94	281.69	305.72	305.42	-0.30	-0.10	23.73	8.42
<b>South America</b>																
Brazil	44.60	46.10	47.30	47.30	3.63	3.32	3.57	3.57	162.00	153.00	169.00	169.00	0.00	0.00	16.00	10.46
Argentina	14.40	16.37	17.30	17.30	1.74	2.95	3.01	3.01	25.00	48.21	52.00	52.00	0.00	0.00	3.79	7.86
Paraguay	3.65	3.75	3.85	3.85	2.81	2.93	2.91	2.91	10.25	11.00	11.20	11.20	0.00	0.00	0.20	1.82
Bolivia	1.82	1.85	1.88	1.88	2.01	2.05	2.19	2.19	3.67	3.80	4.10	4.10	0.00	0.00	0.30	7.89
Uruguay	0.93	1.31	1.30	1.30	0.75	2.51	2.38	2.38	0.70	3.29	3.10	3.10	0.00	0.00	-0.19	-5.86
<b>East Asia</b>																
China	10.24	10.47	10.50	10.33	1.98	1.99	1.97	2.00	20.28	20.84	20.70	20.65	-0.05	-0.24	-0.19	-0.91
Korea, South	0.06	0.07	0.07	0.07	2.03	2.07	2.06	2.06	0.13	0.14	0.14	0.14	0.00	0.00	0.00	0.71
Korea, North	0.16	0.16	0.16	0.16	1.15	1.15	1.15	1.15	0.18	0.18	0.18	0.18	0.00	0.00	0.00	0.00
Japan	0.15	0.16	0.16	0.16	1.60	1.59	1.64	1.64	0.24	0.25	0.26	0.26	0.00	0.00	0.01	4.86
<b>India</b>	13.08	13.20	13.50	13.50	0.95	0.90	0.93	0.93	12.41	11.88	12.58	12.58	0.00	0.00	0.71	5.95
<b>Canada</b>	2.12	2.26	2.29	2.29	3.09	3.09	3.30	3.30	6.54	6.98	7.57	7.57	0.00	0.00	0.59	8.41
<b>Former Soviet Union - 12</b>																
Russia	3.36	3.50	4.10	4.20	1.79	1.94	1.78	1.68	6.00	6.80	7.30	7.05	-0.25	-3.42	0.25	3.68
Ukraine	1.82	2.00	2.90	2.90	2.25	2.60	2.28	2.28	4.10	5.20	6.60	6.60	0.00	0.00	1.40	26.92
<b>European Union</b>	1.12	1.03	1.09	1.09	2.34	2.87	2.63	2.63	2.61	2.95	2.85	2.85	0.00	0.00	-0.10	-3.29
<b>Southeast Asia</b>																
Indonesia	0.33	0.32	0.31	0.31	1.18	1.17	1.16	1.16	0.39	0.38	0.36	0.36	0.00	0.00	-0.02	-4.00
Vietnam	0.03	0.03	0.03	0.03	1.60	1.61	1.62	1.62	0.05	0.05	0.04	0.04	0.00	0.00	0.00	-6.67
Thailand	0.03	0.03	0.03	0.03	1.63	1.63	1.63	1.63	0.05	0.05	0.05	0.05	0.00	0.00	0.00	0.00
Burma	0.13	0.12	0.12	0.12	1.04	1.04	1.04	1.04	0.13	0.13	0.12	0.12	0.00	0.00	-0.01	-4.00
<b>Serbia</b>	0.24	0.24	0.24	0.24	1.70	2.77	2.00	2.00	0.40	0.65	0.47	0.47	0.00	0.00	-0.18	-27.69
<b>Mexico</b>	0.12	0.09	0.13	0.13	1.52	2.06	1.68	1.68	0.18	0.19	0.21	0.21	0.00	0.00	0.03	13.51
<b>Africa</b>																
South Africa	1.15	1.15	1.16	1.16	2.41	1.60	2.42	2.42	2.77	1.84	2.80	2.80	0.00	0.00	0.96	52.17
Nigeria	1.20	1.15	1.35	1.35	0.98	1.00	0.96	0.96	1.18	1.15	1.30	1.30	0.00	0.00	0.15	13.04
Zambia	0.38	0.38	0.38	0.38	1.27	1.27	1.27	1.27	0.48	0.48	0.48	0.48	0.00	0.00	0.00	0.00
Uganda	0.22	0.24	0.25	0.25	0.80	0.81	0.82	0.82	0.17	0.19	0.20	0.20	0.00	0.00	0.01	3.09
<b>Middle East</b>																
Iran	0.08	0.07	0.07	0.07	2.27	2.36	2.43	2.43	0.17	0.17	0.17	0.17	0.00	0.00	0.01	3.03
Turkey	0.04	0.03	0.04	0.04	4.14	4.12	4.29	4.29	0.15	0.14	0.15	0.15	0.00	0.00	0.01	7.14
<b>Others</b>	1.03	1.12	1.12	1.12	1.67	1.60	1.59	1.59	1.72	1.78	1.79	1.79	0.00	0.00	0.01	0.34

World and Selected Countries and Regions

**Table 12 Cottonseed Area, Yield, and Production**

Country / Region	Area (Million hectares)				Yield (Metric tons per hectare)				Production (Million metric tons)				Change in Production			
	Prel.		2024/25 Proj.		Prel.		2024/25 Proj.		Prel.		2024/25 Proj.		From last month		From last year	
	2022/23	2023/24	Dec	Jan	2022/23	2023/24	Dec	Jan	2022/23	2023/24	Dec	Jan	MMT	Percent	MMT	Percent
<b>World</b>	31.13	30.53	30.31	30.26	1.36	1.35	1.41	1.43	42.36	41.30	42.61	43.33	0.72	1.69	2.03	4.91
<b>United States</b>	2.95	2.61	3.49	3.35	1.36	1.27	1.13	1.19	4.01	3.31	3.95	3.99	0.05	1.14	0.69	20.78
<b>Total Foreign</b>	28.18	27.92	26.81	26.91	1.36	1.36	1.44	1.46	38.36	38.00	38.66	39.34	0.68	1.75	1.34	3.53
<b>South Asia</b>																
India	12.93	12.68	11.80	11.80	0.86	0.85	0.90	0.90	11.17	10.78	10.61	10.61	0.00	0.00	-0.17	-1.57
Pakistan	1.80	2.40	2.00	2.00	0.94	1.26	1.19	1.13	1.69	3.03	2.38	2.25	-0.13	-5.46	-0.78	-25.69
<b>China</b>	3.10	2.85	2.85	2.90	3.89	3.76	3.88	4.05	12.05	10.72	11.05	11.76	0.71	6.39	1.04	9.69
<b>Former Soviet Union - 12</b>																
Uzbekistan	1.05	1.03	1.00	1.00	1.19	1.10	1.18	1.18	1.25	1.14	1.18	1.18	0.00	0.00	0.04	3.43
Turkmenistan	0.50	0.50	0.50	0.50	0.63	0.63	0.63	0.63	0.31	0.31	0.31	0.31	0.00	0.00	0.00	0.00
Tajikistan	0.18	0.17	0.18	0.18	1.31	1.16	1.08	1.08	0.24	0.19	0.20	0.20	0.00	0.00	0.00	1.56
Kazakhstan	0.13	0.12	0.12	0.12	0.87	1.00	0.98	0.98	0.11	0.12	0.12	0.12	0.00	0.00	0.00	0.00
<b>South America</b>																
Brazil	1.60	1.66	1.97	1.97	2.43	2.91	2.85	2.85	3.89	4.84	5.61	5.61	0.00	0.00	0.77	16.00
Argentina	0.51	0.62	0.60	0.60	0.84	0.98	1.09	1.09	0.43	0.61	0.66	0.66	0.00	0.00	0.05	7.54
<b>Middle East</b>																
Turkey	0.56	0.44	0.47	0.47	2.88	2.38	2.81	2.81	1.60	1.05	1.31	1.31	0.00	0.00	0.26	24.98
Syria	0.03	0.03	0.03	0.03	2.23	2.23	2.23	2.23	0.07	0.07	0.07	0.07	0.00	0.00	0.00	0.00
Iran	0.12	0.10	0.10	0.10	1.52	1.18	1.35	1.35	0.18	0.12	0.14	0.14	0.00	0.00	0.02	14.41
<b>Australia</b>	0.65	0.51	0.55	0.60	2.24	2.48	2.28	2.26	1.45	1.25	1.25	1.35	0.10	7.98	0.10	7.98
<b>European Union</b>	0.31	0.25	0.27	0.27	1.70	1.31	1.47	1.47	0.53	0.33	0.40	0.40	0.00	0.00	0.07	20.66
<b>Africa</b>																
Burkina Faso	0.62	0.46	0.35	0.35	0.35	0.46	0.48	0.48	0.21	0.21	0.17	0.17	0.00	0.00	-0.05	-21.80
Mali	0.60	0.71	0.63	0.63	0.35	0.53	0.48	0.48	0.21	0.38	0.30	0.30	0.00	0.00	-0.07	-19.47
Cameroon	0.23	0.24	0.23	0.23	1.29	1.54	1.48	1.48	0.30	0.37	0.34	0.34	0.00	0.00	-0.03	-8.11
Cote d'Ivoire	0.41	0.40	0.37	0.37	0.29	0.44	0.53	0.53	0.12	0.17	0.20	0.20	0.00	0.00	0.02	12.07
Benin	0.57	0.51	0.55	0.55	0.64	0.73	0.76	0.76	0.36	0.37	0.42	0.42	0.00	0.00	0.04	11.53
Tanzania	0.36	0.47	0.44	0.44	0.37	0.44	0.35	0.35	0.13	0.21	0.15	0.15	0.00	0.00	-0.05	-26.21
Egypt	0.14	0.10	0.13	0.13	0.92	0.96	0.99	0.99	0.13	0.10	0.13	0.13	0.00	0.00	0.03	34.38
Nigeria	0.27	0.27	0.27	0.27	0.56	0.56	0.56	0.56	0.15	0.15	0.15	0.15	0.00	0.00	0.00	0.00
Uganda	0.08	0.06	0.07	0.07	1.16	1.51	1.48	1.48	0.09	0.08	0.10	0.10	0.00	0.00	0.01	15.66
Zimbabwe	0.24	0.24	0.24	0.24	0.34	0.34	0.34	0.34	0.08	0.08	0.08	0.08	0.00	0.00	0.00	0.00
Sudan	0.20	0.20	0.20	0.20	1.53	1.53	1.53	1.53	0.31	0.31	0.31	0.31	0.00	0.00	0.00	0.00
<b>Mexico</b>	0.20	0.13	0.12	0.12	2.70	2.25	2.35	2.35	0.54	0.30	0.28	0.28	0.00	0.00	-0.02	-5.05
<b>Burma</b>	0.19	0.18	0.19	0.19	1.26	1.24	1.24	1.24	0.23	0.23	0.24	0.24	0.00	0.00	0.01	4.42
<b>Others</b>	0.62	0.61	0.60	0.60	0.84	0.81	0.88	0.88	0.53	0.49	0.53	0.53	0.00	0.00	0.04	7.93

World and Selected Countries and Regions

**Table 13 Peanut Area, Yield, and Production**

Country / Region	Area (Million hectares)				Yield (Metric tons per hectare)				Production (Million metric tons)				Change in Production			
	2022/23	Prel.	2024/25 Proj.		2022/23	Prel.	2024/25 Proj.		2022/23	Prel.	2024/25 Proj.		From last month		From last year	
		2023/24	Dec	Jan		2023/24	Dec	Jan		2023/24	Dec	Jan	MMT	Percent	MMT	Percent
<b>World</b>	29.04	29.42	29.00	29.00	1.70	1.68	1.74	1.74	49.44	49.53	50.52	50.49	-0.03	-0.06	0.96	1.93
<b>United States</b>	0.56	0.63	0.71	0.71	4.50	4.23	4.17	4.11	2.51	2.67	2.95	2.93	-0.03	-0.98	0.26	9.71
<b>Total Foreign</b>	28.48	28.79	28.29	28.29	1.65	1.63	1.68	1.68	46.93	46.87	47.56	47.56	0.00	0.00	0.70	1.49
<b>China</b>	4.68	4.80	4.85	4.85	3.91	4.01	3.92	3.92	18.33	19.23	19.00	19.00	0.00	0.00	-0.23	-1.20
<b>Africa</b>																
Nigeria	3.40	3.45	3.45	3.45	1.26	1.25	1.25	1.25	4.28	4.30	4.30	4.30	0.00	0.00	0.00	0.00
Sudan	3.07	3.01	2.00	2.00	0.86	0.46	0.50	0.50	2.64	1.39	1.00	1.00	0.00	0.00	-0.39	-27.85
Senegal	1.23	1.25	1.25	1.25	1.23	1.38	1.36	1.36	1.50	1.73	1.70	1.70	0.00	0.00	-0.03	-1.62
Cameroon	0.43	0.43	0.43	0.43	1.40	1.40	1.40	1.40	0.60	0.60	0.60	0.60	0.00	0.00	0.00	0.00
Ghana	0.37	0.37	0.35	0.35	1.65	1.62	1.57	1.57	0.61	0.60	0.55	0.55	0.00	0.00	-0.05	-8.33
Chad	0.76	0.76	0.76	0.76	1.10	1.09	1.09	1.09	0.83	0.83	0.83	0.83	0.00	0.00	0.00	0.00
Malawi	0.40	0.40	0.40	0.40	0.88	0.88	0.88	0.88	0.35	0.35	0.35	0.35	0.00	0.00	0.00	0.00
Congo (Kinshasa)	0.53	0.53	0.53	0.53	0.91	0.91	0.91	0.91	0.48	0.48	0.48	0.48	0.00	0.00	0.00	0.00
Niger	0.97	0.92	0.92	0.92	0.69	0.65	0.65	0.65	0.67	0.60	0.60	0.60	0.00	0.00	0.00	0.00
Mali	0.43	0.43	0.43	0.43	1.04	1.00	1.00	1.00	0.44	0.43	0.43	0.43	0.00	0.00	0.00	0.00
Uganda	0.46	0.44	0.44	0.44	0.50	0.50	0.50	0.50	0.23	0.22	0.22	0.22	0.00	0.00	0.00	0.00
Burkina Faso	0.63	0.64	0.64	0.64	0.89	0.90	0.90	0.90	0.56	0.58	0.58	0.58	0.00	0.00	0.00	0.00
Guinea	0.90	0.90	0.90	0.90	1.14	1.11	1.11	1.11	1.03	1.00	1.00	1.00	0.00	0.00	0.00	0.00
Egypt	0.06	0.06	0.06	0.06	3.20	3.20	3.20	3.20	0.21	0.21	0.21	0.21	0.00	0.00	0.00	0.00
Central African Republic	0.13	0.13	0.13	0.13	1.15	1.15	1.15	1.15	0.15	0.15	0.15	0.15	0.00	0.00	0.00	0.00
South Africa	0.03	0.04	0.04	0.04	2.29	1.75	2.00	2.00	0.07	0.07	0.08	0.08	0.00	0.00	0.01	14.29
Mozambique	0.38	0.38	0.38	0.38	0.34	0.34	0.34	0.34	0.13	0.13	0.13	0.13	0.00	0.00	0.00	0.00
Cote d'Ivoire	0.17	0.17	0.17	0.17	1.47	1.45	1.45	1.45	0.24	0.24	0.24	0.24	0.00	0.00	0.00	0.00
Benin	0.16	0.24	0.18	0.18	1.03	0.74	0.97	0.97	0.16	0.18	0.18	0.18	0.00	0.00	0.00	-2.23
<b>South Asia</b>																
India	4.96	5.00	5.50	5.50	1.27	1.20	1.29	1.29	6.30	6.00	7.10	7.10	0.00	0.00	1.10	18.33
Pakistan	0.13	0.13	0.13	0.13	0.88	0.88	0.88	0.88	0.12	0.12	0.12	0.12	0.00	0.00	0.00	0.00
<b>Southeast Asia</b>																
Indonesia	0.54	0.52	0.50	0.50	1.72	1.69	1.68	1.68	0.93	0.88	0.84	0.84	0.00	0.00	-0.04	-4.55
Burma	1.07	1.07	1.08	1.08	1.55	1.59	1.63	1.63	1.65	1.70	1.75	1.75	0.00	0.00	0.05	2.94
Vietnam	0.15	0.15	0.14	0.14	2.63	2.62	2.64	2.64	0.40	0.38	0.37	0.37	0.00	0.00	-0.01	-3.39
Thailand	0.02	0.02	0.02	0.02	1.67	1.67	1.67	1.67	0.04	0.04	0.04	0.04	0.00	0.00	0.00	0.00
<b>South America</b>																
Argentina	0.37	0.43	0.45	0.45	2.59	3.43	3.33	3.33	0.96	1.48	1.50	1.50	0.00	0.00	0.02	1.15
Brazil	0.20	0.26	0.26	0.26	3.95	2.88	3.46	3.46	0.79	0.73	0.90	0.90	0.00	0.00	0.17	22.62
<b>Mexico</b>	0.05	0.05	0.05	0.05	1.76	1.74	1.70	1.70	0.09	0.08	0.09	0.09	0.00	0.00	0.01	6.25
<b>Others</b>	1.80	1.81	1.85	1.85	1.18	1.19	1.21	1.21	2.13	2.15	2.25	2.25	0.00	0.00	0.10	4.70

**Table 14 Sunflowerseed Area, Yield, and Production**

Country / Region	Area (Million hectares)				Yield (Metric tons per hectare)				Production (Million metric tons)				Change in Production						
	2022/23	Prel.		2024/25 Proj.		2022/23	Prel.		2024/25 Proj.		2022/23	Prel.		2024/25 Proj.		From last month		From last year	
		2023/24	Dec	Jan	2023/24		Dec	Jan	2023/24	Dec		Jan	MMT	Percent	MMT	Percent			
<b>World</b>	28.30	27.94	27.79	27.89	1.87	2.01	1.82	1.82	52.78	56.02	50.51	50.69	0.18	0.35	-5.33	-9.52			
<b>United States</b>	0.65	0.51	0.28	0.28	1.97	2.00	2.12	1.87	1.27	1.02	0.59	0.52	-0.07	-12.16	-0.50	-49.22			
<b>Total Foreign</b>	27.65	27.43	27.51	27.61	1.86	2.01	1.81	1.82	51.51	55.00	49.92	50.17	0.25	0.50	-4.83	-8.78			
<b>Former Soviet Union - 12</b>																			
Russia	9.11	9.30	9.30	9.40	1.78	1.84	1.75	1.76	16.25	17.10	16.30	16.55	0.25	1.53	-0.55	-3.22			
Ukraine	5.70	6.40	6.20	6.20	2.14	2.42	2.08	2.08	12.20	15.50	12.90	12.90	0.00	0.00	-2.60	-16.77			
Kazakhstan	1.09	1.13	1.25	1.25	1.20	1.10	1.12	1.12	1.30	1.24	1.40	1.40	0.00	0.00	0.16	13.27			
<b>European Union</b>	4.97	4.80	4.91	4.91	1.89	2.11	1.79	1.79	9.39	10.13	8.78	8.78	0.00	0.00	-1.35	-13.28			
<b>South America</b>																			
Argentina	2.45	1.84	1.95	1.95	2.05	2.11	2.05	2.05	5.02	3.90	4.00	4.00	0.00	0.00	0.11	2.70			
Uruguay	0.01	0.00	0.01	0.01	0.91	1.25	1.00	1.00	0.01	0.01	0.01	0.01	0.00	0.00	0.01	100.00			
Bolivia	0.23	0.24	0.25	0.25	1.39	1.38	1.36	1.36	0.32	0.33	0.34	0.34	0.00	0.00	0.01	3.03			
Brazil	0.06	0.06	0.06	0.06	1.52	1.18	1.50	1.50	0.09	0.07	0.09	0.09	0.00	0.00	0.02	26.76			
Paraguay	0.03	0.02	0.03	0.03	1.64	1.63	1.60	1.60	0.04	0.04	0.04	0.04	0.00	0.00	0.00	2.56			
<b>China</b>	0.62	0.70	0.60	0.60	2.79	2.83	2.92	2.92	1.74	1.98	1.75	1.75	0.00	0.00	-0.23	-11.75			
<b>South Asia</b>																			
India	0.36	0.15	0.18	0.18	0.59	0.75	0.63	0.63	0.22	0.11	0.11	0.11	0.00	0.00	0.00	0.89			
Pakistan	0.07	0.08	0.08	0.08	1.72	1.35	1.31	1.31	0.12	0.11	0.11	0.11	0.00	0.00	0.00	-2.78			
<b>Middle East</b>																			
Turkey	0.79	0.70	0.69	0.69	2.41	2.21	1.99	1.99	1.90	1.55	1.38	1.38	0.00	0.00	-0.18	-11.29			
Iran	0.04	0.04	0.04	0.04	1.02	1.05	1.07	1.07	0.04	0.04	0.05	0.05	0.00	0.00	0.00	4.65			
Israel	0.00	0.00	0.00	0.00	2.00	2.00	4.00	4.00	0.00	0.00	0.00	0.00	0.00	0.00	0.00	100.00			
<b>Africa</b>																			
Egypt	0.01	0.01	0.01	0.01	2.75	2.63	2.75	2.75	0.02	0.02	0.02	0.02	0.00	0.00	0.00	4.76			
Morocco	0.03	0.02	0.02	0.02	1.11	1.27	1.17	1.17	0.03	0.03	0.03	0.03	0.00	0.00	0.00	0.00			
South Africa	0.56	0.53	0.54	0.54	1.29	1.20	1.30	1.30	0.72	0.64	0.70	0.70	0.00	0.00	0.07	10.24			
<b>Burma</b>	0.60	0.60	0.60	0.60	0.65	0.65	0.65	0.65	0.39	0.39	0.39	0.39	0.00	0.00	0.00	0.00			
<b>Canada</b>	0.04	0.04	0.02	0.02	2.21	2.30	2.13	2.13	0.08	0.09	0.05	0.05	0.00	0.00	-0.04	-44.57			
<b>Australia</b>	0.03	0.03	0.02	0.02	1.48	1.28	1.55	1.55	0.04	0.03	0.03	0.03	0.00	0.00	0.00	6.25			
<b>Others</b>	0.86	0.73	0.75	0.75	1.83	2.33	1.92	1.92	1.58	1.70	1.44	1.44	0.00	0.00	-0.26	-15.22			

World and Selected Countries and Regions



**Table 15 Rapeseed Area, Yield, and Production**

Country / Region	Area (Million hectares)				Yield (Metric tons per hectare)				Production (Million metric tons)				Change in Production						
	2022/23	Prel.		2024/25 Proj.		2022/23	Prel.		2024/25 Proj.		2022/23	Prel.		2024/25 Proj.		From last month		From last year	
		2023/24	Dec	Jan	2023/24		Dec	Jan	2023/24	Dec		Jan	MMT	Percent	MMT	Percent			
<b>World</b>	42.48	42.90	42.66	42.24	2.11	2.08	2.02	2.02	89.69	89.34	86.18	85.17	-1.01	-1.18	-4.17	-4.67			
<b>United States</b>	0.88	0.94	1.11	1.10	1.98	2.01	2.03	2.00	1.74	1.90	2.25	2.21	-0.04	-1.91	0.31	16.46			
<b>Total Foreign</b>	41.60	41.96	41.55	41.13	2.11	2.08	2.02	2.02	87.95	87.45	83.93	82.96	-0.97	-1.16	-4.49	-5.13			
<b>European Union</b>	5.92	6.21	5.69	5.69	3.31	3.21	3.03	3.03	19.61	19.93	17.24	17.24	0.00	0.00	-2.69	-13.51			
<b>United Kingdom</b>	0.37	0.39	0.28	0.28	3.73	3.11	3.13	3.13	1.36	1.22	0.88	0.88	0.00	0.00	-0.34	-28.04			
<b>Switzerland</b>	0.03	0.03	0.03	0.03	3.68	3.52	3.52	3.52	0.09	0.09	0.09	0.09	0.00	0.00	0.00	0.00			
<b>Canada</b>	8.60	8.86	8.85	8.85	2.19	2.17	2.12	2.12	18.85	19.19	18.80	18.80	0.00	0.00	-0.39	-2.04			
<b>China</b>	7.79	7.40	7.40	7.40	2.10	2.14	2.14	2.14	16.32	15.80	15.80	15.80	0.00	0.00	0.00	0.00			
<b>South Asia</b>																			
India	8.85	9.25	9.30	8.90	1.27	1.25	1.30	1.30	11.20	11.60	12.10	11.60	-0.50	-4.13	0.00	0.00			
Pakistan	0.51	0.38	0.30	0.30	1.46	1.46	1.50	1.50	0.74	0.56	0.45	0.45	0.00	0.00	-0.11	-19.21			
Bangladesh	0.81	1.10	1.10	1.10	1.30	1.46	1.30	1.30	1.05	1.61	1.43	1.43	0.00	0.00	-0.18	-11.01			
<b>Former Soviet Union - 12</b>																			
Russia	2.27	2.05	2.60	2.65	1.89	2.05	1.92	1.75	4.30	4.20	5.00	4.65	-0.35	-7.00	0.45	10.71			
Ukraine	1.23	1.60	1.35	1.35	2.85	2.97	2.78	2.78	3.50	4.75	3.75	3.75	0.00	0.00	-1.00	-21.05			
Belarus	0.36	0.40	0.48	0.48	2.22	2.25	2.25	2.25	0.80	0.90	1.08	1.08	0.00	0.00	0.18	20.00			
Kazakhstan	0.13	0.09	0.15	0.15	1.48	1.32	1.33	1.33	0.19	0.12	0.20	0.20	0.00	0.00	0.08	62.60			
<b>Australia</b>	3.90	3.48	3.30	3.30	2.12	1.71	1.70	1.70	8.27	5.94	5.60	5.60	0.00	0.00	-0.34	-5.66			
<b>South America</b>																			
Chile	0.03	0.03	0.04	0.04	3.73	4.39	3.86	3.86	0.12	0.12	0.14	0.14	0.00	0.00	0.01	9.76			
Paraguay	0.07	0.07	0.08	0.08	1.77	1.50	1.53	1.53	0.12	0.11	0.12	0.12	0.00	0.00	0.01	9.52			
<b>Ethiopia</b>	0.03	0.03	0.03	0.03	1.80	1.80	1.80	1.80	0.05	0.05	0.05	0.05	0.00	0.00	0.00	0.00			
<b>Others</b>	0.72	0.60	0.59	0.52	1.91	2.11	2.06	2.11	1.38	1.27	1.22	1.10	-0.12	-9.82	-0.17	-13.16			

World and Selected Countries and Regions

**Table 16 Copra, Palm Kernel, and Palm Oil Production**

Country / Region	Production (Million metric tons)				Change in Production			
	2022/23	Prel.	2024/25 Proj.		From last month		From last year	
		2023/24	Dec	Jan	MMT	Percent	MMT	Percent
<b>Oilseed, Copra</b>								
Philippines	2.60	2.90	2.50	2.50	0.00	0.00	-0.40	-13.79
Indonesia	1.68	1.69	1.68	1.68	0.00	0.00	-0.01	-0.59
India	0.94	0.94	0.94	0.94	0.00	0.00	0.00	0.00
Vietnam	0.29	0.29	0.29	0.29	0.00	0.00	0.00	0.00
Papua New Guinea	0.10	0.09	0.10	0.10	0.00	0.00	0.01	11.11
Sri Lanka	0.07	0.07	0.07	0.07	0.00	0.00	0.00	0.00
Thailand	0.07	0.07	0.07	0.07	0.00	0.00	0.00	0.00
Mexico	0.05	0.05	0.05	0.05	0.00	0.00	0.00	0.00
Cote d'Ivoire	0.03	0.03	0.03	0.03	0.00	0.00	0.00	0.00
Malaysia	0.03	0.03	0.03	0.03	0.00	0.00	0.00	0.00
World	6.00	6.21	5.81	5.81	0.00	0.00	-0.40	-6.44
<b>Oilseed, Palm Kernel</b>								
Indonesia	11.70	11.00	12.09	12.09	0.00	0.00	1.09	9.91
Malaysia	4.49	4.83	4.63	4.63	0.00	0.00	-0.20	-4.14
Nigeria	0.90	1.10	1.10	1.10	0.00	0.00	0.00	0.00
Thailand	0.86	0.94	0.96	0.96	0.00	0.00	0.02	2.13
Colombia	0.32	0.33	0.33	0.33	0.00	0.00	0.01	3.13
Guatemala	0.18	0.18	0.19	0.19	0.00	0.00	0.00	0.00
Papua New Guinea	0.17	0.18	0.18	0.18	0.00	0.00	0.00	0.00
Brazil	0.15	0.16	0.16	0.16	0.00	0.00	0.00	0.00
Honduras	0.16	0.16	0.16	0.16	0.00	0.00	0.00	0.00
Cameroon	0.15	0.15	0.15	0.15	0.00	0.00	0.00	0.00
World	19.75	19.68	20.62	20.62	0.00	0.00	0.94	4.78
<b>Oil, Palm</b>								
Indonesia	45.00	43.00	46.50	46.50	0.00	0.00	3.50	8.14
Malaysia	18.39	19.71	19.30	19.30	0.00	0.00	-0.41	-2.08
Thailand	3.33	3.60	3.70	3.70	0.00	0.00	0.10	2.78
Colombia	1.85	1.88	1.90	1.90	0.00	0.00	0.02	1.06
Nigeria	1.40	1.50	1.50	1.50	0.00	0.00	0.00	0.00
Guatemala	1.01	0.89	0.99	0.99	0.00	0.00	0.10	11.24
Papua New Guinea	0.80	0.82	0.83	0.83	0.00	0.00	0.01	1.22
Cote d'Ivoire	0.60	0.60	0.60	0.60	0.00	0.00	0.00	0.00
Honduras	0.60	0.60	0.60	0.60	0.00	0.00	0.00	0.00
Brazil	0.57	0.59	0.60	0.60	0.00	0.00	0.02	3.45
World	76.63	76.26	79.63	79.63	0.00	0.00	3.37	4.42

World and Selected Countries and Regions

**Table 17 Cotton Area, Yield, and Production**

Country / Region	Area (Million hectares)				Yield (Kilograms per hectare)				Production (Million 480 lb. bales)				Change in Production			
	Prel.		2024/25 Proj.		Prel.		2024/25 Proj.		Prel.		2024/25 Proj.		From last month		From last year	
	2022/23	2023/24	Dec	Jan	2022/23	2023/24	Dec	Jan	2022/23	2023/24	Dec	Jan	MBales	Percent	MBales	Percent
<b>World</b>	31.60	31.17	30.90	30.85	801	789	827	843	116.30	112.98	117.39	119.45	2.06	1.75	6.47	5.72
<b>United States</b>	2.95	2.61	3.49	3.35	1,068	1,008	888	938	14.47	12.07	14.26	14.41	0.16	1.12	2.35	19.46
<b>Total Foreign</b>	28.65	28.57	27.41	27.51	774	769	819	831	101.83	100.92	103.13	105.03	1.90	1.84	4.12	4.08
<b>South Asia</b>																
India	12.93	12.68	11.80	11.80	443	436	461	461	26.30	25.40	25.00	25.00	0.00	0.00	-0.40	-1.57
Pakistan	1.80	2.40	2.00	2.00	472	635	599	566	3.90	7.00	5.50	5.20	-0.30	-5.45	-1.80	-25.71
<b>China</b>	3.10	2.85	2.85	2.90	2,160	2,089	2,154	2,252	30.75	27.35	28.20	30.00	1.80	6.38	2.65	9.69
<b>South America</b>																
Brazil	1.60	1.66	1.97	1.97	1,595	1,911	1,868	1,868	11.72	14.57	16.90	16.90	0.00	0.00	2.33	15.99
Argentina	0.51	0.62	0.60	0.60	495	578	644	644	1.17	1.65	1.78	1.78	0.00	0.00	0.13	7.58
Paraguay	0.05	0.06	0.07	0.07	890	812	837	837	0.18	0.21	0.25	0.25	0.00	0.00	0.05	21.95
<b>Africa</b>																
Burkina Faso	0.62	0.46	0.35	0.35	273	361	379	379	0.78	0.77	0.60	0.60	0.00	0.00	-0.17	-21.57
Mali	0.60	0.71	0.63	0.63	269	407	373	373	0.74	1.33	1.07	1.07	0.00	0.00	-0.26	-19.43
Cote d'Ivoire	0.41	0.40	0.37	0.37	236	358	430	430	0.45	0.65	0.73	0.73	0.00	0.00	0.08	12.31
Benin	0.57	0.51	0.55	0.55	418	482	503	503	1.10	1.13	1.26	1.26	0.00	0.00	0.13	11.50
Egypt	0.14	0.10	0.13	0.13	661	686	712	712	0.43	0.32	0.43	0.43	0.00	0.00	0.11	34.92
Cameroon	0.23	0.24	0.23	0.23	563	671	644	644	0.60	0.74	0.68	0.68	0.00	0.00	-0.06	-8.11
Tanzania	0.36	0.47	0.44	0.44	184	220	173	173	0.31	0.47	0.35	0.35	0.00	0.00	-0.12	-25.53
Nigeria	0.27	0.27	0.27	0.27	282	282	282	282	0.35	0.35	0.35	0.35	0.00	0.00	0.00	0.00
Zimbabwe	0.24	0.24	0.24	0.24	195	195	195	195	0.22	0.22	0.22	0.22	0.00	0.00	0.00	0.00
Ethiopia	0.05	0.06	0.06	0.06	726	713	713	713	0.18	0.18	0.18	0.18	0.00	0.00	0.00	0.00
<b>Former Soviet Union - 12</b>																
Uzbekistan	1.05	1.03	1.00	1.00	663	613	653	653	3.20	2.90	3.00	3.00	0.00	0.00	0.10	3.45
Turkmenistan	0.50	0.50	0.50	0.50	348	348	348	348	0.80	0.80	0.80	0.80	0.00	0.00	0.00	0.00
Tajikistan	0.18	0.17	0.18	0.18	726	647	605	605	0.60	0.49	0.50	0.50	0.00	0.00	0.01	2.04
Kazakhstan	0.13	0.12	0.12	0.12	487	558	544	544	0.28	0.30	0.30	0.30	0.00	0.00	0.00	0.00
<b>Middle East</b>																
Turkey	0.56	0.44	0.47	0.47	1,922	1,583	1,873	1,873	4.90	3.20	4.00	4.00	0.00	0.00	0.80	25.00
Syria	0.03	0.03	0.03	0.03	1,161	1,161	1,161	1,161	0.16	0.16	0.16	0.16	0.00	0.00	0.00	0.00
Iran	0.12	0.10	0.10	0.10	977	762	871	871	0.53	0.35	0.40	0.40	0.00	0.00	0.05	14.29
<b>Australia</b>	0.65	0.51	0.55	0.60	1,943	2,156	1,979	1,960	5.80	5.00	5.00	5.40	0.40	8.00	0.40	8.00
<b>Mexico</b>	0.20	0.13	0.12	0.12	1,720	1,435	1,497	1,497	1.58	0.87	0.83	0.83	0.00	0.00	-0.05	-5.17
<b>Burma</b>	0.19	0.18	0.19	0.19	664	654	654	654	0.56	0.55	0.57	0.57	0.00	0.00	0.02	4.39
<b>Others</b>	1.58	1.65	1.62	1.62	590	525	551	551	4.27	3.98	4.09	4.09	0.00	0.00	0.11	2.79

World and Selected Countries and Regions

**TABLE 18**

The table below presents a record of the January projection and the final estimate. Using world wheat production as an example, the "root mean square error" means that chances are 2 out of 3 that the current forecast will not be above or below the final estimate by more than 0.7 percent. Chances are 9 out of 10 (90% confidence level) that the difference will not exceed 1.1 percent. The average difference between the January projection and the final estimate is 3.1 million tons, ranging from 0 million to 8.3 million tons. The January projection has been below the estimate 33 times and above 9 times.

**RELIABILITY OF PRODUCTION PROJECTIONS 1/**

COMMODITY AND REGION	Root mean square error	90 percent confidence interval	Difference between forecast and final estimate				
			Average	Smallest	Largest	Years	
						Below final	Above final
	Percent		---Million metric tons---				
<b>WHEAT</b>							
World	0.7	1.1	3.1	0.0	8.3	33	9
U.S.	0.2	0.3	0.1	0.0	0.3	18	12
Foreign	0.8	1.3	3.1	0.1	8.3	32	10
<b>COARSE GRAINS 2/</b>							
World	1.3	2.2	11.0	0.0	37.7	30	12
U.S.	0.4	0.7	0.4	0.0	4.6	17	12
Foreign	1.8	3.1	10.9	0.0	37.6	29	13
<b>RICE (Milled)</b>							
World	1.6	2.7	5.0	0.0	13.9	35	6
U.S.	1.6	2.6	0.1	0.0	0.3	13	7
Foreign	1.6	2.8	5.0	0.1	13.9	36	6
<b>SOYBEANS</b>							
World	3.4	5.7	5.5	0.0	22.4	22	20
U.S.	1.3	2.3	0.7	0.0	2.5	18	19
Foreign	5.7	9.5	5.6	0.2	22.6	22	20
<b>COTTON</b>			---Million 480-lb. bales---				
World	2.5	4.3	1.9	0.0	5.4	26	15
U.S.	1.2	1.9	0.1	0.0	0.4	14	27
Foreign	3.1	5.2	1.9	0.0	5.7	29	12
<b>UNITED STATES</b>			-----Million bushels-----				
<i>CORN</i>	0.4	0.7	14	0	148	4	7
<i>SORGHUM</i>	1.0	1.6	2	0	53	1	3
<i>BARLEY</i>	0.9	1.6	1	0	11	21	4
<i>OATS</i>	0.4	0.7	0	0	2	5	4

1/ Marketing years 1981/82 through 2023/24 for grains, soybeans, and cotton. Final for grains, soybeans, and cotton is defined as the first November estimate following the marketing year for 1981/82 through 2022/23, and for 2023/24 the last month's estimate.

2/ Includes corn, sorghum, barley, oats, rye, millet, and mixed grain