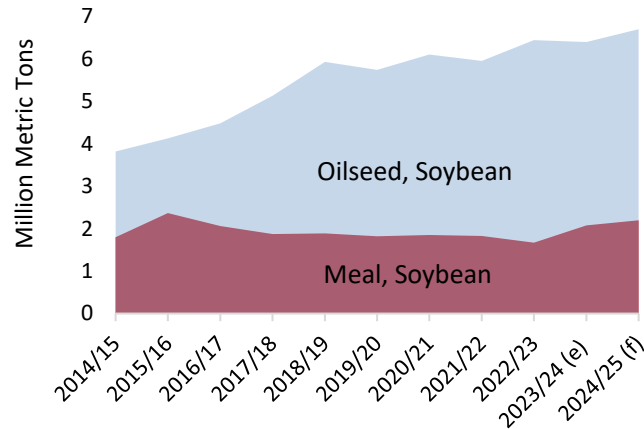


Oilseeds: World Markets and Trade

Lower Prices Propel Mexico 2023/24 Soybean Meal Imports

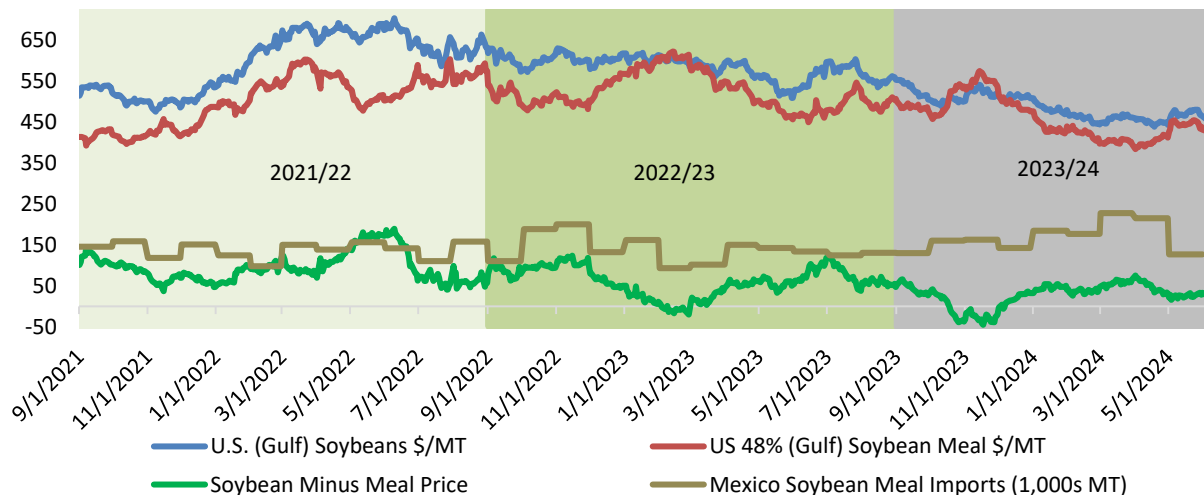
Mexico soybean meal imports are expected to continue rebounding from the 9-year low seen in 2022/23, reaching the second highest total ever at over 2 million tons in 2024/25. Limited domestic soybean production makes Mexico structurally dependent on imports for livestock feed. Feed manufacturers evaluate the cost of utilizing domestically crushed soybeans or importing meal to supply their operations. The 2023/24 marketing year has seen strong import demand for soybean meal supplied by the United States due to competitive prices.

Mexico Imports



Back in 2022/23, lower Mexico soybean meal imports can be attributed to high soybean meal prices owing to reduced global supplies. In 2022/23, Argentina, historically the world's top soybean meal exporter, experienced a significant drought that reduced soybean yields and soybean meal exportable supplies. As a result, soybean meal prices increased relative to soybeans, and Mexico's feed industry turned to domestic crushers to support the growing demand from their livestock-producing customers. To support larger crush, Mexico increased soybean imports to record levels in 2022/23.

Mexico Soybean Meal Imports and U.S. Soybean and Soybean Meal Export Prices



Source: IGC and Trade Data Monitor LLC

Approved by the World Agricultural Outlook Board/USDA

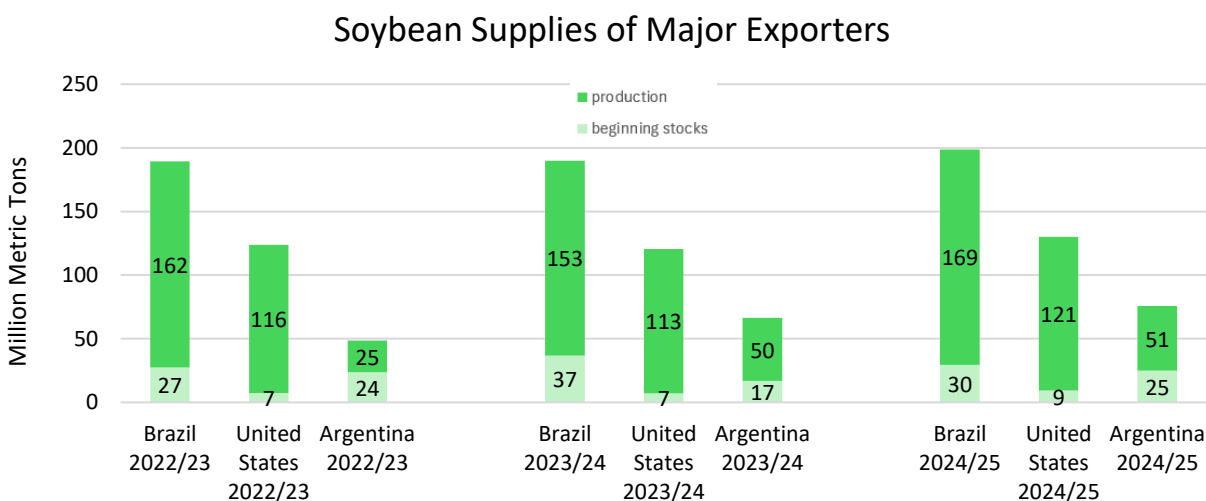
For email subscription, click here to register:

<https://public.govdelivery.com/accounts/USDAFAS/subscriber/new>

In 2023/24, a number of factors eased global soybean meal availability and pressured prices. First, a rebound in Argentina soybean production allowed for crush to return to normal levels. Also, record Brazil soybean meal exports, and rising U.S. crush increased global exportable supplies. Lower meal prices and continued expansion in the Mexico livestock industry is increasing demand for meal in 2023/24. As a result, Mexico soybean meal imports are up by 24 percent while soybean imports are relatively flat.

The outlook for 2024/25 is bound by many of the same fundamentals seen in 2023/24. Large U.S. soybean crush and higher Brazil soybean production are expected to continue. Growing Mexico livestock and poultry production is expected to drive further increases in Mexico soybean meal consumption. Both soybean and soybean meal imports are forecast to continue expanding, and soybean imports are expected at a record in 2024/25 and soybean meal at the second highest level on record.

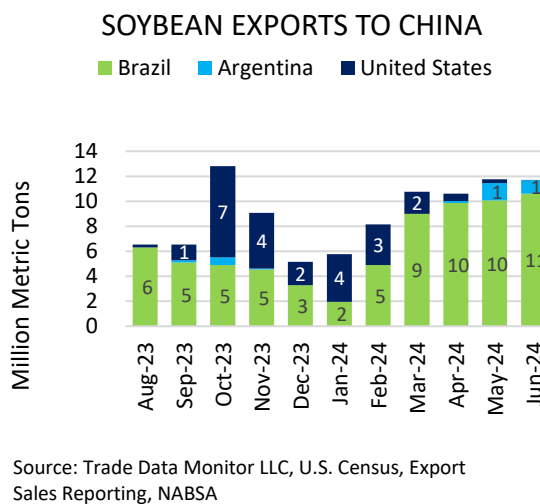
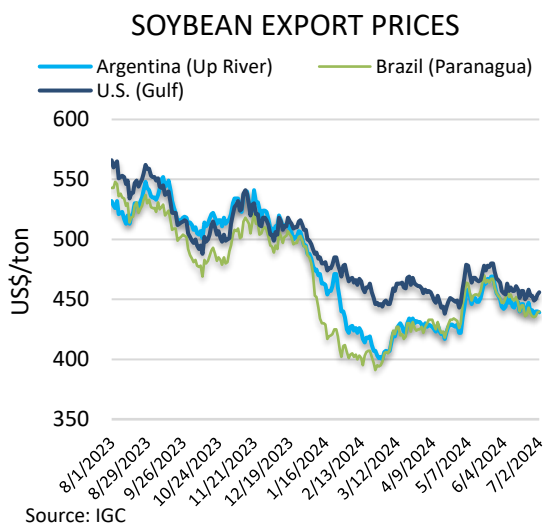
China Seizes Opportunity from Lower South America Soybean Prices



This month, USDA raised the 2023/24 China soybean import forecast by 3 million tons to a record 108 million. This large import volume is driven by falling soybean export prices pressured by robust South America supplies. Due to the strong pace of exports to date, USDA also increased Brazil and Argentina soybean export projections for the October 2023 – September 2024 marketing year by 1 million tons each to 103 million and nearly 6 million tons, respectively. The local year exports for Brazil (local year 2023/24, January – December 2024) were left unchanged at 97 million tons.

Larger 2023/24 carryin supplies in October 2023 allowed Brazil to continue exporting substantial volumes at highly competitive prices during the traditional U.S. shipping window last fall. With another large harvest coming to an end in the Southern Hemisphere, as well as devaluation of Brazilian real, soybean export prices are back to a downtrend which accelerated China buying in the past two months. Combined Brazil and Argentina soybean exports to China between August-June are estimated at 74 million tons. In contrast, U.S. exports to China during the same time period dropped to nearly 25 million tons, more than a 20 percent decline compared to the prior year.

Over the next few months, the market’s attention will likely turn away from South America and toward U.S. harvest progress and crop size. With highly competitive Brazil prices, another year of abundant Brazil carryout, and new record production prospects for the Southern Hemisphere in 2024/25, U.S. soybean exports may continue to experience greater competition after harvest.



OVERVIEW 2024/25

The global oilseeds production forecast is raised approximately 300,000 tons to 686.1 million this month largely on a greater Canada rapeseed outlook along with higher U.S. cottonseed and peanuts. Reduced Russia sunflowerseed and U.S. soybeans lowered the net global production increase. Oilseeds trade is increased 500,000 tons on higher Canada rapeseed exports. Oilseed ending stocks are forecast slightly higher with greater rapeseed, peanut, and sunflowerseed carryout more than offsetting lower soybean ending stocks. Global crush is reduced on lower sunflowerseed utilization. Global meal trade is down almost 300,000 tons primarily on lower Russia and Ukraine sunflowerseed meal exports. Global vegetable oil trade is down slightly on lower Russia and Ukraine sunflowerseed oil exports.

The projected U.S. season-average farm price for soybeans is down 10 cents to \$11.10 per bushel.

OVERVIEW 2023/24

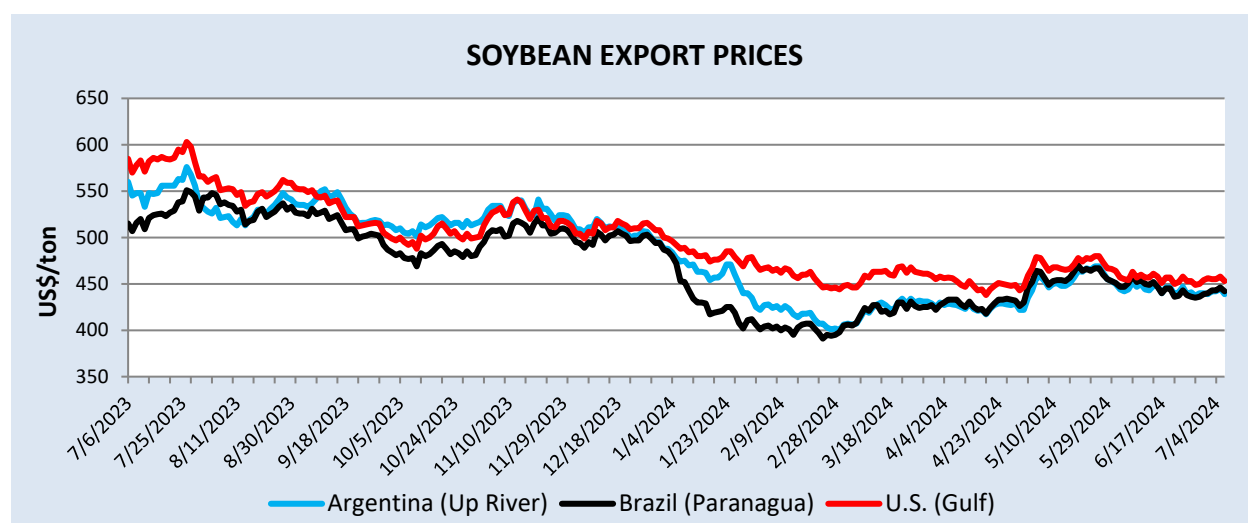
The global oilseeds production estimate is raised almost 400,000 on greater rapeseed, peanut, and sunflowerseed production in China, more than offsetting lower soybean production in Argentina and reduced rapeseed for India. Global oilseeds trade is almost 3 million higher largely on increased Argentina and Brazil soybean exports, primarily to China. Global oilseeds ending stocks are raised slightly on larger soybean, sunflowerseed, and rapeseed carryout. Oilseed crush is raised 400,000 on greater peanut and rapeseed utilization. Global meal trade is raised over 1 million tons on greater Brazil and China soybean meal exports. Vegetable oil trade is reduced over 900,000 on lower palm and soybean oil trade.

The projected U.S. season-average farm price for soybeans is down 5 cents to \$12.50 per bushel.

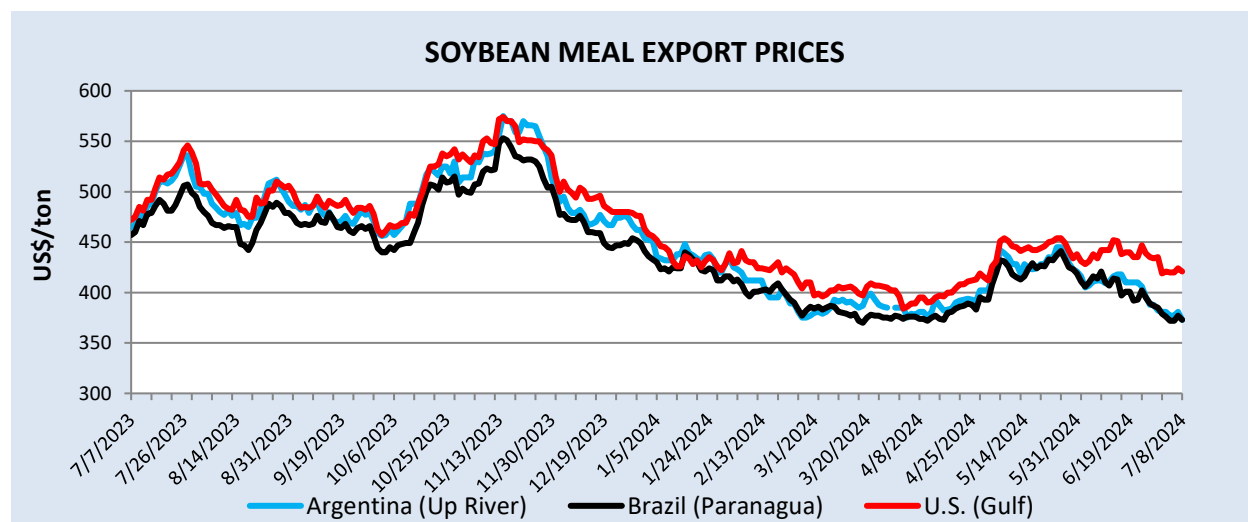
EXPORT PRICES

In June, soybean prices were pressured as the U.S. crop progressed under favorable weather conditions. U.S. soybean meal prices declined in tandem with soybean prices. The combination of higher U.S. soybean oil exports in April and May, as well as a recent rally in palm oil prices in Malaysia, strengthened U.S. soybean oil prices. In Brazil, the decline of the real against the dollar, encouraged farmers to boost soybean sales. This led to an acceleration in China purchases and increased Brazil exports in June. Although Brazil and Argentina soybean prices followed U.S. declines, South America remained more competitive on the global market. A weaker real is likely to encourage more Brazil exports and continue to put pressure on future sales in the United States.

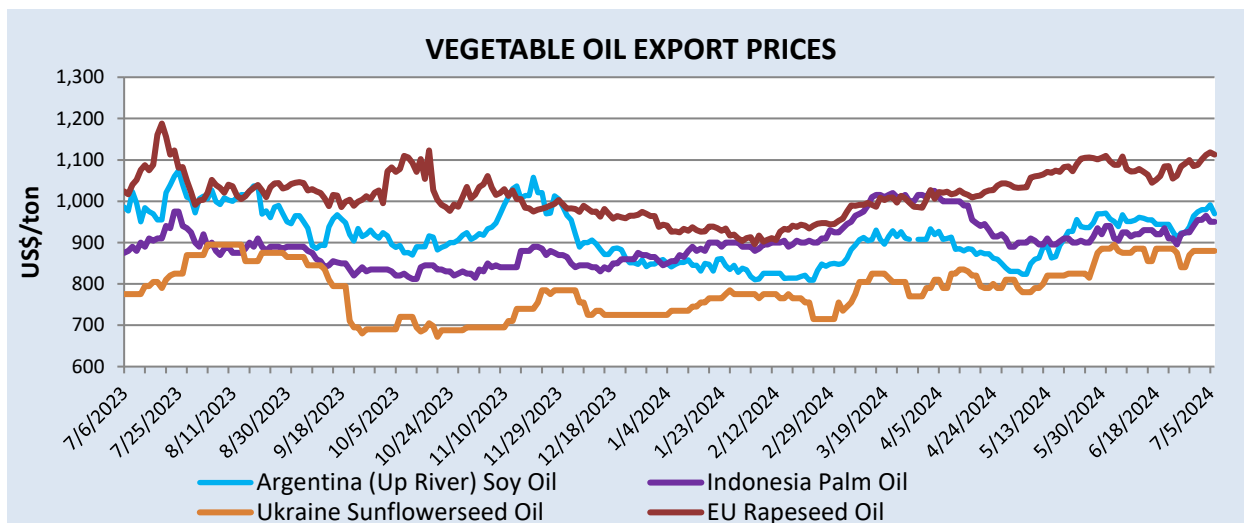
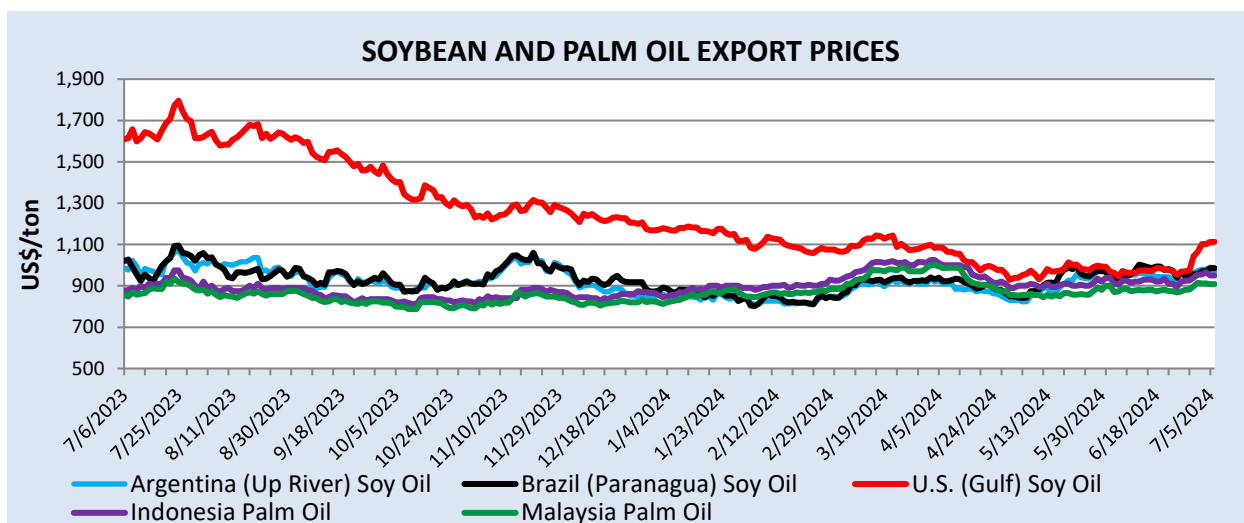
Soybean meal prices in South America followed the downtrend in soybeans. Both Brazil and Argentina continue to supply significant amounts of meal to global markets as crush increased following the influx of harvested soybeans. Soybean oil prices in South America recorded a slight uptick in recent month, most likely following U.S. and Malaysian price hikes.



Source: International Grains Council. All prices are FOB: U.S. Gulf, Argentina Up River, and Brazil Paranagua.



Source: International Grains Council. All prices are FOB: U.S. Gulf, Argentina Up River, and Brazil Paranagua.



2024/25 OUTLOOK CHANGES (All figures are in thousand metric tons)

Country	Commodity	Attribute	Previous	Current	Change	Reason
Canada	Oilseed, Rapeseed	Exports	7,050	7,450	400	Larger crop
China	Meal, Sunflowerseed	Imports	3,500	3,300	-200	Fewer exportable supplies from Black Sea region
China	Oil, Sunflowerseed	Imports	1,450	1,300	-150	
China	Oilseed, Rapeseed	Imports	3,200	3,700	500	Higher global exportable supplies
India	Oil, Palm	Imports	9,200	9,400	200	Higher global exportable supplies

India	Oil, Sunflowerseed	Imports	2,200	2,050	-150	Fewer exportable supplies from Black Sea region
Malaysia	Oil, Palm	Exports	15,900	16,100	200	Larger crop
Russia	Oil, Sunflowerseed	Exports	4,350	4,150	-200	Smaller crop

2023/24 OUTLOOK CHANGES (All figures are in thousand metric tons) – Trade pace to date.

Country	Commodity	Attribute	Previous	Current	Change
Argentina	Oilseed, Soybean	Exports	4,600	5,600	1,000
Argentina	Oilseed, Soybean	Imports	6,500	6,700	200
Australia	Oilseed, Rapeseed	Exports	4,600	4,900	300
Brazil	Meal, Soybean	Exports	21,100	21,800	700
Brazil	Oil, Soybean	Exports	1,800	1,400	-400
Brazil	Oilseed, Soybean	Exports	102,000	103,000	1,000
Brazil	Oilseed, Soybean	Imports	600	750	150
China	Meal, Soybean	Exports	1,000	1,300	300
China	Oil, Palm	Imports	5,900	5,400	-500
China	Oil, Sunflowerseed	Imports	1,450	1,250	-200
China	Oilseed, Rapeseed	Imports	3,400	3,700	300
China	Oilseed, Soybean	Imports	105,000	108,000	3,000
European Union	Meal, Sunflowerseed	Exports	750	900	150
European Union	Meal, Soybean	Imports	15,800	16,100	300
European Union	Oilseed, Soybean	Imports	14,300	13,800	-500
India	Oil, Sunflowerseed	Imports	2,900	3,100	200
Indonesia	Oil, Palm	Exports	26,750	26,000	-750
Iran	Meal, Soybean	Imports	1,600	2,500	900
Malaysia	Oil, Palm	Imports	800	550	-250
Paraguay	Oilseed, Soybean	Exports	6,650	6,850	200
Thailand	Meal, Soybean	Imports	3,150	3,000	-150
Thailand	Oilseed, Soybean	Imports	3,900	3,700	-200
Turkey	Oil, Sunflowerseed	Imports	1,275	1,475	200

ENDNOTES

REGION DEFINITIONS

North America: Canada, Mexico, the United States

Central America: Belize, Costa Rica, El Salvador, Guatemala, Honduras, Nicaragua, Panama

Caribbean: Cuba, Dominican Republic, Haiti, Jamaica, Trinidad and Tobago

South America: Argentina, Bolivia, Brazil, Chile, Colombia, Ecuador, Guyana, Paraguay, Peru, Suriname, Uruguay, Venezuela

EU: Austria, Belgium/Luxembourg, Bulgaria, Croatia, Cyprus, Czech Republic, Denmark, Estonia, Finland, France, Germany, Greece, Hungary, Ireland, Italy, Latvia, Lithuania, Malta, Netherlands, Poland, Portugal, Romania, Slovakia, Slovenia, Spain, and Sweden. Effective January 1, 2021, the separation of the United Kingdom (UK) from the European Union (EU) was complete, including trade between both entities. Starting in May 2021 with the release of 2021/22 data, grain PSDs reflect EU27 (shown in the PSD system as “European Union”) and UK separately. Beginning with the release of 2021/22 data, historical data for both EU27 and the UK are provided for 5 years (2016/17 through 2020/21).

Other Europe: Albania, Bosnia and Herzegovina, Former Yugoslavia, Gibraltar, Iceland, North Macedonia, Montenegro, Norway, Serbia, Switzerland, United Kingdom

Former Soviet Union: Armenia, Azerbaijan, Belarus, Georgia, Kazakhstan, Kyrgyzstan, Moldova, Russia, Tajikistan, Turkmenistan, Ukraine, Uzbekistan

Middle East: Afghanistan, Bahrain, Iran, Iraq, Israel, Jordan, Kuwait, Lebanon, Oman, Qatar, Saudi Arabia, Syria, Turkey, United Arab Emirates, and Yemen

North Africa: Algeria, Egypt, Libya, Morocco, Tunisia

Sub-Saharan Africa: all African countries except North Africa

East Asia: China, Hong Kong, Japan, South Korea, North Korea, Macau, Mongolia, Taiwan

South Asia: Bangladesh, Bhutan, India, Nepal, Pakistan, Sri Lanka

Southeast Asia: Brunei, Burma, Cambodia, Indonesia, Laos, Malaysia, Philippines, Singapore, Thailand, Vietnam

Oceania: Australia, Fiji, New Zealand, Papua New Guinea

OTHER NOTES

Marketing Years (MY): MY refers to the 12-month period at the onset of the main harvest, when the crop is marketed (i.e., consumed, traded, or stored). The year first listed begins a country's MY for that commodity (2022/23 starts in 2022); except for oilseeds in certain Southern Hemisphere countries, where the second year begins the MY (2022/23 starts in 2023). For a complete list of local marketing years, please see the FAS website (<https://apps.fas.usda.gov/psdonline/>): go to Reports, Reference Data, and then Data Availability.

Stocks: Unless otherwise stated, stock data are based on an aggregate of differing local marketing years and should not be construed as representing world stock levels at a fixed point in time.

Consumption: World totals for consumption reflect total utilization, including food, seed, industrial, feed, and waste; as well as differences in local marketing year imports and local marketing year exports. Consumption statistics for regions and individual countries, however, reflect food, seed, industrial, feed, and waste only.

Trade: All PSD tables are balanced on the different local marketing years.

Oilseeds HS Codes

	Seed	Meal	Oil
Soybeans	1201	2304, 230250, 120810	1507
Peanuts	Unshelled: 120210, 120241 Shelled: 120220, 120242, 120230, 200811XX ^[1]	2305	1508
Copra	1203	230650	151311, 151319
Rapeseed	1205	230640, 230641, 230649	1514
Sunflowerseed	1206	230630	151211, 151219
Palm Kernel	120710	230660	151321, 151329
Cottonseed	120720, 120721, 120729	230610	151221, 151229
Palm			1511
Olive			1509, 1510
Fish		230120	

^[1] Peanut butter is found at the 8- or 10-digit level and varies by reporting country. Argentina and India do not report peanut butter trade.

The Global Commodity Analysis Division, Global Market Analysis, Foreign Agricultural Service, USDA, Washington, DC 20250 prepared this publication. Information is gathered from official statistics of foreign governments and other foreign source materials, reports of U.S. agricultural attachés and Foreign Service officers, office research, and related information. Further information may be obtained by writing the Division.

Note: For further details on world oilseeds production, please see [World Agricultural Production](#). This publication is available in its entirety on the Internet via the Foreign Agricultural Service Home Page. The address is: <http://www.fas.usda.gov>

Questions may be directed to:

Agata Kingsbury	(202) 869-9047	Agata.Kingsbury@usda.gov
Luke Cummings	(202) 777-9015	Luke.Cummings@usda.gov
Alex Beckman	(202) 649-3865	Alexander.Beckman@usda.gov
Emma Aspell	(202) 720-9713	Emma.Aspell@usda.gov

To download the tables in the publication, go to the Production, Supply, and Distribution Database (PSD Online): (<http://apps.fas.usda.gov/psdonline/psdHome.aspx>), scroll down to Reports, and click the plus sign [+] next to Oilseeds.

The Foreign Agricultural Service (FAS) updates its production, supply, and distribution (PSD) database for cotton, oilseeds, and grains at 12:00 p.m. on the day the *World Agricultural Supply and Demand Estimates* (WASDE) report is released. This circular is released by 12:15 p.m.

FAS Reports and Databases:

Current *World Markets and Trade* and *World Agricultural Production* Reports:

<http://apps.fas.usda.gov/psdonline/psdDataPublications.aspx>

Archives *World Markets and Trade* and *World Agricultural Production* Reports:

<http://usda.mannlib.cornell.edu/MannUsda/viewTaxonomy.do?taxonomyID=7>

Production, Supply and Distribution Database (PSD Online):

<http://apps.fas.usda.gov/psdonline/psdHome.aspx>

Global Agricultural Trade System (U.S. Exports and Imports):

<http://apps.fas.usda.gov/gats/default.aspx>

Export Sales Report:

<http://apps.fas.usda.gov/esrquery/>

Global Agricultural Information Network (Agricultural Attaché Reports):

<http://gain.fas.usda.gov/Pages/Default.aspx>

Other USDA Reports:

World Agricultural Supply and Demand Estimates (WASDE):

<http://www.usda.gov/oce/commodity/wasde/>

Economic Research Service:

<http://www.ers.usda.gov/topics/crops>

National Agricultural Statistics Service:

<http://www.nass.usda.gov/Publications/>

List of Tables

SUMMARY TABLES

Table 01	Major Oilseeds: World Supply and Distribution (Commodity View)
Table 02	Major Protein Meals: World Supply and Distribution (Commodity View)
Table 03	Major Vegetable Oils: World Supply and Distribution (Commodity View)
Table 04	Major Oilseeds: World Supply and Distribution (Country View)
Table 05	Major Protein Meals: World Supply and Distribution (Country View)
Table 06	Major Vegetable Oils: World Supply and Distribution (Country View)

COMMODITY TABLES

Table 07	Soybeans: World Supply and Distribution
Table 08	Soybean Meal: World Supply and Distribution
Table 09	Soybean Oil: World Supply and Distribution
Table 10	Soybeans and Products: World Trade
Table 11	Palm Oil: World Supply and Distribution
Table 12	Rapeseed and Products: World Supply and Distribution
Table 13	Sunflowerseed and Products: World Supply and Distribution
Table 14	Minor Vegetable Oils: World Supply and Distribution

HISTORICAL TABLES

Table 15	World Oilseeds and Products Supply and Distribution
Table 16	World Soybeans and Products Supply and Distribution
Table 17	World Rapeseed and Products Supply and Distribution
Table 18	World Sunflowerseed and Products Supply and Distribution
Table 19	World Palm Oil, Coconut Oil, and Fish Meal Supply and Distribution

COUNTRY TABLES

Table 20	United States Oilseeds and Products Supply and Distribution Local Marketing Years
Table 21	United States Soybeans and Products Supply and Distribution Local Marketing Years
Table 22	Brazil Soybeans and Products Supply and Distribution Local Marketing Years
Table 23	Argentina Soybeans and Products Supply and Distribution Local Marketing Years
Table 24	South East Asia Oilseeds and Products Supply and Distribution
Table 25	Middle East Oilseeds and Products Supply and Distribution
Table 26	European Union Oilseeds and Products Supply and Distribution
Table 27	China Oilseeds and Products Supply and Distribution
Table 28	India Oilseeds and Products Supply and Distribution

Table 01: Major Oilseeds: World Supply and Distribution (Commodity View)

Million Metric Tons

	2020/21	2021/22	2022/23	2023/24	Jun 2024/25	Jul 2024/25
Production						
Oilseed, Copra	5.77	6.03	6.00	6.21	5.81	5.81
Oilseed, Cottonseed	41.93	41.27	42.42	41.56	43.21	43.47
Oilseed, Palm Kernel	19.09	19.16	20.06	20.72	20.72	20.73
Oilseed, Peanut	50.49	51.97	49.41	49.40	51.32	51.53
Oilseed, Rapeseed	74.75	75.83	88.75	88.76	87.07	87.88
Oilseed, Soybean	369.24	360.46	378.37	395.41	422.26	421.85
Oilseed, Sunflowerseed	48.87	56.86	52.78	55.14	55.43	54.82
Total	610.14	611.57	637.79	657.21	685.81	686.09
Imports						
Oilseed, Copra	0.08	0.10	0.08	0.09	0.09	0.09
Oilseed, Cottonseed	0.81	0.98	1.36	1.16	1.15	1.15
Oilseed, Palm Kernel	0.15	0.15	0.15	0.16	0.15	0.15
Oilseed, Peanut	4.33	4.05	4.27	4.06	4.26	4.31
Oilseed, Rapeseed	16.67	13.92	20.05	16.51	16.47	16.87
Oilseed, Soybean	166.20	154.47	167.86	172.86	176.40	176.40
Oilseed, Sunflowerseed	2.72	3.83	3.78	2.73	2.41	2.41
Total	190.95	177.50	197.55	197.56	200.93	201.38
Exports						
Oilseed, Copra	0.10	0.10	0.10	0.10	0.09	0.09
Oilseed, Cottonseed	0.96	1.27	1.07	1.43	1.48	1.48
Oilseed, Palm Kernel	0.05	0.05	0.05	0.04	0.04	0.04
Oilseed, Peanut	5.06	4.43	4.83	4.74	4.82	4.91
Oilseed, Rapeseed	18.03	15.35	19.55	17.10	16.89	17.29
Oilseed, Soybean	165.18	154.44	171.76	175.13	180.20	180.20
Oilseed, Sunflowerseed	2.95	3.95	4.02	2.89	2.58	2.58
Total	192.33	179.57	201.37	201.44	206.10	206.59
Crush						
Oilseed, Copra	5.70	5.96	5.91	5.98	5.78	5.78
Oilseed, Cottonseed	32.45	31.98	32.59	32.91	33.88	33.74
Oilseed, Palm Kernel	19.09	19.01	20.08	20.62	20.82	20.82
Oilseed, Peanut	19.68	19.83	19.15	18.67	19.28	19.28
Oilseed, Rapeseed	72.11	72.06	81.11	84.00	82.95	83.57
Oilseed, Soybean	318.24	316.66	315.44	329.18	345.78	345.68
Oilseed, Sunflowerseed	45.05	46.72	51.41	51.80	51.47	50.89
Total	512.32	512.22	525.69	543.17	559.96	559.77
Ending Stocks						
Oilseed, Copra	0.05	0.06	0.05	0.04	0.04	0.04
Oilseed, Cottonseed	1.66	1.49	1.45	1.51	1.58	1.59
Oilseed, Palm Kernel	0.19	0.33	0.29	0.32	0.28	0.31
Oilseed, Peanut	4.96	4.85	4.12	3.80	4.11	4.23
Oilseed, Rapeseed	6.23	4.60	8.48	8.46	7.50	7.76
Oilseed, Soybean	98.27	92.58	100.61	111.25	127.90	127.76
Oilseed, Sunflowerseed	2.41	7.85	4.15	2.91	2.49	2.60
Total	113.77	111.75	119.14	128.29	143.88	144.28

Totals may not add due to rounding

Table 02: Major Protein Meals: World Supply and Distribution (Commodity View)

Million Metric Tons

	2020/21	2021/22	2022/23	2023/24	Jun 2024/25	Jul 2024/25
Production						
Meal, Copra	1.90	1.97	1.96	1.98	1.92	1.92
Meal, Cottonseed	14.84	14.69	14.96	15.14	15.60	15.54
Meal, Fish	4.86	4.97	4.51	4.91	5.14	5.14
Meal, Palm Kernel	9.98	9.86	10.44	10.74	10.87	10.87
Meal, Peanut	7.85	7.91	7.64	7.47	7.71	7.71
Meal, Rapeseed	41.59	41.93	47.22	48.79	48.15	48.52
Meal, Soybean	249.89	248.26	247.83	258.30	271.24	271.16
Meal, Sunflowerseed	20.28	21.23	23.07	23.10	22.99	22.77
Total	351.20	350.81	357.63	370.42	383.62	383.63
Imports						
Meal, Copra	0.62	0.69	0.62	0.63	0.63	0.63
Meal, Cottonseed	0.29	0.27	0.19	0.24	0.21	0.21
Meal, Fish	3.41	3.59	3.35	3.41	3.62	3.62
Meal, Palm Kernel	7.14	7.34	7.74	7.73	7.77	7.77
Meal, Peanut	0.10	0.13	0.12	0.09	0.09	0.09
Meal, Rapeseed	8.37	7.67	9.29	10.02	10.13	10.04
Meal, Soybean	65.29	67.12	63.00	69.04	70.94	70.84
Meal, Sunflowerseed	7.58	7.35	8.57	9.77	9.20	9.00
Total	92.79	94.16	92.87	100.93	102.58	102.20
Exports						
Meal, Copra	0.55	0.75	0.62	0.69	0.67	0.67
Meal, Cottonseed	0.41	0.45	0.28	0.34	0.35	0.35
Meal, Fish	2.95	2.84	2.50	2.85	3.04	3.04
Meal, Palm Kernel	7.59	7.90	8.13	8.25	8.28	8.28
Meal, Peanut	0.13	0.18	0.18	0.16	0.17	0.17
Meal, Rapeseed	8.23	7.76	9.78	10.10	10.28	10.28
Meal, Soybean	69.44	68.82	67.07	72.45	74.60	74.50
Meal, Sunflowerseed	8.16	7.84	9.16	10.18	9.78	9.61
Total	97.45	96.54	97.71	105.01	107.16	106.89
Domestic Consumption						
Meal, Copra	2.00	1.90	1.96	1.92	1.88	1.88
Meal, Cottonseed	14.74	14.52	14.86	15.05	15.46	15.39
Meal, Fish	5.38	5.64	5.39	5.50	5.69	5.69
Meal, Palm Kernel	9.39	9.46	10.20	10.25	10.31	10.31
Meal, Peanut	7.83	7.85	7.59	7.40	7.64	7.64
Meal, Rapeseed	41.85	41.63	46.97	48.47	48.09	48.32
Meal, Soybean	245.96	246.08	246.79	254.43	265.65	265.63
Meal, Sunflowerseed	20.49	20.98	21.84	22.72	22.41	22.25
Total	347.63	348.06	355.60	365.72	377.12	377.11
Ending Stocks						
Meal, Copra	0.04	0.04	0.04	0.04	0.03	0.03
Meal, Cottonseed	0.11	0.10	0.11	0.10	0.11	0.11
Meal, Fish	0.19	0.27	0.23	0.21	0.23	0.23
Meal, Palm Kernel	0.83	0.67	0.52	0.50	0.61	0.54
Meal, Peanut	0.03	0.03	0.03	0.03	0.03	0.03
Meal, Rapeseed	1.28	1.49	1.25	1.49	1.52	1.46
Meal, Soybean	15.75	16.23	13.20	13.66	16.21	15.53
Meal, Sunflowerseed	1.32	1.08	1.72	1.70	1.68	1.62
Total	19.54	19.90	17.10	17.71	20.42	19.55

Totals may not add due to rounding

Table 03: Major Vegetable Oils: World Supply and Distribution (Commodity View)

Million Metric Tons

	2020/21	2021/22	2022/23	2023/24	Jun 2024/25	Jul 2024/25
Production						
Oil, Coconut	3.58	3.73	3.72	3.77	3.65	3.65
Oil, Cottonseed	4.86	4.82	4.91	4.97	5.11	5.09
Oil, Olive	2.94	3.30	2.45	2.39	2.92	2.92
Oil, Palm	73.29	73.08	77.96	79.53	79.99	80.19
Oil, Palm Kernel	8.43	8.36	8.88	9.10	9.17	9.17
Oil, Peanut	6.38	6.44	6.22	6.06	6.26	6.26
Oil, Rapeseed	29.44	29.17	32.86	34.09	33.68	33.92
Oil, Soybean	60.06	60.03	59.62	62.24	65.37	65.36
Oil, Sunflowerseed	19.01	19.69	21.73	21.88	21.74	21.49
Total	207.96	208.62	218.34	224.04	227.89	228.05
Imports						
Oil, Coconut	1.95	2.24	1.94	1.92	1.84	1.89
Oil, Cottonseed	0.10	0.12	0.08	0.08	0.08	0.08
Oil, Olive	1.21	1.28	1.09	0.94	1.00	1.02
Oil, Palm	46.86	41.60	47.12	45.65	46.62	46.82
Oil, Palm Kernel	2.93	2.55	2.68	2.77	2.89	2.90
Oil, Peanut	0.44	0.29	0.39	0.32	0.34	0.34
Oil, Rapeseed	6.33	5.13	6.89	7.66	7.33	7.33
Oil, Soybean	11.69	11.34	10.88	10.38	11.24	11.19
Oil, Sunflowerseed	9.67	9.68	12.62	12.97	11.80	11.50
Total	81.19	74.23	83.70	82.69	83.15	83.08
Exports						
Oil, Coconut	1.73	2.24	2.18	2.02	1.99	1.99
Oil, Cottonseed	0.10	0.13	0.10	0.08	0.10	0.10
Oil, Olive	1.36	1.42	1.21	1.04	1.09	1.11
Oil, Palm	48.56	43.90	49.52	47.64	48.54	48.74
Oil, Palm Kernel	3.21	2.78	2.97	3.00	3.12	3.12
Oil, Peanut	0.48	0.35	0.35	0.42	0.40	0.40
Oil, Rapeseed	6.42	5.21	6.55	7.73	7.49	7.56
Oil, Soybean	12.61	12.44	11.73	11.00	12.05	11.94
Oil, Sunflowerseed	11.34	11.22	14.33	14.45	13.38	13.09
Total	85.79	79.69	88.93	87.38	88.15	88.04
Domestic Consumption						
Oil, Coconut	3.65	3.60	3.55	3.68	3.64	3.68
Oil, Cottonseed	4.89	4.84	4.90	4.94	5.07	5.05
Oil, Olive	3.02	3.04	2.58	2.39	2.70	2.72
Oil, Palm	72.43	69.38	74.33	77.22	79.08	79.28
Oil, Palm Kernel	8.28	8.17	8.60	8.91	9.05	9.06
Oil, Peanut	6.44	6.34	6.22	6.07	6.18	6.18
Oil, Rapeseed	28.60	30.16	32.68	33.64	34.16	34.19
Oil, Soybean	58.88	59.75	58.87	61.41	64.60	64.61
Oil, Sunflowerseed	18.31	17.56	19.51	20.69	20.36	20.15
Total	204.51	202.83	211.23	218.95	224.84	224.91
Ending Stocks						
Oil, Coconut	0.79	0.91	0.85	0.85	0.74	0.72
Oil, Cottonseed	0.19	0.16	0.16	0.19	0.20	0.20
Oil, Olive	0.59	0.72	0.47	0.37	0.48	0.48
Oil, Palm	15.10	16.49	17.73	18.05	16.68	17.04
Oil, Palm Kernel	1.00	0.96	0.95	0.92	0.81	0.81
Oil, Peanut	0.30	0.34	0.38	0.26	0.32	0.29
Oil, Rapeseed	3.66	2.59	3.11	3.49	2.81	2.99
Oil, Soybean	5.92	5.10	5.01	5.21	5.25	5.21
Oil, Sunflowerseed	2.04	2.65	3.15	2.86	2.50	2.62
Total	29.59	29.91	31.80	32.20	29.80	30.37

Totals may not add due to rounding

Table 04: Major Oilseeds: World Supply and Distribution (Country View)

Million Metric Tons

	2020/21	2021/22	2022/23	2023/24	Jun 2024/25	Jul 2024/25
Production						
Brazil	144.89	135.18	166.92	158.82	175.69	175.69
United States	124.54	131.32	125.75	122.24	131.16	131.46
China	65.81	62.07	67.92	69.14	67.48	67.83
Argentina	51.25	49.88	31.45	55.57	56.76	56.76
India	39.18	43.17	42.31	41.73	43.15	43.15
Other	184.46	189.95	203.44	209.71	211.57	211.21
Total	610.14	611.57	637.79	657.21	685.81	686.09
Imports						
China	104.12	93.19	111.71	113.12	113.65	114.15
European Union	22.19	22.82	22.36	20.91	22.02	22.02
Mexico	7.82	7.20	8.13	7.93	8.23	8.23
Japan	5.70	5.78	5.49	5.56	5.51	5.51
Argentina	4.82	3.84	9.06	6.70	5.50	5.50
Thailand	4.26	3.33	3.34	3.81	4.11	4.11
Turkey	3.73	3.68	4.02	3.87	4.03	4.03
Egypt	3.68	4.61	2.01	2.84	3.34	3.34
Indonesia	3.00	2.80	2.72	2.90	3.23	3.28
Iran	2.83	1.89	2.90	2.86	3.17	3.17
Other	28.82	28.36	25.82	27.06	28.16	28.06
Total	190.95	177.50	197.55	197.56	200.93	201.38
Exports						
Brazil	82.02	79.45	95.92	103.40	105.47	105.47
United States	62.78	59.55	54.78	47.51	50.83	50.92
Canada	15.09	9.58	12.22	11.10	11.40	11.78
Ukraine	4.05	5.71	8.37	7.13	7.08	7.08
Paraguay	6.35	2.28	6.50	6.85	6.81	6.81
Argentina	6.37	3.99	5.12	6.76	6.63	6.63
Australia	4.03	6.66	6.70	5.70	5.30	5.30
Other	11.64	12.35	11.75	12.99	12.57	12.59
Total	192.33	179.57	201.37	201.44	206.10	206.59
Crush						
China	132.00	127.05	135.20	138.20	140.70	141.35
United States	62.66	63.87	64.16	66.43	70.32	70.46
Brazil	51.29	54.87	57.54	59.05	59.67	59.67
European Union	46.66	47.91	48.25	48.29	49.34	49.44
Argentina	43.67	42.79	34.59	39.74	43.70	43.70
India	32.39	32.20	34.78	35.43	35.88	35.78
Russia	18.75	21.20	24.50	25.75	26.13	25.53
Ukraine	15.40	12.50	15.68	17.40	16.35	16.15
Indonesia	13.02	12.79	13.56	13.74	13.88	13.88
Canada	12.07	10.40	11.75	12.75	13.45	13.45
Mexico	7.67	7.46	8.17	7.76	7.96	7.96
Turkey	5.25	5.34	6.03	5.05	5.49	5.49
Malaysia	4.99	4.91	5.09	5.29	5.32	5.32
Pakistan	5.48	5.60	3.85	4.57	5.05	4.85
Japan	4.68	4.79	4.63	4.50	4.54	4.54
Other	56.37	58.57	57.93	59.23	62.19	62.20
Total	512.32	512.22	525.69	543.17	559.96	559.77
Ending Stocks						
China	31.00	26.26	35.15	42.21	41.41	44.89
Brazil	29.65	27.50	37.03	29.93	36.93	36.08
Argentina	25.94	24.83	18.38	25.97	30.70	29.39
United States	8.64	9.14	8.85	11.05	14.04	13.70
European Union	2.63	3.01	3.43	3.58	3.62	3.57
Other	15.91	21.01	16.30	15.55	17.20	16.66
Total	113.77	111.75	119.14	128.29	143.88	144.28

Major Oilseeds includes Copra, Cottonseed, Palm Kernel, Peanut, Rapeseed, Soybeans and Sunflowerseeds.

Table 05: Major Protein Meals: World Supply and Distribution (Country View)

Million Metric Tons

	2020/21	2021/22	2022/23	2023/24	Jun 2024/25	Jul 2024/25
Production						
China	93.93	90.10	96.07	98.62	100.94	101.32
United States	48.22	49.23	49.94	51.37	54.25	54.32
Brazil	38.13	41.03	43.09	43.98	44.27	44.27
Argentina	32.86	32.03	25.56	29.59	32.86	32.86
European Union	30.19	30.75	30.74	30.82	31.55	31.61
Other	107.86	107.67	112.24	116.06	119.75	119.26
Total	351.20	350.81	357.63	370.42	383.62	383.63
Imports						
European Union	21.21	21.44	21.58	21.89	21.30	21.30
China	7.12	7.18	8.39	9.70	10.20	10.00
Vietnam	6.21	6.52	5.92	6.51	6.71	6.71
Indonesia	5.50	5.73	5.67	5.97	6.22	6.22
United States	4.39	3.57	4.31	4.23	4.28	4.28
Thailand	3.36	3.51	4.01	3.83	4.11	3.92
Korea, South	3.45	3.52	3.43	3.52	3.60	3.60
Other	41.56	42.69	39.56	45.28	46.16	46.17
Total	92.79	94.16	92.87	100.93	102.58	102.20
Exports						
Argentina	29.33	27.60	21.91	25.58	28.28	28.28
Brazil	16.58	20.21	21.33	21.80	20.50	20.50
United States	12.62	12.48	13.39	14.71	16.08	16.08
Canada	5.63	4.93	5.69	6.03	6.42	6.42
Indonesia	5.33	5.85	5.87	5.87	6.03	6.03
Ukraine	5.02	3.92	4.60	5.88	5.18	5.11
Russia	2.74	3.07	3.82	4.29	3.99	3.84
Other	20.20	18.50	21.10	20.86	20.69	20.65
Total	97.45	96.54	97.71	105.01	107.16	106.89
Domestic Consumption						
China	100.14	97.02	103.41	106.99	109.95	110.32
European Union	49.02	49.26	49.71	49.91	49.85	49.85
United States	39.98	40.36	40.79	40.86	42.40	42.48
Brazil	20.99	21.64	22.26	22.89	23.89	23.69
India	16.53	17.23	17.59	18.26	19.13	19.08
Russia	8.20	8.49	8.93	9.36	9.93	9.83
Mexico	7.61	7.61	7.84	7.95	8.22	8.22
Vietnam	7.45	7.55	7.25	7.76	8.20	8.20
Indonesia	6.44	6.53	6.77	6.94	7.16	7.16
Thailand	6.04	5.97	6.26	6.33	6.80	6.59
Other	85.23	86.40	84.79	88.49	91.60	91.69
Total	347.63	348.06	355.60	365.72	377.12	377.11
SME						
China	94.35	91.17	96.47	99.70	102.76	103.09
European Union	42.39	42.35	42.31	42.42	42.56	42.56
United States	38.55	39.19	39.36	39.41	40.93	40.99
Brazil	20.57	21.28	21.88	22.43	23.39	23.19
India	14.00	14.60	14.94	15.47	16.24	16.20
Russia	6.72	6.91	7.26	7.62	8.07	8.01
Mexico	7.32	7.38	7.55	7.69	7.97	7.97
Other	95.05	96.52	94.67	98.98	103.39	103.28
Total	318.95	319.40	324.43	333.73	345.32	345.30
Ending Stocks						
Argentina	2.51	3.04	2.61	2.45	2.78	2.78
Brazil	4.47	3.67	3.17	2.47	2.95	2.56
European Union	1.12	1.36	1.26	1.47	1.52	1.51
China	0.96	0.71	0.94	0.95	1.22	0.92
Indonesia	0.94	0.71	0.57	0.67	0.72	0.72
Other	9.54	10.42	8.56	9.71	11.23	11.07
Total	19.54	19.90	17.10	17.71	20.42	19.55

Major Protein Meals include Copra, Cottonseed, Fish, Palm Kernel, Peanut, Rapeseed, Soybean, and Sunflower Meal.

Table 06: Major Vegetable Oils: World Supply and Distribution (Country View)

Million Metric Tons

	2020/21	2021/22	2022/23	2023/24	Jun 2024/25	Jul 2024/25
Production						
Indonesia	49.50	47.90	52.73	53.32	53.88	53.88
China	28.35	27.56	29.30	30.06	30.20	30.45
Malaysia	19.98	20.22	20.59	21.52	21.27	21.47
European Union	17.94	18.80	18.33	18.44	19.02	19.06
United States	12.69	13.05	13.18	13.55	14.29	14.33
Brazil	10.72	11.50	11.94	12.32	12.46	12.46
India	8.32	8.74	9.27	9.40	9.62	9.58
Other	60.47	60.85	63.00	65.43	67.16	66.82
Total	207.96	208.62	218.34	224.04	227.89	228.05
Imports						
India	13.81	14.31	17.12	15.19	15.05	15.10
China	13.25	7.13	11.40	10.38	10.76	10.61
European Union	9.93	9.82	9.15	9.25	8.62	8.62
United States	4.95	5.26	6.27	6.91	7.10	7.18
Pakistan	3.59	3.08	3.92	3.77	3.99	3.99
Turkey	1.71	2.42	2.75	2.48	2.36	2.36
Bangladesh	1.96	2.03	2.29	2.18	2.25	2.25
Egypt	1.75	1.71	1.65	1.88	1.95	1.95
Iran	1.89	1.51	1.45	1.67	1.79	1.79
Malaysia	1.96	1.99	1.50	1.03	1.37	1.36
Other	26.40	24.97	26.20	27.96	27.91	27.87
Total	81.19	74.23	83.70	82.69	83.15	83.08
Exports						
Indonesia	29.45	24.27	30.25	28.14	28.75	28.75
Malaysia	17.32	16.82	16.64	17.09	17.27	17.46
Argentina	7.05	5.85	5.33	5.91	6.35	6.35
Russia	4.56	4.79	6.06	6.55	6.44	6.22
Ukraine	5.61	4.87	6.05	6.53	6.18	6.09
Canada	3.58	2.74	3.16	3.91	4.16	4.16
European Union	3.57	3.28	3.65	3.09	3.25	3.22
Other	14.65	17.09	17.79	16.16	15.76	15.80
Total	85.79	79.69	88.93	87.38	88.15	88.04
Domestic Consumption						
China	40.26	37.15	39.17	40.06	41.28	41.19
Indonesia	19.50	21.59	23.40	25.22	25.86	26.05
India	22.53	22.82	23.81	24.61	25.40	25.30
European Union	25.57	24.48	24.40	24.38	24.38	24.38
United States	16.51	17.27	19.27	20.07	20.88	20.98
Brazil	10.17	9.60	10.22	11.19	11.54	11.64
Malaysia	4.72	4.63	5.43	5.59	5.59	5.59
Pakistan	4.80	4.62	4.85	4.87	5.15	5.10
Russia	3.62	3.70	3.78	3.85	3.94	3.94
Thailand	3.13	2.97	3.08	3.25	3.40	3.37
Bangladesh	3.13	3.11	3.13	3.10	3.30	3.22
Mexico	2.94	3.05	3.11	3.15	3.20	3.20
Argentina	2.67	3.29	2.75	2.96	3.07	3.07
Turkey	2.42	2.51	2.66	2.77	2.84	2.89
Nigeria	2.46	2.56	2.65	2.76	2.88	2.88
Other	40.08	39.50	39.52	41.13	42.15	42.14
Total	204.51	202.83	211.23	218.95	224.84	224.91
Ending Stocks						
Indonesia	5.76	7.93	7.07	7.15	6.08	6.36
India	1.90	2.02	4.42	4.19	3.32	3.42
China	4.27	1.65	3.01	3.23	2.98	2.94
European Union	1.92	2.78	2.22	2.44	2.41	2.53
Malaysia	2.09	2.84	2.87	2.74	2.52	2.52
Other	13.66	12.70	12.21	12.45	12.50	12.61
Total	29.59	29.91	31.80	32.20	29.80	30.37

Major Vegetable Oils includes Coconut, Cottonseed, Olive, Palm, Palm Kernel, Peanut, Rapeseed, Soybean, and Sunflowerseed oil.

Table 07: Soybeans: World Supply and Distribution

Thousand Metric Tons

	2020/21	2021/22	2022/23	2023/24	Jun 2024/25	Jul 2024/25
Production						
Brazil	139,500	130,500	162,000	153,000	169,000	169,000
United States	114,749	121,504	116,221	113,344	121,109	120,701
Argentina	46,200	43,900	25,000	49,500	51,000	51,000
China	19,602	16,395	20,284	20,840	20,700	20,700
India	10,456	11,889	12,411	11,875	12,200	12,200
Paraguay	9,642	4,183	10,050	10,500	10,700	10,700
Canada	6,359	6,224	6,543	6,981	6,700	6,900
Other	22,730	25,866	25,862	29,371	30,853	30,653
Total	369,238	360,461	378,371	395,411	422,262	421,854
Imports						
China	99,740	90,297	104,500	108,000	109,000	109,000
European Union	14,786	14,544	13,143	13,800	14,300	14,300
Mexico	6,101	5,956	6,442	6,400	6,700	6,700
Argentina	4,816	3,839	9,059	6,700	5,500	5,500
Thailand	4,157	3,243	3,238	3,700	4,000	4,000
Japan	3,085	3,455	3,332	3,300	3,350	3,350
Egypt	3,607	4,566	1,992	2,800	3,300	3,300
Turkey	2,745	2,949	2,888	3,100	3,300	3,300
Iran	2,777	1,817	2,803	2,800	3,100	3,100
Taiwan	2,615	2,622	2,559	2,750	2,850	2,850
Other	21,770	21,177	17,904	19,513	20,997	20,997
Total	166,199	154,465	167,860	172,863	176,397	176,397
Exports						
Brazil	81,650	79,063	95,504	103,000	105,000	105,000
United States	61,664	58,570	53,874	46,266	49,668	49,668
Paraguay	6,330	2,273	6,495	6,850	6,800	6,800
Argentina	5,195	2,861	4,185	5,600	5,500	5,500
Canada	4,554	4,289	4,239	4,650	4,300	4,300
Other	5,783	7,379	7,460	8,767	8,932	8,932
Total	165,176	154,435	171,757	175,133	180,200	180,200
Crush						
China	95,000	90,000	96,000	99,000	103,000	103,000
United States	58,257	59,980	60,199	62,324	65,998	65,998
Brazil	46,675	50,767	53,409	54,000	54,000	54,000
Argentina	40,162	38,825	30,318	35,500	40,000	40,000
European Union	15,800	15,400	14,300	14,500	15,200	15,200
India	10,000	8,500	10,300	11,100	11,000	11,000
Mexico	6,200	6,350	6,650	6,480	6,650	6,650
Russia	4,500	4,900	5,400	5,900	6,000	5,900
Paraguay	3,325	2,200	3,450	3,500	3,500	3,500
Egypt	3,700	4,500	2,200	2,725	3,300	3,300
Iran	2,400	2,500	3,000	2,900	3,200	3,200
Bolivia	3,050	3,100	3,500	2,800	3,000	3,000
Thailand	2,800	2,500	2,100	2,550	2,750	2,750
Japan	2,300	2,640	2,600	2,425	2,560	2,560
Taiwan	2,050	2,075	1,950	2,100	2,200	2,200
Other	22,024	22,426	20,064	21,371	23,426	23,426
Total	318,243	316,663	315,440	329,175	345,784	345,684
Ending Stocks						
China	28,856	25,146	32,340	39,380	39,180	42,180
Brazil	29,419	27,378	36,819	29,719	36,619	35,769
Argentina	24,838	23,691	16,997	24,847	29,547	28,247
United States	6,994	7,468	7,190	9,402	12,384	11,849
European Union	1,455	1,446	1,098	1,358	1,488	1,388
Other	6,708	7,453	6,168	6,544	8,678	8,329
Total	98,270	92,582	100,612	111,250	127,896	127,762

Most countries are on an October/September Marketing Year (MY). The United States, Mexico, and Thailand are on a September/August MY. Canada is on an August/July MY. Paraguay is on a Jan/Dec MY.

Table 08: Soybean Meal: World Supply and Distribution

Thousand Metric Tons

	2020/21	2021/22	2022/23	2023/24	Jun 2024/25	Jul 2024/25
Production						
China	75,240	71,280	76,032	78,408	81,576	81,576
United States	45,872	47,005	47,621	48,992	51,778	51,778
Brazil	35,940	39,091	41,125	41,580	41,580	41,580
Argentina	31,318	30,287	23,648	27,690	31,200	31,200
European Union	12,482	12,166	11,297	11,455	12,008	12,008
India	8,000	6,800	8,240	8,880	8,800	8,800
Mexico	4,900	5,020	5,255	5,120	5,255	5,255
Other	36,140	36,609	34,608	36,179	39,046	38,967
Total	249,892	248,258	247,826	258,304	271,243	271,164
Imports						
European Union	16,504	16,536	16,012	16,100	16,200	16,200
Indonesia	5,356	5,535	5,434	5,750	6,000	6,000
Vietnam	5,200	5,531	4,800	5,400	5,700	5,700
Philippines	2,839	2,895	2,826	3,025	3,150	3,150
Thailand	2,687	3,077	3,141	3,000	3,250	3,150
Mexico	1,854	1,827	1,668	2,075	2,200	2,200
United Kingdom	2,214	2,015	1,762	2,000	2,100	2,100
Ecuador	1,597	1,775	1,600	1,850	2,050	2,050
Colombia	1,607	1,831	1,603	1,900	2,000	2,000
Japan	1,839	1,699	1,540	1,825	1,750	1,750
Other	23,597	24,403	22,615	26,111	26,537	26,542
Total	65,294	67,124	63,001	69,036	70,937	70,842
Exports						
Argentina	28,325	26,589	20,751	24,400	27,300	27,300
Brazil	16,577	20,207	21,334	21,800	20,500	20,500
United States	12,406	12,303	13,196	14,515	15,876	15,876
Paraguay	1,916	1,270	1,992	2,100	2,050	2,000
Bolivia	2,117	2,153	2,151	1,900	1,900	1,900
Other	8,096	6,298	7,642	7,737	6,970	6,925
Total	69,437	68,820	67,066	72,452	74,596	74,501
Domestic Consumption						
China	74,425	71,100	75,050	77,150	80,450	80,650
United States	34,179	35,323	34,946	35,040	36,401	36,401
European Union	28,342	27,742	26,742	26,742	27,242	27,242
Brazil	18,800	19,700	20,300	20,500	21,200	21,000
India	5,850	6,273	6,625	7,190	7,625	7,625
Mexico	6,725	6,875	6,930	7,150	7,425	7,425
Vietnam	6,130	6,235	5,785	6,290	6,845	6,845
Indonesia	5,200	5,550	5,580	5,700	5,950	5,950
Thailand	4,745	4,900	4,750	4,850	5,270	5,150
Iran	3,750	3,500	3,550	4,500	4,050	4,250
Russia	3,475	3,500	3,650	3,900	4,100	4,100
Japan	3,615	3,610	3,550	3,610	3,665	3,685
Argentina	3,275	3,325	3,450	3,475	3,550	3,550
Egypt	3,500	3,700	2,700	2,750	3,300	3,250
Philippines	2,875	2,950	2,950	3,050	3,200	3,200
Other	41,069	41,793	40,234	42,535	45,377	45,307
Total	245,955	246,076	246,792	254,432	265,650	265,630
Ending Stocks						
Brazil	4,460	3,656	3,153	2,453	2,933	2,543
Argentina	2,289	2,797	2,311	2,136	2,496	2,496
China	958	710	937	945	1,221	921
European Union	462	658	485	598	680	664
Iran	438	274	278	569	447	447
Other	7,140	8,138	6,038	6,957	8,433	8,462
Total	15,747	16,233	13,202	13,658	16,210	15,533

Most countries are on an October/September Marketing Year (MY). The Mexico and Thailand are on a September/August MY. Canada is on an August/July MY. Paraguay, Vietnam and the Philippines are on a January/December MY and Bolivia is on a March/February MY.

Table 09: Soybean Oil: World Supply and Distribution

Thousand Metric Tons

	2020/21	2021/22	2022/23	2023/24	Jun 2024/25	Jul 2024/25
Production						
China	17,024	16,128	17,203	17,741	18,458	18,458
United States	11,350	11,864	11,897	12,227	12,934	12,934
Brazil	9,335	10,153	10,579	10,800	10,800	10,800
Argentina	7,932	7,664	5,991	7,011	7,900	7,900
European Union	3,002	2,926	2,717	2,755	2,888	2,888
India	1,800	1,530	1,854	1,998	1,980	1,980
Mexico	1,145	1,171	1,227	1,196	1,227	1,227
Other	8,472	8,597	8,147	8,507	9,187	9,169
Total	60,060	60,033	59,615	62,235	65,374	65,356
Imports						
India	3,251	4,231	3,968	2,950	3,500	3,500
Bangladesh	676	689	681	575	650	650
Peru	594	471	535	575	590	590
Morocco	507	529	525	550	560	560
European Union	493	459	623	500	525	525
Algeria	610	460	490	500	450	450
China	1,221	291	395	400	400	400
Iran	473	375	395	275	375	375
Korea, South	407	392	353	400	350	350
Colombia	285	317	242	350	345	345
Other	3,175	3,127	2,675	3,301	3,497	3,447
Total	11,692	11,341	10,882	10,376	11,242	11,192
Exports						
Argentina	6,137	4,873	4,137	4,800	5,500	5,500
Brazil	1,262	2,409	2,686	1,400	1,400	1,400
European Union	1,065	970	922	750	1,050	950
Russia	561	665	750	760	750	730
Paraguay	562	371	523	640	580	580
Bolivia	525	523	620	430	480	480
Turkey	264	289	289	300	330	330
Other	2,232	2,337	1,801	1,919	1,956	1,966
Total	12,608	12,437	11,728	10,999	12,046	11,936
Domestic Consumption						
China	17,800	17,100	17,000	18,100	18,800	18,800
United States	10,574	11,262	12,070	12,248	12,791	12,791
Brazil	8,150	7,725	8,375	9,150	9,425	9,525
India	4,950	5,825	5,400	5,150	5,600	5,600
European Union	2,430	2,305	2,405	2,455	2,480	2,480
Argentina	2,045	2,650	2,060	2,250	2,360	2,360
Mexico	1,290	1,300	1,305	1,320	1,360	1,360
Bangladesh	1,205	1,100	985	935	1,045	1,015
Iran	850	850	900	850	940	940
Algeria	800	750	750	750	780	780
Egypt	1,010	960	560	570	710	695
Peru	535	555	540	550	575	575
Korea, South	580	590	545	540	535	545
Morocco	510	525	525	535	540	540
Japan	458	533	525	480	505	505
Other	5,694	5,721	4,920	5,525	6,157	6,097
Total	58,881	59,751	58,865	61,408	64,603	64,608
Ending Stocks						
United States	967	903	729	731	829	806
China	1,180	387	874	815	973	773
Brazil	894	945	492	807	597	722
European Union	440	550	563	613	522	596
Argentina	292	526	320	281	321	321
Other	2,143	1,791	2,028	1,963	2,004	1,996
Total	5,916	5,102	5,006	5,210	5,246	5,214

Most countries are on an October/September Marketing Year (MY). Mexico is on a September/August MY. Paraguay and Peru are on an January/December MY and Bolivia is on a March/February MY.

Table 10: Soybeans and Products: World Trade
Thousand Metric Tons

Marketing Year	Meal, Soybean			Oil, Soybean			Oilseed, Soybean			
	2022/23	2023/24	2024/25	2022/23	2023/24	2024/25	2022/23	2023/24	2024/25	
Exports										
North America	13,576	14,841	16,092	346	474	477	58,114	50,924	53,970	
South America	46,240	50,207	51,707	8,034	7,335	8,010	107,435	118,405	120,255	
South Asia	1,897	1,551	1,201	11	15	30	22	50	50	
India (Oct-Sep)	1,871	1,550	1,200	11	15	15	22	50	50	
Other	5,353	5,853	5,501	3,337	3,175	3,419	6,186	5,754	5,925	
World Total	67,066	72,452	74,501	11,728	10,999	11,936	171,757	175,133	180,200	
Imports										
European Union (Oct-Sep)	16,012	16,100	16,200	623	500	525	13,143	13,800	14,300	
East Asia	3,115	3,595	3,595	855	925	895	111,733	115,255	116,630	
China (Oct-Sep)	40	50	50	395	400	400	104,500	108,000	109,000	
Japan (Oct-Sep)	1,540	1,825	1,750	7	10	10	3,332	3,300	3,350	
Korea, South (Oct-Sep)	1,492	1,650	1,695	353	400	350	1,337	1,200	1,425	
Taiwan (Oct-Sep)	43	70	100	0	0	0	2,559	2,750	2,850	
Southeast Asia	18,217	19,220	20,200	267	251	255	8,282	9,182	10,052	
Indonesia (Oct-Sep)	5,434	5,750	6,000	31	36	40	2,308	2,400	2,650	
Malaysia (Oct-Sep)	1,346	1,325	1,425	88	90	90	684	750	750	
Philippines (Jan-Dec)	2,826	3,025	3,150	60	60	60	160	190	210	
Thailand (Sep-Aug)	3,141	3,000	3,150	0	0	0	3,238	3,700	4,000	
Vietnam (Jan-Dec)	4,800	5,400	5,700	75	50	50	1,858	2,100	2,400	
North America	3,450	3,965	4,144	414	822	634	7,609	7,294	7,508	
Canada (Aug-Jul)	1,207	1,300	1,400	147	375	240	500	350	400	
United States (Oct-Sep)	575	590	544	170	272	204	667	544	408	
Canada (Aug-Jul)	1,207	1,300	1,400	147	375	240	500	350	400	
Mexico (Sep-Aug)	1,668	2,075	2,200	97	175	190	6,442	6,400	6,700	
South America	6,622	7,380	7,895	1,223	1,474	1,478	10,095	8,510	6,825	
Argentina (Oct-Sep)	67	10	10	0	0	0	9,059	6,700	5,500	
Brazil (Oct-Sep)	6	20	10	29	65	40	154	750	150	
Paraguay (Jan-Dec)	5	0	0	1	2	1	10	20	20	
Brazil (Oct-Sep)	6	20	10	29	65	40	154	750	150	
Colombia (Oct-Sep)	1,603	1,900	2,000	242	350	345	444	575	640	
Central America	1,608	1,855	1,860	166	218	250	313	332	377	
Caribbean	742	810	840	192	241	266	31	55	55	
Middle East	5,221	7,390	6,910	515	436	546	6,668	7,181	7,731	
Iran (Oct-Sep)	1,185	2,500	1,600	395	275	375	2,803	2,800	3,100	
Israel (Oct-Sep)	308	325	350	10	20	20	297	330	360	
Syria (Jan-Dec)	69	80	90	1	1	1	1	1	1	
Turkey (Oct-Sep)	1,400	1,425	1,650	2	0	0	2,888	3,100	3,300	
North Africa	2,161	1,915	1,985	1,278	1,225	1,250	3,964	5,050	5,800	
Egypt (Oct-Sep)	866	625	750	198	100	150	1,992	2,800	3,300	
Other Europe	2,255	2,540	2,652	170	189	211	1,437	1,447	1,547	
United Kingdom (Oct-Sep)	1,762	2,000	2,100	159	175	200	910	925	950	
Other	3,598	4,266	4,561	5,179	4,095	4,882	4,585	4,757	5,572	
World Total	63,001	69,036	70,842	10,882	10,376	11,192	167,860	172,863	176,397	

Table 11: Palm Oil: World Supply and Distribution

Thousand Metric Tons

	2020/21	2021/22	2022/23	2023/24	Jun 2024/25	Jul 2024/25
Production						
Indonesia	43,500	42,000	46,500	47,000	47,500	47,500
Malaysia	17,854	18,152	18,389	19,250	19,000	19,200
Thailand	2,963	3,376	3,328	3,280	3,360	3,360
Colombia	1,628	1,762	1,800	1,900	1,950	1,950
Nigeria	1,275	1,400	1,400	1,500	1,500	1,500
Other	6,067	6,385	6,545	6,604	6,684	6,684
Total	73,287	73,075	77,962	79,534	79,994	80,194
Imports						
India	8,411	8,004	10,045	9,000	9,200	9,400
China	6,818	4,387	6,190	5,400	6,000	6,000
European Union	5,951	5,015	4,548	4,400	4,200	4,200
Pakistan	3,500	2,824	3,685	3,600	3,700	3,700
United States	1,576	1,588	1,888	1,900	1,900	1,900
Bangladesh	1,285	1,339	1,610	1,600	1,600	1,600
Egypt	1,127	1,154	1,052	1,175	1,200	1,200
Vietnam	933	995	1,050	1,100	1,100	1,100
Kenya	839	789	848	1,000	1,075	1,075
Philippines	1,192	1,177	892	1,100	1,000	1,000
Other	15,230	14,323	15,316	15,373	15,647	15,647
Total	46,862	41,595	47,124	45,648	46,622	46,822
Exports						
Indonesia	27,321	22,321	28,077	26,000	26,600	26,600
Malaysia	15,878	15,527	15,355	15,800	15,900	16,100
Guatemala	776	792	883	900	945	945
Papua New Guinea	745	834	813	800	820	820
Colombia	454	449	425	625	625	625
Other	3,382	3,978	3,969	3,516	3,649	3,649
Total	48,556	43,901	49,522	47,641	48,539	48,739
Domestic Consumption						
Indonesia	15,700	17,430	19,190	20,900	21,460	21,660
India	9,225	8,150	8,900	9,350	9,850	10,000
China	6,550	5,100	5,600	5,600	5,900	5,800
European Union	6,360	4,850	4,400	4,210	4,100	4,100
Malaysia	3,242	3,300	3,971	4,040	4,045	4,045
Pakistan	3,470	3,145	3,595	3,620	3,735	3,715
Thailand	2,485	2,335	2,585	2,685	2,785	2,770
Nigeria	1,650	1,715	1,790	1,865	1,950	1,950
United States	1,598	1,561	1,876	1,882	1,890	1,890
Colombia	1,220	1,380	1,487	1,545	1,565	1,565
Bangladesh	1,430	1,470	1,600	1,600	1,595	1,545
Egypt	1,175	1,175	1,060	1,160	1,170	1,170
Philippines	1,255	1,270	1,020	1,110	1,120	1,120
Vietnam	950	927	947	1,007	1,025	1,025
Mexico	725	760	820	860	880	880
Other	15,395	14,810	15,486	15,790	16,011	16,046
Total	72,430	69,378	74,327	77,224	79,081	79,281
Ending Stocks						
Indonesia	5,055	7,304	6,537	6,637	5,577	5,877
Malaysia	1,756	2,318	2,316	2,276	2,131	2,131
India	843	972	2,419	2,371	2,023	2,073
China	1,149	420	981	751	921	921
Colombia	734	836	826	741	681	681
Other	5,565	4,643	4,651	5,271	5,350	5,360
Total	15,102	16,493	17,730	18,047	16,683	17,043

Table 12: Rapeseed and Products: World Supply and Distribution
Thousand Metric Tons

Marketing Year	Meal, Rapeseed			Oil, Rapeseed			Oilseed, Rapeseed			
	2022/23	2023/24	2024/25	2022/23	2023/24	2024/25	2022/23	2023/24	2024/25	
Production										
China	(Oct-Sep)	10,917	11,448	11,035	7,215	7,566	7,293	15,531	16,321	15,600
India	(Oct-Sep)	6,015	6,219	6,368	3,840	3,975	4,070	11,200	11,600	12,100
Canada	(Aug-Jul)	5,810	6,333	6,793	4,151	4,670	5,007	18,695	18,800	20,000
Japan	(Oct-Sep)	1,146	1,174	1,112	853	875	839	4	4	4
European Union	(Jul-Jun)	13,794	13,908	13,794	10,164	10,248	10,164	19,613	20,000	18,900
Other		9,541	9,704	9,422	6,636	6,758	6,549	23,709	22,039	21,278
World Total		47,223	48,786	48,524	32,859	34,092	33,922	88,752	88,764	87,882
Imports										
China	(Oct-Sep)	2,030	2,800	2,900	1,998	2,150	1,700	5,335	3,700	3,700
India	(Oct-Sep)	2	10	2	6	5	5	0	0	0
Canada	(Aug-Jul)	6	10	10	26	20	20	151	300	100
Japan	(Oct-Sep)	20	5	10	13	20	15	1,976	2,050	1,950
European Union	(Jul-Jun)	843	950	700	402	425	300	6,841	5,500	6,300
Other		6,388	6,240	6,420	4,447	5,037	5,294	5,742	4,957	4,820
World Total		9,289	10,015	10,042	6,892	7,657	7,334	20,045	16,507	16,870
Exports										
China	(Oct-Sep)	24	10	10	4	5	5	0	0	0
India	(Oct-Sep)	1,920	1,600	1,500	11	10	10	0	0	0
Canada	(Aug-Jul)	5,308	5,700	6,200	3,017	3,750	4,000	7,951	6,400	7,450
Japan	(Oct-Sep)	0	0	0	5	5	5	0	0	0
European Union	(Jul-Jun)	795	780	750	671	725	650	549	550	500
Other		1,730	2,009	1,815	2,840	3,238	2,891	11,053	10,150	9,338
World Total		9,777	10,099	10,275	6,548	7,733	7,561	19,553	17,100	17,288
Domestic Consumption										
China	(Oct-Sep)	12,923	14,238	13,925	8,900	9,200	9,400	19,125	20,100	19,400
India	(Oct-Sep)	4,350	4,550	4,875	3,680	3,980	4,080	11,300	11,650	12,025
Canada	(Aug-Jul)	525	600	605	1,055	1,050	1,070	10,717	12,000	12,900
Japan	(Oct-Sep)	1,168	1,178	1,125	890	880	860	2,005	2,055	1,955
European Union	(Jul-Jun)	13,800	14,000	13,800	9,925	9,900	9,850	24,850	25,050	24,850
Other		14,208	13,899	13,987	8,227	8,634	8,926	17,367	17,330	17,037
World Total		46,974	48,465	48,317	32,677	33,644	34,186	85,364	88,185	88,167
Ending Stocks										
China	(Oct-Sep)	0	0	0	1,150	1,661	1,249	2,609	2,530	2,430
India	(Oct-Sep)	197	276	271	402	392	377	619	569	644
Canada	(Aug-Jul)	134	177	175	630	520	477	1,506	2,206	1,956
Japan	(Oct-Sep)	16	17	14	17	27	16	182	181	180
European Union	(Jul-Jun)	429	507	451	343	391	355	1,822	1,722	1,572
Other		476	512	552	571	494	520	1,739	1,255	978
World Total		1,252	1,489	1,463	3,113	3,485	2,994	8,477	8,463	7,760

Table 13: Sunflowerseed and Products: World Supply and Distribution
Thousand Metric Tons

Marketing Year	Oilseed, Sunflowerseed			Meal, Sunflowerseed			Oil, Sunflowerseed			
	2022/23	2023/24	2024/25	2022/23	2023/24	2024/25	2022/23	2023/24	2024/25	
Production										
Argentina	(Mar-Feb)	5,019	4,100	3,800	1,789	1,713	1,469	1,752	1,675	1,436
Russia	(Sep-Aug)	16,254	17,100	16,500	6,453	6,780	6,657	6,484	6,815	6,691
Turkey	(Sep-Aug)	1,900	1,550	1,675	1,334	1,035	1,035	1,066	827	827
Ukraine	(Sep-Aug)	12,200	14,500	14,500	5,782	6,071	5,823	6,020	6,321	6,064
European Union	(Oct-Sep)	9,385	10,000	10,900	5,135	4,973	5,297	4,014	3,887	4,141
Other		8,021	7,893	7,441	2,577	2,530	2,492	2,389	2,357	2,334
World Total		52,779	55,143	54,816	23,070	23,102	22,773	21,725	21,882	21,493
Imports										
Argentina	(Mar-Feb)	1	0	0	0	0	0	0	0	0
Russia	(Sep-Aug)	75	50	50	5	5	5	1	1	1
Turkey	(Sep-Aug)	941	600	550	879	1,150	950	1,711	1,475	1,300
Ukraine	(Sep-Aug)	31	30	30	13	10	10	1	0	0
European Union	(Oct-Sep)	1,460	700	500	2,756	2,900	2,500	2,103	2,450	2,100
Other		1,271	1,347	1,281	4,913	5,707	5,538	8,806	9,047	8,103
World Total		3,779	2,727	2,411	8,566	9,772	9,003	12,622	12,973	11,504
Exports										
Argentina	(Mar-Feb)	94	180	150	1,128	1,150	950	1,115	1,000	750
Russia	(Sep-Aug)	260	450	350	2,250	2,650	2,350	4,000	4,400	4,150
Turkey	(Sep-Aug)	102	100	125	78	15	20	1,102	1,175	600
Ukraine	(Sep-Aug)	1,856	325	260	3,973	4,750	4,425	5,683	5,800	5,630
European Union	(Oct-Sep)	595	450	450	1,001	900	1,150	1,221	900	850
Other		1,110	1,380	1,243	725	717	711	1,213	1,177	1,111
World Total		4,017	2,885	2,578	9,155	10,182	9,606	14,334	14,452	13,091
Domestic Consumption										
Argentina	(Mar-Feb)	4,553	4,225	3,650	600	550	550	652	672	672
Russia	(Sep-Aug)	16,180	16,980	16,520	3,900	4,125	4,350	2,425	2,525	2,575
Turkey	(Sep-Aug)	2,672	2,102	2,102	2,025	2,175	2,025	1,290	1,515	1,540
Ukraine	(Sep-Aug)	14,175	14,875	14,275	1,700	1,350	1,400	405	420	430
European Union	(Oct-Sep)	10,535	10,235	10,855	6,860	6,960	6,610	5,213	5,413	5,263
Other		8,127	7,800	7,566	6,750	7,557	7,314	9,525	10,142	9,670
World Total		56,242	56,217	54,968	21,835	22,717	22,249	19,510	20,687	20,150
Ending Stocks										
Argentina	(Mar-Feb)	1,084	779	779	292	305	274	329	332	346
Russia	(Sep-Aug)	907	627	307	397	407	369	346	237	204
Turkey	(Sep-Aug)	168	116	114	223	218	158	611	223	210
Ukraine	(Sep-Aug)	845	175	170	247	228	236	27	128	132
European Union	(Oct-Sep)	406	421	516	320	333	370	328	352	480
Other		736	796	709	242	205	210	1,507	1,592	1,248
World Total		4,146	2,914	2,595	1,721	1,696	1,617	3,148	2,864	2,620

Table 14: Minor Vegetable Oils: World Supply and Distribution
Thousand Metric Tons

Marketing Year	Oil, Peanut			Oil, Cottonseed			Oil, Olive			
	2022/23	2023/24	2024/25	2022/23	2023/24	2024/25	2022/23	2023/24	2024/25	
Production										
China	(Oct-Sep)	3,136	3,136	3,104	1,484	1,353	1,353	8	8	8
India	(Oct-Sep)	1,221	1,123	1,256	1,369	1,355	1,326	nr	nr	nr
Turkey	(Nov-Oct)	7	7	7	290	191	238	380	190	350
United States	(Aug-Jul)	120	96	131	166	170	195	9	12	10
European Union	(Oct-Sep)	13	13	13	33	23	31	1,392	1,515	1,825
Other		1,722	1,683	1,751	1,566	1,878	1,944	657	665	727
World Total		6,219	6,058	6,262	4,908	4,970	5,087	2,446	2,390	2,920
Imports										
China	(Oct-Sep)	292	225	225	0	0	0	35	30	30
India	(Oct-Sep)	0	0	0	1	3	5	nr	nr	nr
Turkey	(Nov-Oct)	0	0	0	1	2	2	65	40	40
United States	(Aug-Jul)	28	16	27	7	2	2	371	370	410
European Union	(Oct-Sep)	44	52	55	2	5	5	193	175	185
Other		28	29	29	72	66	63	425	325	354
World Total		392	322	336	83	78	77	1,089	940	1,019
Exports										
China	(Oct-Sep)	10	10	10	7	5	5	0	0	0
India	(Oct-Sep)	125	150	100	0	0	0	nr	nr	nr
Turkey	(Nov-Oct)	0	0	0	8	5	5	187	140	180
United States	(Aug-Jul)	6	6	11	32	11	23	6	10	10
European Union	(Oct-Sep)	6	6	6	1	1	1	659	545	600
Other		199	250	270	53	55	63	355	343	324
World Total		346	422	397	101	77	97	1,207	1,038	1,114
Domestic Consumption										
China	(Oct-Sep)	3,418	3,351	3,319	1,477	1,348	1,348	43	38	38
India	(Oct-Sep)	1,060	1,050	1,125	1,361	1,345	1,350	nr	nr	nr
Turkey	(Nov-Oct)	7	7	7	280	190	230	190	150	170
United States	(Aug-Jul)	141	111	147	141	161	174	374	372	410
European Union	(Oct-Sep)	53	57	62	34	27	35	1,165	1,115	1,360
Other		1,545	1,498	1,515	1,604	1,869	1,914	805	712	740
World Total		6,224	6,074	6,175	4,897	4,940	5,051	2,577	2,387	2,718
Ending Stocks										
China	(Oct-Sep)	0	0	0	0	0	0	0	0	0
India	(Oct-Sep)	264	187	218	37	50	31	nr	nr	nr
Turkey	(Nov-Oct)	0	0	0	16	14	19	81	21	61
United States	(Aug-Jul)	16	11	11	23	23	23	0	0	0
European Union	(Oct-Sep)	3	5	5	0	0	0	213	243	293
Other		95	59	54	79	99	129	172	107	124
World Total		378	262	288	155	186	202	466	371	478

Table 15: World Oilseeds and Products Supply and Distribution

Million Metric Tons

	Area Harvested	Beginning Stocks	Production	Imports	Total Supply	Exports	Food Use Dom.	Domestic Consumpti	Ending Stocks
Major Oilseeds									
2011/12	249.06	89.04	447.11	113.33	649.47	111.07	36.10	466.12	72.28
2012/13	257.80	72.28	475.41	114.72	662.42	118.26	36.48	472.01	72.16
2013/14	261.65	72.16	503.83	133.89	709.87	133.97	37.36	494.77	81.13
2014/15	268.08	81.13	540.05	143.67	764.85	147.52	38.85	521.40	95.93
2015/16	265.77	95.93	524.95	154.46	775.33	153.93	40.15	527.86	93.55
2016/17	270.63	93.63	577.27	167.65	838.55	171.61	41.58	556.30	110.65
2017/18	281.94	110.65	583.82	176.53	871.00	177.49	43.03	574.93	118.58
2018/19	282.94	118.58	601.50	168.04	888.12	172.08	43.77	582.05	133.99
2019/20	281.34	133.99	582.11	189.86	905.96	191.67	45.23	602.10	112.19
2020/21	287.98	112.19	610.14	190.95	913.29	192.33	46.66	607.18	113.77
2021/22	296.68	113.77	611.57	177.50	902.84	179.57	47.94	611.52	111.75
2022/23	304.20	111.75	637.79	197.55	947.08	201.37	49.10	626.57	119.14
2023/24	307.78	119.14	657.21	197.56	973.90	201.44	50.37	644.17	128.29
2024/25	312.23	128.29	686.09	201.38	1,015.77	206.59	51.90	664.90	144.28
Major Protein Meals									
2011/12	nr	13.07	267.49	79.41	359.96	81.13	0.40	263.90	14.94
2012/13	nr	14.94	269.43	75.26	359.62	79.48	0.43	266.56	13.59
2013/14	nr	13.59	282.59	80.97	377.15	83.54	0.44	278.41	15.20
2014/15	nr	15.20	300.78	82.94	398.92	86.61	0.45	293.96	18.35
2015/16	nr	18.35	305.94	84.15	408.44	87.39	0.47	302.74	18.30
2016/17	nr	18.65	320.74	85.55	424.94	89.73	0.52	316.04	19.18
2017/18	nr	19.18	331.36	87.35	437.88	90.99	0.54	326.09	20.80
2018/19	nr	20.80	333.21	90.29	444.30	95.29	0.61	329.40	19.61
2019/20	nr	19.61	346.52	91.75	457.88	96.06	0.70	341.18	20.64
2020/21	nr	20.64	351.20	92.79	464.62	97.45	0.77	347.63	19.54
2021/22	nr	19.54	350.81	94.16	464.51	96.54	0.81	348.06	19.90
2022/23	nr	19.90	357.63	92.87	470.41	97.71	0.81	355.60	17.10
2023/24	nr	17.10	370.42	100.93	488.45	105.01	0.87	365.72	17.71
2024/25	nr	17.71	383.63	102.20	503.55	106.89	0.90	377.11	19.55
Major Vegetable Oils									
2011/12	18.52	20.11	157.85	61.32	239.28	64.73	115.37	151.08	23.47
2012/13	19.23	23.47	161.22	64.77	249.46	68.27	120.24	157.66	23.53
2013/14	20.12	23.53	171.57	66.65	261.75	70.12	125.15	165.91	25.71
2014/15	20.96	25.71	177.48	70.17	273.37	76.55	130.30	169.79	27.03
2015/16	22.06	27.03	176.35	70.43	273.81	73.84	134.66	176.94	23.03
2016/17	23.18	23.03	189.14	76.19	288.36	82.01	138.43	182.41	23.94
2017/18	24.14	23.94	198.75	76.13	298.81	80.99	142.31	190.93	26.89
2018/19	24.60	26.89	204.42	82.09	313.40	86.88	145.44	197.99	28.54
2019/20	25.04	28.54	207.99	82.80	319.33	87.17	148.58	201.42	30.74
2020/21	25.36	30.74	207.96	81.19	319.89	85.79	151.09	204.51	29.59
2021/22	25.93	29.59	208.62	74.23	312.44	79.69	149.47	202.83	29.91
2022/23	27.04	29.91	218.34	83.70	331.96	88.93	152.89	211.23	31.80
2023/24	27.67	31.80	224.04	82.69	338.52	87.38	156.83	218.95	32.20
2024/25	27.90	32.20	228.05	83.08	343.32	88.04	161.07	224.91	30.37

Based on the aggregate of different marketing years

Table 16: World Soybeans and Products Supply and Distribution

Million Metric Tons

	Area Harvested	Beginning Stocks	Production	Imports	Total Supply	Exports	Crush	Domestic Consumpti	Ending Stocks
Oilseed, Soybean									
2011/12	103.04	73.51	241.19	94.66	409.36	91.83	229.39	259.47	58.06
2012/13	110.39	58.06	268.97	97.13	424.16	100.41	232.12	265.43	58.33
2013/14	113.22	58.33	283.38	113.28	454.98	112.80	243.28	278.33	63.86
2014/15	119.20	63.86	321.51	124.36	509.73	126.44	265.35	303.98	79.31
2015/16	120.91	79.31	316.14	134.04	529.49	132.84	275.83	316.96	79.69
2016/17	120.59	79.71	350.88	145.00	575.59	147.74	288.46	332.23	95.63
2017/18	125.27	95.63	343.82	154.17	593.62	153.40	295.76	340.39	99.83
2018/19	126.08	99.83	363.51	145.92	609.26	149.22	299.30	345.78	114.26
2019/20	123.57	114.26	341.43	165.30	621.00	165.82	312.51	360.03	95.14
2020/21	129.74	95.14	369.24	166.20	630.58	165.18	318.24	367.13	98.27
2021/22	131.47	98.27	360.46	154.47	613.20	154.44	316.66	366.18	92.58
2022/23	136.90	92.58	378.37	167.86	638.81	171.76	315.44	366.44	100.61
2023/24	139.52	100.61	395.41	172.86	668.89	175.13	329.18	382.50	111.25
2024/25	143.35	111.25	421.85	176.40	709.50	180.20	345.68	401.54	127.76
Meal, Soybean									
2011/12	nr	9.43	181.01	57.21	247.65	58.73	229.39	177.90	11.03
2012/13	nr	11.03	182.38	54.57	247.98	58.50	232.22	178.81	10.67
2013/14	nr	10.67	190.66	58.49	259.83	60.86	243.38	187.24	11.73
2014/15	nr	11.73	208.74	61.40	281.87	64.64	265.36	202.59	14.65
2015/16	nr	14.65	216.43	63.35	294.42	65.85	275.84	213.84	14.73
2016/17	nr	14.90	226.38	61.72	303.00	65.41	288.47	222.40	15.19
2017/18	nr	15.19	232.93	62.89	311.02	65.80	295.76	229.03	16.19
2018/19	nr	16.19	234.21	63.55	313.94	68.06	299.30	230.71	15.18
2019/20	nr	15.18	245.28	63.98	324.44	67.94	312.51	240.54	15.95
2020/21	nr	15.95	249.89	65.29	331.14	69.44	318.25	245.96	15.75
2021/22	nr	15.75	248.26	67.12	331.13	68.82	316.67	246.08	16.23
2022/23	nr	16.23	247.83	63.00	327.06	67.07	315.44	246.79	13.20
2023/24	nr	13.20	258.30	69.04	340.54	72.45	329.18	254.43	13.66
2024/25	nr	13.66	271.16	70.84	355.66	74.50	345.69	265.63	15.53
Oil, Soybean									
2011/12	nr	4.56	42.87	8.02	55.44	8.55	229.39	42.43	4.47
2012/13	nr	4.47	43.41	8.53	56.40	9.36	232.21	42.59	4.45
2013/14	nr	4.45	45.32	9.35	59.13	9.43	243.38	45.47	4.23
2014/15	nr	4.23	49.38	10.18	63.79	11.19	265.35	47.83	4.77
2015/16	nr	4.77	51.65	11.74	68.16	11.83	275.83	52.13	4.19
2016/17	nr	4.21	53.95	11.22	69.38	11.45	288.46	53.55	4.38
2017/18	nr	4.38	55.31	10.05	69.74	10.78	295.76	54.41	4.55
2018/19	nr	4.55	56.49	10.93	71.96	11.48	299.30	55.65	4.84
2019/20	nr	4.84	58.87	11.61	75.31	12.38	312.51	57.28	5.65
2020/21	nr	5.65	60.06	11.69	77.41	12.61	318.24	58.88	5.92
2021/22	nr	5.92	60.03	11.34	77.29	12.44	316.66	59.75	5.10
2022/23	nr	5.10	59.62	10.88	75.60	11.73	315.44	58.87	5.01
2023/24	nr	5.01	62.24	10.38	77.62	11.00	329.18	61.41	5.21
2024/25	nr	5.21	65.36	11.19	81.76	11.94	345.68	64.61	5.21

Based on the aggregate of different marketing years, primarily October through September.

Table 17: World Rapeseed and Products Supply and Distribution

Million Metric Tons

	Area Harvested	Beginning Stocks	Production	Imports	Total Supply	Exports	Food Use Dom.	Domestic Consumpti	Ending Stocks
Oilseed, Rapeseed									
2011/12	33.55	8.71	61.55	13.24	83.51	12.99	0.46	63.73	6.79
2012/13	36.07	6.79	63.67	12.83	83.29	12.57	0.48	65.20	5.52
2013/14	36.07	5.52	71.11	15.55	92.18	15.10	0.50	69.28	7.80
2014/15	35.43	7.80	70.99	14.32	93.11	15.11	0.56	70.63	7.37
2015/16	33.75	7.37	69.40	14.13	90.90	14.40	0.66	70.14	6.37
2016/17	33.80	6.42	70.17	15.80	92.38	16.15	0.66	70.93	5.31
2017/18	36.17	5.31	75.80	15.73	96.83	16.60	0.66	72.10	8.14
2018/19	36.23	8.14	73.49	14.64	96.27	14.70	0.17	71.88	9.69
2019/20	35.14	9.69	70.33	15.82	95.84	16.00	0.27	72.27	7.56
2020/21	35.34	7.56	74.75	16.67	98.98	18.03	0.37	74.71	6.23
2021/22	38.46	6.23	75.83	13.92	95.99	15.35	0.67	76.05	4.60
2022/23	41.95	4.60	88.75	20.05	113.39	19.55	0.67	85.36	8.48
2023/24	43.04	8.48	88.76	16.51	113.75	17.10	0.67	88.19	8.46
2024/25	42.21	8.46	87.88	16.87	113.22	17.29	0.75	88.17	7.76
Meal, Rapeseed									
2011/12	nr	1.05	35.11	5.57	41.73	5.56	0.00	35.05	1.11
2012/13	nr	1.11	36.10	5.63	42.84	5.70	0.00	36.24	0.90
2013/14	nr	0.90	38.54	6.51	45.95	6.36	0.00	38.69	0.90
2014/15	nr	0.90	38.99	6.01	45.90	6.07	0.00	38.86	0.97
2015/16	nr	0.97	38.84	5.71	45.52	5.70	0.00	38.67	1.15
2016/17	nr	1.33	39.10	6.19	46.61	6.26	0.00	38.96	1.40
2017/18	nr	1.40	39.66	6.51	47.57	6.68	0.00	39.43	1.46
2018/19	nr	1.46	39.57	7.17	48.20	7.22	0.00	39.74	1.25
2019/20	nr	1.25	39.83	8.01	49.09	7.72	0.00	39.97	1.40
2020/21	nr	1.40	41.59	8.37	51.36	8.23	0.00	41.85	1.28
2021/22	nr	1.28	41.93	7.67	50.88	7.76	0.00	41.63	1.49
2022/23	nr	1.49	47.22	9.29	58.00	9.78	0.00	46.97	1.25
2023/24	nr	1.25	48.79	10.02	60.05	10.10	0.00	48.47	1.49
2024/25	nr	1.49	48.52	10.04	60.06	10.28	0.00	48.32	1.46
Oil, Rapeseed									
2011/12	nr	2.28	24.87	4.08	31.23	3.98	16.55	23.92	3.34
2012/13	nr	3.34	25.50	3.94	32.78	3.95	16.61	23.87	4.95
2013/14	nr	4.95	27.20	3.82	35.97	3.83	17.95	25.86	6.28
2014/15	nr	6.28	27.62	3.95	37.85	4.07	18.94	27.11	6.68
2015/16	nr	6.68	27.56	4.13	38.37	4.17	20.13	28.49	5.71
2016/17	nr	5.66	27.81	4.56	38.02	4.64	20.56	29.14	4.25
2017/18	nr	4.25	28.32	4.84	37.41	4.83	20.58	29.18	3.40
2018/19	nr	3.40	28.03	5.18	36.61	5.26	20.30	28.38	2.96
2019/20	nr	2.96	28.36	5.80	37.12	5.87	20.23	28.34	2.91
2020/21	nr	2.91	29.44	6.33	38.68	6.42	20.46	28.60	3.66
2021/22	nr	3.66	29.17	5.13	37.96	5.21	22.02	30.16	2.59
2022/23	nr	2.59	32.86	6.89	42.34	6.55	23.48	32.68	3.11
2023/24	nr	3.11	34.09	7.66	44.86	7.73	23.87	33.64	3.49
2024/25	nr	3.49	33.92	7.33	44.74	7.56	24.18	34.19	2.99

Based on the aggregate of different marketing years.

Table 18: World Sunflower and Products Supply and Distribution

Million Metric Tons

	Area Harvested	Beginning Stocks	Production	Imports	Exports	Food Use Dom.	Domestic Consumpti	Ending Stocks
Oilseed, Sunflowerseed								
2011/12	24.65	2.26	38.74	1.74	1.93	1.77	38.28	2.54
2012/13	23.58	2.54	34.93	1.36	1.47	1.76	34.59	2.77
2013/14	24.01	2.77	41.57	1.73	2.01	1.91	40.76	3.31
2014/15	23.09	3.31	39.25	1.63	1.68	2.01	39.55	2.95
2015/16	23.46	2.95	40.70	2.11	2.13	2.05	40.70	2.93
2016/17	25.95	2.93	48.35	2.46	2.68	2.06	47.39	3.66
2017/18	25.93	3.66	47.92	2.38	2.75	2.09	48.11	3.10
2018/19	25.66	3.10	50.33	2.89	3.19	2.07	50.34	2.79
2019/20	25.83	2.79	53.91	3.35	3.60	2.09	53.45	3.00
2020/21	26.77	3.00	48.87	2.72	2.95	2.08	49.23	2.41
2021/22	28.54	2.41	56.86	3.83	3.95	2.08	51.31	7.85
2022/23	28.30	7.85	52.78	3.78	4.02	2.12	56.24	4.15
2023/24	27.70	4.15	55.14	2.73	2.89	2.10	56.22	2.91
2024/25	27.89	2.91	54.82	2.41	2.58	1.92	54.97	2.60
Meal, Sunflowerseed								
2011/12	nr	1.08	15.62	6.44	6.81	0.00	14.67	1.67
2012/13	nr	1.67	14.14	4.96	5.14	0.00	14.88	0.75
2013/14	nr	0.75	16.84	5.81	6.23	0.00	15.78	1.39
2014/15	nr	1.39	16.17	5.56	5.87	0.00	15.73	1.52
2015/16	nr	1.52	16.54	5.99	6.24	0.00	16.39	1.42
2016/17	nr	1.42	19.50	7.12	7.61	0.00	18.96	1.47
2017/18	nr	1.47	20.00	6.81	7.16	0.00	19.34	1.78
2018/19	nr	1.78	20.98	8.11	8.18	0.00	20.69	2.00
2019/20	nr	2.00	21.83	8.56	8.85	0.00	21.44	2.11
2020/21	nr	2.11	20.28	7.58	8.16	0.00	20.49	1.32
2021/22	nr	1.32	21.23	7.35	7.84	0.00	20.98	1.08
2022/23	nr	1.08	23.07	8.57	9.16	0.00	21.84	1.72
2023/24	nr	1.72	23.10	9.77	10.18	0.00	22.72	1.70
2024/25	nr	1.70	22.77	9.00	9.61	0.00	22.25	1.62
Oil, Sunflowerseed								
2011/12	nr	1.94	14.37	5.89	6.52	11.89	12.62	3.05
2012/13	nr	3.05	12.85	5.09	5.55	12.40	13.20	2.24
2013/14	nr	2.24	15.65	7.05	7.78	13.41	14.22	2.94
2014/15	nr	2.94	14.97	6.33	7.41	13.43	14.24	2.59
2015/16	nr	2.59	15.40	7.32	8.21	14.16	15.07	2.04
2016/17	nr	2.12	18.30	9.31	10.75	15.41	16.37	2.62
2017/18	nr	2.62	18.57	9.15	10.32	16.42	17.40	2.61
2018/19	nr	2.61	19.62	9.73	11.51	16.99	18.00	2.44
2019/20	nr	2.44	21.21	11.75	13.49	17.89	18.90	3.01
2020/21	nr	3.01	19.01	9.67	11.34	17.28	18.31	2.04
2021/22	nr	2.04	19.69	9.68	11.22	16.46	17.56	2.65
2022/23	nr	2.65	21.73	12.62	14.33	18.35	19.51	3.15
2023/24	nr	3.15	21.88	12.97	14.45	19.51	20.69	2.86
2024/25	nr	2.86	21.49	11.50	13.09	18.98	20.15	2.62

Based on the aggregate of different marketing years, primarily September through August.

Table 19: World Palm Oil, Coconut Oil, and Fish Meal Supply and Distribution

Million Metric Tons

	Beginning Stocks	Production	Imports	Total Supply	Exports	Industrial Dom.	Food Use Dom.	Domestic Consumpti	Ending Stocks
Oil, Palm									
2011/12	8.49	52.31	37.84	98.65	39.73	12.46	36.24	49.35	9.57
2012/13	9.57	56.34	41.39	107.30	43.00	14.67	39.51	54.82	9.48
2013/14	9.48	59.20	41.16	109.84	43.09	16.21	40.27	57.11	9.63
2014/15	9.63	62.09	43.86	115.58	47.33	14.35	42.42	57.40	10.85
2015/16	10.85	58.75	41.79	111.38	43.79	16.41	41.85	58.95	8.63
2016/17	8.58	65.57	45.63	119.79	48.94	16.72	43.06	60.44	10.41
2017/18	10.41	70.51	46.02	126.94	48.66	19.85	44.74	65.28	13.00
2018/19	13.00	74.17	49.89	137.05	51.49	22.72	47.15	70.56	15.00
2019/20	15.00	73.11	47.04	135.15	48.36	23.10	47.04	70.85	15.94
2020/21	15.94	73.29	46.86	136.09	48.56	23.51	48.22	72.43	15.10
2021/22	15.10	73.08	41.60	129.77	43.90	22.88	45.84	69.38	16.49
2022/23	16.49	77.96	47.12	141.58	49.52	25.39	48.27	74.33	17.73
2023/24	17.73	79.53	45.65	142.91	47.64	26.80	49.80	77.22	18.05
2024/25	18.05	80.19	46.82	145.06	48.74	27.43	51.26	79.28	17.04
Oil, Coconut									
2011/12	0.75	3.27	1.83	5.85	1.86	1.48	1.86	3.37	0.62
2012/13	0.62	3.48	1.89	5.99	1.93	1.62	1.90	3.56	0.50
2013/14	0.50	3.37	1.74	5.61	1.91	1.51	1.72	3.27	0.43
2014/15	0.43	3.31	1.82	5.56	1.94	1.44	1.70	3.18	0.44
2015/16	0.44	3.20	1.61	5.25	1.58	1.47	1.60	3.10	0.58
2016/17	0.57	3.38	1.54	5.49	1.79	1.55	1.63	3.21	0.50
2017/18	0.50	3.69	1.75	5.94	1.76	1.65	1.74	3.42	0.76
2018/19	0.76	3.79	1.86	6.40	2.14	1.70	1.80	3.54	0.73
2019/20	0.73	3.61	1.84	6.18	1.88	1.75	1.87	3.65	0.64
2020/21	0.64	3.58	1.95	6.17	1.73	1.70	1.92	3.65	0.79
2021/22	0.79	3.73	2.24	6.76	2.24	1.63	1.93	3.60	0.91
2022/23	0.91	3.72	1.94	6.58	2.18	1.63	1.88	3.55	0.85
2023/24	0.85	3.77	1.92	6.55	2.02	1.75	1.90	3.68	0.85
2024/25	0.85	3.65	1.89	6.39	1.99	1.75	1.90	3.68	0.72
Meal, Fish									
2011/12	0.69	4.71	3.05	8.44	2.80	0.05	0.00	5.36	0.28
2012/13	0.28	4.84	2.47	7.59	2.32	0.05	0.00	4.81	0.46
2013/14	0.46	4.45	2.73	7.64	2.47	0.05	0.00	4.94	0.23
2014/15	0.23	4.69	2.51	7.42	2.28	0.05	0.00	4.87	0.27
2015/16	0.27	4.51	2.44	7.21	2.21	0.05	0.00	4.73	0.27
2016/17	0.27	4.88	3.06	8.21	2.59	0.05	0.00	5.37	0.25
2017/18	0.25	4.80	3.05	8.10	2.69	0.05	0.00	5.17	0.25
2018/19	0.25	4.77	3.08	8.10	2.65	0.05	0.00	5.20	0.24
2019/20	0.24	4.65	3.09	7.98	2.67	0.08	0.00	5.05	0.26
2020/21	0.26	4.86	3.41	8.52	2.95	0.06	0.00	5.38	0.19
2021/22	0.19	4.97	3.59	8.75	2.84	0.07	0.00	5.64	0.27
2022/23	0.27	4.51	3.35	8.12	2.50	0.07	0.00	5.39	0.23
2023/24	0.23	4.91	3.41	8.55	2.85	0.08	0.00	5.50	0.21
2024/25	0.21	5.14	3.62	8.97	3.04	0.08	0.00	5.69	0.23

Based on the aggregate of different marketing years.

Table 20: United States Oilseeds and Products Supply and Distribution Local Marketing Year

Thousand Metric Tons

	Area Harvested	Beginning Stocks	Production	Imports	Total Supply	Exports	Crush	Domestic Consumpti	Ending Stocks
Major Oilseeds									
2011/12	35,131	7,319	92,442	1,285	101,046	37,813	50,316	57,621	5,612
2012/13	36,676	5,612	93,323	1,605	100,540	37,156	50,250	57,621	5,763
2013/14	35,428	5,763	98,986	3,067	107,816	45,569	51,455	58,294	3,953
2014/15	38,991	3,953	116,050	1,851	121,854	51,109	55,108	63,989	6,756
2015/16	38,403	6,756	115,891	1,130	123,777	53,968	55,055	62,940	6,869
2016/17	39,247	6,869	126,942	1,502	135,313	60,084	56,257	65,628	9,601
2017/18	42,801	9,601	131,483	1,419	142,503	59,315	60,168	69,361	13,827
2018/19	41,317	13,827	130,709	1,116	145,652	48,861	61,034	69,815	26,976
2019/20	36,811	26,976	106,951	1,216	135,143	47,067	63,037	71,737	16,339
2020/21	38,809	16,339	124,544	1,205	142,088	62,781	62,655	70,668	8,639
2021/22	41,048	8,639	131,322	1,182	141,143	59,552	63,869	72,449	9,142
2022/23	39,909	9,142	125,753	1,524	136,419	54,784	64,161	72,785	8,850
2023/24	38,027	8,850	122,244	1,091	132,185	47,513	66,427	73,620	11,052
2024/25	40,520	11,052	131,460	986	143,498	50,921	70,463	78,877	13,700
Major Protein Meals									
2011/12	nr	378	39,450	3,032	42,860	9,170	50,316	33,354	336
2012/13	nr	336	38,593	3,393	42,322	10,460	50,250	31,548	314
2013/14	nr	314	39,291	3,798	43,403	10,803	51,455	32,308	292
2014/15	nr	292	43,210	3,873	47,375	12,144	55,108	34,941	290
2015/16	nr	290	42,773	4,070	47,133	11,178	55,055	35,680	275
2016/17	nr	275	43,117	3,920	47,312	10,826	56,257	36,078	408
2017/18	nr	408	47,063	3,736	51,207	13,005	60,168	37,639	563
2018/19	nr	563	46,532	3,935	51,030	12,447	61,034	38,161	422
2019/20	nr	422	48,770	4,121	53,313	12,826	63,037	40,101	386
2020/21	nr	386	48,224	4,385	52,995	12,623	62,655	39,981	391
2021/22	nr	391	49,229	3,570	53,190	12,479	63,869	40,358	353
2022/23	nr	353	49,939	4,308	54,600	13,392	64,161	40,794	414
2023/24	nr	414	51,366	4,233	56,013	14,714	66,427	40,855	444
2024/25	nr	444	54,323	4,284	59,051	16,077	70,463	42,479	495
Major Vegetable Oils									
2011/12	0	1,723	10,032	3,831	15,586	1,146	50,316	12,873	1,567
2012/13	0	1,567	10,231	3,801	15,599	1,387	50,250	13,068	1,144
2013/14	0	1,144	10,425	4,016	15,585	1,116	51,455	13,498	971
2014/15	0	971	10,938	4,230	16,139	1,174	55,108	13,679	1,286
2015/16	0	1,286	11,210	4,527	17,023	1,248	55,055	14,541	1,234
2016/17	0	1,234	11,433	4,731	17,398	1,416	56,257	14,712	1,270
2017/18	0	1,270	12,107	4,783	18,160	1,342	60,168	15,531	1,287
2018/19	0	1,287	12,188	4,702	18,177	1,092	61,034	15,892	1,193
2019/20	0	1,193	12,632	4,901	18,726	1,504	63,037	16,014	1,208
2020/21	0	1,208	12,692	4,950	18,850	1,042	62,655	16,509	1,299
2021/22	0	1,299	13,053	5,263	19,615	1,048	63,869	17,271	1,296
2022/23	0	1,296	13,179	6,266	20,741	335	64,161	19,272	1,134
2023/24	0	1,134	13,547	6,914	21,595	406	66,427	20,069	1,120
2024/25	0	1,120	14,328	7,182	22,630	438	70,463	20,981	1,211

Based on the aggregate of different marketing years

Table 21: United States Soybeans and Products Supply and Distribution (Sep-Aug)

Thousand Metric Tons

	Area Harvested	Beginning Stocks	Production	Imports	Total Supply	Exports	Crush	Domestic Consumpti	Ending Stocks
Oilseed, Soybean									
2011/12	29,856	5,852	84,291	439	90,582	37,186	46,348	48,786	4,610
2012/13	30,814	4,610	82,791	1,103	88,504	36,129	45,967	48,550	3,825
2013/14	30,850	3,825	91,363	1,953	97,141	44,594	47,192	50,043	2,504
2014/15	33,431	2,504	106,905	904	110,313	50,136	50,975	54,989	5,188
2015/16	33,080	5,188	106,869	641	112,698	52,869	51,335	54,475	5,354
2016/17	33,470	5,354	116,931	606	122,891	58,964	51,742	55,719	8,208
2017/18	36,236	8,208	120,065	594	128,867	58,071	55,926	58,873	11,923
2018/19	35,448	11,923	120,515	383	132,821	47,721	56,935	59,924	25,176
2019/20	30,318	25,176	96,644	419	122,239	45,800	58,910	61,782	14,657
2020/21	33,428	14,657	114,749	539	129,945	61,664	58,257	61,287	6,994
2021/22	34,921	6,994	121,504	433	128,931	58,570	59,980	62,893	7,468
2022/23	34,873	7,468	116,221	667	124,356	53,874	60,199	63,292	7,190
2023/24	33,328	7,190	113,344	544	121,078	46,266	62,324	65,410	9,402
2024/25	34,504	9,402	120,701	408	130,511	49,668	65,998	68,994	11,849
Meal, Soybean									
2011/12	nr	318	37,217	196	37,731	8,845	46,348	28,614	272
2012/13	nr	272	36,174	222	36,668	10,111	45,967	26,308	249
2013/14	nr	249	36,909	347	37,505	10,504	47,192	26,774	227
2014/15	nr	227	40,880	302	41,409	11,891	50,975	29,282	236
2015/16	nr	236	40,525	358	41,119	10,843	51,335	30,037	239
2016/17	nr	239	40,630	313	41,182	10,505	51,742	30,314	363
2017/18	nr	363	44,657	438	45,458	12,717	55,926	32,237	504
2018/19	nr	504	44,283	620	45,407	12,141	56,935	32,901	365
2019/20	nr	365	46,358	580	47,303	12,549	58,910	34,444	310
2020/21	nr	310	45,872	712	46,894	12,406	58,257	34,179	309
2021/22	nr	309	47,005	594	47,908	12,303	59,980	35,323	282
2022/23	nr	282	47,621	575	48,478	13,196	60,199	34,946	336
2023/24	nr	336	48,992	590	49,918	14,515	62,324	35,040	363
2024/25	nr	363	51,778	544	52,685	15,876	65,998	36,401	408
Oil, Soybean									
2011/12	nr	1,213	8,954	68	10,235	664	46,348	8,396	1,175
2012/13	nr	1,175	8,990	89	10,254	981	45,967	8,522	751
2013/14	nr	751	9,131	75	9,957	852	47,192	8,577	528
2014/15	nr	528	9,706	120	10,354	914	50,975	8,599	841
2015/16	nr	841	9,956	130	10,927	1,017	51,335	9,145	765
2016/17	nr	765	10,035	145	10,945	1,159	51,742	9,010	776
2017/18	nr	776	10,783	152	11,711	1,108	55,926	9,698	905
2018/19	nr	905	10,976	180	12,061	880	56,935	10,376	805
2019/20	nr	805	11,299	145	12,249	1,287	58,910	10,122	840
2020/21	nr	840	11,350	137	12,327	786	58,257	10,574	967
2021/22	nr	967	11,864	137	12,968	803	59,980	11,262	903
2022/23	nr	903	11,897	170	12,970	171	60,199	12,070	729
2023/24	nr	729	12,227	272	13,228	249	62,324	12,248	731
2024/25	nr	731	12,934	204	13,869	272	65,998	12,791	806

Data based on Local Marketing Year (MY). Soybeans are on a September/August MY, and Soybean Meal and Oil are on an October/September MY.

Table 22: Brazil Soybeans and Products Supply and Distribution Local Marketing Years (Jan-Dec)

Thousand Metric Tons

	Area Harvested	Beginning Stocks	Production	Imports	Total Supply	Exports	Crush	Domestic Consumpti	Ending Stocks
Oilseed, Soybean (Local)									
2011/12	25,000	13,044	66,500	268	79,812	32,906	36,434	38,834	8,072
2012/13	27,700	8,072	82,000	282	90,354	42,796	36,237	38,612	8,946
2013/14	30,100	8,946	86,200	579	95,725	45,692	37,622	40,172	9,861
2014/15	32,100	9,861	97,100	324	107,285	54,324	40,556	43,206	9,755
2015/16	33,300	9,755	95,700	382	105,837	51,582	39,531	42,206	12,049
2016/17	33,900	12,049	114,900	254	127,203	68,155	41,837	44,737	14,311
2017/18	35,150	14,311	123,400	187	137,898	83,258	43,556	46,756	7,884
2018/19	35,900	7,884	120,500	144	128,528	74,073	43,454	46,369	8,086
2019/20	36,900	8,086	128,500	822	137,408	82,973	46,845	49,995	4,440
2020/21	39,500	4,440	139,500	864	144,804	86,110	47,781	51,081	7,613
2021/22	41,500	7,613	130,500	419	138,532	78,730	50,932	54,177	5,625
2022/23	44,600	5,625	162,000	181	167,806	101,870	54,165	57,965	7,971
2023/24	45,800	7,971	153,000	725	161,696	97,000	54,000	57,750	6,946
2024/25	47,300	6,946	169,000	150	176,096	109,000	54,500	58,500	8,596
Meal, Soybean (Local)									
2011/12	nr	2,711	28,054	19	30,784	14,289	36,434	13,900	2,595
2012/13	nr	2,595	27,902	33	30,530	13,334	36,237	14,500	2,696
2013/14	nr	2,696	28,969	26	31,691	13,716	37,622	15,300	2,675
2014/15	nr	2,675	31,228	17	33,920	14,827	40,556	15,700	3,393
2015/16	nr	3,393	30,439	27	33,859	14,445	39,531	16,450	2,964
2016/17	nr	2,964	32,214	36	35,214	14,179	41,837	17,000	4,035
2017/18	nr	4,035	33,538	13	37,586	16,673	43,556	17,311	3,602
2018/19	nr	3,602	33,460	23	37,085	16,682	43,454	17,645	2,758
2019/20	nr	2,758	36,071	12	38,841	16,938	46,845	18,200	3,703
2020/21	nr	3,703	36,791	18	40,512	17,149	47,781	19,000	4,363
2021/22	nr	4,363	39,218	6	43,587	20,353	50,932	19,700	3,534
2022/23	nr	3,534	41,707	8	45,249	22,474	54,165	20,300	2,475
2023/24	nr	2,475	41,580	20	44,075	20,800	54,000	20,500	2,775
2024/25	nr	2,775	41,965	10	44,750	20,500	54,500	21,000	3,250
Oil, Soybean (Local)									
2011/12	nr	433	6,922	1	7,356	1,756	36,434	5,300	300
2012/13	nr	300	6,885	5	7,190	1,362	36,237	5,530	298
2013/14	nr	298	7,148	0	7,446	1,305	37,622	5,750	391
2014/15	nr	391	7,706	25	8,122	1,670	40,556	6,200	252
2015/16	nr	252	7,511	66	7,829	1,254	39,531	6,300	275
2016/17	nr	275	7,949	58	8,282	1,343	41,837	6,700	239
2017/18	nr	239	8,493	35	8,767	1,415	43,556	7,100	252
2018/19	nr	252	8,474	48	8,774	1,041	43,454	7,500	233
2019/20	nr	233	9,135	199	9,567	1,110	46,845	7,850	607
2020/21	nr	607	9,556	107	10,270	1,651	47,781	8,150	469
2021/22	nr	469	10,186	24	10,679	2,597	50,932	7,725	357
2022/23	nr	357	10,833	21	11,211	2,333	54,165	8,375	503
2023/24	nr	503	10,800	65	11,368	1,500	54,000	9,150	718
2024/25	nr	718	10,900	25	11,643	1,500	54,500	9,525	618

Data based on Brazil's local February/January Marketing Year (MY). Where February 2012 - January 2013 is the 2011/12 MY.

Table 23: Argentina Soybeans and Products Supply and Distribution Local Marketing Years (Apr-Mar)

Thousand Metric Tons

	Area Harvested	Beginning Stocks	Production	Imports	Total Supply	Exports	Crush	Domestic Consumpti	Ending Stocks
Oilseed, Soybean (Local)									
2011/12	17,577	2,106	40,100	2	42,208	6,098	30,681	33,431	2,679
2012/13	19,750	2,679	49,300	2	51,981	7,817	35,009	40,009	4,155
2013/14	19,250	4,155	53,400	2	57,557	7,434	38,503	43,503	6,620
2014/15	19,350	6,620	61,450	141	68,211	11,670	45,110	50,360	6,181
2015/16	19,350	6,181	58,800	1,304	66,285	9,046	43,042	49,242	7,997
2016/17	17,335	7,997	55,000	2,600	65,597	7,247	40,940	47,440	10,910
2017/18	16,300	10,910	37,800	7,256	55,966	3,842	36,359	43,055	9,069
2018/19	16,600	9,069	55,300	3,789	68,158	10,256	41,188	48,088	9,814
2019/20	16,700	9,814	48,800	4,939	63,553	6,662	37,870	45,120	11,771
2020/21	16,470	11,771	46,200	4,438	62,409	5,377	41,043	48,393	8,639
2021/22	15,900	8,639	43,900	4,571	57,110	5,552	35,900	43,100	8,458
2022/23	15,000	8,458	25,000	10,395	43,853	1,891	28,997	35,247	6,715
2023/24	16,500	6,715	49,500	5,100	61,315	5,300	39,000	46,250	9,765
2024/25	16,900	9,765	51,000	5,500	66,265	6,000	41,000	48,600	11,665
Meal, Soybean (Local)									
2011/12	nr	2,875	23,946	0	26,821	21,973	30,681	1,550	3,298
2012/13	nr	3,298	27,150	0	30,448	23,937	35,009	1,950	4,561
2013/14	nr	4,561	29,528	0	34,089	27,473	38,503	2,200	4,416
2014/15	nr	4,416	34,737	1	39,154	31,873	45,110	2,524	4,757
2015/16	nr	4,757	33,350	0	38,107	30,981	43,042	2,759	4,367
2016/17	nr	4,367	31,750	0	36,117	29,255	40,940	2,930	3,932
2017/18	nr	3,932	28,270	1	32,203	25,849	36,359	3,084	3,270
2018/19	nr	3,270	32,000	27	35,297	29,285	41,188	3,175	2,837
2019/20	nr	2,837	29,539	1	32,377	26,584	37,870	3,217	2,576
2020/21	nr	2,576	32,050	1	34,627	28,652	41,043	3,300	2,675
2021/22	nr	2,675	28,002	194	30,871	24,849	35,900	3,325	2,697
2022/23	nr	2,697	22,612	8	25,317	19,115	28,997	3,400	2,802
2023/24	nr	2,802	30,420	1	33,223	26,800	39,000	3,550	2,873
2024/25	nr	2,873	31,980	1	34,854	28,200	41,000	3,700	2,954
Oil, Soybean (Local)									
2011/12	nr	391	5,840	35	6,266	3,433	30,681	2,550	283
2012/13	nr	283	6,616	59	6,958	4,281	35,009	2,375	302
2013/14	nr	302	7,191	26	7,519	4,296	38,503	2,843	380
2014/15	nr	380	8,753	5	9,138	6,312	45,110	2,308	518
2015/16	nr	518	8,382	0	8,900	5,386	43,042	3,055	459
2016/17	nr	459	7,925	0	8,384	4,721	40,940	3,290	373
2017/18	nr	373	7,150	1	7,524	4,566	36,359	2,610	348
2018/19	nr	348	8,044	0	8,392	5,113	41,188	2,625	654
2019/20	nr	654	7,460	0	8,114	6,150	37,870	1,790	174
2020/21	nr	174	8,102	15	8,291	5,480	41,043	2,195	616
2021/22	nr	616	7,079	78	7,773	4,575	35,900	2,750	448
2022/23	nr	448	5,726	0	6,174	4,178	28,997	1,760	236
2023/24	nr	236	7,703	10	7,949	5,150	39,000	2,550	249
2024/25	nr	249	8,098	10	8,357	5,400	41,000	2,660	297

Data based on Argentina's Local April/March Marketing Year (MY). Where April 2012 - March 2013 is the 2011/12 MY.

Table 24: South East Asia Oilseeds and Products Supply and Distribution

Thousand Metric Tons

	2020/21	2021/22	2022/23	2023/24	Jun 2024/25	Jul 2024/25
Production						
Oilseed, Copra	4,455	4,667	4,667	4,977	4,567	4,567
Oilseed, Palm Kernel	16,624	16,508	17,378	17,810	17,800	17,810
Oilseed, Soybean	726	666	621	598	575	575
Other	3,533	3,563	3,679	3,653	3,660	3,660
Total	25,338	25,404	26,345	27,038	26,602	26,612
Domestic Consumption						
Meal, Fish	843	856	864	860	870	870
Meal, Palm Kernel	2,052	1,820	2,157	2,205	2,109	2,109
Meal, Soybean	21,318	21,975	21,433	22,273	23,758	23,598
Other	2,174	1,945	2,508	2,378	2,376	2,291
Total	26,387	26,596	26,962	27,716	29,113	28,868
SME						
Meal, Fish	1,218	1,237	1,248	1,243	1,257	1,257
Meal, Palm Kernel	730	647	767	784	750	750
Meal, Soybean	21,238	21,890	21,348	22,183	23,663	23,503
Other	1,427	1,303	1,677	1,590	1,610	1,550
Total	24,613	25,077	25,041	25,801	27,280	27,060
Imports						
Meal, Fish	329	342	365	340	370	370
Meal, Palm Kernel	900	809	988	1,025	919	919
Meal, Soybean	18,057	19,010	18,217	19,220	20,325	20,200
Other	681	542	966	873	881	796
Total	19,967	20,703	20,536	21,458	22,495	22,285
Industrial Dom. Cons.						
Oil, Palm	13,212	14,281	16,335	17,975	18,565	18,565
Oil, Rapeseed	0	0	0	0	0	0
Oil, Soybean	54	54	54	54	54	54
Oil, Sunflowerseed	0	0	0	0	0	0
Other	4,969	5,083	5,275	5,597	5,647	5,647
Total	18,235	19,418	21,664	23,626	24,266	24,266
Food Use Dom. Cons.						
Oil, Palm	11,030	11,460	11,770	12,205	12,322	12,507
Oil, Rapeseed	13	14	16	16	15	15
Oil, Soybean	795	731	542	605	669	649
Oil, Sunflowerseed	158	143	143	146	146	146
Other	1,653	1,649	1,685	1,687	1,757	1,747
Total	13,649	13,997	14,156	14,659	14,909	15,064
Domestic Consumption						
Oil, Palm	24,627	26,130	28,553	30,597	31,307	31,492
Oil, Rapeseed	13	14	16	16	15	15
Oil, Soybean	849	785	596	659	723	703
Oil, Sunflowerseed	158	143	143	146	146	146
Other	6,632	6,742	6,970	7,294	7,414	7,404
Total	32,279	33,814	36,278	38,712	39,605	39,760
Imports						
Oil, Palm	4,459	4,221	3,761	3,802	3,872	3,872
Oil, Rapeseed	12	13	16	14	14	14
Oil, Soybean	295	236	267	251	265	255
Oil, Sunflowerseed	27	12	12	15	15	15
Other	708	840	556	570	643	643
Total	5,501	5,322	4,612	4,652	4,809	4,799

Southeast Asia includes Brunei, Burma, Cambodia, Indonesia, Laos, Malaysia, Philippines, Singapore, Thailand, and Vietnam. SME - 44 Percent Protein Soybean Meal Equivalent

Table 25: Middle East Oilseeds and Products Supply and Distribution

Thousand Metric Tons

	2020/21	2021/22	2022/23	2023/24	Jun 2024/25	Jul 2024/25
Production						
Oilseed, Cottonseed	1,165	1,413	1,848	1,230	1,508	1,508
Oilseed, Rapeseed	415	430	470	470	475	475
Oilseed, Soybean	285	289	317	309	324	324
Oilseed, Sunflowerseed	1,608	1,796	1,946	1,597	1,724	1,724
Other	216	234	186	200	205	205
Total	3,689	4,162	4,767	3,806	4,236	4,236
Domestic Consumption						
Meal, Cottonseed	648	787	998	690	839	839
Meal, Soybean	9,361	9,608	9,266	10,780	10,760	10,970
Meal, Sunflowerseed	2,695	2,258	2,240	2,389	2,164	2,239
Other	1,297	1,042	1,241	1,248	1,283	1,283
Total	14,001	13,695	13,745	15,107	15,046	15,331
SME						
Meal, Cottonseed	525	638	809	559	680	680
Meal, Soybean	9,359	9,606	9,264	10,780	10,760	10,970
Meal, Sunflowerseed	1,798	1,506	1,494	1,593	1,443	1,493
Other	871	757	918	913	943	943
Total	12,552	12,506	12,484	13,845	13,826	14,086
Imports						
Meal, Cottonseed	35	57	12	45	38	38
Meal, Soybean	6,050	6,230	5,221	7,390	6,910	6,910
Meal, Sunflowerseed	1,027	992	1,047	1,325	1,125	1,125
Other	873	828	700	756	796	796
Total	7,985	8,107	6,980	9,516	8,869	8,869
Imports						
Oil, Palm	2,912	3,277	3,292	3,523	3,570	3,570
Oil, Rapeseed	84	81	111	100	110	110
Oil, Soybean	613	540	515	436	546	546
Oil, Sunflowerseed	2,470	2,880	3,653	3,500	3,312	3,312
Other	233	227	255	205	214	214
Total	6,312	7,005	7,826	7,764	7,752	7,752
Industrial Dom. Cons.						
Oil, Palm	180	225	245	240	240	240
Oil, Rapeseed	10	10	25	25	25	25
Oil, Soybean	75	65	65	57	57	57
Oil, Sunflowerseed	20	20	25	25	25	25
Other	56	50	36	39	43	43
Total	341	370	396	386	390	390
Food Use Dom. Cons.						
Oil, Palm	2,160	2,366	2,567	2,626	2,730	2,745
Oil, Rapeseed	281	265	344	360	365	365
Oil, Soybean	1,072	1,114	1,089	1,100	1,204	1,204
Oil, Sunflowerseed	2,869	2,892	3,082	3,525	3,492	3,542
Other	659	681	740	588	647	647
Total	7,041	7,318	7,822	8,199	8,438	8,503
Domestic Consumption						
Oil, Palm	2,340	2,591	2,812	2,866	2,970	2,985
Oil, Rapeseed	291	275	369	385	390	390
Oil, Soybean	1,172	1,189	1,159	1,162	1,266	1,266
Oil, Sunflowerseed	2,899	2,922	3,122	3,565	3,532	3,582
Other	731	747	793	642	705	705
Total	7,433	7,724	8,255	8,620	8,863	8,928

Middle East includes Bahrain, Iran, Iraq, Israel, Jordan, Kuwait, Lebanon, Oman, Qatar, Saudi Arabia, Syria, Turkey, United Arab Emirates, and Yemen. SME - 44 Percent Protein Soybean Meal Equivalent

Table 26: European Union Oilseeds and Products Supply and Distribution

Thousand Metric Tons

	2020/21	2021/22	2022/23	2023/24	Jun 2024/25	Jul 2024/25
Production						
Oilseed, Rapeseed	16,732	17,353	19,613	20,000	18,750	18,900
Oilseed, Soybean	2,600	2,833	2,610	2,980	3,050	3,050
Oilseed, Sunflowerseed	8,897	10,328	9,385	10,000	10,900	10,900
Other	542	534	526	338	437	437
Total	28,771	31,048	32,134	33,318	33,137	33,287
Domestic Consumption						
Meal, Rapeseed	12,500	12,300	13,800	14,000	13,800	13,800
Meal, Soybean	28,342	27,742	26,742	26,742	27,242	27,242
Meal, Sunflowerseed	6,260	7,160	6,860	6,960	6,610	6,610
Other	1,916	2,058	2,307	2,206	2,194	2,194
Total	49,018	49,260	49,709	49,908	49,846	49,846
SME						
Meal, Rapeseed	8,894	8,751	9,819	9,961	9,819	9,819
Meal, Soybean	28,300	27,700	26,700	26,700	27,200	27,200
Meal, Sunflowerseed	4,135	4,736	4,536	4,602	4,369	4,369
Other	1,062	1,161	1,256	1,159	1,174	1,174
Total	42,391	42,348	42,311	42,422	42,561	42,561
Imports						
Meal, Rapeseed	467	576	843	950	700	700
Meal, Soybean	16,504	16,536	16,012	16,100	16,200	16,200
Meal, Sunflowerseed	2,571	2,563	2,756	2,900	2,500	2,500
Other	1,668	1,767	1,971	1,943	1,898	1,898
Total	21,210	21,442	21,582	21,893	21,298	21,298
Industrial Dom. Cons.						
Oil, Palm	3,860	2,700	2,200	2,030	2,000	2,000
Oil, Rapeseed	6,675	6,600	6,975	7,050	7,000	7,000
Oil, Soybean	1,100	1,100	1,100	1,100	1,100	1,100
Oil, Sunflowerseed	500	525	550	550	550	550
Other	585	587	555	555	585	585
Total	12,720	11,512	11,380	11,285	11,235	11,235
Food Use Dom. Cons.						
Oil, Palm	2,300	1,950	2,050	2,050	2,000	2,000
Oil, Rapeseed	2,400	2,600	2,900	2,800	2,800	2,800
Oil, Soybean	1,275	1,150	1,250	1,300	1,325	1,325
Oil, Sunflowerseed	4,300	4,750	4,650	4,850	4,700	4,700
Other	2,247	2,189	1,897	1,844	2,097	2,097
Total	12,522	12,639	12,747	12,844	12,922	12,922
Domestic Consumption						
Oil, Palm	6,360	4,850	4,400	4,210	4,100	4,100
Oil, Rapeseed	9,125	9,250	9,925	9,900	9,850	9,850
Oil, Soybean	2,430	2,305	2,405	2,455	2,480	2,480
Oil, Sunflowerseed	4,813	5,288	5,213	5,413	5,263	5,263
Other	2,845	2,789	2,457	2,399	2,682	2,682
Total	25,573	24,482	24,400	24,377	24,375	24,375
Imports						
Oil, Palm	5,951	5,015	4,548	4,400	4,200	4,200
Oil, Rapeseed	314	593	402	425	300	300
Oil, Soybean	493	459	623	500	525	525
Oil, Sunflowerseed	1,599	2,178	2,103	2,450	2,100	2,100
Other	1,570	1,575	1,477	1,477	1,495	1,495
Total	9,927	9,820	9,153	9,252	8,620	8,620

European Union includes Austria, Belgium, Bulgaria, Croatia, Cyprus, Czech Republic, Denmark, Estonia, Finland, France, Germany, Greece, Hungary, Ireland, Italy, Latvia, Lithuania, Luxembourg, Malta, Netherlands, Poland, Portugal, Romania, Slovakia, Slovenia, Spain, and Sweden.

Table 27: China Oilseeds and Products Supply and Distribution

Thousand Metric Tons

	2020/21	2021/22	2022/23	2023/24	Jun 2024/25	Jul 2024/25
Production						
Oilseed, Peanut	17,993	18,308	18,330	19,217	19,000	19,000
Oilseed, Rapeseed	14,049	14,714	15,531	16,321	15,600	15,600
Oilseed, Soybean	19,602	16,395	20,284	20,840	20,700	20,700
Oilseed, Sunflowerseed	2,570	2,154	1,741	1,983	1,600	1,750
Other	11,600	10,503	12,031	10,777	10,581	10,777
Total	65,814	62,074	67,917	69,138	67,481	67,827
Imports						
Oilseed, Peanut	1,373	785	940	620	700	700
Oilseed, Rapeseed	2,795	1,657	5,335	3,700	3,200	3,700
Oilseed, Soybean	99,740	90,297	104,500	108,000	109,000	109,000
Oilseed, Sunflowerseed	137	157	268	300	250	250
Other	72	297	665	500	500	500
Total	104,117	93,193	111,708	113,120	113,650	114,150
Domestic Consumption						
Meal, Peanut	4,090	4,077	4,005	3,998	3,958	3,958
Meal, Rapeseed	11,404	11,951	12,923	14,238	13,630	13,925
Meal, Soybean	74,425	71,100	75,050	77,150	80,450	80,650
Other	10,225	9,895	11,429	11,607	11,908	11,789
Total	100,144	97,023	103,407	106,993	109,946	110,322
SME						
Meal, Peanut	4,597	4,583	4,502	4,494	4,449	4,449
Meal, Rapeseed	7,776	8,165	8,857	9,792	9,356	9,566
Meal, Soybean	73,300	70,000	73,900	76,000	79,300	79,500
Other	8,680	8,426	9,212	9,411	9,658	9,579
Total	94,353	91,174	96,470	99,697	102,763	103,094
Food Use Dom. Cons.						
Oil, Palm	4,200	3,300	3,200	3,400	3,600	3,600
Oil, Peanut	3,567	3,323	3,418	3,351	3,319	3,319
Oil, Rapeseed	8,000	8,500	8,900	9,200	9,300	9,400
Oil, Soybean	17,800	17,100	17,000	18,100	18,800	18,800
Oil, Sunflowerseed	2,067	955	1,803	1,498	1,626	1,530
Other	1,640	1,646	1,705	1,586	1,586	1,586
Total	37,274	34,824	36,026	37,135	38,231	38,235
Domestic Consumption						
Oil, Palm	6,550	5,100	5,600	5,600	5,900	5,800
Oil, Peanut	3,567	3,323	3,418	3,351	3,319	3,319
Oil, Rapeseed	8,000	8,500	8,900	9,200	9,300	9,400
Oil, Soybean	17,800	17,100	17,000	18,100	18,800	18,800
Oil, Sunflowerseed	2,067	955	1,803	1,498	1,626	1,530
Other	2,278	2,169	2,452	2,306	2,336	2,336
Total	40,262	37,147	39,173	40,055	41,281	41,185
Imports						
Oil, Palm	6,818	4,387	6,190	5,400	6,000	6,000
Oil, Peanut	346	166	292	225	225	225
Oil, Rapeseed	2,365	973	1,998	2,150	1,700	1,700
Oil, Soybean	1,221	291	395	400	400	400
Oil, Sunflowerseed	1,640	513	1,555	1,250	1,450	1,300
Other	862	798	967	950	980	980
Total	13,252	7,128	11,397	10,375	10,755	10,605

SME - 44 Percent Protein Soybean Meal Equivalent

Table 28: India Oilseeds and Products Supply and Distribution

Thousand Metric Tons

	2020/21	2021/22	2022/23	2023/24	Jun 2024/25	Jul 2024/25
Production						
Oilseed, Cottonseed	11,675	10,316	11,166	11,123	10,614	10,614
Oilseed, Peanut	7,300	8,700	6,300	6,000	7,100	7,100
Oilseed, Rapeseed	8,600	11,100	11,200	11,600	12,100	12,100
Oilseed, Soybean	10,456	11,889	12,411	11,875	12,200	12,200
Oilseed, Sunflowerseed	150	140	215	112	113	113
Other	1,003	1,021	1,022	1,021	1,021	1,021
Total	39,184	43,166	42,314	41,731	43,148	43,148
Domestic Consumption						
Meal, Cottonseed	4,584	4,238	4,443	4,405	4,298	4,298
Meal, Rapeseed	3,650	4,375	4,350	4,550	4,925	4,875
Meal, Soybean	5,850	6,273	6,625	7,190	7,625	7,625
Other	2,445	2,348	2,176	2,115	2,284	2,284
Total	16,529	17,234	17,594	18,260	19,132	19,082
SME						
Meal, Cottonseed	3,714	3,434	3,600	3,569	3,483	3,483
Meal, Rapeseed	2,597	3,113	3,095	3,237	3,504	3,469
Meal, Soybean	5,500	5,873	6,225	6,740	7,150	7,150
Other	2,191	2,177	2,021	1,923	2,102	2,102
Total	14,003	14,597	14,941	15,470	16,239	16,203
Food Use Dom. Cons.						
Oil, Cottonseed	1,360	1,250	1,315	1,290	1,310	1,310
Oil, Palm	8,850	7,800	8,300	8,700	9,200	9,350
Oil, Peanut	1,160	1,185	1,050	1,040	1,115	1,115
Oil, Rapeseed	2,700	3,700	3,600	3,900	4,100	4,000
Oil, Soybean	4,950	5,825	5,400	5,150	5,600	5,600
Oil, Sunflowerseed	2,250	1,900	2,700	3,000	2,550	2,400
Other	400	375	400	416	415	415
Total	21,670	22,035	22,765	23,496	24,290	24,190
Domestic Consumption						
Oil, Cottonseed	1,408	1,295	1,361	1,345	1,350	1,350
Oil, Palm	9,225	8,150	8,900	9,350	9,850	10,000
Oil, Peanut	1,170	1,195	1,060	1,050	1,125	1,125
Oil, Rapeseed	2,780	3,780	3,680	3,980	4,180	4,080
Oil, Soybean	4,950	5,825	5,400	5,150	5,600	5,600
Oil, Sunflowerseed	2,250	1,900	2,700	3,000	2,550	2,400
Other	747	674	710	736	740	740
Total	22,530	22,819	23,811	24,611	25,395	25,295
Imports						
Oil, Cottonseed	8	4	1	3	5	5
Oil, Palm	8,411	8,004	10,045	9,000	9,200	9,400
Oil, Peanut	0	0	0	0	0	0
Oil, Rapeseed	25	34	6	5	5	5
Oil, Soybean	3,251	4,231	3,968	2,950	3,500	3,500
Oil, Sunflowerseed	1,958	1,956	2,988	3,100	2,200	2,050
Other	157	80	111	135	140	140
Total	13,810	14,309	17,119	15,193	15,050	15,100

SME - 44 Percent Protein Soybean Meal Equivalent