



United States
Department of
Agriculture

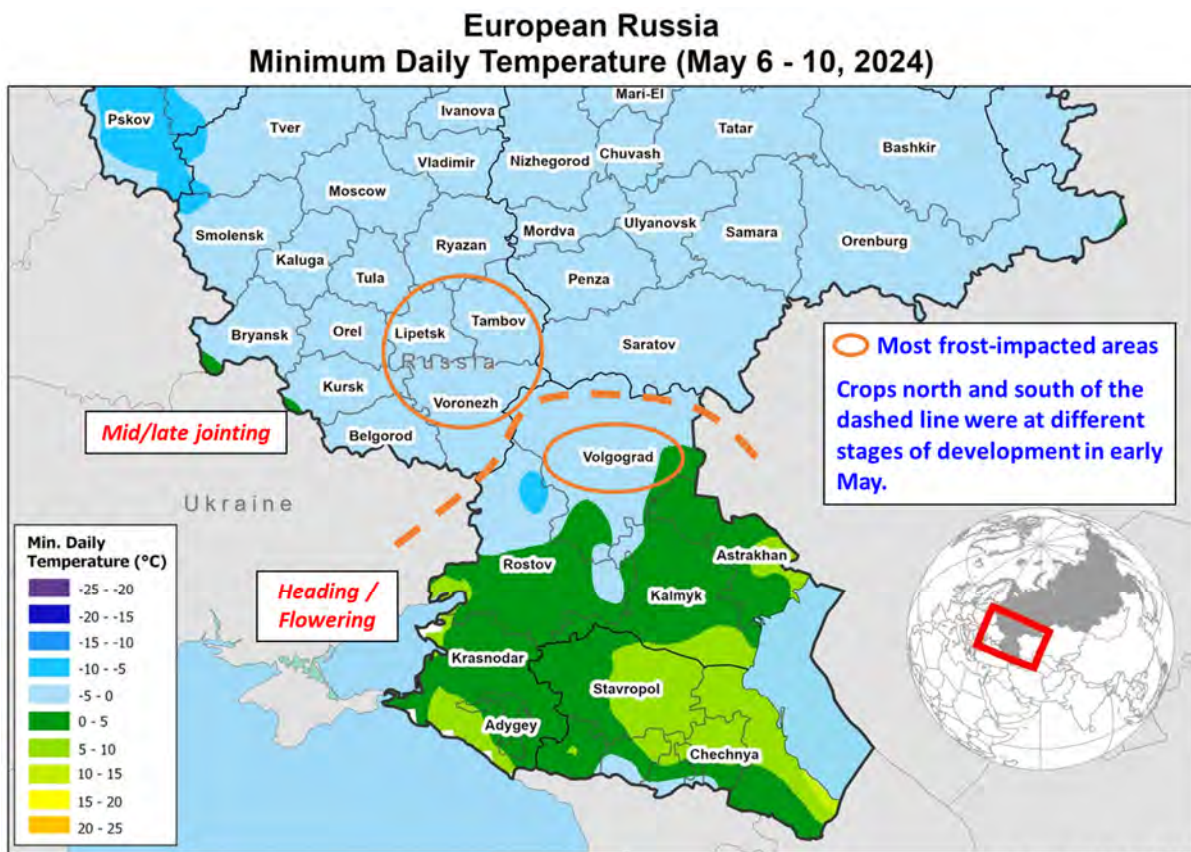
Foreign
Agricultural
Service

Circular Series
WAP 6-24
June 2024

World Agricultural Production

Russia Wheat: Frost and Dryness Damage Crops Across European Russia

Russia wheat production for marketing year 2024/25 is forecast at 83.0 million metric tons (mmt), down 6 percent from last month and 9 percent from last year and 1 percent from the 5-year average. The forecast includes 59.0 mmt of winter wheat and 24.0 mmt of spring wheat. USDA crop production forecasts for Russia exclude estimated output from Crimea. Total wheat yield is forecast at 2.95 tons per hectare, down 4 percent from last month and 7 percent from last year. Total harvested area is forecast at 28.1 million hectares (mha), down 1 percent from last month and 3 percent from last year.

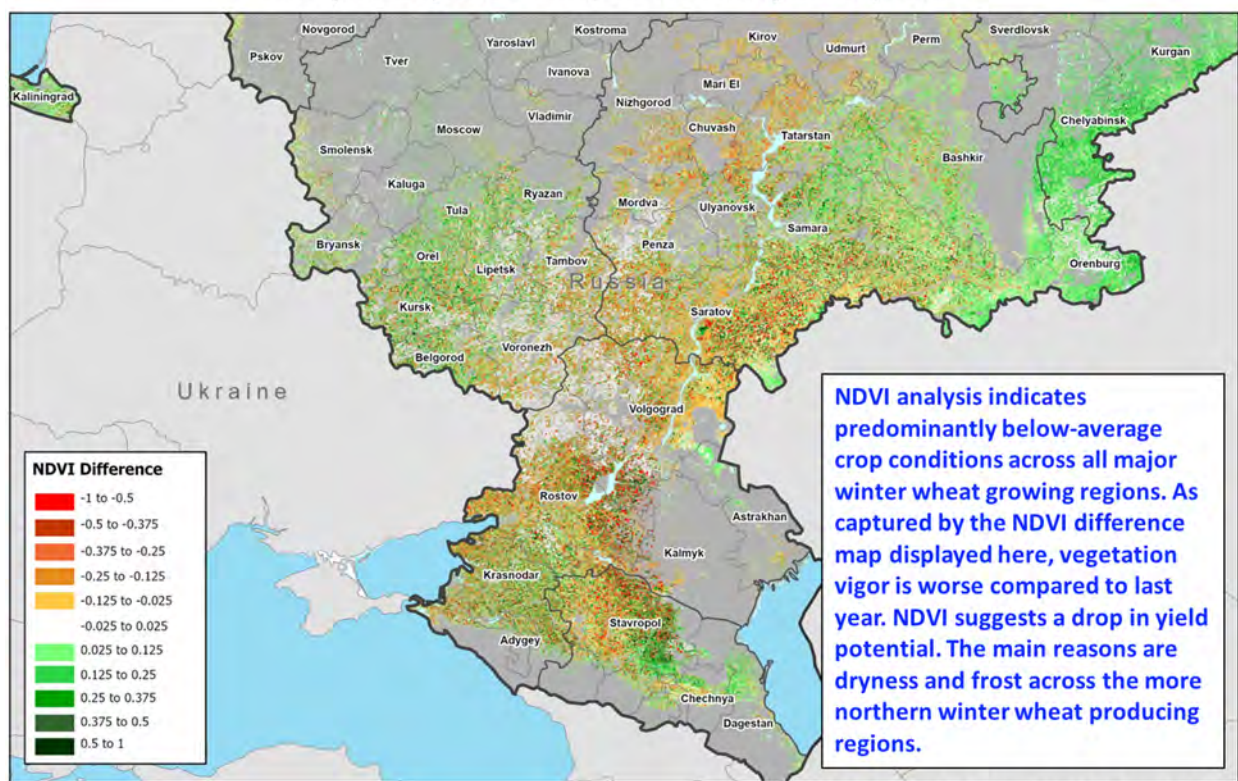


Winter wheat typically accounts for about 70 percent of total production, and it is grown primarily in the European part of Russia. This month, winter wheat production is revised down due to

Approved by the World Agricultural Outlook Board

unfavorable weather across all major winter wheat growing districts. Several early-May frost events caused damage to crops grown across the Central, the Volga and the northern-most end of the Southern Districts. Reports indicate that Lipetsk, Voronezh, Tambov, and Volgograd are among the most impacted areas. Preliminary assessment by the Russian Ministry of Agriculture (MinAg) suggests that at least 1.5 mha of crops were impacted; this number represents the potential total area loss for all crops. Overall, dryness and higher-than-average temperatures pushed winter wheat development ahead of the average this season. Frost impacts on crop yield potential are difficult to quantify due to many factors, including the exact stage of crop development, freeze duration, and available soil moisture prior to the frost. In addition to the frost, the crop is further stressed by an intensifying dryness spreading across most of European Russia. The persistent below-average precipitation left soil moisture reserves short for the currently reproductive (north) to filling (south) winter wheat. The analysis of the satellite-derived Normalized Difference Vegetation Index (NDVI) indicates predominantly below-average crop conditions across all major winter wheat growing regions. Vegetation vigor is lower compared to last year. NDVI suggests reduced yield potential this season compared to the previous two seasons.

European Russia NDVI Difference May 16-23, 2024 compared to May 17-24, 2023

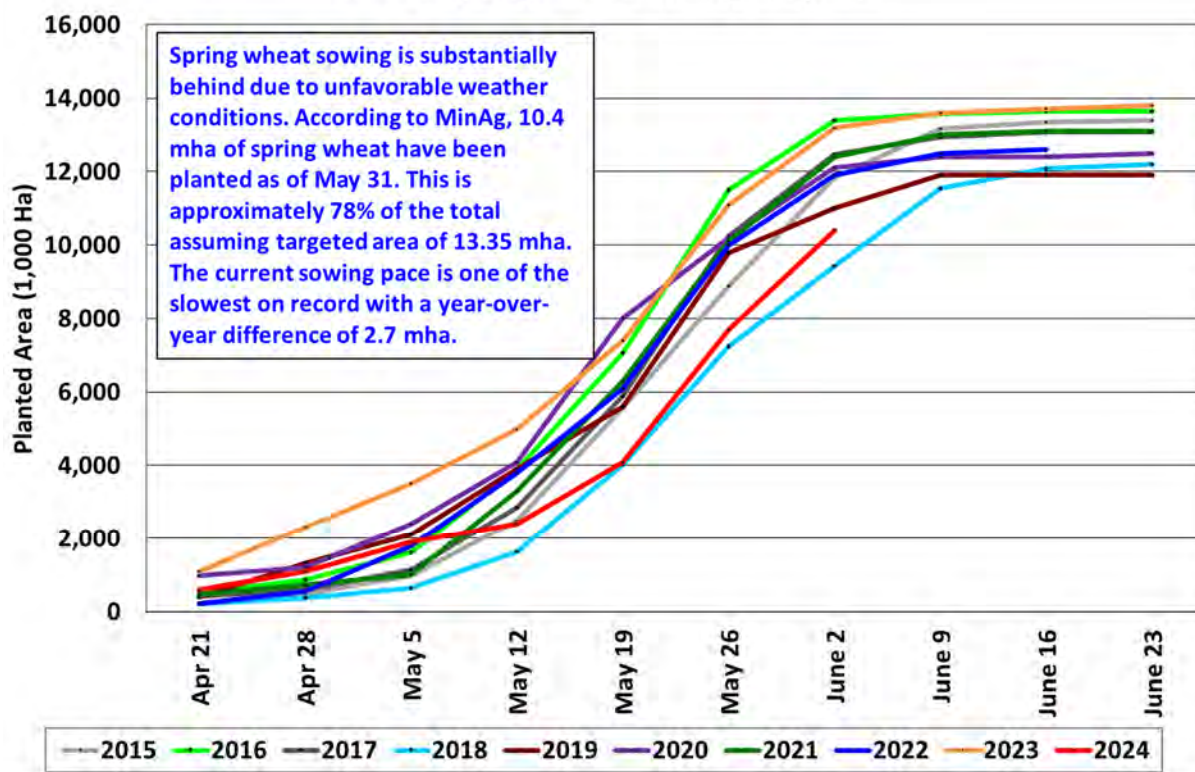


Source: VIIRS Imagery; GFSAD 30 m crop cover (2015)

Spring wheat, which accounts for about 30 percent of total production, is mainly planted in the regions bordering Kazakhstan: the Volga, Urals, and Siberian Districts of Russia. Spring wheat planting typically starts in late April. According to MinAg, as of May 31, spring wheat has been planted on an area of 10.4 mha, which is behind last year's pace, when planted area was 13.1 mha during the same time. The sowing delay is the most pronounced in the key spring wheat growing district of Siberia, where the year-over-year difference is 1.5 mha. Dryness in the west and above-

average wetness in the east create unfavorable conditions for both sowing and early establishment of the already planted spring crops across the whole of Russia.

Russia: Spring Wheat Sowing Progress



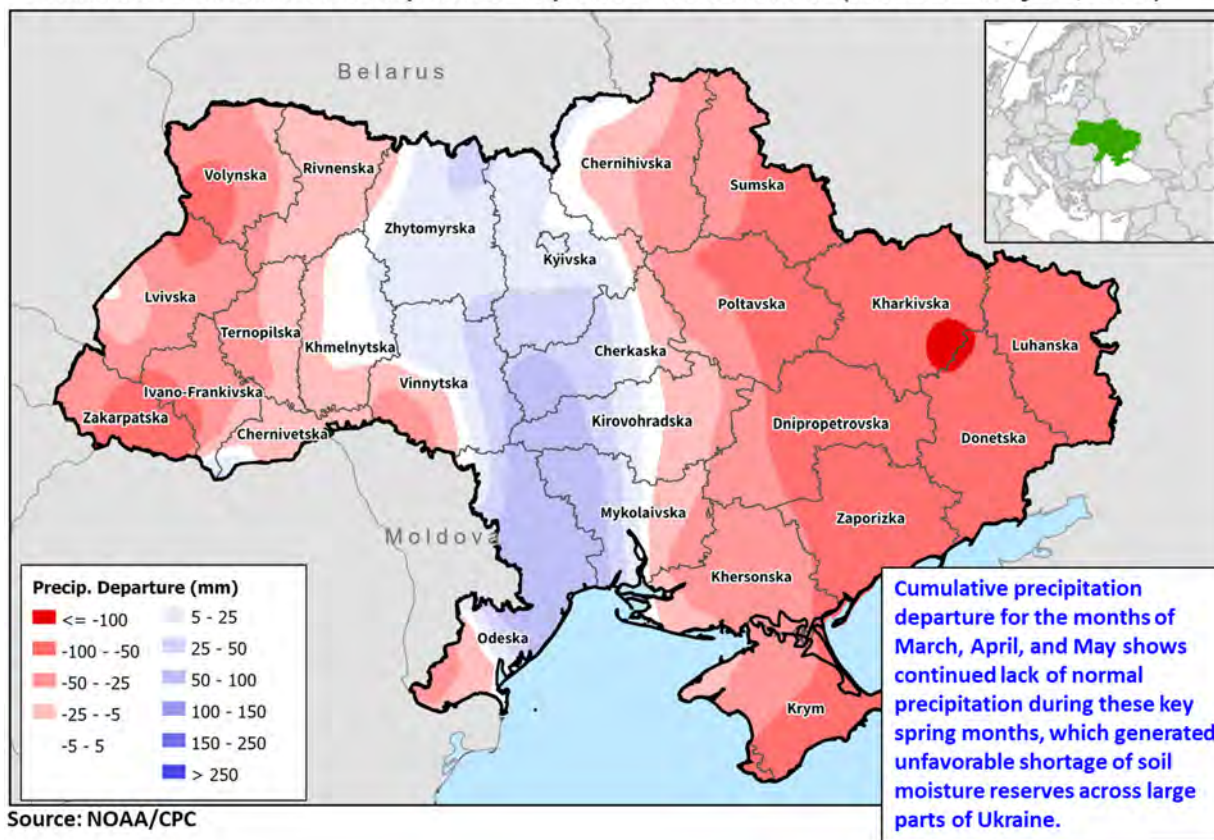
Source: Russian Ministry of Agriculture

Area, yield, and production estimates for Russia winter wheat and spring wheat are available on USDA PSD Online. Select “Downloadable Data Sets” and open the zipped file for “Russia Wheat; Winter/Spring Area & Production” (*For more information, please contact Iliana.Mladenova@usda.gov.*)

Ukraine Wheat: Intensifying Dryness Hampers Yield Prospects

Ukraine wheat production for marketing year (MY) 2024/25 is forecast at 19.5 million metric tons, down 7 percent from last month, 15 percent from last year, and 26 percent from the 5-year average. Yield is forecast at 4.15 tons per hectare, down 7 percent from last month and 10 percent from last year. Harvested area is forecast at 4.7 million hectares (mha), unchanged from last month, down 6 percent from last year and 26 percent from the 5-year average.

UKRAINE: Cumulative Precipitation Departure from Normal (March 1 - May 31, 2024)



This month's wheat production is revised down amid unfavorable weather. Ukraine has been experiencing an overall dry spring season. The precipitation amounts in many regions have been below average since March. Thus, the lack of adequate precipitation during the month of May further reduced the already short soil moisture reserves for the flowering to filling crop. As shown by the satellite-derived Normalized Difference Vegetation Index (NDVI), current vegetation conditions are mixed, but are predominantly below average across most of the key winter grains producing areas.

UKRAINE: NDVI Anomaly (May 16 - 23, 2024)



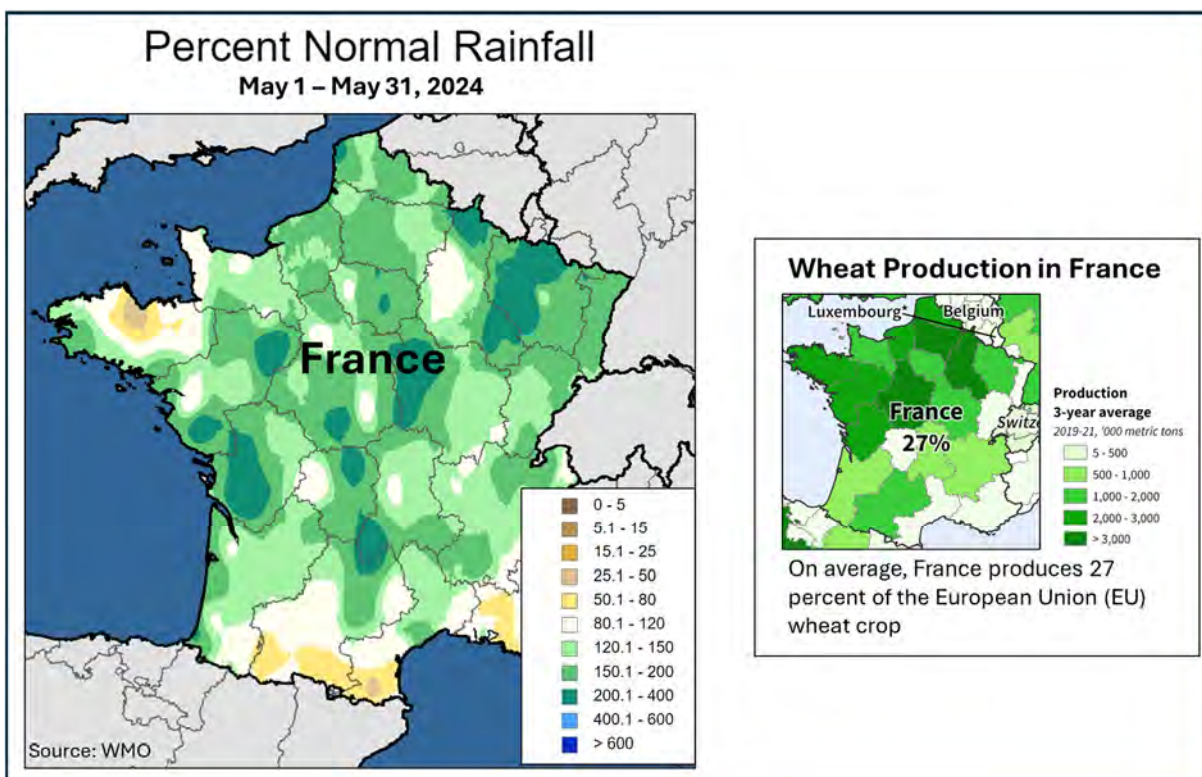
Source: VIIRS Imagery; GFSAD 30 m crop cover (2015)

Winter wheat, which accounts for about 97 percent of the total wheat production in Ukraine, is typically planted between early September and mid-November. Harvest generally occurs from the end of June until mid-August.

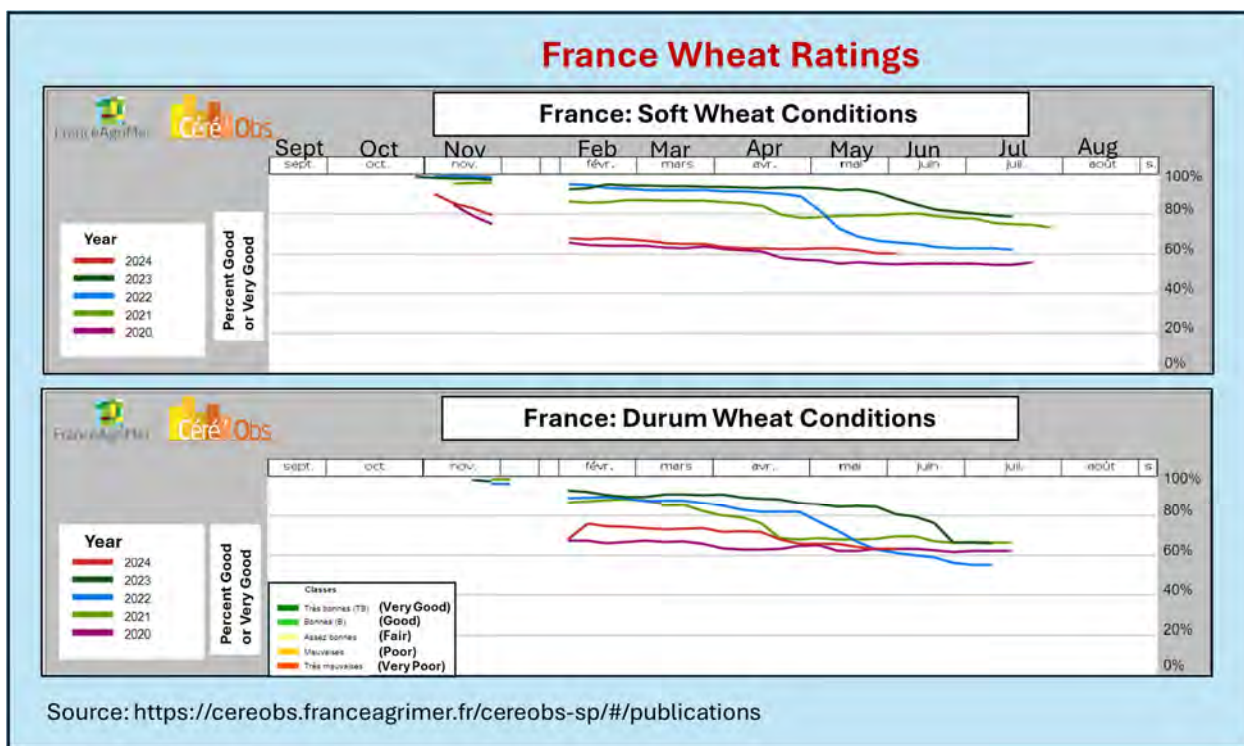
At present, Ukraine can be divided into two zones, areas in conflict and areas not in conflict. As elaborated by FAS/Kyiv, due to the ongoing war there is no official and reliable information about the status of Ukraine's agriculture in the conflict zone. As a result, area and production data currently provided by FAS/Kyiv, Ukraine's Ministry of Agriculture (MinAg) and the State Statistical Service of Ukraine, which inform USDA's forecasts, do not reflect the whole country. For the MY 2024/25 season the MinAg operational field data information for both the MY 2024/25 winter and spring crops excludes the temporarily occupied territory of the Donetsk, Zaporizhzhia, Luhansk and Kherson regions. This is based on a note included in the MinAg operational field reports. MinAg also does not include Crimea. USDA crop production estimates for Ukraine include estimated output from Crimea. Crimean area and production numbers are extracted from the agricultural crop reports provided by the Russian Statistical Agency, Rosstat. (For more information, please contact Iliana.Mladenova@usda.gov.)

France Wheat: Rainfall Dampens Outlook

Wheat production in France for marketing year (MY) 2024/25 is estimated at 31.7 million metric tons (mmt), down 1.5 mmt from last month, 4.6 mmt below last year and 12 percent below the 5-year average. Harvested area is estimated at 4.6 million hectares (mha), unchanged from last month, but down 0.4 mha from last year and down 8 percent from the 5-year average. Yield is estimated at 6.88 tons per hectare (t/ha), 5 percent lower than last month, 6 percent below last year and 4 percent below the 5-year average. The change in France's production lowers the overall estimated European Union (EU) wheat total to 130.5 mmt.



Rain continues to cause difficulties for the French wheat crop during the MY 2024/25. Since autumn 2023, excessive rains have led to widespread issues for wheat. Rainfall in May continued to be above average. French farmers have experienced planting delays, less sown area, emergence issues, and few windows with dry weather for allowing input activities in the fields. While frequent rainfall has contributed to vigorous vegetative growth, concerns about the effects of excessive rainfall is now apparent in France as well as other nearby countries such as the United Kingdom and Germany.

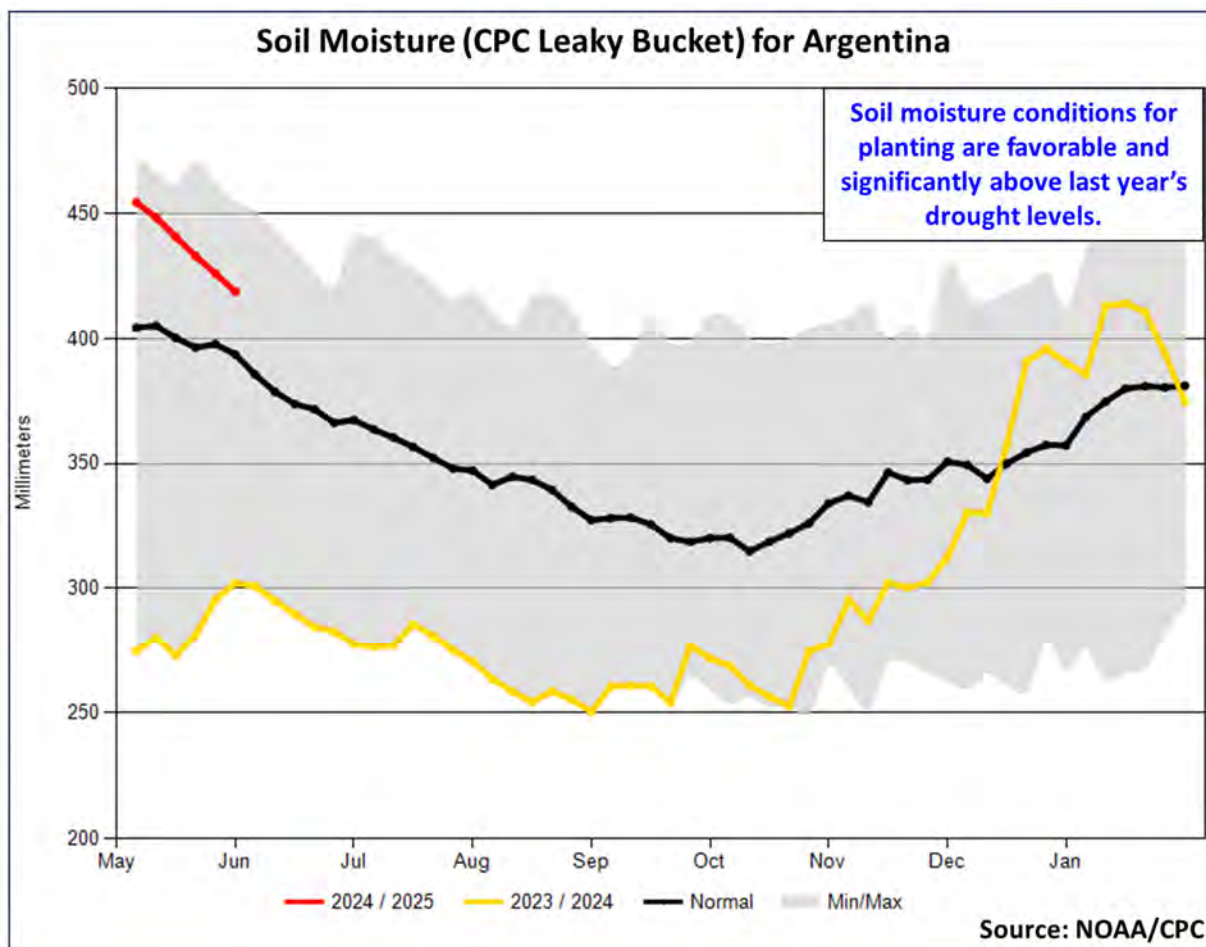


Yields will likely be increasingly variable across the northern French wheat belt as crops on heavier soils are struggling with standing water. According to the French farm ministry, FranceAgriMer, on June 3rd, 62 percent of the soft wheat crop was rated as good or excellent. This score for soft wheat is the lowest since 2020, when heavy rains also negatively affected the crop. Increased attention is also turning to fungus potential and quality concerns. France remains the EU's largest wheat producer, followed by Germany, which is estimated unchanged from last month at 20.2 mmt.

For country-specific area, yield, and production estimates within the EU, please go to USDA PSD Online at <https://apps.fas.usda.gov/PSDOnline/app/index.html#/app/home>, and select "Downloadable Data Sets." Select the zipped file for "EU Countries Area & Production." (For more information, please contact Bryan.Purcell@usda.gov.)

Argentina Wheat: Increased Planted Area Boosts Production

Argentina wheat production for marketing year 2024/25 is forecast at 17.5 million metric tons, up 3 percent from last month, and up 10 percent from last year. Yield is forecast at 3.02 tons per hectare, down 2 percent from last month, but up 6 percent from last year. Harvested area is forecast at 5.8 million hectares (mha), up 6 percent from last month, and up 4 percent from last year.

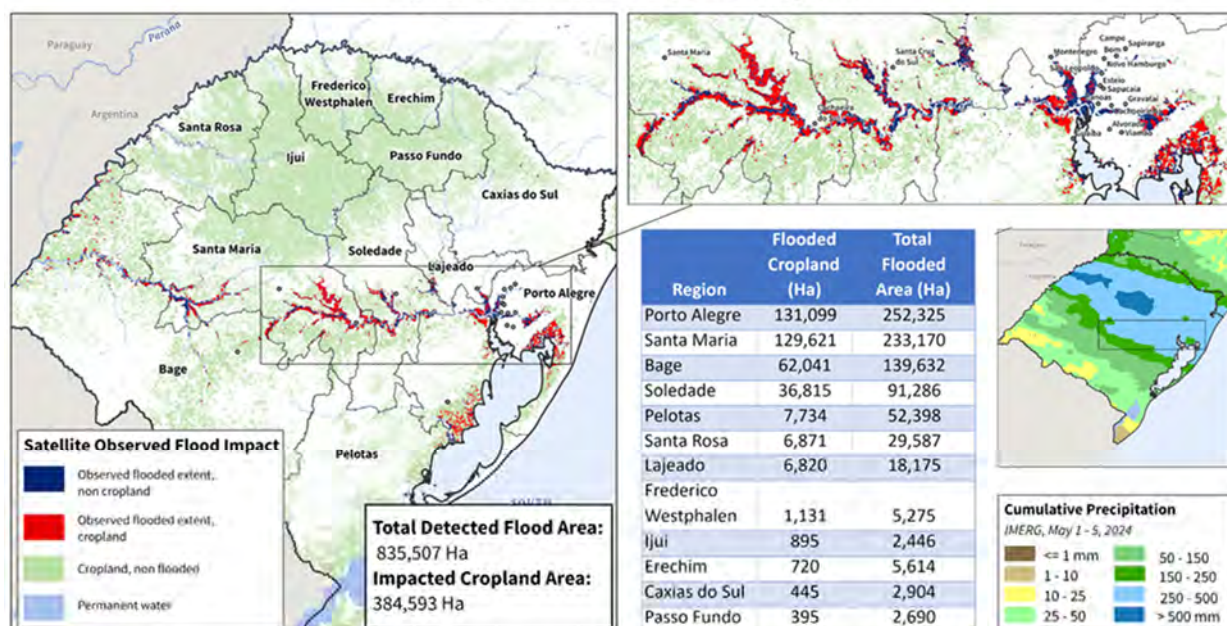


Planting occurs from late May until the end of July and is about 21 percent complete as of early June. This month, the Ministry of Agriculture published their first wheat planted area forecast of 6.15 mha. USDA expects abandonment to be normal this year, which is around 5 percent on average. Conditions for planting are favorable and soil moisture at this stage is significantly above last year's drought. Harvest begins in November. *(For more information, please contact Katie.McGaughey@usda.gov.)*

Brazil Rice: Flooding in Rio Grande do Sul Lowers Area and Production for MY 2023/24

USDA estimates Brazil rice production for marketing year (MY) 2023/24 at 7.0 million metric tons (milled basis), down 3 percent from last month, but up 3 percent from MY 2022/23. Harvested area is estimated at 1.5 million hectares (ha), down 45,000 ha or 3 percent from last month, but up 1 percent from the previous year. Yield is estimated at 6.86 metric tons per hectare (rough basis), slightly down from last month, but up 1 percent from the previous year.

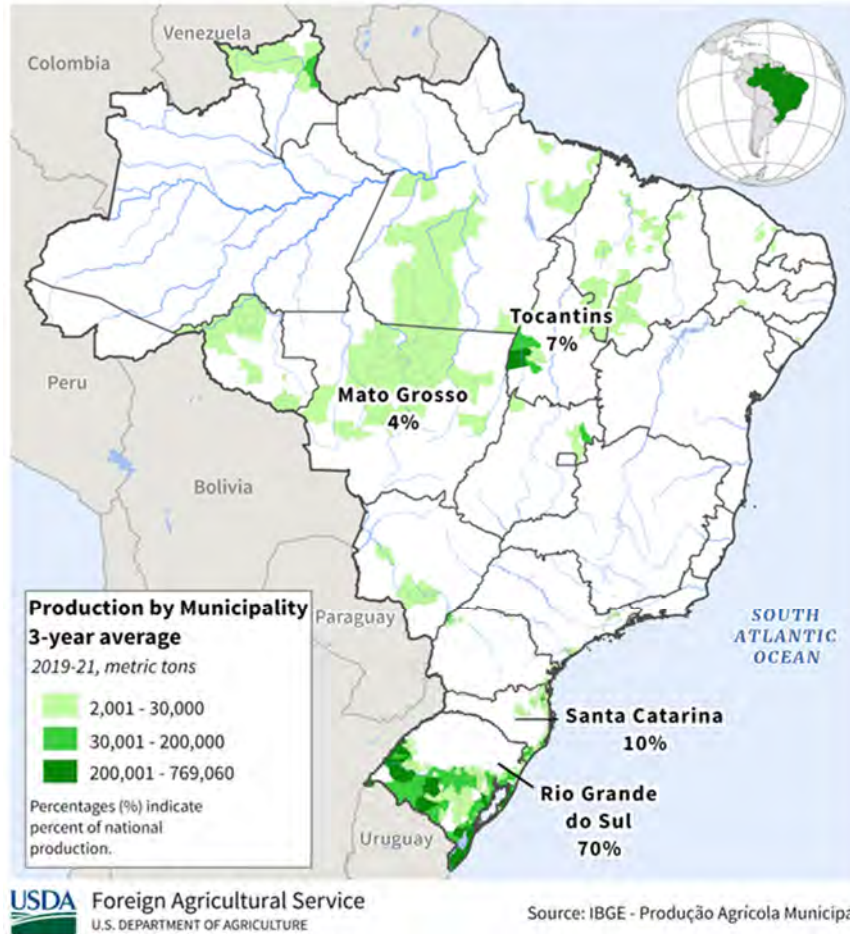
Rio Grande do Sul: Flood Impact



Sources: NOAA/NESDIAS, VIIRS Flood Extent (May 1-5); ESA Worldcover 10m 2021 Crop Mask; SWOT River Database; ESRI Populated Places; NASA IMERG Cumulative Precipitation, Pentad; Flood extent defined as pixels containing 40% or greater flooding for the period May 1-5, 2024

During a two-week period in late April and early May, Rio Grande do Sul received over 400 mm of rainfall, with 90 percent of the state's municipalities affected by flooding. Flood impact assessments for croplands are in their early stages and are ongoing. An initial analysis using satellite imagery indicated nearly 385,000 ha of croplands which were specifically flooded during the period, particularly in low-lying areas where rice is cultivated. More extensively, early reporting from the *Associação Riograndense de Empreendimentos de Assistência Técnica e Extensão Rural* (EMATER/RS) suggested just under 1.5 million ha of the state's grain area was affected by flooding and the heavy rains that continued throughout the first half of May.

Brazil: Rice Production



USDA has lowered its outlook on MY 2023/24 Brazil rice production due to the impacts of historic flooding in Rio Grande do Sul, where 70 percent of the total rice crop is grown. Fortunately, the onset of major flooding occurred towards the end of the rice harvest, limiting crop losses, with 84 percent of the rice harvest complete as of May 8, according to the *Instituto Rio Grandense do Arroz* (IRGA). Furthermore, IRGA estimates the area affected by flooding to be less than 50,000 ha, with production losses under 400,000 metric tons. The *Companhia Nacional de Abastecimento* (CONAB) reports harvest progress in Rio Grande do Sul at 97 percent as of June 2, and nationally, just over 3 percent of the crop remaining to harvest. (For more information, please contact Aaron.Mulhollen@usda.gov.)

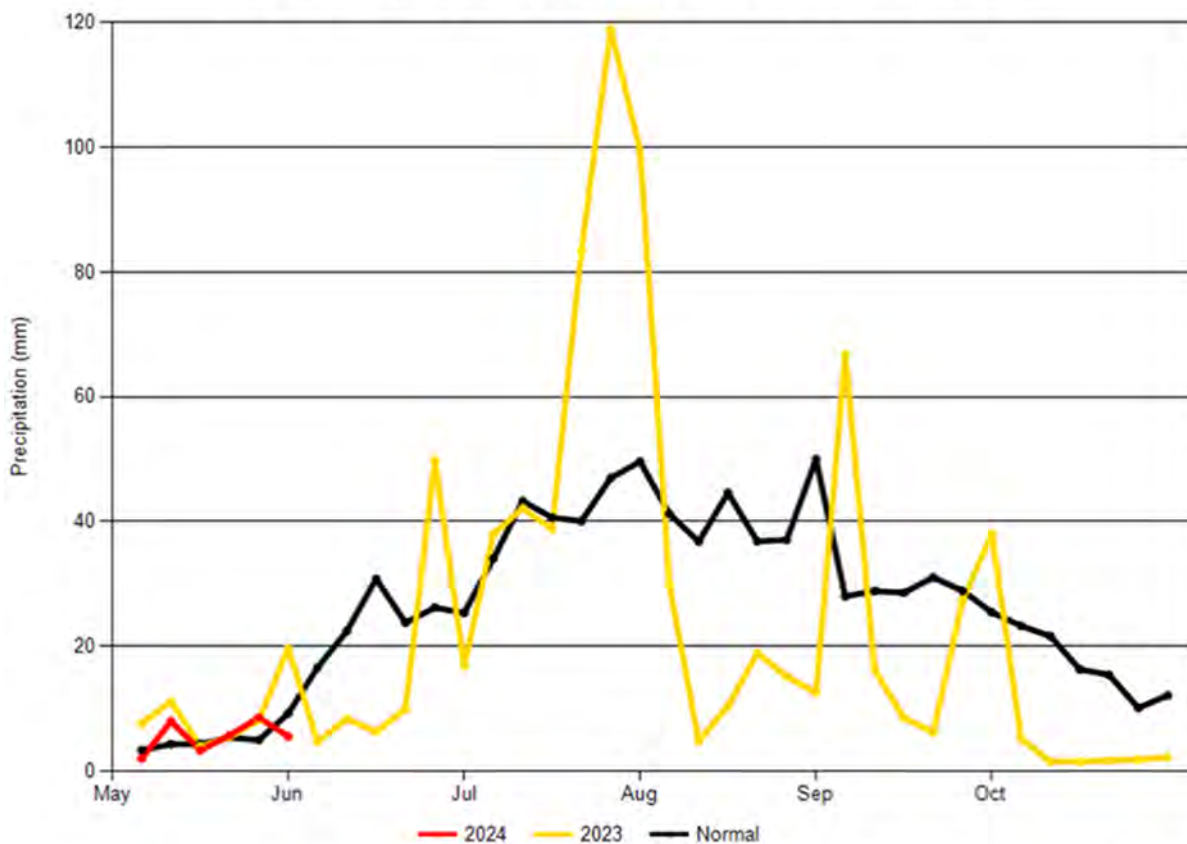
India Rice: Production Up 3 Million Metric Tons from Last Month for MY 2023/24

USDA estimates India rice production for marketing year (MY) 2023/24 at 137.0 million metric tons (mmt) (milled basis), up 2 percent from last month, 1 percent from last year and 6 percent above the 5-year average. Harvested area is estimated at 47.6 million hectares, down slightly from last year, but up 3 percent above the 5-year average. Yield is estimated at 4.32 metric tons per hectare, up 3 percent from last month and 1 percent from last year.

The 2023 southwest monsoon season started on time in June, however the rainfall was very erratic throughout the *kharif* growing season across the entire country. The *kharif* crop, which is the largest producing season, is planted starting in May and the harvest is complete by January.

According to the Third Advance Estimate released by the Government of India, Department of Agriculture and Farmers Welfare, Telangana was the largest producing rice state in MY 2023/24. In Telangana, there was poor rainfall at the beginning of the monsoon season, however, favorable rains came at the end of July and in the beginning of August providing ample moisture at a critical time to the planted crop thus boosting crop growth. Additional spikes in rainfall occurred again in September and October which provided sufficient moisture for any plants that had not yet reached maturity and for the planting of the *rabi* crop.

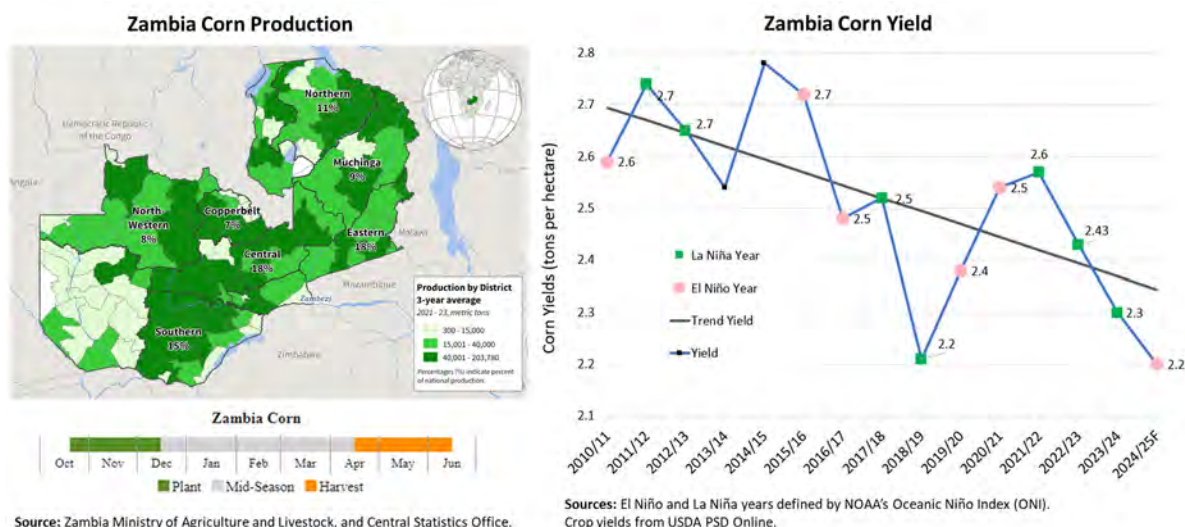
Precipitation (CHIRPS) for Telangana



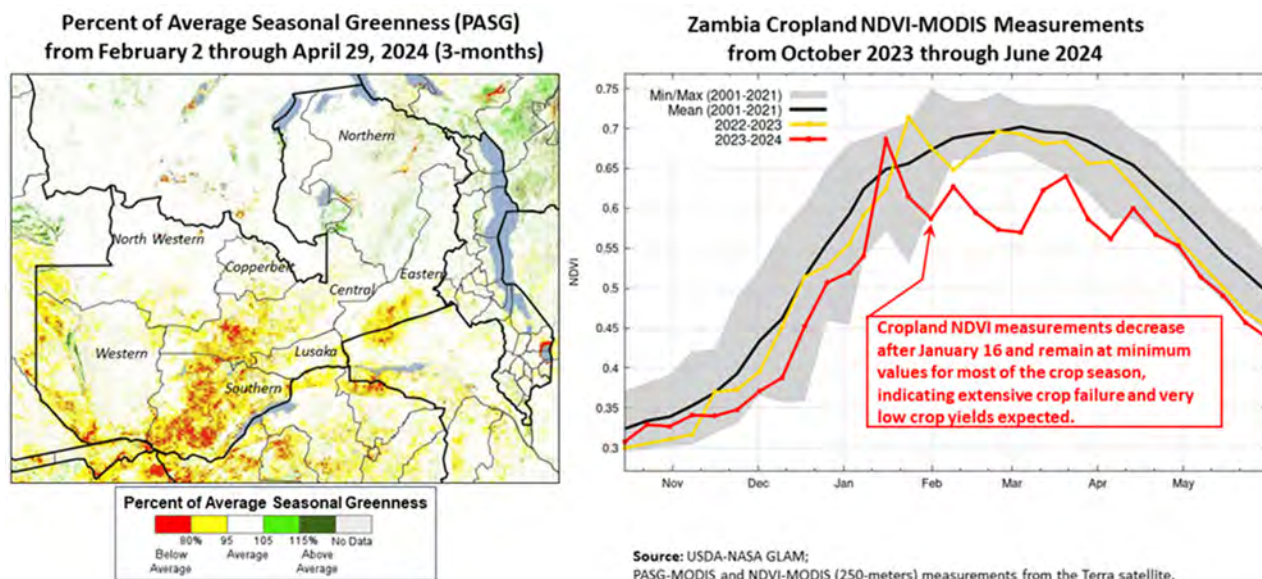
Source: UCSB CHIRPS and crop mask from SPAM rainfed cropland 2010

The *kharif* crop is followed by a much smaller *rabi* crop which consists of both rainfed and irrigated fields. The *rabi* crop is planted in December and harvested in May and is not dependent on the annual southwest monsoon. After the *rabi* crop, an even smaller summer crop is then planted. There are 3 seasons for rice; *kharif* which accounts for 83 percent, *rabi* (10 percent) and a summer crop (7 percent), according to the Government of India. (For more information, please contact Shannon.Moyo@usda.gov.)

Zambia Corn: El Niño Drought Reduces Production by 50 Percent from Average



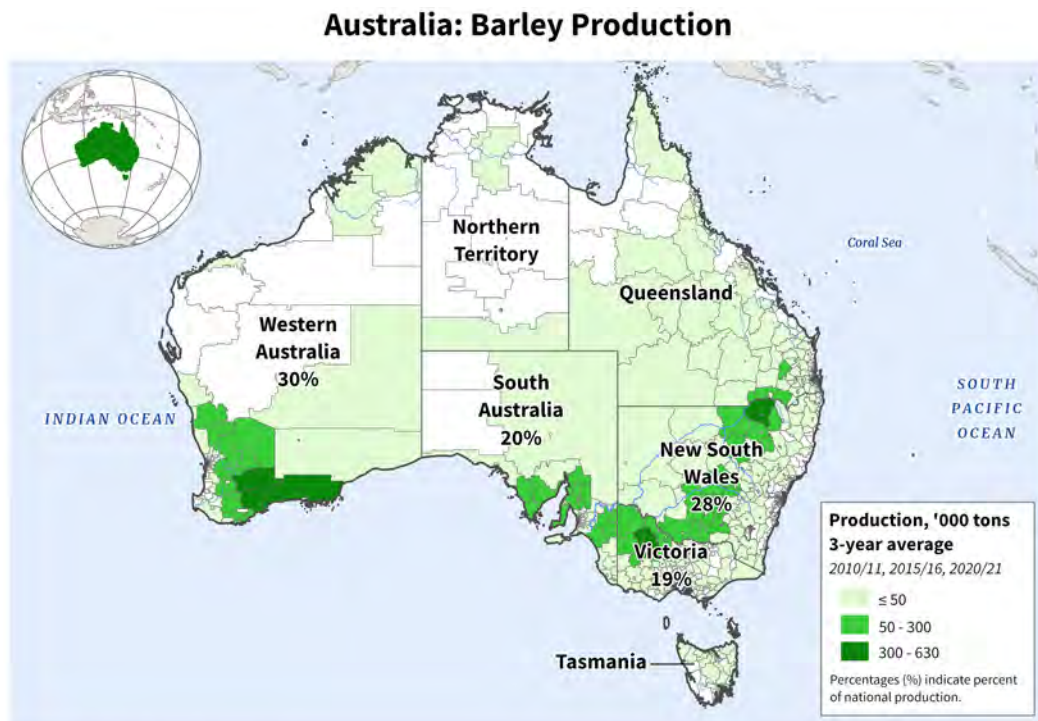
Zambia’s marketing year (MY) 2024/25 corn production is estimated at 1.51 million metric tons (mmt), down 1.75 mmt (54 percent) from last year’s crop, and down 50 percent from the 5-year average. Harvested area is estimated at 0.69 million hectares (mha), down 0.73 mha (52 percent) from last year, and down 44 percent from the 5-year average. Yield is estimated at 2.20 metric tons per hectare (t/ha), down 4 percent from last year’s yield and down 10 percent from the 5-year average.



Most of Zambia experienced six weeks of drought from mid-January through the end of February. The prolonged drought was caused by the 2023/24 El Niño. February 2024 rainfall totals were the lowest since 1920, according to February rainfall totals from the Global Precipitation Climatology Centre (GPCC, 1920-1980) and CHIRPS (1981-2024). On February 29, 2024, Zambia’s president declared the 2023/24 El Niño drought a national disaster for the country. Zambia is expected to import substantial volumes of corn to compensate for extensive crop failures, according to their president.

The most affected regions by the El Niño drought were Central, Eastern, Southern, and Western, which typically contributes nearly 60 percent of the country's annual corn production. The prolonged dry spell in February also reduced the satellite-derived Normalized Difference Vegetation Index (NDVI) measurements to minimum levels from mid-January through the end of the growing season. Additionally, the February drought occurred during the critical pollination stage which reduced yield to 2.20 t/ha and reduced planted corn area by 0.98 mha, according to Zambia’s Ministry of Agriculture Crop Forecast Survey released in early June. Zambia corn is planted from mid-October through mid-December and harvested from late April through August. (For more information, contact Curt.Reynolds@usda.gov.)

Australia Barley: Production Revised Higher

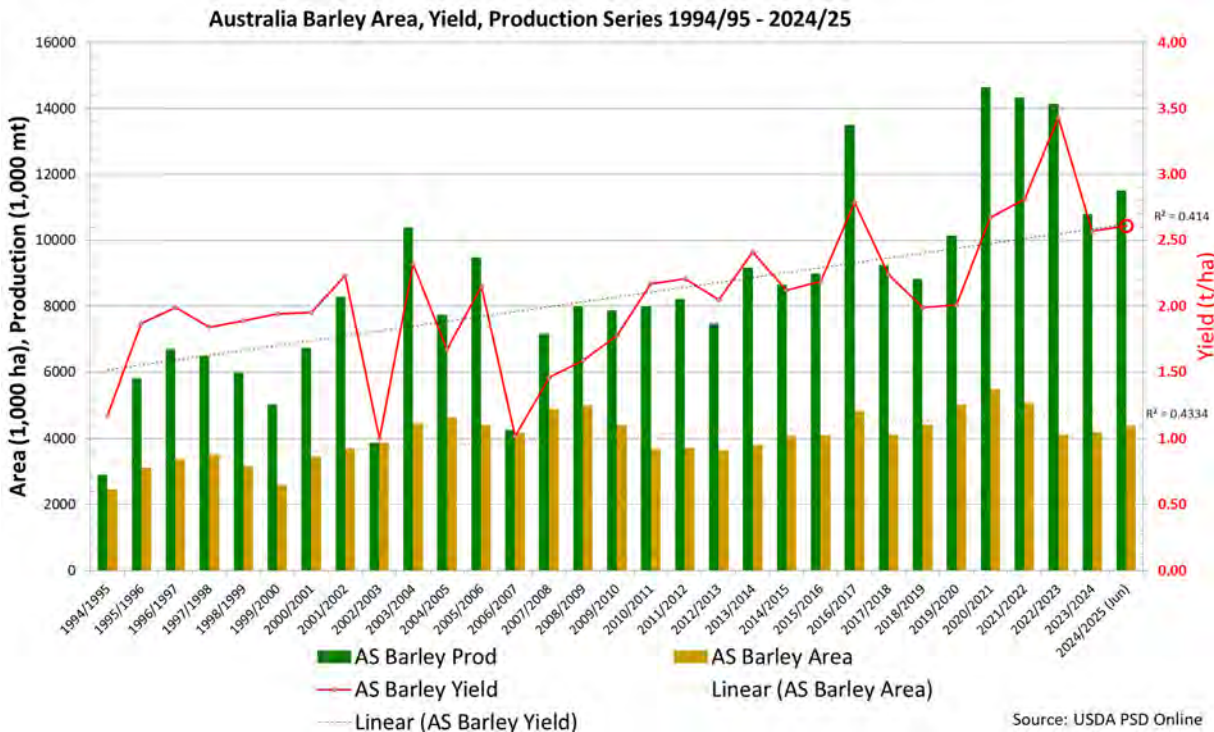


USDA Foreign Agricultural Service
U.S. DEPARTMENT OF AGRICULTURE

Source: Australian Bureau of Statistics, Agricultural Censuses of 2010/11, 2015/16, and 2020/21 (2021 SA2 Boundaries)

Australia's barley production for the 2024/25 marketing year is forecast at 11.5 million metric tons (mmt), a 6 percent increase from both the previous month and last year. Harvested area is forecast at 4.4 million hectares (mha), unchanged from last month, but up 0.2 mha or 5 percent from last

year. Yield is forecast at 2.61 tons per hectare (t/ha), up 6 percent from last month, and up 2 percent from last year.

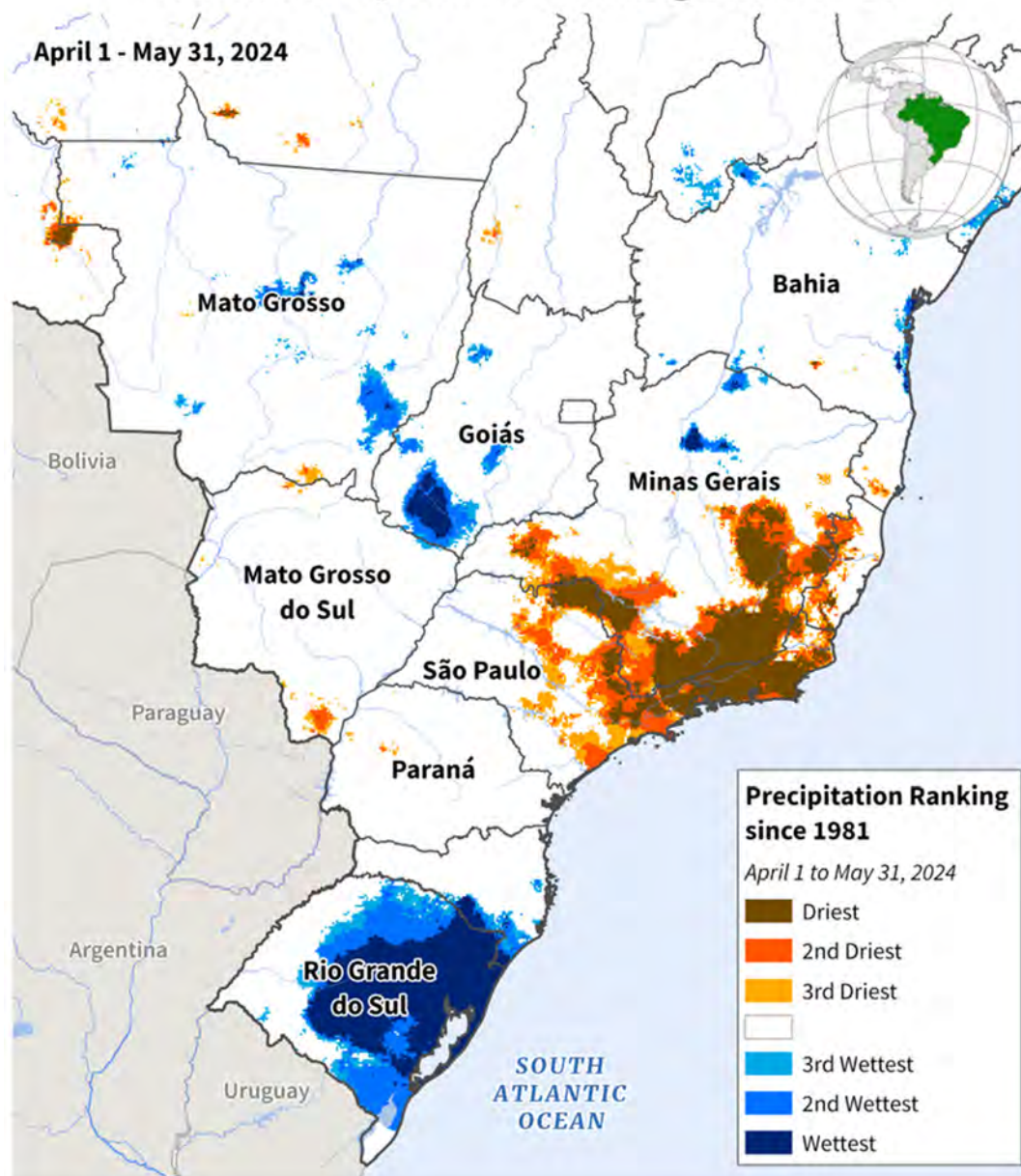


Yield is forecast higher in conjunction with the latest information from the Australian Bureau of Agricultural and Resource Economics and Sciences (ABARES). Barley sowing commenced in April and continues into June. Harvest begins in November and continues through December. (For more information, please contact James.Crutchfield@usda.gov.)

Brazil Soybeans: Historic Flooding in Rio Grande do Sul Lowers MY 2023/24 Production

USDA estimates Brazil soybean production for marketing year (MY) 2023/24 at 153.0 million metric tons (mmt), down 1 percent from last month, 6 percent from MY 2022/23, but 7 percent above the 5-year average. Harvested area is estimated at 45.8 million hectares, down slightly from last month, but up 3 percent from the previous year and 10 percent above the 5-year average. Yield is estimated at 3.34 metric tons per hectare, slightly down from last month, down 8 percent from MY 2022/23, and 2 percent below the 5-year average.

Brazil: Precipitation Ranking Since 1981

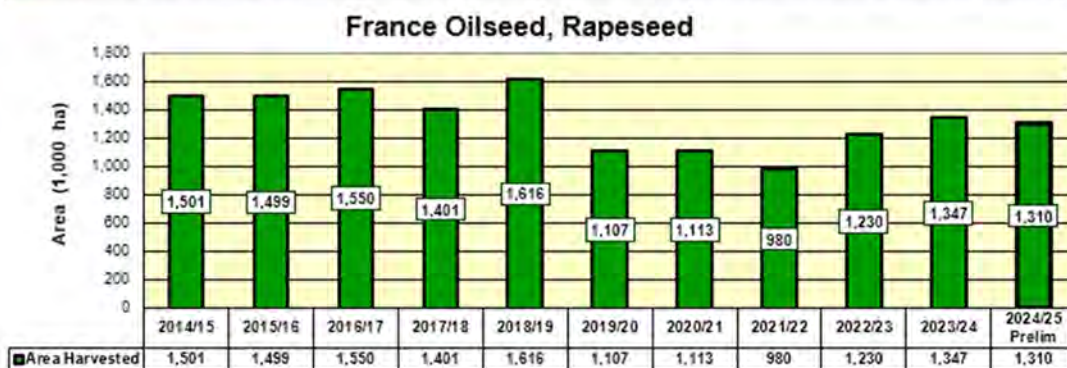
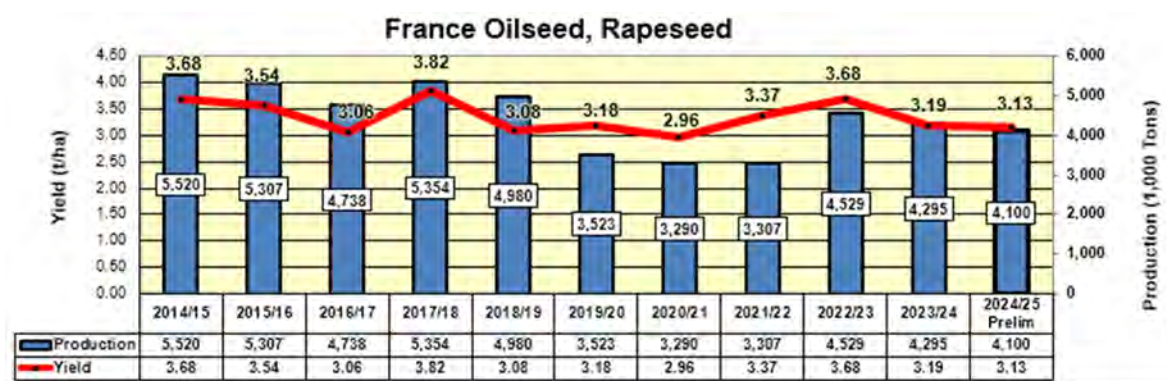


Source: UCSB CHC CHIRPS Precipitation Data

Rio Grande do Sul experienced record rainfall in the months of April and May, resulting in historic flooding that has damaged or destroyed crops across the state. The timing of the soybean harvest limited potential losses for the crop. The *Companhia Nacional de Abastecimento* (CONAB) reported harvest progress in Rio Grande do Sul at 75 percent complete during the onset of flooding at the beginning of May. Initial estimates in a report on flood losses, published on June 4 by the *Associação Riograndense de Empreendimentos de Assistência Técnica e Extensão Rural* (EMATER/RS), indicate that up to 2.7 mmt of soybeans may have been lost due to the flooding. However, damage assessments remain in their early stages, and the impacts of this flooding on crop production will be better understood in the coming months. (For more information, please contact Aaron.Mulhollen@usda.gov.)

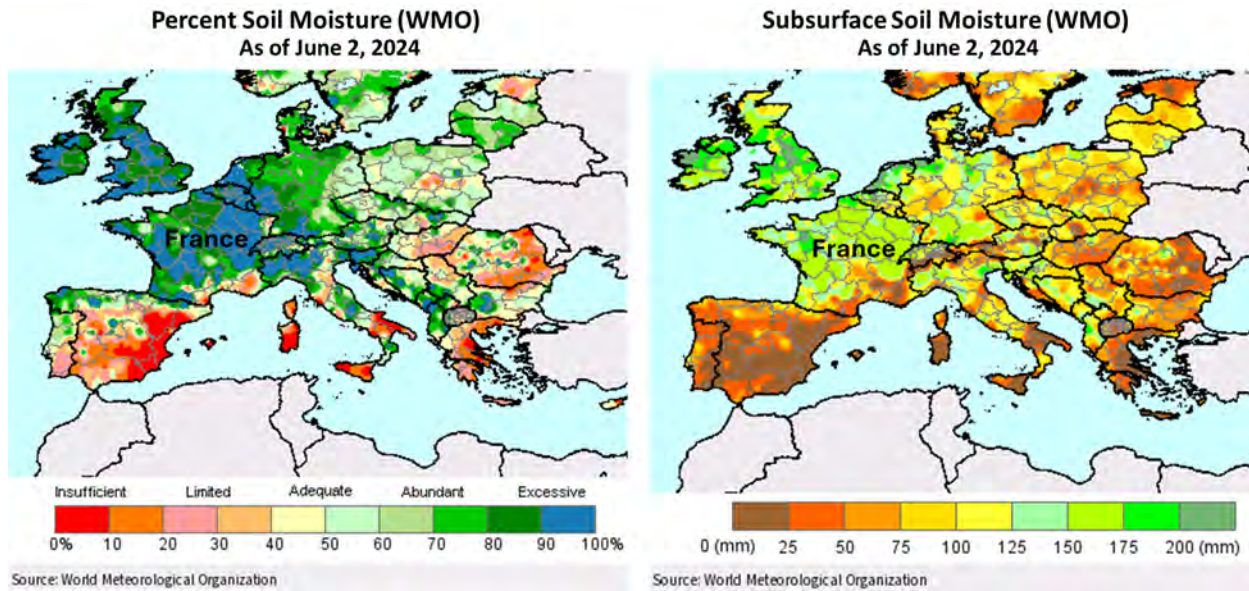
France Rapeseed: Production Reduced Due to Unfavorable Spring Weather

France rapeseed production is forecast at 4.1 million metric tons (mmt), down 0.3 mmt or 6 percent from last month, 5 percent below last year, but up 8 percent from the 5-year average of 3.8 mmt. Harvested area is forecast at 1.3 million hectares (mha), unchanged from last month, down 3 percent from last year, but up 13 percent above the 5-year average. Yield is forecast at 3.13 tons per hectare (t/ha), down 6 percent from last month, down 2 percent from last year, and down 4 percent from the 5-year average. The 0.3 mmt reduction in France, along with a few smaller changes in other European Union (EU) countries, nets a total EU rapeseed crop of 18.75 mmt, down 250,000 metric tons from last month.



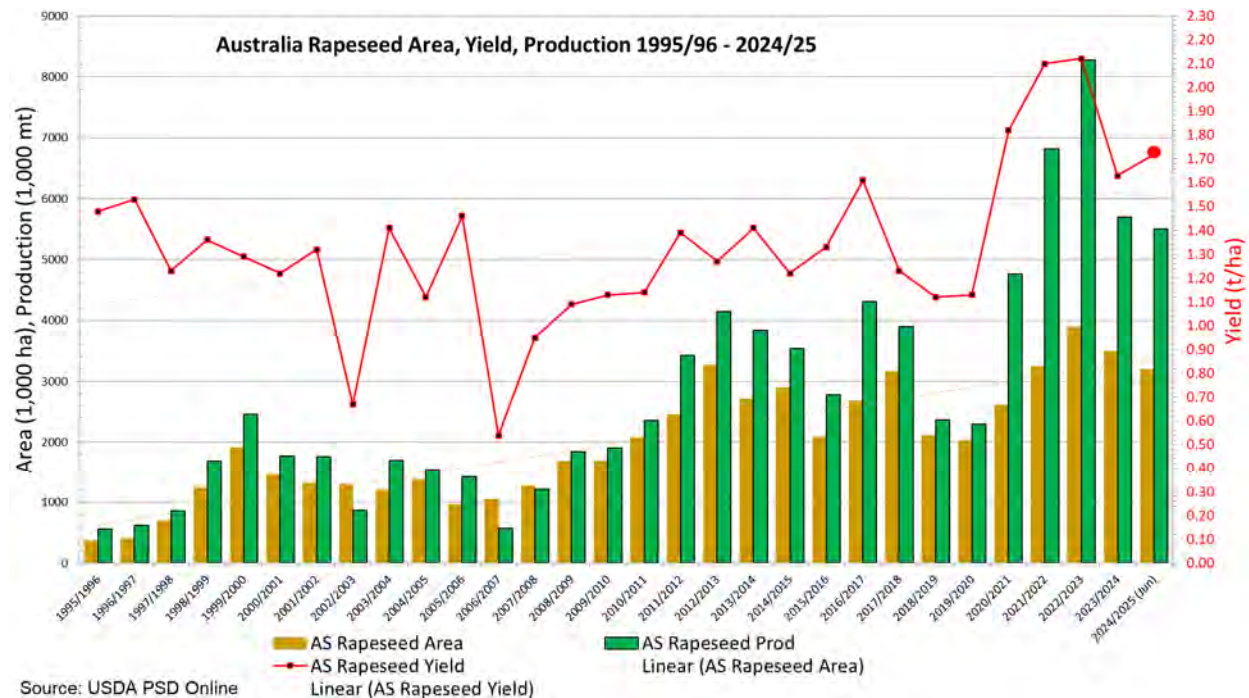
Source: USDA PSD Online

Rapeseed in France has struggled with significant challenges this season. Primarily, continuous, and excessive rainfall has been a constant bane for rapeseed farmers since planting last autumn. The month of May was no exception as above-average rains continued to fall on soaked fields and saturated soils. This created standing water issues for plants and preventing farmers from timely tending of fields. A freeze in mid-April may have caused some minor, localized damage but it mostly slowed down the rapid pace of the crop, which had rocketed through its growth cycles after a mild winter and warm spring. As shown in the charts, the shift away from rapeseed area by French farmers since the ban of neonicotinoids in May 2018, remains apparent in the area, yield, and production totals of later years.



For country-specific area, yield, and production estimates within the EU, please go to USDA PSD Online at <https://apps.fas.usda.gov/PSDOnline/app/index.html#/app/home>, and select “Downloadable Data Sets.” Select the zipped file for “EU Countries Area & Production.” (For more information, please contact Bryan.Purcell@usda.gov.)

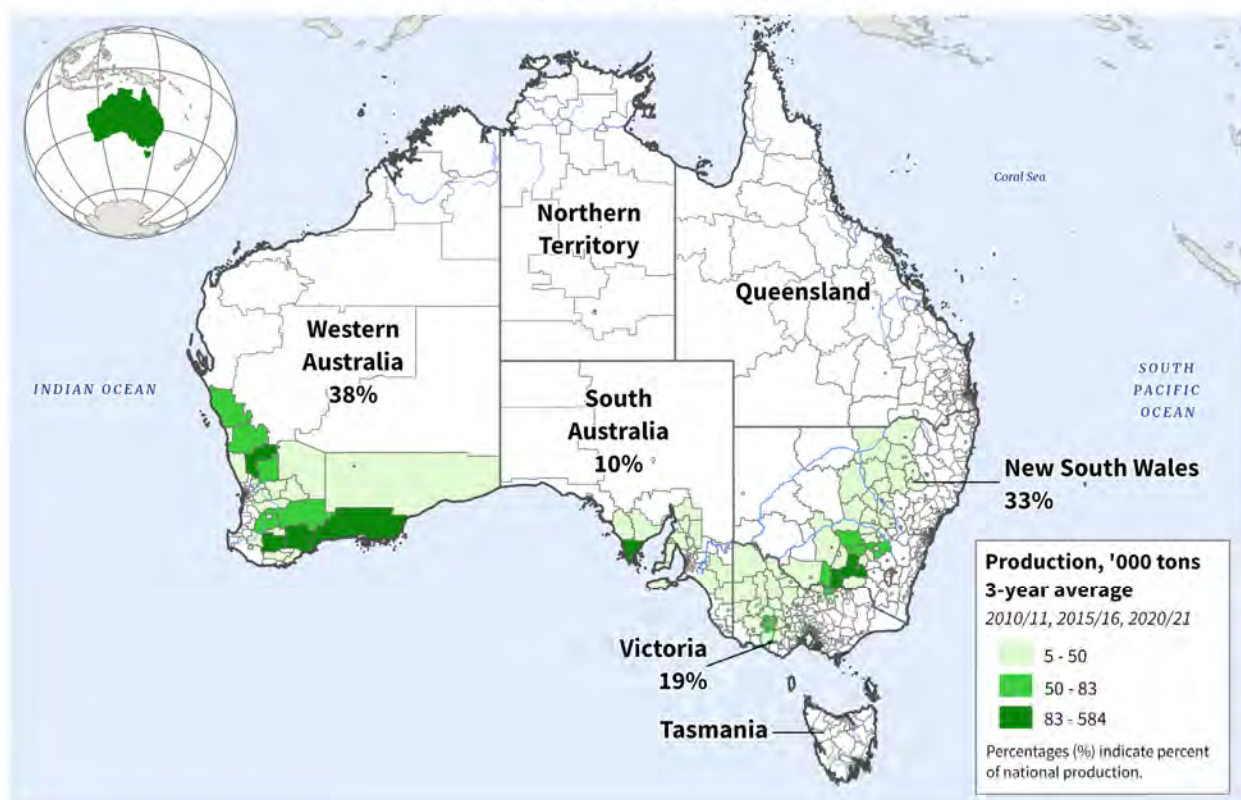
Australia Rapeseed: Production Revised Down



Australia rapeseed production for marketing year 2024/25 is forecast at 5.5 million metric tons (mmt), down 1.0 mmt or 15 percent from last month, and down 0.2 mmt or 4 percent from last year. Harvested area is forecast at 3.2 million hectares (mha), down 0.6 mha from last month and

down 0.3 mha or 9 percent from last year. Yield is forecast at 1.72 tons per hectare (t/ha), up 1 percent from last month, and up 6 percent from last year.

Australia: Rapeseed Production



Harvested area is revised lower in conjunction with the latest information from the Australian Bureau of Agricultural and Resource Economics and Sciences (ABARES). The lower area estimate reflects a less favorable start to the season in major cropping areas. Other crops, including barley and pulses, may increase in planted area due to the lower expected returns for rapeseed.

Rapeseed sowing commenced in April and continued through May. Rapeseed production is distributed across the four main agricultural producing states. Western Australia produces the largest portion of Australia’s rapeseed with 38 percent (3-year average) and the remaining production is split among New South Wales (33 percent), Victoria (19 percent) and South Australia (10 percent). (For more information, please contact James.Crutchfield@usda.gov.)



**World Agricultural Production
U.S. Department of Agriculture**

Foreign Agricultural Service / Global Market Analysis
International Production Assessment Division (IPAD)
Ag Box 1051, Room 4630, South Building
Washington, DC 20250-1051

<https://ipad.fas.usda.gov/>

Telephone: (202) 720-1662 Fax: (202) 720-1158

This report uses information from the Foreign Agricultural Service's (FAS) global network of agricultural attachés and counselors, official statistics of foreign governments and other foreign source materials, and the analysis of economic data and satellite imagery. Estimates of foreign area, yield, and production are from the International Production Assessment Division, FAS, and are reviewed by USDA's Inter-Agency Commodity Estimates Committee. Estimates of U.S. area, yield, and production are from USDA's National Agricultural Statistics Service. Numbers within the report may not add to totals because of rounding. This report reflects official USDA estimates released in the World Agricultural Supply and Demand Estimates (WASDE-584), June 12, 2024.

Printed copies are available from the National Technical Information Service. Download an order form at http://www.ntis.gov/products/specialty/usda/fas_a-g.asp, or call NTIS at 1-800-363-2068.

The FAS International Production Assessment Division prepared this report. The next issue of World Agricultural Production will be released after 12:00 p.m. Eastern Time, July 12, 2024.

Conversion Table

Metric tons to bushels

| | | |
|--------------------|---|----------------|
| Wheat, soybeans | = | MT * 36.7437 |
| Corn, sorghum, rye | = | MT * 39.36825 |
| Barley | = | MT * 45.929625 |
| Oats | = | MT * 68.894438 |

Metric tons to 480-lb bales

| | | |
|--------|---|---------------|
| Cotton | = | MT * 4.592917 |
|--------|---|---------------|

Metric tons to hundredweight

| | | |
|------|---|---------------|
| Rice | = | MT * 22.04622 |
|------|---|---------------|

Area & weight

| | | |
|------------|---|-----------------|
| 1 hectare | = | 2.471044 acres |
| 1 kilogram | = | 2.204622 pounds |



For further information, contact:
U.S. Department of Agriculture
Foreign Agricultural Service
Global Market Analysis

International Production Assessment Division
 Ag Box 1051, Room 4630, South Building
 Washington, DC 20250-1051

Telephone: (202) 720-1662

Fax: (202) 720-1158

GENERAL INFORMATION

| | | | |
|---------------------------------|----------------------|--------------|----------------------------|
| Senior Director | Ronald Frantz | 202-720-4056 | ronald.frantz@usda.gov |
| Director | Robert Tetrault | 202-720-1071 | robert.tetrault@usda.gov |
| USDA Remote Sensing Advisor | Vacant | | |
| Sr. Analyst/Technical Lead | Curt Reynolds, Ph.D. | 202-690-0134 | curt.reynolds@usda.gov |
| Sr. Analyst/ Satellite Imagery | Dath Mita, Ph.D. | 202-720-7339 | dath.mita@usda.gov |
| Archives Manager/Technical Lead | | | |
| Sr. Analyst/Technical Lead | Jim Crutchfield | 202-690-0135 | james.crutchfield@usda.gov |
| GIS Mapping/Imagery Analyst | Lisa Colson | 202-720-6652 | lisa.colson@usda.gov |
| WAP Coordinators | Shannon Moyo | 771-221-5973 | shannon.moyo@usda.gov |
| | Vacant | | |

ANALYSIS REGIONS

ANALYST

CONTACT INFORMATION

| | | | |
|---|-------------------------|--------------|----------------------------|
| Brazil | Aaron Mulhollen | 202-690-0131 | aaron.mulhollen@usda.gov |
| South America (except Brazil) | Katie McGaughey | 202-720-9210 | katie.mcgaughey@usda.gov |
| Europe, North Africa, and Middle East | Bryan Purcell | 202-690-0138 | bryan.purcell@usda.gov |
| India and South Asia | Arnella Trent | 202-720-0881 | arnella.trent@usda.gov |
| China and East Asia | Dath Mita, Ph.D. | 202-720-7339 | dath.mita@usda.gov |
| South Africa and Sub-Saharan Africa | Curt Reynolds, Ph.D. | 202-690-0134 | curt.reynolds@usda.gov |
| Indonesia and South East Asia | Justin Jenkins | 202-720-0419 | justin.jenkins@usda.gov |
| Mexico and Central America | Lisa Colson | 202-720-6652 | lisa.colson@usda.gov |
| Australia, Pakistan, and Central Asia | Jim Crutchfield | 202-690-0135 | james.crutchfield@usda.gov |
| Canada and the Caribbean | Shannon Moyo | 771-221-5973 | shannon.moyo@usda.gov |
| Russia, Ukraine, Kazakhstan, Moldova, and Belarus | Iliana Mladenova, Ph.D. | 202-690-2315 | iliana.mladenova@usda.gov |



The Foreign Agricultural Service (FAS) updates its production, supply and distribution (PSD) database for cotton, oilseeds, and grains at 12:00 p.m. on the day the *World Agricultural Supply and Demand Estimates* (WASDE) report is released. This circular is released by 12:15 p.m.

FAS Reports and Databases:

World Agricultural Production

Current: <https://www.fas.usda.gov/data/world-agricultural-production>

Archive: <https://usda.library.cornell.edu/concern/publications/5q47rn72z?locale=en>

USDA's Foreign Agricultural Service (FAS) publishes a monthly report on crop acreage, yield and production in major countries worldwide. Sources include reporting from FAS's worldwide offices, official statistics of foreign governments, and analysis of economic data and satellite imagery. The reports reflect official USDA estimates released in the monthly *World Agricultural Supply and Demand Estimates* (WASDE).

World Markets and Trade

Current: <https://www.fas.usda.gov/data>

Archive:

https://usda.library.cornell.edu/catalog?f%5Bmember_of_collections_ssim%5D%5B%5D=Foreign+Agricultural+Service&locale=en

USDA's Foreign Agricultural Service (FAS) publishes monthly and quarterly reports which include data on U.S. and global trade, production, consumption and stocks, as well as analysis of developments affecting world trade in oilseeds, grains, cotton, livestock and poultry. The reports reflect official USDA estimates released in the monthly *World Agricultural Supply and Demand Estimates* (WASDE).

Global Agricultural Information Network (GAIN)

<https://gain.fas.usda.gov/>

USDA's Foreign Agricultural Service (FAS) provides timely reports on foreign markets through the Global Agriculture Information Network (GAIN) database. An average of 2,000 reports are added each year, with reports going back to 1995. GAIN reports are compiled by FAS' global market intelligence network, which includes FAS foreign service officers and locally engaged staff in over 90 overseas offices world-wide. They provide on-the-ground intelligence, insight, and analysis on nearly 200 countries, delivering information on foreign agricultural markets, crop conditions, and agro-political dynamics of interest to U.S. agriculture. GAIN reports contain assessments of commodity and trade issues made by USDA staff and are not necessarily statements of official U.S. government policy.

Production, Supply and Distribution (PS&D) Online

<https://apps.fas.usda.gov/psdonline/app/index.html#/app/home>

PSD Online is the public repository for USDA's Official Production, Supply and Distribution forecast data and reports for key agricultural commodities. PSD Online data are reviewed and updated monthly by an interagency committee chaired by USDA's World Agricultural Outlook Board (WAOB). The committee consist of representatives from Foreign Agricultural Service (FAS), the Economic Research Service (ERS), the Farm Service Agency (FSA), and the Agricultural Marketing Service (AMS).

EU Countries and Russia Wheat: Area and Production Estimates

<https://apps.fas.usda.gov/psdonline/app/index.html#/app/downloads> (click on PSD Datasets)

USDA's Foreign Agricultural Service (FAS) provides country-level area and production estimates for the nations of the European Union. For Russia, country-level area and production estimates are provided for Winter and Spring wheat. These datasets are reviewed and updated monthly by an interagency committee chaired by USDA's World Agricultural Outlook Board (WAOB) and can be downloaded through PSD datasets on PSD Online.



FAS Reports and Databases:

International Production Assessment (IPAD)

<https://ipad.fas.usda.gov/>

USDA's Foreign Agricultural Service (FAS) maintains a dynamic global crop production portal with key information including *World Agricultural Production* (WAP) briefs, Commodity Intelligence Reports (CIR), geospatial applications, crop production maps at a subnational level and crop calendars for the top-20 producing countries. Additionally, Crop Explorer (<https://ipad.fas.usda.gov/cropexplorer/>) displays rainfall, temperature, evapotranspiration, soil moisture, snow cover, and vegetation conditions in charts and maps.

USDA and NASA Global Agricultural Monitoring (GLAM)

<https://glam1.gsfc.nasa.gov/>

The USDA and NASA Global Agricultural Monitoring (GLAM) system provides near real-time and science quality Moderate Resolution Imaging Spectroradiometer (MODIS) Normalized Difference Vegetation Index (NDVI) from the satellites Terra and Aqua. The public can view and retrieve MODIS 8-day composited, global NDVI satellite imagery and time series data. GLAM was developed by NASA's Global Inventory Modeling and Mapping Studies (GIMMS) group for USDA's Foreign Agricultural Service.

Global Agricultural and Disaster Assessment System (GADAS)

<https://geo.fas.usda.gov/GADAS/index.html>

USDA's Foreign Agricultural Service (FAS) provides the Global Agricultural and Disaster Assessment System (GADAS), a web-based Geographic Information System (GIS) tool which integrates a vast array of highly detailed earth observation data streams, particularly targeted towards agricultural and disaster assessment analysis. GADAS is an interactive website which provides analysts with a wide variety of routine geospatial products (maps, charts, tables) they require for comprehensive situational investigations and recurring assessments.

Export Sales Reporting

<https://apps.fas.usda.gov/esrquery/>

USDA's Export Sales Reporting Program monitors U.S. agricultural export sales on a daily and weekly basis. Export sales reporting provides a constant stream of up-to-date market information for 40 U.S. agricultural commodities sold abroad. The weekly U.S. Export Sales report is the most currently available source of U.S. exports sales data. The data is used to analyze overall levels of export demand, determine where markets exit, and assess the relative position of U.S. commodities in foreign markets.

Global Agricultural Trade System (GATS)

<https://apps.fas.usda.gov/gats/default.aspx>

The Global Agricultural Trade System (GATS) is a searchable database containing monthly U.S. Census Bureau trade data organized by agricultural commodity and agricultural related product groups. Trade data is searchable by partner countries and partner groups. Historical U.S. agricultural trade data is available back to 1967. In addition, U.N. trade statistics (UN Comtrade) may be queried through GATS. UN trade data is available for nearly 200 countries or areas, dating from the inception of the Harmonized System (HS) of trade codes in 1989 to present. The database is continuously updated. U.S. trade data is updated monthly according to the U.S. Census Bureau's reporting system. UN Comtrade data are updated in GATS after nationally submitted data to the UN are standardized by the UN Statistical Division and added to the UN Comtrade database.

Other USDA Reports:

World Agricultural Supply and Demand Estimates (WASDE):

<http://www.usda.gov/oce/commodity/wasde/>

Economic Research Service:

<http://www.ers.usda.gov/topics/crops>

National Agricultural Statistics Service:

<http://www.nass.usda.gov/Publications/>

Table 01 World Crop Production Summary

Million Metric Tons

| Commodity | World - | Total Foreign | North America | | | Former Soviet | | European | Asia (WAP) | | | | | South America | | Selected Other | | | All Others |
|---------------------------|---------|---------------|---------------|----------|----------|---------------|-----------|----------|------------|---------|-----------|----------|----------|---------------|----------|----------------|--------------|----------|------------|
| | | | United States | Canada - | Mexico - | Russia - | Ukraine - | | China - | India - | Indonesia | Pakistan | Thailand | Argentina | Brazil - | Australia | South Africa | Turkey - | |
| ---Million metric tons--- | | | | | | | | | | | | | | | | | | | |
| Wheat | | | | | | | | | | | | | | | | | | | |
| 2022/23 | 789.2 | 744.3 | 44.9 | 34.3 | 3.6 | 92.0 | 21.5 | nr | 137.7 | 104.0 | 0.0 | 26.4 | 0.0 | 12.6 | 10.6 | 40.5 | 2.1 | 17.3 | 241.7 |
| 2023/24 prel. | 787.6 | 738.3 | 49.3 | 32.0 | 3.1 | 91.5 | 23.0 | nr | 136.6 | 110.6 | 0.0 | 28.2 | 0.0 | 15.9 | 8.1 | 26.0 | 2.1 | 20.0 | 241.4 |
| 2024/25 proj. | | | | | | | | | | | | | | | | | | | |
| May | 798.2 | 747.6 | 50.6 | 34.0 | 3.4 | 88.0 | 21.0 | nr | 140.0 | 114.0 | 0.0 | 30.0 | 0.0 | 17.0 | 9.5 | 29.0 | 2.1 | 19.0 | 240.6 |
| Jun | 790.8 | 739.7 | 51.0 | 34.0 | 3.4 | 83.0 | 19.5 | nr | 140.0 | 114.0 | 0.0 | 30.0 | 0.0 | 17.5 | 9.5 | 29.0 | 2.1 | 19.0 | 238.7 |
| Coarse Grains | | | | | | | | | | | | | | | | | | | |
| 2022/23 | 1,449.9 | 1,093.5 | 356.4 | 30.5 | 33.9 | 44.1 | 33.9 | nr | 285.7 | 56.8 | 12.4 | 9.9 | 5.3 | 42.9 | 143.5 | 18.8 | 17.5 | 14.8 | 343.4 |
| 2023/24 prel. | 1,502.4 | 1,099.6 | 402.9 | 27.2 | 28.4 | 42.5 | 38.3 | nr | 297.1 | 56.0 | 12.7 | 11.0 | 5.4 | 61.4 | 128.1 | 14.5 | 14.5 | 17.0 | 345.3 |
| 2024/25 proj. | | | | | | | | | | | | | | | | | | | |
| May | 1,512.6 | 1,120.8 | 391.8 | 28.7 | 30.4 | 41.5 | 33.0 | nr | 300.3 | 56.7 | 13.2 | 10.0 | 5.5 | 60.0 | 133.8 | 14.9 | 17.5 | 15.1 | 360.5 |
| Jun | 1,511.2 | 1,119.4 | 391.8 | 28.7 | 30.4 | 40.4 | 33.5 | nr | 300.3 | 56.0 | 13.2 | 10.0 | 5.5 | 59.5 | 133.8 | 15.4 | 17.5 | 15.1 | 360.3 |
| Rice, Milled | | | | | | | | | | | | | | | | | | | |
| 2022/23 | 515.8 | 510.7 | 5.1 | 0.0 | 0.1 | 0.6 | 0.0 | nr | 145.9 | 135.8 | 33.9 | 7.3 | 20.9 | 0.8 | 6.8 | 0.4 | 0.0 | 0.6 | 157.6 |
| 2023/24 prel. | 520.0 | 513.1 | 6.9 | 0.0 | 0.2 | 0.7 | 0.0 | nr | 144.6 | 137.0 | 33.0 | 9.0 | 20.0 | 0.9 | 7.0 | 0.4 | 0.0 | 0.5 | 159.8 |
| 2024/25 proj. | | | | | | | | | | | | | | | | | | | |
| May | 527.6 | 520.6 | 7.0 | 0.0 | 0.2 | 0.7 | 0.0 | nr | 146.0 | 138.0 | 34.0 | 9.5 | 20.1 | 0.9 | 7.5 | 0.5 | 0.0 | 0.6 | 162.7 |
| Jun | 527.6 | 520.6 | 7.0 | 0.0 | 0.2 | 0.7 | 0.0 | nr | 146.0 | 138.0 | 34.0 | 9.5 | 20.1 | 0.9 | 7.5 | 0.5 | 0.0 | 0.6 | 162.7 |
| Total Grains | | | | | | | | | | | | | | | | | | | |
| 2022/23 | 2,754.9 | 2,348.5 | 406.4 | 64.9 | 37.6 | 136.7 | 55.4 | nr | 569.4 | 296.5 | 46.3 | 43.6 | 26.2 | 56.2 | 160.9 | 59.8 | 19.6 | 32.7 | 742.7 |
| 2023/24 prel. | 2,810.0 | 2,350.9 | 459.1 | 59.1 | 31.7 | 134.7 | 61.3 | nr | 578.4 | 303.6 | 45.7 | 48.2 | 25.4 | 78.1 | 143.2 | 40.9 | 16.6 | 37.6 | 746.5 |
| 2024/25 proj. | | | | | | | | | | | | | | | | | | | |
| May | 2,838.4 | 2,389.1 | 449.3 | 62.7 | 33.9 | 130.2 | 54.0 | nr | 586.3 | 308.7 | 47.2 | 49.5 | 25.6 | 77.9 | 150.8 | 44.3 | 19.6 | 34.6 | 763.8 |
| Jun | 2,829.6 | 2,379.8 | 449.8 | 62.7 | 33.9 | 124.1 | 53.0 | nr | 586.3 | 308.0 | 47.2 | 49.5 | 25.6 | 77.9 | 150.8 | 44.8 | 19.6 | 34.6 | 761.7 |
| Oilseeds | | | | | | | | | | | | | | | | | | | |
| 2022/23 | 637.9 | 512.1 | 125.8 | 25.3 | 0.9 | 26.6 | 19.8 | nr | 67.9 | 42.4 | 15.0 | 2.7 | 1.0 | 31.5 | 166.9 | 9.8 | 3.8 | 4.0 | 94.6 |
| 2023/24 prel. | 656.8 | 534.6 | 122.2 | 25.9 | 0.6 | 28.1 | 24.5 | nr | 67.3 | 42.6 | 15.1 | 3.7 | 1.0 | 56.1 | 158.9 | 7.0 | 2.8 | 3.1 | 97.9 |
| 2024/25 proj. | | | | | | | | | | | | | | | | | | | |
| May | 687.1 | 555.9 | 131.2 | 26.4 | 0.6 | 28.1 | 23.9 | nr | 67.5 | 43.1 | 15.1 | 3.5 | 1.0 | 56.8 | 175.7 | 7.8 | 3.9 | 3.5 | 99.1 |
| Jun | 685.8 | 554.6 | 131.2 | 26.4 | 0.6 | 28.1 | 23.9 | nr | 67.5 | 43.1 | 15.1 | 3.5 | 1.0 | 56.8 | 175.7 | 6.8 | 3.9 | 3.5 | 98.8 |
| Cotton | | | | | | | | | | | | | | | | | | | |
| 2022/23 | 116.4 | 101.9 | 14.5 | 0.0 | 1.6 | 0.0 | 0.0 | 1.6 | 30.7 | 26.3 | 0.0 | 3.9 | 0.0 | 1.2 | 11.7 | 5.8 | 0.1 | 4.9 | 14.2 |
| 2023/24 prel. | 113.8 | 101.7 | 12.1 | 0.0 | 0.9 | 0.0 | 0.0 | 1.1 | 27.5 | 26.2 | 0.0 | 6.7 | 0.0 | 1.6 | 14.6 | 5.0 | 0.1 | 3.2 | 15.0 |
| 2024/25 proj. | | | | | | | | | | | | | | | | | | | |
| May | 119.0 | 103.0 | 16.0 | 0.0 | 0.8 | 0.0 | 0.0 | 1.4 | 27.0 | 25.0 | 0.0 | 6.5 | 0.0 | 1.6 | 16.7 | 5.0 | 0.1 | 4.0 | 15.1 |
| Jun | 119.1 | 103.1 | 16.0 | 0.0 | 0.8 | 0.0 | 0.0 | 1.4 | 27.0 | 25.0 | 0.0 | 6.5 | 0.0 | 1.6 | 16.7 | 5.0 | 0.1 | 4.0 | 15.2 |

1/ Includes wheat, coarse grains, and rice (milled) shown above.

Table 02 Wheat Area, Yield, and Production

| Country / Region | Area (Million hectares) | | | | Yield (Metric tons per hectare) | | | | Production (Million metric tons) | | | | Change in Production | | | | | | |
|---------------------------------|----------------------------|---------|--------|---------------|------------------------------------|---------|-------|------|-------------------------------------|--------|---------|--------|----------------------|---------------|-------|-----------------|--|----------------|--|
| | 2022/23 | Prel. | | 2024/25 Proj. | | 2022/23 | Prel. | | 2024/25 Proj. | | 2022/23 | Prel. | | 2024/25 Proj. | | From last month | | From last year | |
| | | 2023/24 | May | Jun | 2023/24 | | May | Jun | 2023/24 | May | | Jun | MMT | Percent | MMT | Percent | | | |
| World | 219.59 | 222.72 | 222.60 | 221.80 | 3.59 | 3.54 | 3.59 | 3.57 | 789.20 | 787.59 | 798.19 | 790.75 | -7.43 | -0.93 | 3.16 | 0.40 | | | |
| United States | 14.36 | 15.08 | 15.37 | 15.37 | 3.13 | 3.27 | 3.29 | 3.32 | 44.90 | 49.31 | 50.56 | 51.02 | 0.47 | 0.92 | 1.71 | 3.47 | | | |
| Total Foreign | 205.23 | 207.64 | 207.23 | 206.43 | 3.63 | 3.56 | 3.61 | 3.58 | 744.30 | 738.28 | 747.63 | 739.73 | -7.90 | -1.06 | 1.45 | 0.20 | | | |
| European Union | 24.40 | 24.20 | 23.40 | 23.40 | 5.50 | 5.54 | 5.64 | 5.58 | 134.29 | 134.15 | 132.00 | 130.50 | -1.50 | -1.14 | -3.65 | -2.72 | | | |
| United Kingdom | 1.81 | 1.72 | 1.40 | 1.40 | 8.57 | 8.13 | 8.00 | 7.75 | 15.54 | 13.98 | 11.20 | 10.85 | -0.35 | -3.13 | -3.13 | -22.39 | | | |
| Serbia | 0.62 | 0.73 | 0.63 | 0.63 | 5.32 | 4.69 | 4.80 | 4.80 | 3.30 | 3.40 | 3.00 | 3.00 | 0.00 | 0.00 | -0.40 | -11.76 | | | |
| China | 23.52 | 23.63 | 23.70 | 23.70 | 5.86 | 5.78 | 5.91 | 5.91 | 137.72 | 136.59 | 140.00 | 140.00 | 0.00 | 0.00 | 3.41 | 2.50 | | | |
| South Asia | | | | | | | | | | | | | | | | | | | |
| India | 30.46 | 31.40 | 32.00 | 31.30 | 3.41 | 3.52 | 3.56 | 3.64 | 104.00 | 110.55 | 114.00 | 114.00 | 0.00 | 0.00 | 3.45 | 3.12 | | | |
| Pakistan | 9.00 | 9.04 | 9.60 | 9.60 | 2.93 | 3.12 | 3.13 | 3.13 | 26.40 | 28.18 | 30.00 | 30.00 | 0.00 | 0.00 | 1.82 | 6.47 | | | |
| Afghanistan | 1.86 | 2.35 | 2.30 | 2.30 | 2.05 | 2.20 | 2.26 | 2.26 | 3.80 | 5.17 | 5.20 | 5.20 | 0.00 | 0.00 | 0.03 | 0.58 | | | |
| Nepal | 0.72 | 0.72 | 0.72 | 0.72 | 2.98 | 2.90 | 2.90 | 2.90 | 2.15 | 2.09 | 2.09 | 2.09 | 0.00 | 0.00 | 0.00 | 0.00 | | | |
| Former Soviet Union - 12 | | | | | | | | | | | | | | | | | | | |
| Russia | 29.00 | 28.83 | 28.50 | 28.10 | 3.17 | 3.17 | 3.09 | 2.95 | 92.00 | 91.50 | 88.00 | 83.00 | -5.00 | -5.68 | -8.50 | -9.29 | | | |
| Russia Winter | 16.30 | 15.27 | 16.00 | 15.60 | 4.17 | 4.19 | 4.00 | 3.78 | 68.00 | 64.00 | 64.00 | 59.00 | -5.00 | -7.81 | -5.00 | -7.81 | | | |
| Russia Spring | 12.70 | 13.56 | 12.50 | 12.50 | 1.89 | 2.03 | 1.92 | 1.92 | 24.00 | 27.50 | 24.00 | 24.00 | 0.00 | 0.00 | -3.50 | -12.73 | | | |
| Ukraine | 5.60 | 5.01 | 4.70 | 4.70 | 3.84 | 4.59 | 4.47 | 4.15 | 21.50 | 23.00 | 21.00 | 19.50 | -1.50 | -7.14 | -3.50 | -15.22 | | | |
| Kazakhstan | 12.81 | 13.13 | 13.20 | 13.20 | 1.28 | 0.92 | 1.10 | 1.10 | 16.40 | 12.11 | 14.50 | 14.50 | 0.00 | 0.00 | 2.39 | 19.73 | | | |
| Uzbekistan | 1.26 | 1.40 | 1.30 | 1.30 | 4.99 | 4.62 | 5.15 | 5.15 | 6.27 | 6.46 | 6.70 | 6.70 | 0.00 | 0.00 | 0.24 | 3.68 | | | |
| Belarus | 0.68 | 0.68 | 0.69 | 0.69 | 3.48 | 3.38 | 3.80 | 3.80 | 2.35 | 2.30 | 2.60 | 2.60 | 0.00 | 0.00 | 0.30 | 13.04 | | | |
| Canada | 10.08 | 10.68 | 10.70 | 10.70 | 3.41 | 2.99 | 3.18 | 3.18 | 34.34 | 31.95 | 34.00 | 34.00 | 0.00 | 0.00 | 2.05 | 6.40 | | | |
| South America | | | | | | | | | | | | | | | | | | | |
| Argentina | 5.50 | 5.58 | 5.50 | 5.80 | 2.28 | 2.84 | 3.09 | 3.02 | 12.55 | 15.85 | 17.00 | 17.50 | 0.50 | 2.94 | 1.65 | 10.41 | | | |
| Brazil | 3.09 | 3.47 | 3.50 | 3.50 | 3.42 | 2.33 | 2.71 | 2.71 | 10.55 | 8.10 | 9.50 | 9.50 | 0.00 | 0.00 | 1.40 | 17.28 | | | |
| Australia | 13.05 | 12.50 | 12.50 | 12.50 | 3.11 | 2.08 | 2.32 | 2.32 | 40.55 | 26.00 | 29.00 | 29.00 | 0.00 | 0.00 | 3.00 | 11.54 | | | |
| Africa | | | | | | | | | | | | | | | | | | | |
| Egypt | 1.45 | 1.35 | 1.40 | 1.40 | 6.55 | 6.57 | 6.57 | 6.57 | 9.50 | 8.87 | 9.20 | 9.20 | 0.00 | 0.00 | 0.33 | 3.72 | | | |
| Morocco | 2.44 | 2.50 | 2.20 | 2.20 | 1.11 | 1.66 | 1.14 | 1.14 | 2.71 | 4.16 | 2.50 | 2.50 | 0.00 | 0.00 | -1.66 | -39.90 | | | |
| Algeria | 1.80 | 1.80 | 1.80 | 1.80 | 2.00 | 1.50 | 1.67 | 1.67 | 3.60 | 2.70 | 3.00 | 3.00 | 0.00 | 0.00 | 0.30 | 11.11 | | | |
| Ethiopia | 1.90 | 1.86 | 1.90 | 1.90 | 3.05 | 3.01 | 3.00 | 3.00 | 5.80 | 5.60 | 5.70 | 5.70 | 0.00 | 0.00 | 0.10 | 1.79 | | | |
| Middle East | | | | | | | | | | | | | | | | | | | |
| Turkey | 6.80 | 7.20 | 7.25 | 7.25 | 2.54 | 2.78 | 2.62 | 2.62 | 17.25 | 20.00 | 19.00 | 19.00 | 0.00 | 0.00 | -1.00 | -5.00 | | | |
| Iran | 6.20 | 6.20 | 6.20 | 6.20 | 2.13 | 2.26 | 2.34 | 2.34 | 13.20 | 14.00 | 14.50 | 14.50 | 0.00 | 0.00 | 0.50 | 3.57 | | | |
| Iraq | 2.10 | 2.60 | 2.70 | 2.70 | 1.52 | 2.00 | 2.11 | 2.11 | 3.20 | 5.20 | 5.70 | 5.70 | 0.00 | 0.00 | 0.50 | 9.62 | | | |
| Syria | 1.18 | 1.20 | 1.30 | 1.30 | 1.31 | 2.00 | 2.15 | 2.15 | 1.55 | 2.40 | 2.80 | 2.80 | 0.00 | 0.00 | 0.40 | 16.67 | | | |
| Mexico | 0.59 | 0.50 | 0.56 | 0.56 | 6.14 | 6.20 | 6.07 | 6.07 | 3.61 | 3.10 | 3.40 | 3.40 | 0.00 | 0.00 | 0.30 | 9.68 | | | |
| Others | 7.33 | 7.37 | 7.59 | 7.59 | 2.75 | 2.83 | 2.90 | 2.90 | 20.17 | 20.86 | 22.04 | 21.99 | -0.05 | -0.23 | 1.13 | 5.40 | | | |

Table 03 Total Coarse Grain Area, Yield, and Production

| Country / Region | Area (Million hectares) | | | | Yield (Metric tons per hectare) | | | | Production (Million metric tons) | | | | Change in Production | | | |
|---------------------------------|----------------------------|---------|---------------|--------|------------------------------------|---------|---------------|-------|-------------------------------------|----------|---------------|----------|----------------------|---------|----------------|---------|
| | Prel. | | 2024/25 Proj. | | Prel. | | 2024/25 Proj. | | Prel. | | 2024/25 Proj. | | From last month | | From last year | |
| | 2022/23 | 2023/24 | May | Jun | 2022/23 | 2023/24 | May | Jun | 2022/23 | 2023/24 | May | Jun | MMT | Percent | MMT | Percent |
| World | 336.23 | 336.80 | 336.75 | 336.17 | 4.31 | 4.46 | 4.49 | 4.50 | 1,449.90 | 1,502.44 | 1,512.62 | 1,511.18 | -1.43 | -0.09 | 8.74 | 0.58 |
| United States | 35.18 | 38.99 | 36.75 | 36.75 | 10.13 | 10.33 | 10.66 | 10.66 | 356.45 | 402.89 | 391.77 | 391.77 | 0.00 | 0.00 | -11.12 | -2.76 |
| Total Foreign | 301.05 | 297.81 | 300.01 | 299.43 | 3.63 | 3.69 | 3.74 | 3.74 | 1,093.45 | 1,099.56 | 1,120.85 | 1,119.41 | -1.43 | -0.13 | 19.86 | 1.81 |
| China | 45.55 | 46.65 | 47.14 | 47.14 | 6.27 | 6.37 | 6.37 | 6.37 | 285.70 | 297.14 | 300.30 | 300.30 | 0.00 | 0.00 | 3.16 | 1.06 |
| European Union | 26.58 | 25.97 | 26.66 | 26.56 | 5.00 | 5.24 | 5.56 | 5.55 | 132.96 | 135.96 | 148.19 | 147.49 | -0.70 | -0.47 | 11.53 | 8.48 |
| United Kingdom | 1.37 | 1.38 | 1.47 | 1.47 | 6.33 | 5.87 | 5.92 | 5.92 | 8.67 | 8.08 | 8.73 | 8.73 | 0.00 | 0.00 | 0.65 | 8.01 |
| South America | | | | | | | | | | | | | | | | |
| Brazil | 24.45 | 23.70 | 24.56 | 24.56 | 5.87 | 5.41 | 5.45 | 5.45 | 143.49 | 128.15 | 133.76 | 133.76 | 0.00 | 0.00 | 5.61 | 4.38 |
| Argentina | 9.21 | 9.28 | 8.91 | 8.76 | 4.66 | 6.61 | 6.73 | 6.79 | 42.91 | 61.38 | 59.99 | 59.49 | -0.50 | -0.83 | -1.89 | -3.08 |
| Former Soviet Union - 12 | | | | | | | | | | | | | | | | |
| Russia | 13.60 | 12.88 | 13.28 | 12.98 | 3.25 | 3.30 | 3.13 | 3.11 | 44.13 | 42.54 | 41.53 | 40.43 | -1.10 | -2.65 | -2.11 | -4.96 |
| Ukraine | 6.32 | 6.04 | 5.62 | 5.72 | 5.37 | 6.34 | 5.87 | 5.86 | 33.93 | 38.28 | 32.97 | 33.47 | 0.50 | 1.52 | -4.81 | -12.57 |
| Kazakhstan | 2.63 | 2.87 | 2.96 | 2.96 | 1.79 | 1.40 | 1.50 | 1.50 | 4.71 | 4.01 | 4.43 | 4.43 | 0.00 | 0.00 | 0.42 | 10.58 |
| Belarus | 1.03 | 1.05 | 1.12 | 1.12 | 3.11 | 3.09 | 3.21 | 3.21 | 3.20 | 3.23 | 3.58 | 3.58 | 0.00 | 0.00 | 0.35 | 10.84 |
| Africa | | | | | | | | | | | | | | | | |
| Nigeria | 13.50 | 13.40 | 13.10 | 13.10 | 1.61 | 1.42 | 1.53 | 1.53 | 21.70 | 19.01 | 20.10 | 20.10 | 0.00 | 0.00 | 1.09 | 5.72 |
| South Africa | 3.13 | 3.20 | 3.34 | 3.34 | 5.61 | 4.54 | 5.25 | 5.25 | 17.53 | 14.51 | 17.53 | 17.53 | 0.00 | 0.00 | 3.02 | 20.83 |
| Tanzania | 5.30 | 5.50 | 5.50 | 5.50 | 1.36 | 1.40 | 1.51 | 1.51 | 7.23 | 7.73 | 8.33 | 8.33 | 0.00 | 0.00 | 0.60 | 7.77 |
| Burkina Faso | 4.09 | 4.20 | 4.20 | 4.20 | 1.16 | 1.10 | 1.13 | 1.13 | 4.73 | 4.63 | 4.75 | 4.75 | 0.00 | 0.00 | 0.12 | 2.64 |
| Ethiopia | 5.45 | 5.41 | 5.64 | 5.64 | 3.21 | 3.25 | 3.18 | 3.18 | 17.47 | 17.56 | 17.91 | 17.91 | 0.00 | 0.00 | 0.35 | 1.99 |
| Egypt | 1.10 | 1.12 | 1.14 | 1.14 | 7.52 | 7.19 | 7.43 | 7.43 | 8.28 | 8.07 | 8.48 | 8.48 | 0.00 | 0.00 | 0.41 | 5.08 |
| Mali | 5.20 | 4.80 | 4.90 | 4.90 | 1.38 | 1.43 | 1.43 | 1.43 | 7.15 | 6.86 | 7.00 | 7.00 | 0.00 | 0.00 | 0.14 | 2.07 |
| India | 23.90 | 25.23 | 24.52 | 24.30 | 2.38 | 2.22 | 2.31 | 2.30 | 56.78 | 56.01 | 56.65 | 56.00 | -0.65 | -1.15 | -0.01 | -0.02 |
| Southeast Asia | | | | | | | | | | | | | | | | |
| Indonesia | 3.50 | 3.70 | 3.80 | 3.80 | 3.54 | 3.43 | 3.47 | 3.47 | 12.40 | 12.70 | 13.20 | 13.20 | 0.00 | 0.00 | 0.50 | 3.94 |
| Philippines | 2.54 | 2.60 | 2.60 | 2.60 | 3.28 | 3.27 | 3.27 | 3.27 | 8.32 | 8.50 | 8.50 | 8.50 | 0.00 | 0.00 | 0.00 | 0.00 |
| Vietnam | 0.89 | 0.87 | 0.85 | 0.85 | 4.99 | 5.00 | 5.06 | 5.06 | 4.42 | 4.35 | 4.30 | 4.30 | 0.00 | 0.00 | -0.05 | -1.15 |
| Thailand | 1.21 | 1.25 | 1.26 | 1.26 | 4.35 | 4.29 | 4.34 | 4.34 | 5.25 | 5.35 | 5.45 | 5.45 | 0.00 | 0.00 | 0.10 | 1.87 |
| Mexico | 8.64 | 7.65 | 8.05 | 8.05 | 3.92 | 3.72 | 3.77 | 3.77 | 33.88 | 28.42 | 30.36 | 30.36 | 0.00 | 0.00 | 1.95 | 6.84 |
| Canada | 5.74 | 5.24 | 5.30 | 5.30 | 5.32 | 5.19 | 5.42 | 5.42 | 30.54 | 27.16 | 28.68 | 28.68 | 0.00 | 0.00 | 1.51 | 5.57 |
| Australia | 5.69 | 5.63 | 5.86 | 5.86 | 3.31 | 2.58 | 2.54 | 2.62 | 18.84 | 14.54 | 14.87 | 15.37 | 0.50 | 3.36 | 0.83 | 5.67 |
| Middle East | | | | | | | | | | | | | | | | |
| Turkey | 4.57 | 4.59 | 4.55 | 4.55 | 3.25 | 3.72 | 3.31 | 3.31 | 14.84 | 17.05 | 15.06 | 15.06 | 0.00 | 0.00 | -1.99 | -11.65 |
| Iran | 1.86 | 1.86 | 1.81 | 1.81 | 2.38 | 2.38 | 2.50 | 2.50 | 4.42 | 4.42 | 4.52 | 4.52 | 0.00 | 0.00 | 0.10 | 2.26 |
| Others | 74.04 | 71.76 | 71.90 | 72.00 | 1.62 | 1.73 | 1.69 | 1.70 | 119.99 | 123.93 | 121.69 | 122.20 | 0.52 | 0.42 | -1.72 | -1.39 |

World and Selected Countries and Regions; Coarse Grain includes: Barley, Corn, Millet, Mixed Grains, Oats, Rye and Sorghum

Table 04 Corn Area, Yield, and Production

| Country / Region | Area (Million hectares) | | | | Yield (Metric tons per hectare) | | | | Production (Million metric tons) | | | | Change in Production | | | |
|---------------------------------|----------------------------|---------|---------------|--------|------------------------------------|---------|---------------|-------|-------------------------------------|----------|---------------|----------|----------------------|---------|----------------|---------|
| | Prel. | | 2024/25 Proj. | | Prel. | | 2024/25 Proj. | | Prel. | | 2024/25 Proj. | | From last month | | From last year | |
| | 2022/23 | 2023/24 | May | Jun | 2022/23 | 2023/24 | May | Jun | 2022/23 | 2023/24 | May | Jun | MMT | Percent | MMT | Percent |
| World | 200.61 | 203.25 | 201.17 | 201.25 | 5.77 | 6.04 | 6.06 | 6.06 | 1,157.95 | 1,228.10 | 1,219.93 | 1,220.54 | 0.61 | 0.05 | -7.56 | -0.62 |
| United States | 31.85 | 35.01 | 33.23 | 33.23 | 10.89 | 11.13 | 11.36 | 11.36 | 346.74 | 389.69 | 377.46 | 377.46 | 0.00 | 0.00 | -12.23 | -3.14 |
| Total Foreign | 168.75 | 168.24 | 167.94 | 168.03 | 4.81 | 4.98 | 5.02 | 5.02 | 811.21 | 838.41 | 842.47 | 843.08 | 0.61 | 0.07 | 4.67 | 0.56 |
| China | 43.07 | 44.22 | 44.70 | 44.70 | 6.44 | 6.53 | 6.53 | 6.53 | 277.20 | 288.84 | 292.00 | 292.00 | 0.00 | 0.00 | 3.16 | 1.09 |
| South America | | | | | | | | | | | | | | | | |
| Brazil | 22.40 | 21.50 | 22.30 | 22.30 | 6.12 | 5.67 | 5.70 | 5.70 | 137.00 | 122.00 | 127.00 | 127.00 | 0.00 | 0.00 | 5.00 | 4.10 |
| Argentina | 6.75 | 7.00 | 6.40 | 6.40 | 5.33 | 7.57 | 7.97 | 7.97 | 36.00 | 53.00 | 51.00 | 51.00 | 0.00 | 0.00 | -2.00 | -3.77 |
| Bolivia | 0.44 | 0.43 | 0.42 | 0.42 | 2.52 | 2.62 | 2.56 | 2.56 | 1.10 | 1.13 | 1.08 | 1.08 | 0.00 | 0.00 | -0.05 | -4.44 |
| European Union | 8.85 | 8.28 | 8.65 | 8.65 | 5.91 | 7.37 | 7.49 | 7.49 | 52.29 | 61.00 | 64.80 | 64.80 | 0.00 | 0.00 | 3.80 | 6.23 |
| Africa | | | | | | | | | | | | | | | | |
| South Africa | 2.95 | 3.00 | 3.15 | 3.15 | 5.81 | 4.67 | 5.40 | 5.40 | 17.10 | 14.00 | 17.00 | 17.00 | 0.00 | 0.00 | 3.00 | 21.43 |
| Nigeria | 5.80 | 5.70 | 5.10 | 5.10 | 2.23 | 1.94 | 2.16 | 2.16 | 12.95 | 11.05 | 11.00 | 11.00 | 0.00 | 0.00 | -0.05 | -0.48 |
| Ethiopia | 2.55 | 2.50 | 2.55 | 2.55 | 4.00 | 4.00 | 4.00 | 4.00 | 10.20 | 10.00 | 10.20 | 10.20 | 0.00 | 0.00 | 0.20 | 2.00 |
| Egypt | 0.93 | 0.95 | 0.97 | 0.97 | 8.00 | 7.58 | 7.84 | 7.84 | 7.44 | 7.20 | 7.60 | 7.60 | 0.00 | 0.00 | 0.40 | 5.56 |
| Tanzania | 4.00 | 4.20 | 4.20 | 4.20 | 1.48 | 1.52 | 1.67 | 1.67 | 5.90 | 6.40 | 7.00 | 7.00 | 0.00 | 0.00 | 0.60 | 9.38 |
| Malawi | 1.82 | 1.79 | 1.50 | 1.50 | 2.05 | 1.96 | 1.33 | 1.33 | 3.72 | 3.51 | 2.00 | 2.00 | 0.00 | 0.00 | -1.51 | -43.02 |
| Zambia | 1.12 | 1.42 | 0.60 | 0.69 | 2.43 | 2.30 | 1.67 | 2.20 | 2.71 | 3.26 | 1.00 | 1.51 | 0.51 | 51.00 | -1.75 | -53.72 |
| Kenya | 2.16 | 2.00 | 2.00 | 2.00 | 1.43 | 1.85 | 1.85 | 1.85 | 3.09 | 3.70 | 3.70 | 3.70 | 0.00 | 0.00 | 0.00 | 0.00 |
| Uganda | 1.10 | 1.10 | 1.10 | 1.10 | 2.55 | 2.55 | 2.55 | 2.55 | 2.80 | 2.80 | 2.80 | 2.80 | 0.00 | 0.00 | 0.00 | 0.00 |
| Zimbabwe | 1.00 | 1.00 | 0.90 | 0.90 | 1.45 | 1.50 | 0.61 | 0.61 | 1.45 | 1.50 | 0.55 | 0.55 | 0.00 | 0.00 | -0.95 | -63.33 |
| Former Soviet Union - 12 | | | | | | | | | | | | | | | | |
| Ukraine | 4.05 | 4.00 | 3.80 | 3.90 | 6.67 | 7.75 | 7.11 | 7.10 | 27.00 | 31.00 | 27.00 | 27.70 | 0.70 | 2.59 | -3.30 | -10.65 |
| Russia | 2.64 | 2.40 | 2.60 | 2.50 | 6.00 | 6.92 | 6.15 | 6.16 | 15.83 | 16.60 | 16.00 | 15.40 | -0.60 | -3.75 | -1.20 | -7.23 |
| South Asia | | | | | | | | | | | | | | | | |
| India | 10.74 | 11.00 | 11.00 | 11.00 | 3.54 | 3.41 | 3.41 | 3.41 | 38.09 | 37.50 | 37.50 | 37.50 | 0.00 | 0.00 | 0.00 | 0.00 |
| Pakistan | 1.60 | 1.65 | 1.50 | 1.50 | 5.83 | 6.36 | 6.33 | 6.33 | 9.33 | 10.50 | 9.50 | 9.50 | 0.00 | 0.00 | -1.00 | -9.52 |
| Nepal | 0.97 | 0.97 | 0.97 | 0.97 | 2.82 | 2.82 | 2.82 | 2.82 | 2.72 | 2.72 | 2.72 | 2.72 | 0.00 | 0.00 | 0.00 | 0.00 |
| Southeast Asia | | | | | | | | | | | | | | | | |
| Indonesia | 3.50 | 3.70 | 3.80 | 3.80 | 3.54 | 3.43 | 3.47 | 3.47 | 12.40 | 12.70 | 13.20 | 13.20 | 0.00 | 0.00 | 0.50 | 3.94 |
| Philippines | 2.54 | 2.60 | 2.60 | 2.60 | 3.28 | 3.27 | 3.27 | 3.27 | 8.32 | 8.50 | 8.50 | 8.50 | 0.00 | 0.00 | 0.00 | 0.00 |
| Vietnam | 0.89 | 0.87 | 0.85 | 0.85 | 4.99 | 5.00 | 5.06 | 5.06 | 4.42 | 4.35 | 4.30 | 4.30 | 0.00 | 0.00 | -0.05 | -1.15 |
| Thailand | 1.18 | 1.22 | 1.23 | 1.23 | 4.41 | 4.34 | 4.39 | 4.39 | 5.20 | 5.30 | 5.40 | 5.40 | 0.00 | 0.00 | 0.10 | 1.89 |
| Mexico | 6.89 | 6.10 | 6.40 | 6.40 | 4.07 | 3.82 | 3.91 | 3.91 | 28.08 | 23.30 | 25.00 | 25.00 | 0.00 | 0.00 | 1.70 | 7.30 |
| Canada | 1.44 | 1.52 | 1.50 | 1.50 | 10.07 | 9.92 | 10.00 | 10.00 | 14.54 | 15.08 | 15.00 | 15.00 | 0.00 | 0.00 | -0.08 | -0.50 |
| Turkey | 0.53 | 0.65 | 0.56 | 0.56 | 12.83 | 12.92 | 13.04 | 13.04 | 6.80 | 8.40 | 7.30 | 7.30 | 0.00 | 0.00 | -1.10 | -13.10 |
| Others | 26.87 | 26.48 | 26.60 | 26.60 | 2.51 | 2.76 | 2.72 | 2.72 | 67.54 | 73.07 | 72.33 | 72.33 | 0.00 | 0.00 | -0.75 | -1.02 |

World and Selected Countries and Regions

Table 05 Barley Area, Yield, and Production

| Country / Region | Area (Million hectares) | | | | Yield (Metric tons per hectare) | | | | Production (Million metric tons) | | | | Change in Production | | | |
|---------------------------------|----------------------------|---------|---------------|-------|------------------------------------|---------|---------------|------|-------------------------------------|---------|---------------|--------|----------------------|---------|----------------|---------|
| | Prel. | | 2024/25 Proj. | | Prel. | | 2024/25 Proj. | | Prel. | | 2024/25 Proj. | | From last month | | From last year | |
| | 2022/23 | 2023/24 | May | Jun | 2022/23 | 2023/24 | May | Jun | 2022/23 | 2023/24 | May | Jun | MMT | Percent | MMT | Percent |
| World | 47.12 | 46.66 | 47.52 | 46.85 | 3.20 | 3.05 | 3.15 | 3.16 | 150.87 | 142.21 | 149.91 | 147.96 | -1.96 | -1.30 | 5.74 | 4.04 |
| United States | 0.98 | 1.03 | 0.85 | 0.85 | 3.86 | 3.90 | 4.12 | 4.12 | 3.79 | 4.03 | 3.51 | 3.51 | 0.00 | 0.00 | -0.52 | -13.01 |
| Total Foreign | 46.14 | 45.63 | 46.67 | 46.00 | 3.19 | 3.03 | 3.14 | 3.14 | 147.08 | 138.18 | 146.41 | 144.45 | -1.96 | -1.34 | 6.27 | 4.54 |
| European Union | 10.31 | 10.30 | 10.50 | 10.40 | 5.02 | 4.63 | 5.19 | 5.17 | 51.80 | 47.70 | 54.50 | 53.80 | -0.70 | -1.28 | 6.10 | 12.79 |
| United Kingdom | 1.12 | 1.14 | 1.20 | 1.20 | 6.62 | 6.12 | 6.25 | 6.25 | 7.39 | 6.96 | 7.50 | 7.50 | 0.00 | 0.00 | 0.54 | 7.71 |
| Former Soviet Union - 12 | | | | | | | | | | | | | | | | |
| Russia | 7.75 | 7.65 | 7.50 | 7.30 | 2.77 | 2.68 | 2.60 | 2.60 | 21.50 | 20.50 | 19.50 | 19.00 | -0.50 | -2.56 | -1.50 | -7.32 |
| Ukraine | 1.95 | 1.68 | 1.50 | 1.50 | 3.13 | 3.78 | 3.47 | 3.33 | 6.10 | 6.35 | 5.20 | 5.00 | -0.20 | -3.85 | -1.35 | -21.26 |
| Kazakhstan | 2.18 | 2.43 | 2.50 | 2.50 | 1.51 | 1.08 | 1.24 | 1.24 | 3.29 | 2.61 | 3.10 | 3.10 | 0.00 | 0.00 | 0.49 | 18.59 |
| Belarus | 0.40 | 0.40 | 0.40 | 0.40 | 2.75 | 2.75 | 3.00 | 3.00 | 1.10 | 1.10 | 1.20 | 1.20 | 0.00 | 0.00 | 0.10 | 9.09 |
| Azerbaijan | 0.39 | 0.36 | 0.36 | 0.36 | 2.85 | 2.99 | 3.06 | 3.06 | 1.10 | 1.07 | 1.10 | 1.10 | 0.00 | 0.00 | 0.03 | 3.09 |
| Canada | 2.64 | 2.70 | 2.60 | 2.60 | 3.79 | 3.30 | 3.69 | 3.69 | 9.99 | 8.90 | 9.60 | 9.60 | 0.00 | 0.00 | 0.70 | 7.91 |
| Australia | 4.13 | 4.20 | 4.40 | 4.40 | 3.43 | 2.57 | 2.48 | 2.61 | 14.14 | 10.80 | 10.90 | 11.50 | 0.60 | 5.50 | 0.70 | 6.48 |
| Middle East | | | | | | | | | | | | | | | | |
| Turkey | 3.80 | 3.70 | 3.75 | 3.75 | 1.95 | 2.16 | 1.89 | 1.89 | 7.40 | 8.00 | 7.10 | 7.10 | 0.00 | 0.00 | -0.90 | -11.25 |
| Iran | 1.65 | 1.65 | 1.60 | 1.60 | 1.82 | 1.82 | 1.94 | 1.94 | 3.00 | 3.00 | 3.10 | 3.10 | 0.00 | 0.00 | 0.10 | 3.33 |
| Iraq | 0.21 | 0.16 | 1.00 | 1.00 | 1.12 | 1.29 | 1.40 | 1.40 | 0.24 | 0.20 | 1.40 | 1.40 | 0.00 | 0.00 | 1.20 | 600.00 |
| Syria | 1.12 | 1.10 | 1.10 | 1.10 | 0.16 | 0.45 | 1.09 | 1.09 | 0.18 | 0.50 | 1.20 | 1.20 | 0.00 | 0.00 | 0.70 | 140.00 |
| Africa | | | | | | | | | | | | | | | | |
| Ethiopia | 0.98 | 0.98 | 0.98 | 0.98 | 2.22 | 2.50 | 2.54 | 2.54 | 2.18 | 2.45 | 2.49 | 2.49 | 0.00 | 0.00 | 0.04 | 1.43 |
| Morocco | 1.14 | 1.17 | 0.80 | 0.80 | 0.61 | 1.15 | 0.63 | 0.63 | 0.70 | 1.35 | 0.50 | 0.50 | 0.00 | 0.00 | -0.85 | -62.96 |
| Algeria | 1.03 | 1.03 | 1.03 | 1.03 | 1.37 | 1.00 | 1.17 | 1.17 | 1.40 | 1.03 | 1.20 | 1.20 | 0.00 | 0.00 | 0.18 | 17.07 |
| Tunisia | 0.30 | 0.11 | 0.35 | 0.35 | 1.53 | 0.82 | 1.57 | 1.57 | 0.46 | 0.09 | 0.55 | 0.55 | 0.00 | 0.00 | 0.46 | 517.98 |
| South Africa | 0.10 | 0.11 | 0.11 | 0.11 | 2.99 | 3.49 | 3.36 | 3.36 | 0.30 | 0.38 | 0.37 | 0.37 | 0.00 | 0.00 | -0.01 | -1.86 |
| South America | | | | | | | | | | | | | | | | |
| Argentina | 1.59 | 1.30 | 1.40 | 1.25 | 2.95 | 3.92 | 3.71 | 3.76 | 4.70 | 5.10 | 5.20 | 4.70 | -0.50 | -9.62 | -0.40 | -7.84 |
| Uruguay | 0.21 | 0.18 | 0.19 | 0.19 | 4.25 | 3.89 | 4.21 | 4.21 | 0.90 | 0.70 | 0.80 | 0.80 | 0.00 | 0.00 | 0.10 | 14.29 |
| Brazil | 0.13 | 0.14 | 0.14 | 0.14 | 3.89 | 2.90 | 4.07 | 4.07 | 0.50 | 0.39 | 0.55 | 0.55 | 0.00 | 0.00 | 0.16 | 40.66 |
| India | 0.45 | 0.63 | 0.72 | 0.50 | 3.03 | 3.05 | 2.99 | 3.00 | 1.37 | 1.91 | 2.15 | 1.50 | -0.65 | -30.23 | -0.41 | -21.59 |
| China | 0.56 | 0.50 | 0.50 | 0.50 | 3.91 | 4.00 | 4.00 | 4.00 | 2.19 | 2.00 | 2.00 | 2.00 | 0.00 | 0.00 | 0.00 | 0.00 |
| Mexico | 0.30 | 0.29 | 0.29 | 0.29 | 2.69 | 2.69 | 2.69 | 2.69 | 0.80 | 0.78 | 0.78 | 0.78 | 0.00 | 0.00 | 0.00 | 0.00 |
| Afghanistan | 0.06 | 0.08 | 0.07 | 0.07 | 1.53 | 1.38 | 1.43 | 1.43 | 0.10 | 0.11 | 0.10 | 0.10 | 0.00 | 0.00 | -0.01 | -9.09 |
| Others | 1.67 | 1.67 | 1.69 | 1.69 | 2.57 | 2.52 | 2.56 | 2.56 | 4.28 | 4.21 | 4.32 | 4.32 | -0.01 | -0.12 | 0.11 | 2.57 |

World and Selected Countries and Regions

Table 06 Oats Area, Yield, and Production

| Country / Region | Area (Million hectares) | | | | Yield (Metric tons per hectare) | | | | Production (Million metric tons) | | | | Change in Production | | | |
|---------------------------------|----------------------------|---------|---------------|------|------------------------------------|---------|---------------|------|-------------------------------------|---------|---------------|-------|----------------------|---------|----------------|---------|
| | 2022/23 | Prel. | 2024/25 Proj. | | 2022/23 | Prel. | 2024/25 Proj. | | 2022/23 | Prel. | 2024/25 Proj. | | From last month | | From last year | |
| | | 2023/24 | May | Jun | | 2023/24 | May | Jun | | 2023/24 | May | Jun | MMT | Percent | MMT | Percent |
| World | 9.36 | 8.35 | 8.86 | 8.86 | 2.71 | 2.30 | 2.51 | 2.50 | 25.33 | 19.23 | 22.25 | 22.15 | -0.10 | -0.45 | 2.92 | 15.17 |
| United States | 0.36 | 0.34 | 0.28 | 0.28 | 2.35 | 2.46 | 2.41 | 2.41 | 0.84 | 0.83 | 0.68 | 0.68 | 0.00 | 0.00 | -0.15 | -17.63 |
| Total Foreign | 9.01 | 8.02 | 8.57 | 8.57 | 2.72 | 2.30 | 2.52 | 2.50 | 24.50 | 18.40 | 21.57 | 21.47 | -0.10 | -0.46 | 3.06 | 16.65 |
| European Union | 2.35 | 2.29 | 2.35 | 2.35 | 3.19 | 2.59 | 3.02 | 3.02 | 7.49 | 5.92 | 7.10 | 7.10 | 0.00 | 0.00 | 1.18 | 19.93 |
| Former Soviet Union - 12 | | | | | | | | | | | | | | | | |
| Russia | 2.13 | 1.77 | 2.00 | 2.00 | 2.11 | 1.86 | 1.90 | 1.90 | 4.50 | 3.30 | 3.80 | 3.80 | 0.00 | 0.00 | 0.50 | 15.15 |
| Ukraine | 0.15 | 0.17 | 0.15 | 0.15 | 2.47 | 2.53 | 2.33 | 2.33 | 0.38 | 0.43 | 0.35 | 0.35 | 0.00 | 0.00 | -0.08 | -18.60 |
| Belarus | 0.16 | 0.16 | 0.16 | 0.16 | 2.42 | 2.26 | 2.06 | 2.06 | 0.38 | 0.35 | 0.32 | 0.32 | 0.00 | 0.00 | -0.03 | -8.57 |
| Kazakhstan | 0.20 | 0.19 | 0.21 | 0.21 | 1.16 | 0.79 | 1.00 | 1.00 | 0.23 | 0.15 | 0.21 | 0.21 | 0.00 | 0.00 | 0.06 | 40.00 |
| Canada | 1.40 | 0.82 | 1.00 | 1.00 | 3.73 | 3.20 | 3.50 | 3.50 | 5.23 | 2.64 | 3.50 | 3.50 | 0.00 | 0.00 | 0.86 | 32.78 |
| South America | | | | | | | | | | | | | | | | |
| Argentina | 0.26 | 0.29 | 0.30 | 0.30 | 1.67 | 2.14 | 2.00 | 2.00 | 0.43 | 0.61 | 0.60 | 0.60 | 0.00 | 0.00 | -0.01 | -1.64 |
| Brazil | 0.50 | 0.52 | 0.52 | 0.52 | 2.39 | 1.89 | 2.33 | 2.33 | 1.19 | 0.98 | 1.20 | 1.20 | 0.00 | 0.00 | 0.22 | 21.95 |
| Chile | 0.07 | 0.09 | 0.10 | 0.10 | 4.63 | 4.71 | 4.70 | 4.70 | 0.33 | 0.40 | 0.47 | 0.47 | 0.00 | 0.00 | 0.07 | 17.50 |
| Uruguay | 0.02 | 0.01 | 0.02 | 0.02 | 2.40 | 2.20 | 2.00 | 2.00 | 0.04 | 0.02 | 0.03 | 0.03 | 0.00 | 0.00 | 0.01 | 36.36 |
| Oceania | | | | | | | | | | | | | | | | |
| Australia | 0.75 | 0.70 | 0.73 | 0.73 | 2.13 | 1.57 | 1.79 | 1.66 | 1.59 | 1.10 | 1.30 | 1.20 | -0.10 | -7.69 | 0.10 | 9.09 |
| New Zealand | 0.01 | 0.00 | 0.00 | 0.00 | 6.60 | 6.50 | 6.25 | 6.25 | 0.03 | 0.03 | 0.03 | 0.03 | 0.00 | 0.00 | 0.00 | -3.85 |
| China | 0.41 | 0.41 | 0.41 | 0.41 | 1.48 | 1.48 | 1.48 | 1.48 | 0.60 | 0.60 | 0.60 | 0.60 | 0.00 | 0.00 | 0.00 | 0.00 |
| Africa | | | | | | | | | | | | | | | | |
| Algeria | 0.08 | 0.08 | 0.08 | 0.08 | 1.31 | 1.31 | 1.31 | 1.31 | 0.11 | 0.11 | 0.11 | 0.11 | 0.00 | 0.00 | 0.00 | 0.00 |
| Morocco | 0.01 | 0.02 | 0.02 | 0.02 | 0.31 | 0.40 | 0.40 | 0.40 | 0.00 | 0.01 | 0.01 | 0.01 | 0.00 | 0.00 | 0.00 | 0.00 |
| South Africa | 0.03 | 0.03 | 0.02 | 0.02 | 1.04 | 1.46 | 1.50 | 1.50 | 0.03 | 0.04 | 0.03 | 0.03 | 0.00 | 0.00 | -0.01 | -26.83 |
| Other Europe | | | | | | | | | | | | | | | | |
| United Kingdom | 0.18 | 0.17 | 0.20 | 0.20 | 5.72 | 4.97 | 5.00 | 5.00 | 1.01 | 0.83 | 1.00 | 1.00 | 0.00 | 0.00 | 0.17 | 20.48 |
| Norway | 0.06 | 0.07 | 0.07 | 0.07 | 4.62 | 4.29 | 4.29 | 4.29 | 0.29 | 0.30 | 0.30 | 0.30 | 0.00 | 0.00 | 0.00 | 0.00 |
| Serbia | 0.02 | 0.02 | 0.02 | 0.02 | 2.80 | 3.00 | 3.00 | 3.00 | 0.04 | 0.06 | 0.06 | 0.06 | 0.00 | 0.00 | 0.00 | 0.00 |
| Albania | 0.02 | 0.02 | 0.02 | 0.02 | 2.27 | 2.27 | 2.27 | 2.27 | 0.03 | 0.03 | 0.03 | 0.03 | 0.00 | 0.00 | 0.00 | 0.00 |
| Bosnia and Herzegovina | 0.01 | 0.01 | 0.01 | 0.01 | 4.00 | 3.43 | 3.43 | 3.43 | 0.04 | 0.02 | 0.02 | 0.02 | 0.00 | 0.00 | 0.00 | 0.00 |
| Turkey | 0.14 | 0.13 | 0.13 | 0.13 | 2.64 | 2.60 | 2.62 | 2.62 | 0.37 | 0.33 | 0.34 | 0.34 | 0.00 | 0.00 | 0.02 | 4.62 |
| Mexico | 0.05 | 0.03 | 0.04 | 0.04 | 2.22 | 2.20 | 2.00 | 2.00 | 0.11 | 0.06 | 0.08 | 0.08 | 0.00 | 0.00 | 0.03 | 45.45 |
| Others | 0.03 | 0.06 | 0.05 | 0.05 | 1.63 | 1.68 | 1.78 | 1.78 | 0.05 | 0.09 | 0.08 | 0.08 | 0.00 | 0.00 | -0.01 | -12.77 |

World and Selected Countries and Regions

Table 07 Rye Area, Yield, and Production

| Country / Region | Area (Million hectares) | | | | Yield (Metric tons per hectare) | | | | Production (Million metric tons) | | | | Change in Production | | | | | | |
|---------------------------------|----------------------------|---------|------|---------------|------------------------------------|---------|-------|------|-------------------------------------|-------|---------|-------|----------------------|---------------|-------|-----------------|--|----------------|--|
| | 2022/23 | Prel. | | 2024/25 Proj. | | 2022/23 | Prel. | | 2024/25 Proj. | | 2022/23 | Prel. | | 2024/25 Proj. | | From last month | | From last year | |
| | | 2023/24 | May | Jun | 2023/24 | | May | Jun | 2023/24 | May | | Jun | MMT | Percent | MMT | Percent | | | |
| World | 3.68 | 3.61 | 3.68 | 3.68 | 3.30 | 3.23 | 3.23 | 3.23 | 12.13 | 11.66 | 11.88 | 11.88 | 0.00 | 0.00 | 0.22 | 1.87 | | | |
| United States | 0.14 | 0.13 | 0.12 | 0.12 | 2.26 | 2.03 | 2.21 | 2.21 | 0.32 | 0.26 | 0.27 | 0.27 | 0.00 | 0.00 | 0.00 | 1.14 | | | |
| Total Foreign | 3.54 | 3.48 | 3.56 | 3.56 | 3.34 | 3.28 | 3.26 | 3.26 | 11.81 | 11.39 | 11.61 | 11.61 | 0.00 | 0.00 | 0.22 | 1.89 | | | |
| European Union | 1.76 | 1.86 | 1.80 | 1.80 | 4.27 | 4.10 | 4.28 | 4.28 | 7.53 | 7.63 | 7.70 | 7.70 | 0.00 | 0.00 | 0.07 | 0.86 | | | |
| Former Soviet Union - 12 | | | | | | | | | | | | | | | | | | | |
| Russia | 0.88 | 0.79 | 0.90 | 0.90 | 2.27 | 2.15 | 2.06 | 2.06 | 2.00 | 1.70 | 1.85 | 1.85 | 0.00 | 0.00 | 0.15 | 8.82 | | | |
| Belarus | 0.30 | 0.31 | 0.32 | 0.32 | 2.50 | 2.52 | 2.38 | 2.38 | 0.75 | 0.78 | 0.76 | 0.76 | 0.00 | 0.00 | -0.02 | -2.56 | | | |
| Ukraine | 0.10 | 0.08 | 0.08 | 0.08 | 3.15 | 3.00 | 2.88 | 2.88 | 0.32 | 0.24 | 0.23 | 0.23 | 0.00 | 0.00 | -0.01 | -4.17 | | | |
| Kazakhstan | 0.03 | 0.02 | 0.03 | 0.03 | 1.76 | 0.86 | 1.17 | 1.17 | 0.06 | 0.02 | 0.04 | 0.04 | 0.00 | 0.00 | 0.02 | 94.44 | | | |
| Turkey | 0.10 | 0.11 | 0.11 | 0.11 | 2.79 | 2.91 | 2.91 | 2.91 | 0.27 | 0.32 | 0.32 | 0.32 | 0.00 | 0.00 | 0.00 | 0.00 | | | |
| Canada | 0.15 | 0.12 | 0.12 | 0.12 | 3.42 | 3.09 | 3.17 | 3.17 | 0.52 | 0.36 | 0.37 | 0.37 | 0.00 | 0.00 | 0.01 | 1.96 | | | |
| South America | | | | | | | | | | | | | | | | | | | |
| Chile | 0.00 | 0.00 | 0.00 | 0.00 | 5.00 | 0.00 | 0.00 | 0.00 | 0.01 | 0.00 | 0.00 | 0.00 | 0.00 | 100.00 | 0.00 | 100.00 | | | |
| Argentina | 0.11 | 0.09 | 0.11 | 0.11 | 1.66 | 1.83 | 1.76 | 1.76 | 0.18 | 0.17 | 0.19 | 0.19 | 0.00 | 0.00 | 0.02 | 12.12 | | | |
| Other Europe | | | | | | | | | | | | | | | | | | | |
| Bosnia and Herzegovina | 0.00 | 0.00 | 0.00 | 0.00 | 3.00 | 3.00 | 3.00 | 3.00 | 0.01 | 0.01 | 0.01 | 0.01 | 0.00 | 0.00 | 0.00 | -33.33 | | | |
| Switzerland | 0.00 | 0.00 | 0.00 | 0.00 | 5.00 | 5.00 | 5.00 | 5.00 | 0.01 | 0.01 | 0.01 | 0.01 | 0.00 | 0.00 | 0.00 | 0.00 | | | |
| Serbia | 0.01 | 0.01 | 0.01 | 0.01 | 3.00 | 3.33 | 3.00 | 3.00 | 0.02 | 0.02 | 0.02 | 0.02 | 0.00 | 0.00 | 0.00 | -10.00 | | | |
| Australia | 0.05 | 0.05 | 0.05 | 0.05 | 0.71 | 0.71 | 0.71 | 0.71 | 0.03 | 0.03 | 0.03 | 0.03 | 0.00 | 0.00 | 0.00 | 0.00 | | | |
| Others | 0.05 | 0.04 | 0.04 | 0.04 | 2.47 | 2.43 | 2.20 | 2.20 | 0.12 | 0.11 | 0.10 | 0.10 | 0.00 | 0.00 | -0.01 | -9.35 | | | |

World and Selected Countries and Regions

Table 08 Sorghum Area, Yield, and Production

| Country / Region | Area (Million hectares) | | | | Yield (Metric tons per hectare) | | | | Production (Million metric tons) | | | | Change in Production | | | | | | |
|-----------------------|----------------------------|---------|-------|---------------|------------------------------------|---------|-------|------|-------------------------------------|-------|---------|-------|----------------------|---------------|-------|-----------------|--|----------------|--|
| | 2022/23 | Prel. | | 2024/25 Proj. | | 2022/23 | Prel. | | 2024/25 Proj. | | 2022/23 | Prel. | | 2024/25 Proj. | | From last month | | From last year | |
| | | 2023/24 | May | Jun | 2023/24 | | May | Jun | 2023/24 | May | | Jun | MMT | Percent | MMT | Percent | | | |
| World | 40.64 | 40.16 | 41.83 | 41.83 | 1.42 | 1.45 | 1.52 | 1.52 | 57.61 | 58.22 | 63.64 | 63.64 | 0.00 | 0.00 | 5.42 | 9.31 | | | |
| United States | 1.85 | 2.48 | 2.27 | 2.27 | 2.58 | 3.26 | 4.35 | 4.35 | 4.77 | 8.07 | 9.86 | 9.86 | 0.00 | 0.00 | 1.79 | 22.12 | | | |
| Total Foreign | 38.79 | 37.68 | 39.57 | 39.57 | 1.36 | 1.33 | 1.36 | 1.36 | 52.84 | 50.15 | 53.79 | 53.79 | 0.00 | 0.00 | 3.64 | 7.25 | | | |
| Africa | | | | | | | | | | | | | | | | | | | |
| Nigeria | 5.70 | 5.70 | 6.10 | 6.10 | 1.19 | 1.12 | 1.18 | 1.18 | 6.81 | 6.40 | 7.20 | 7.20 | 0.00 | 0.00 | 0.80 | 12.50 | | | |
| Ethiopia | 1.55 | 1.48 | 1.65 | 1.65 | 2.67 | 2.71 | 2.48 | 2.48 | 4.14 | 4.01 | 4.10 | 4.10 | 0.00 | 0.00 | 0.09 | 2.24 | | | |
| Sudan | 7.24 | 5.99 | 7.50 | 7.50 | 0.72 | 0.51 | 0.67 | 0.67 | 5.25 | 3.06 | 5.00 | 5.00 | 0.00 | 0.00 | 1.95 | 63.67 | | | |
| Burkina Faso | 1.96 | 1.90 | 1.90 | 1.90 | 1.03 | 0.93 | 1.00 | 1.00 | 2.01 | 1.77 | 1.90 | 1.90 | 0.00 | 0.00 | 0.13 | 7.22 | | | |
| Mali | 1.64 | 1.50 | 1.50 | 1.50 | 0.97 | 1.02 | 1.00 | 1.00 | 1.58 | 1.53 | 1.50 | 1.50 | 0.00 | 0.00 | -0.03 | -1.83 | | | |
| Niger | 3.79 | 3.70 | 3.70 | 3.70 | 0.55 | 0.46 | 0.51 | 0.51 | 2.10 | 1.70 | 1.90 | 1.90 | 0.00 | 0.00 | 0.20 | 11.76 | | | |
| Cameroon | 0.74 | 0.74 | 0.74 | 0.74 | 1.62 | 1.62 | 1.62 | 1.62 | 1.20 | 1.20 | 1.20 | 1.20 | 0.00 | 0.00 | 0.00 | 0.00 | | | |
| Tanzania | 1.00 | 1.00 | 1.00 | 1.00 | 1.00 | 1.00 | 1.00 | 1.00 | 1.00 | 1.00 | 1.00 | 1.00 | 0.00 | 0.00 | 0.00 | 0.00 | | | |
| Egypt | 0.15 | 0.15 | 0.15 | 0.15 | 5.00 | 5.20 | 5.27 | 5.27 | 0.75 | 0.78 | 0.79 | 0.79 | 0.00 | 0.00 | 0.01 | 1.28 | | | |
| Uganda | 0.25 | 0.25 | 0.25 | 0.25 | 0.90 | 0.90 | 0.90 | 0.90 | 0.23 | 0.23 | 0.23 | 0.23 | 0.00 | 0.00 | 0.00 | 0.00 | | | |
| Ghana | 0.31 | 0.31 | 0.31 | 0.31 | 1.29 | 1.42 | 1.29 | 1.29 | 0.40 | 0.44 | 0.40 | 0.40 | 0.00 | 0.00 | -0.04 | -8.88 | | | |
| Mozambique | 0.29 | 0.27 | 0.28 | 0.28 | 0.51 | 0.55 | 0.33 | 0.33 | 0.15 | 0.15 | 0.09 | 0.09 | 0.00 | 0.00 | -0.06 | -40.00 | | | |
| South Africa | 0.03 | 0.04 | 0.04 | 0.04 | 2.76 | 2.25 | 3.25 | 3.25 | 0.09 | 0.09 | 0.13 | 0.13 | 0.00 | 0.00 | 0.04 | 44.44 | | | |
| Mexico | 1.40 | 1.23 | 1.32 | 1.32 | 3.50 | 3.48 | 3.41 | 3.41 | 4.89 | 4.28 | 4.50 | 4.50 | 0.00 | 0.00 | 0.22 | 5.14 | | | |
| South America | | | | | | | | | | | | | | | | | | | |
| Argentina | 0.50 | 0.60 | 0.70 | 0.70 | 3.22 | 4.17 | 4.29 | 4.29 | 1.61 | 2.50 | 3.00 | 3.00 | 0.00 | 0.00 | 0.50 | 20.00 | | | |
| Brazil | 1.42 | 1.54 | 1.60 | 1.60 | 3.38 | 3.09 | 3.13 | 3.13 | 4.79 | 4.76 | 5.00 | 5.00 | 0.00 | 0.00 | 0.24 | 5.02 | | | |
| South Asia | | | | | | | | | | | | | | | | | | | |
| India | 3.54 | 4.10 | 3.80 | 3.80 | 1.08 | 1.07 | 1.11 | 1.11 | 3.81 | 4.40 | 4.20 | 4.20 | 0.00 | 0.00 | -0.20 | -4.55 | | | |
| Pakistan | 0.22 | 0.22 | 0.22 | 0.22 | 0.63 | 0.63 | 0.63 | 0.63 | 0.14 | 0.14 | 0.14 | 0.14 | 0.00 | 0.00 | 0.00 | 0.00 | | | |
| China | 0.68 | 0.63 | 0.63 | 0.63 | 4.58 | 4.76 | 4.76 | 4.76 | 3.09 | 3.00 | 3.00 | 3.00 | 0.00 | 0.00 | 0.00 | 0.00 | | | |
| Australia | 0.69 | 0.60 | 0.60 | 0.60 | 3.84 | 3.67 | 3.67 | 3.67 | 2.64 | 2.20 | 2.20 | 2.20 | 0.00 | 0.00 | 0.00 | 0.00 | | | |
| European Union | 0.13 | 0.16 | 0.16 | 0.16 | 4.10 | 5.23 | 5.10 | 5.10 | 0.51 | 0.81 | 0.79 | 0.79 | 0.00 | 0.00 | -0.02 | -2.47 | | | |
| Others | 5.59 | 5.58 | 5.43 | 5.43 | 1.01 | 1.02 | 1.02 | 1.02 | 5.64 | 5.72 | 5.53 | 5.53 | 0.00 | 0.02 | -0.19 | -3.31 | | | |

World and Selected Countries and Regions

Table 09 Rice Area, Yield, and Production
World and Selected Countries and Regions

| Country / Region | Area (Million hectares) | | | | Yield (Metric tons per hectare) | | | | Production (Million metric tons) | | | | Change in Production | | | |
|-----------------------|----------------------------|---------|---------------|--------|------------------------------------|---------|---------------|------|-------------------------------------|---------|---------------|--------|----------------------|---------|----------------|---------|
| | Prel. | | 2024/25 Proj. | | Prel. | | 2024/25 Proj. | | Prel. | | 2024/25 Proj. | | From last month | | From last year | |
| | 2022/23 | 2023/24 | May | Jun | 2022/23 | 2023/24 | May | Jun | 2022/23 | 2023/24 | May | Jun | MMT | Percent | MMT | Percent |
| World | 165.47 | 165.67 | 167.55 | 167.56 | 4.66 | 4.69 | 4.70 | 4.70 | 515.82 | 520.00 | 527.61 | 527.63 | 0.02 | 0.00 | 7.63 | 1.47 |
| United States | 0.88 | 1.16 | 1.17 | 1.17 | 8.28 | 8.57 | 8.56 | 8.56 | 5.08 | 6.93 | 6.99 | 6.99 | 0.00 | 0.00 | 0.06 | 0.88 |
| Total Foreign | 164.59 | 164.51 | 166.39 | 166.39 | 4.64 | 4.66 | 4.68 | 4.68 | 510.73 | 513.07 | 520.61 | 520.63 | 0.02 | 0.00 | 7.57 | 1.47 |
| East Asia | | | | | | | | | | | | | | | | |
| China | 29.45 | 28.95 | 29.00 | 29.00 | 7.08 | 7.14 | 7.19 | 7.19 | 145.95 | 144.62 | 146.00 | 146.00 | 0.00 | 0.00 | 1.38 | 0.95 |
| Japan | 1.50 | 1.46 | 1.44 | 1.44 | 6.86 | 6.84 | 6.87 | 6.87 | 7.48 | 7.27 | 7.20 | 7.20 | 0.00 | 0.00 | -0.07 | -0.99 |
| Korea, South | 0.73 | 0.71 | 0.69 | 0.69 | 6.87 | 6.92 | 6.86 | 6.86 | 3.76 | 3.70 | 3.60 | 3.60 | 0.00 | 0.00 | -0.11 | -2.89 |
| Korea, North | 0.54 | 0.54 | 0.54 | 0.54 | 3.87 | 4.18 | 4.18 | 4.18 | 1.36 | 1.47 | 1.47 | 1.47 | 0.00 | 0.00 | 0.00 | 0.00 |
| South Asia | | | | | | | | | | | | | | | | |
| India | 47.83 | 47.60 | 48.50 | 48.50 | 4.26 | 4.32 | 4.27 | 4.27 | 135.76 | 137.00 | 138.00 | 138.00 | 0.00 | 0.00 | 1.00 | 0.73 |
| Bangladesh | 11.60 | 11.75 | 11.90 | 11.90 | 4.70 | 4.72 | 4.79 | 4.79 | 36.35 | 37.00 | 38.00 | 38.00 | 0.00 | 0.00 | 1.00 | 2.70 |
| Pakistan | 2.98 | 3.62 | 3.80 | 3.80 | 3.68 | 3.73 | 3.75 | 3.75 | 7.30 | 9.00 | 9.50 | 9.50 | 0.00 | 0.00 | 0.50 | 5.56 |
| Nepal | 1.45 | 1.45 | 1.45 | 1.45 | 3.79 | 3.66 | 3.72 | 3.72 | 3.65 | 3.53 | 3.60 | 3.60 | 0.00 | 0.00 | 0.07 | 1.98 |
| Sri Lanka | 1.15 | 1.16 | 1.15 | 1.15 | 3.63 | 4.22 | 4.48 | 4.48 | 2.84 | 3.33 | 3.50 | 3.50 | 0.00 | 0.00 | 0.17 | 5.04 |
| Southeast Asia | | | | | | | | | | | | | | | | |
| Indonesia | 11.30 | 11.00 | 11.20 | 11.20 | 4.72 | 4.73 | 4.78 | 4.78 | 33.90 | 33.02 | 34.00 | 34.00 | 0.00 | 0.00 | 0.98 | 2.97 |
| Vietnam | 7.10 | 7.15 | 7.15 | 7.15 | 6.07 | 6.05 | 6.04 | 6.04 | 26.94 | 27.00 | 27.00 | 27.00 | 0.00 | 0.00 | 0.00 | 0.00 |
| Thailand | 11.07 | 10.65 | 10.70 | 10.70 | 2.86 | 2.85 | 2.85 | 2.85 | 20.91 | 20.00 | 20.10 | 20.10 | 0.00 | 0.00 | 0.10 | 0.50 |
| Burma | 6.80 | 6.86 | 6.80 | 6.80 | 2.71 | 2.72 | 2.78 | 2.78 | 11.80 | 11.95 | 12.10 | 12.10 | 0.00 | 0.00 | 0.15 | 1.26 |
| Philippines | 4.85 | 4.80 | 4.85 | 4.85 | 4.13 | 4.13 | 4.16 | 4.16 | 12.63 | 12.50 | 12.70 | 12.70 | 0.00 | 0.00 | 0.20 | 1.60 |
| Cambodia | 3.47 | 3.58 | 3.64 | 3.64 | 3.29 | 3.29 | 3.32 | 3.32 | 6.96 | 7.17 | 7.38 | 7.38 | 0.00 | 0.00 | 0.20 | 2.83 |
| Laos | 0.96 | 0.95 | 0.97 | 0.97 | 3.23 | 3.21 | 3.22 | 3.22 | 1.95 | 1.92 | 1.97 | 1.97 | 0.00 | 0.00 | 0.05 | 2.60 |
| Malaysia | 0.66 | 0.66 | 0.66 | 0.66 | 3.99 | 3.96 | 4.08 | 4.08 | 1.70 | 1.70 | 1.75 | 1.75 | 0.00 | 0.00 | 0.05 | 2.94 |
| South America | | | | | | | | | | | | | | | | |
| Brazil | 1.48 | 1.50 | 1.60 | 1.60 | 6.78 | 6.86 | 6.89 | 6.89 | 6.82 | 7.00 | 7.50 | 7.50 | 0.00 | 0.00 | 0.50 | 7.14 |
| Peru | 0.42 | 0.43 | 0.43 | 0.43 | 8.34 | 8.52 | 8.60 | 8.60 | 2.40 | 2.50 | 2.55 | 2.55 | 0.00 | 0.00 | 0.05 | 2.00 |
| Africa | | | | | | | | | | | | | | | | |
| Egypt | 0.60 | 0.63 | 0.60 | 0.60 | 8.70 | 8.70 | 8.70 | 8.70 | 3.60 | 3.78 | 3.60 | 3.60 | 0.00 | 0.00 | -0.18 | -4.76 |
| Madagascar | 1.60 | 1.60 | 1.60 | 1.60 | 2.87 | 2.75 | 2.75 | 2.75 | 2.93 | 2.82 | 2.82 | 2.82 | 0.00 | 0.00 | 0.00 | 0.00 |
| Nigeria | 3.50 | 3.50 | 3.50 | 3.50 | 2.43 | 2.43 | 2.49 | 2.49 | 5.36 | 5.36 | 5.48 | 5.48 | 0.00 | 0.00 | 0.13 | 2.35 |
| European Union | 0.33 | 0.36 | 0.40 | 0.40 | 6.11 | 6.05 | 6.78 | 6.78 | 1.29 | 1.38 | 1.72 | 1.72 | 0.00 | 0.00 | 0.34 | 24.35 |
| Iran | 0.57 | 0.57 | 0.57 | 0.57 | 5.32 | 5.30 | 5.32 | 5.32 | 2.00 | 2.00 | 2.00 | 2.00 | 0.00 | 0.00 | 0.01 | 0.25 |
| Others | 12.67 | 13.05 | 13.25 | 13.25 | 3.01 | 3.03 | 3.10 | 3.10 | 25.10 | 26.05 | 27.09 | 27.11 | 0.02 | 0.07 | 1.06 | 4.05 |

Yield is on a rough basis, before the milling process. Production is on a milled basis, after the milling process.

Table 10 Total Oilseed Area, Yield, and Production
World and Selected Countries and Regions

| Country / Region | Area (Million hectares) | | | | Yield (Metric tons per hectare) | | | | Production (Million metric tons) | | | | Change in Production | | | |
|---------------------------------|----------------------------|---------|---------------|--------|------------------------------------|---------|---------------|------|-------------------------------------|---------|---------------|--------|----------------------|---------|----------------|---------|
| | 2022/23 | Prel. | 2024/25 Proj. | | 2022/23 | Prel. | 2024/25 Proj. | | 2022/23 | Prel. | 2024/25 Proj. | | From last month | | From last year | |
| | | 2023/24 | May | Jun | | 2023/24 | May | Jun | | 2023/24 | May | Jun | MMT | Percent | MMT | Percent |
| World Total | -- | -- | -- | -- | -- | -- | -- | -- | 637.89 | 656.83 | 687.06 | 685.81 | -1.25 | -0.18 | 28.98 | 4.41 |
| Total Foreign | -- | -- | -- | -- | -- | -- | -- | -- | 512.14 | 534.58 | 555.90 | 554.65 | -1.25 | -0.22 | 20.07 | 3.75 |
| Oilseed, Copra | -- | -- | -- | -- | -- | -- | -- | -- | 6.00 | 6.21 | 5.81 | 5.81 | 0.00 | 0.00 | -0.40 | -6.50 |
| Oilseed, Palm Kernel | -- | -- | -- | -- | -- | -- | -- | -- | 20.06 | 20.70 | 20.74 | 20.72 | -0.01 | -0.06 | 0.03 | 0.13 |
| Major Oilseeds | 267.33 | 269.80 | 274.93 | 274.36 | 2.29 | 2.33 | 2.40 | 2.40 | 611.83 | 629.92 | 660.52 | 659.28 | -1.24 | -0.19 | 29.36 | 4.66 |
| United States | 39.91 | 38.03 | 40.28 | 40.28 | 3.15 | 3.21 | 3.26 | 3.26 | 125.75 | 122.24 | 131.16 | 131.16 | 0.00 | 0.00 | 8.92 | 7.29 |
| Foreign Oilseeds | 227.42 | 231.77 | 234.65 | 234.08 | 2.14 | 2.19 | 2.26 | 2.26 | 486.07 | 507.67 | 529.36 | 528.12 | -1.24 | -0.23 | 20.44 | 4.03 |
| South America | 71.21 | 74.31 | 76.58 | 76.58 | 3.01 | 3.14 | 3.28 | 3.28 | 214.57 | 233.29 | 251.01 | 251.01 | 0.00 | 0.00 | 17.72 | 7.59 |
| Brazil | 46.46 | 47.78 | 49.56 | 49.56 | 3.59 | 3.32 | 3.54 | 3.54 | 166.77 | 158.70 | 175.53 | 175.53 | 0.00 | 0.00 | 16.84 | 10.61 |
| Argentina | 17.76 | 19.48 | 19.70 | 19.70 | 1.77 | 2.88 | 2.88 | 2.88 | 31.45 | 56.09 | 56.76 | 56.76 | 0.00 | 0.00 | 0.67 | 1.20 |
| Paraguay | 3.74 | 3.71 | 3.87 | 3.87 | 2.75 | 2.89 | 2.83 | 2.83 | 10.27 | 10.72 | 10.94 | 10.94 | 0.00 | 0.00 | 0.23 | 2.12 |
| Bolivia | 1.83 | 1.84 | 1.86 | 1.86 | 2.42 | 2.16 | 2.17 | 2.17 | 4.43 | 3.98 | 4.04 | 4.04 | 0.00 | 0.00 | 0.06 | 1.51 |
| Uruguay | 1.28 | 1.37 | 1.46 | 1.46 | 1.00 | 2.52 | 2.31 | 2.31 | 1.28 | 3.45 | 3.37 | 3.37 | 0.00 | 0.00 | -0.08 | -2.21 |
| China | 25.95 | 26.14 | 26.15 | 26.15 | 2.62 | 2.58 | 2.58 | 2.58 | 67.92 | 67.32 | 67.48 | 67.48 | 0.00 | 0.00 | 0.16 | 0.24 |
| South Asia | 43.63 | 44.21 | 44.36 | 44.36 | 1.04 | 1.05 | 1.07 | 1.07 | 45.32 | 46.53 | 47.34 | 47.34 | 0.00 | 0.00 | 0.81 | 1.73 |
| India | 40.19 | 40.30 | 40.18 | 40.18 | 1.03 | 1.03 | 1.05 | 1.05 | 41.39 | 41.61 | 42.13 | 42.13 | 0.00 | 0.00 | 0.52 | 1.24 |
| Pakistan | 2.51 | 2.99 | 2.91 | 2.91 | 1.06 | 1.23 | 1.20 | 1.20 | 2.67 | 3.68 | 3.49 | 3.49 | 0.00 | 0.00 | -0.20 | -5.29 |
| European Union | 12.32 | 12.31 | 12.17 | 12.17 | 2.61 | 2.71 | 2.74 | 2.72 | 32.13 | 33.32 | 33.39 | 33.14 | -0.25 | -0.75 | -0.18 | -0.54 |
| United Kingdom | 0.37 | 0.39 | 0.28 | 0.28 | 3.73 | 3.11 | 3.21 | 3.13 | 1.36 | 1.22 | 0.90 | 0.88 | -0.03 | -2.78 | -0.34 | -28.04 |
| Former Soviet Union - 12 | 27.85 | 28.75 | 29.64 | 29.64 | 1.87 | 2.03 | 1.96 | 1.96 | 52.07 | 58.30 | 57.97 | 57.97 | 0.00 | 0.00 | -0.33 | -0.57 |
| Russia | 14.74 | 14.85 | 15.50 | 15.50 | 1.80 | 1.89 | 1.81 | 1.81 | 26.55 | 28.10 | 28.10 | 28.10 | 0.00 | 0.00 | 0.00 | 0.00 |
| Ukraine | 8.75 | 9.60 | 9.75 | 9.75 | 2.26 | 2.55 | 2.45 | 2.45 | 19.80 | 24.45 | 23.90 | 23.90 | 0.00 | 0.00 | -0.55 | -2.25 |
| Uzbekistan | 1.07 | 1.05 | 1.02 | 1.02 | 1.24 | 1.15 | 1.18 | 1.18 | 1.33 | 1.21 | 1.21 | 1.21 | 0.00 | 0.00 | 0.00 | 0.00 |
| Canada | 10.75 | 11.16 | 10.93 | 10.93 | 2.36 | 2.32 | 2.41 | 2.41 | 25.32 | 25.87 | 26.37 | 26.37 | 0.00 | 0.00 | 0.50 | 1.93 |
| Africa | 24.35 | 24.35 | 24.13 | 24.13 | 1.05 | 0.98 | 1.06 | 1.06 | 25.60 | 23.76 | 25.65 | 25.65 | 0.00 | 0.00 | 1.89 | 7.95 |
| Nigeria | 4.87 | 4.87 | 5.07 | 5.07 | 1.15 | 1.15 | 1.13 | 1.13 | 5.61 | 5.60 | 5.75 | 5.75 | 0.00 | 0.00 | 0.15 | 2.68 |
| South Africa | 1.88 | 1.87 | 1.94 | 1.94 | 2.02 | 1.49 | 2.00 | 2.00 | 3.80 | 2.77 | 3.87 | 3.87 | 0.00 | 0.00 | 1.10 | 39.65 |
| Tanzania | 1.36 | 1.47 | 1.47 | 1.47 | 0.91 | 0.87 | 0.87 | 0.87 | 1.23 | 1.28 | 1.28 | 1.28 | 0.00 | 0.00 | 0.00 | 0.00 |
| Southeast Asia | 3.11 | 3.07 | 3.01 | 3.04 | 1.38 | 1.38 | 1.39 | 1.39 | 4.30 | 4.25 | 4.20 | 4.24 | 0.04 | 0.91 | -0.02 | -0.38 |
| Burma | 1.98 | 1.97 | 1.95 | 1.98 | 1.22 | 1.24 | 1.26 | 1.26 | 2.40 | 2.44 | 2.46 | 2.50 | 0.04 | 1.55 | 0.06 | 2.25 |
| Indonesia | 0.87 | 0.84 | 0.81 | 0.81 | 1.52 | 1.49 | 1.48 | 1.48 | 1.32 | 1.26 | 1.20 | 1.20 | 0.00 | 0.00 | -0.06 | -4.38 |
| Australia | 4.61 | 4.13 | 4.40 | 3.80 | 2.13 | 1.71 | 1.78 | 1.80 | 9.82 | 7.04 | 7.84 | 6.84 | -1.00 | -12.76 | -0.20 | -2.87 |
| Turkey | 1.47 | 1.27 | 1.30 | 1.30 | 2.71 | 2.43 | 2.68 | 2.68 | 3.98 | 3.09 | 3.49 | 3.49 | 0.00 | 0.00 | 0.40 | 13.00 |
| Others | 1.81 | 1.70 | 1.69 | 1.69 | 2.03 | 2.18 | 2.20 | 2.20 | 3.67 | 3.69 | 3.73 | 3.73 | 0.00 | 0.00 | 0.04 | 1.06 |

World Total and Total Foreign: (Major Oilseeds plus copra and palm kernel) Major Oilseeds: (soybeans, sunflowerseeds, peanuts(inshell), cottonseed and rapeseed)

Table 11 Soybean Area, Yield, and Production

| Country / Region | Area (Million hectares) | | | | Yield (Metric tons per hectare) | | | | Production (Million metric tons) | | | | Change in Production | | | |
|---------------------------------|----------------------------|---------|---------------|--------|------------------------------------|---------|---------------|------|-------------------------------------|---------|---------------|--------|----------------------|---------|----------------|---------|
| | 2022/23 | Prel. | 2024/25 Proj. | | 2022/23 | Prel. | 2024/25 Proj. | | 2022/23 | Prel. | 2024/25 Proj. | | From last month | | From last year | |
| | | 2023/24 | May | Jun | | 2023/24 | May | Jun | | 2023/24 | May | Jun | MMT | Percent | MMT | Percent |
| World | 136.90 | 139.52 | 143.39 | 143.39 | 2.76 | 2.84 | 2.94 | 2.94 | 378.37 | 395.91 | 422.26 | 422.26 | 0.00 | 0.00 | 26.35 | 6.66 |
| United States | 34.87 | 33.33 | 34.64 | 34.64 | 3.33 | 3.40 | 3.50 | 3.50 | 116.22 | 113.34 | 121.11 | 121.11 | 0.00 | 0.00 | 7.77 | 6.85 |
| Total Foreign | 102.03 | 106.19 | 108.75 | 108.75 | 2.57 | 2.66 | 2.77 | 2.77 | 262.15 | 282.57 | 301.15 | 301.15 | 0.00 | 0.00 | 18.59 | 6.58 |
| South America | | | | | | | | | | | | | | | | |
| Brazil | 44.60 | 45.80 | 47.30 | 47.30 | 3.63 | 3.34 | 3.57 | 3.57 | 162.00 | 153.00 | 169.00 | 169.00 | 0.00 | 0.00 | 16.00 | 10.46 |
| Argentina | 14.40 | 16.50 | 16.90 | 16.90 | 1.74 | 3.03 | 3.02 | 3.02 | 25.00 | 50.00 | 51.00 | 51.00 | 0.00 | 0.00 | 1.00 | 2.00 |
| Paraguay | 3.60 | 3.56 | 3.70 | 3.70 | 2.79 | 2.95 | 2.89 | 2.89 | 10.05 | 10.50 | 10.70 | 10.70 | 0.00 | 0.00 | 0.20 | 1.90 |
| Bolivia | 1.60 | 1.60 | 1.61 | 1.61 | 2.57 | 2.28 | 2.30 | 2.30 | 4.11 | 3.65 | 3.70 | 3.70 | 0.00 | 0.00 | 0.05 | 1.37 |
| Uruguay | 0.93 | 1.22 | 1.30 | 1.30 | 0.75 | 2.62 | 2.38 | 2.38 | 0.70 | 3.20 | 3.10 | 3.10 | 0.00 | 0.00 | -0.10 | -3.13 |
| East Asia | | | | | | | | | | | | | | | | |
| China | 10.24 | 10.47 | 10.50 | 10.50 | 1.98 | 1.99 | 1.97 | 1.97 | 20.28 | 20.84 | 20.70 | 20.70 | 0.00 | 0.00 | -0.14 | -0.67 |
| Korea, South | 0.06 | 0.07 | 0.07 | 0.07 | 2.03 | 2.07 | 2.06 | 2.06 | 0.13 | 0.14 | 0.14 | 0.14 | 0.00 | 0.00 | 0.00 | 0.71 |
| Korea, North | 0.16 | 0.16 | 0.16 | 0.16 | 1.15 | 1.15 | 1.15 | 1.15 | 0.18 | 0.18 | 0.18 | 0.18 | 0.00 | 0.00 | 0.00 | 0.00 |
| Japan | 0.15 | 0.16 | 0.16 | 0.16 | 1.60 | 1.59 | 1.64 | 1.64 | 0.24 | 0.25 | 0.26 | 0.26 | 0.00 | 0.00 | 0.01 | 4.86 |
| India | 13.08 | 13.20 | 12.80 | 12.80 | 0.95 | 0.90 | 0.95 | 0.95 | 12.41 | 11.88 | 12.20 | 12.20 | 0.00 | 0.00 | 0.33 | 2.74 |
| Canada | 2.12 | 2.26 | 2.20 | 2.20 | 3.09 | 3.09 | 3.05 | 3.05 | 6.54 | 6.98 | 6.70 | 6.70 | 0.00 | 0.00 | -0.28 | -4.03 |
| Former Soviet Union - 12 | | | | | | | | | | | | | | | | |
| Russia | 3.36 | 3.50 | 3.80 | 3.80 | 1.79 | 1.94 | 1.79 | 1.79 | 6.00 | 6.80 | 6.80 | 6.80 | 0.00 | 0.00 | 0.00 | 0.00 |
| Ukraine | 1.82 | 2.00 | 2.20 | 2.20 | 2.25 | 2.60 | 2.50 | 2.50 | 4.10 | 5.20 | 5.50 | 5.50 | 0.00 | 0.00 | 0.30 | 5.77 |
| European Union | 1.12 | 1.03 | 1.11 | 1.11 | 2.34 | 2.89 | 2.75 | 2.75 | 2.61 | 2.98 | 3.05 | 3.05 | 0.00 | 0.00 | 0.07 | 2.35 |
| Southeast Asia | | | | | | | | | | | | | | | | |
| Indonesia | 0.33 | 0.32 | 0.31 | 0.31 | 1.18 | 1.17 | 1.16 | 1.16 | 0.39 | 0.38 | 0.36 | 0.36 | 0.00 | 0.00 | -0.02 | -4.00 |
| Vietnam | 0.03 | 0.03 | 0.03 | 0.03 | 1.60 | 1.61 | 1.62 | 1.62 | 0.05 | 0.05 | 0.04 | 0.04 | 0.00 | 0.00 | 0.00 | -6.67 |
| Thailand | 0.03 | 0.03 | 0.03 | 0.03 | 1.63 | 1.63 | 1.63 | 1.63 | 0.05 | 0.05 | 0.05 | 0.05 | 0.00 | 0.00 | 0.00 | 0.00 |
| Burma | 0.13 | 0.12 | 0.12 | 0.12 | 1.04 | 1.04 | 1.04 | 1.04 | 0.13 | 0.13 | 0.12 | 0.12 | 0.00 | 0.00 | -0.01 | -4.00 |
| Serbia | 0.24 | 0.24 | 0.24 | 0.24 | 1.70 | 2.77 | 2.64 | 2.64 | 0.40 | 0.65 | 0.62 | 0.62 | 0.00 | 0.00 | -0.03 | -4.62 |
| Mexico | 0.12 | 0.09 | 0.10 | 0.10 | 1.52 | 2.06 | 1.55 | 1.55 | 0.18 | 0.19 | 0.16 | 0.16 | 0.00 | 0.00 | -0.03 | -16.22 |
| Africa | | | | | | | | | | | | | | | | |
| South Africa | 1.15 | 1.15 | 1.20 | 1.20 | 2.41 | 1.55 | 2.33 | 2.33 | 2.77 | 1.78 | 2.80 | 2.80 | 0.00 | 0.00 | 1.02 | 57.30 |
| Nigeria | 1.20 | 1.15 | 1.35 | 1.35 | 0.98 | 1.00 | 0.96 | 0.96 | 1.18 | 1.15 | 1.30 | 1.30 | 0.00 | 0.00 | 0.15 | 13.04 |
| Zambia | 0.38 | 0.38 | 0.38 | 0.38 | 1.27 | 1.27 | 1.27 | 1.27 | 0.48 | 0.48 | 0.48 | 0.48 | 0.00 | 0.00 | 0.00 | 0.00 |
| Uganda | 0.17 | 0.17 | 0.17 | 0.17 | 1.18 | 1.18 | 1.18 | 1.18 | 0.20 | 0.20 | 0.20 | 0.20 | 0.00 | 0.00 | 0.00 | 0.00 |
| Middle East | | | | | | | | | | | | | | | | |
| Iran | 0.08 | 0.07 | 0.07 | 0.07 | 2.27 | 2.36 | 2.43 | 2.43 | 0.17 | 0.17 | 0.17 | 0.17 | 0.00 | 0.00 | 0.01 | 3.03 |
| Turkey | 0.04 | 0.03 | 0.04 | 0.04 | 4.14 | 4.12 | 4.29 | 4.29 | 0.15 | 0.14 | 0.15 | 0.15 | 0.00 | 0.00 | 0.01 | 7.14 |
| Others | 0.92 | 0.90 | 0.93 | 0.93 | 1.81 | 1.82 | 1.81 | 1.81 | 1.66 | 1.63 | 1.68 | 1.68 | 0.00 | 0.00 | 0.05 | 2.88 |

World and Selected Countries and Regions

Table 12 Cottonseed Area, Yield, and Production

| Country / Region | Area (Million hectares) | | | | Yield (Metric tons per hectare) | | | | Production (Million metric tons) | | | | Change in Production | | | |
|---------------------------------|----------------------------|---------|---------------|-------|------------------------------------|---------|---------------|------|-------------------------------------|---------|---------------|-------|----------------------|---------|----------------|---------|
| | Prel. | | 2024/25 Proj. | | Prel. | | 2024/25 Proj. | | Prel. | | 2024/25 Proj. | | From last month | | From last year | |
| | 2022/23 | 2023/24 | May | Jun | 2022/23 | 2023/24 | May | Jun | 2022/23 | 2023/24 | May | Jun | MMT | Percent | MMT | Percent |
| World | 31.25 | 30.82 | 31.79 | 31.82 | 1.36 | 1.35 | 1.36 | 1.36 | 42.42 | 41.59 | 43.17 | 43.21 | 0.04 | 0.09 | 1.62 | 3.90 |
| United States | 2.95 | 2.61 | 3.69 | 3.69 | 1.36 | 1.27 | 1.23 | 1.23 | 4.01 | 3.31 | 4.55 | 4.55 | 0.00 | 0.00 | 1.25 | 37.75 |
| Total Foreign | 28.30 | 28.21 | 28.10 | 28.13 | 1.36 | 1.36 | 1.37 | 1.37 | 38.41 | 38.28 | 38.61 | 38.65 | 0.04 | 0.10 | 0.37 | 0.97 |
| South Asia | | | | | | | | | | | | | | | | |
| India | 12.93 | 12.70 | 12.40 | 12.40 | 0.86 | 0.88 | 0.86 | 0.86 | 11.17 | 11.12 | 10.61 | 10.61 | 0.00 | 0.00 | -0.51 | -4.58 |
| Pakistan | 1.80 | 2.40 | 2.40 | 2.40 | 0.94 | 1.21 | 1.17 | 1.17 | 1.69 | 2.90 | 2.82 | 2.82 | 0.00 | 0.00 | -0.09 | -2.96 |
| China | 3.15 | 2.90 | 2.85 | 2.85 | 3.82 | 3.72 | 3.71 | 3.71 | 12.03 | 10.78 | 10.58 | 10.58 | 0.00 | 0.00 | -0.20 | -1.82 |
| Former Soviet Union - 12 | | | | | | | | | | | | | | | | |
| Uzbekistan | 1.05 | 1.03 | 1.00 | 1.00 | 1.19 | 1.10 | 1.14 | 1.14 | 1.25 | 1.14 | 1.14 | 1.14 | 0.00 | 0.00 | 0.00 | 0.00 |
| Turkmenistan | 0.55 | 0.55 | 0.55 | 0.55 | 0.64 | 0.64 | 0.64 | 0.64 | 0.35 | 0.35 | 0.35 | 0.35 | 0.00 | 0.00 | 0.00 | 0.00 |
| Tajikistan | 0.17 | 0.19 | 0.18 | 0.18 | 1.11 | 1.16 | 1.15 | 1.15 | 0.19 | 0.22 | 0.21 | 0.21 | 0.00 | 0.00 | -0.01 | -6.33 |
| Kazakhstan | 0.13 | 0.12 | 0.12 | 0.12 | 1.05 | 1.00 | 0.94 | 0.94 | 0.13 | 0.12 | 0.11 | 0.11 | 0.00 | 0.00 | 0.00 | -3.42 |
| South America | | | | | | | | | | | | | | | | |
| Brazil | 1.60 | 1.66 | 1.94 | 1.94 | 2.43 | 2.91 | 2.86 | 2.86 | 3.89 | 4.84 | 5.54 | 5.54 | 0.00 | 0.00 | 0.71 | 14.62 |
| Argentina | 0.51 | 0.56 | 0.53 | 0.53 | 0.84 | 1.02 | 1.09 | 1.09 | 0.43 | 0.57 | 0.57 | 0.57 | 0.00 | 0.00 | 0.00 | 0.00 |
| Middle East | | | | | | | | | | | | | | | | |
| Turkey | 0.56 | 0.44 | 0.49 | 0.49 | 2.88 | 2.38 | 2.69 | 2.69 | 1.60 | 1.05 | 1.31 | 1.31 | 0.00 | 0.00 | 0.26 | 24.98 |
| Syria | 0.03 | 0.03 | 0.03 | 0.03 | 2.23 | 2.23 | 2.23 | 2.23 | 0.07 | 0.07 | 0.07 | 0.07 | 0.00 | 0.00 | 0.00 | 0.00 |
| Iran | 0.12 | 0.10 | 0.10 | 0.10 | 1.52 | 1.18 | 1.35 | 1.35 | 0.18 | 0.12 | 0.14 | 0.14 | 0.00 | 0.00 | 0.02 | 14.41 |
| Australia | 0.65 | 0.57 | 0.55 | 0.55 | 2.24 | 2.20 | 2.28 | 2.28 | 1.45 | 1.25 | 1.25 | 1.25 | 0.00 | 0.00 | 0.00 | 0.00 |
| European Union | 0.31 | 0.25 | 0.26 | 0.26 | 1.70 | 1.33 | 1.70 | 1.70 | 0.53 | 0.34 | 0.44 | 0.44 | 0.00 | 0.00 | 0.10 | 29.29 |
| Africa | | | | | | | | | | | | | | | | |
| Burkina Faso | 0.62 | 0.54 | 0.55 | 0.55 | 0.35 | 0.40 | 0.40 | 0.40 | 0.21 | 0.21 | 0.22 | 0.22 | 0.00 | 0.00 | 0.01 | 4.25 |
| Mali | 0.60 | 0.71 | 0.72 | 0.72 | 0.35 | 0.52 | 0.53 | 0.53 | 0.21 | 0.37 | 0.38 | 0.38 | 0.00 | 0.00 | 0.02 | 4.09 |
| Cameroon | 0.23 | 0.25 | 0.25 | 0.25 | 1.29 | 1.35 | 1.35 | 1.35 | 0.30 | 0.33 | 0.33 | 0.33 | 0.00 | 0.00 | 0.00 | 0.00 |
| Cote d'Ivoire | 0.41 | 0.40 | 0.40 | 0.40 | 0.29 | 0.50 | 0.57 | 0.57 | 0.12 | 0.20 | 0.23 | 0.23 | 0.00 | 0.00 | 0.03 | 14.07 |
| Benin | 0.57 | 0.51 | 0.51 | 0.51 | 0.64 | 0.68 | 0.68 | 0.68 | 0.36 | 0.35 | 0.35 | 0.35 | 0.00 | 0.00 | 0.00 | 0.00 |
| Tanzania | 0.36 | 0.47 | 0.47 | 0.47 | 0.37 | 0.38 | 0.38 | 0.38 | 0.13 | 0.18 | 0.18 | 0.18 | 0.00 | 0.00 | 0.00 | 0.00 |
| Egypt | 0.14 | 0.11 | 0.10 | 0.10 | 0.92 | 0.96 | 0.94 | 0.94 | 0.13 | 0.11 | 0.09 | 0.09 | 0.00 | 0.00 | -0.01 | -11.32 |
| Nigeria | 0.27 | 0.27 | 0.27 | 0.27 | 0.56 | 0.56 | 0.56 | 0.56 | 0.15 | 0.15 | 0.15 | 0.15 | 0.00 | 0.00 | 0.00 | 0.00 |
| Uganda | 0.10 | 0.10 | 0.10 | 0.10 | 1.49 | 1.49 | 1.49 | 1.49 | 0.15 | 0.15 | 0.15 | 0.15 | 0.00 | 0.00 | 0.00 | 0.00 |
| Zimbabwe | 0.24 | 0.24 | 0.24 | 0.24 | 0.34 | 0.34 | 0.34 | 0.34 | 0.08 | 0.08 | 0.08 | 0.08 | 0.00 | 0.00 | 0.00 | 0.00 |
| Sudan | 0.20 | 0.20 | 0.20 | 0.20 | 1.53 | 1.53 | 1.53 | 1.53 | 0.31 | 0.31 | 0.31 | 0.31 | 0.00 | 0.00 | 0.00 | 0.00 |
| Mexico | 0.20 | 0.13 | 0.11 | 0.11 | 2.70 | 1.98 | 2.48 | 2.48 | 0.54 | 0.26 | 0.27 | 0.27 | 0.00 | 0.00 | 0.01 | 5.00 |
| Burma | 0.19 | 0.18 | 0.16 | 0.19 | 1.26 | 1.24 | 1.24 | 1.24 | 0.23 | 0.23 | 0.20 | 0.24 | 0.04 | 19.19 | 0.01 | 4.42 |
| Others | 0.62 | 0.62 | 0.64 | 0.64 | 0.84 | 0.83 | 0.86 | 0.86 | 0.53 | 0.51 | 0.55 | 0.55 | 0.00 | 0.00 | 0.03 | 6.63 |

World and Selected Countries and Regions

Table 13 Peanut Area, Yield, and Production

| Country / Region | Area (Million hectares) | | | | Yield (Metric tons per hectare) | | | | Production (Million metric tons) | | | | Change in Production | | | |
|--------------------------|----------------------------|---------|---------------|-------|------------------------------------|---------|---------------|------|-------------------------------------|---------|---------------|-------|----------------------|---------|----------------|---------|
| | 2022/23 | Prel. | 2024/25 Proj. | | 2022/23 | Prel. | 2024/25 Proj. | | 2022/23 | Prel. | 2024/25 Proj. | | From last month | | From last year | |
| | | 2023/24 | May | Jun | | 2023/24 | May | Jun | | 2023/24 | May | Jun | MMT | Percent | MMT | Percent |
| World | 28.94 | 29.26 | 29.31 | 29.31 | 1.71 | 1.67 | 1.75 | 1.75 | 49.41 | 48.82 | 51.32 | 51.32 | 0.00 | 0.00 | 2.50 | 5.13 |
| United States | 0.56 | 0.64 | 0.64 | 0.64 | 4.50 | 4.19 | 4.49 | 4.49 | 2.51 | 2.67 | 2.88 | 2.88 | 0.00 | 0.00 | 0.20 | 7.63 |
| Total Foreign | 28.38 | 28.62 | 28.67 | 28.67 | 1.65 | 1.61 | 1.69 | 1.69 | 46.89 | 46.14 | 48.44 | 48.44 | 0.00 | 0.00 | 2.30 | 4.98 |
| China | 4.68 | 4.82 | 4.85 | 4.85 | 3.91 | 3.86 | 3.92 | 3.92 | 18.33 | 18.60 | 19.00 | 19.00 | 0.00 | 0.00 | 0.40 | 2.15 |
| Africa | | | | | | | | | | | | | | | | |
| Nigeria | 3.40 | 3.45 | 3.45 | 3.45 | 1.26 | 1.25 | 1.25 | 1.25 | 4.28 | 4.30 | 4.30 | 4.30 | 0.00 | 0.00 | 0.00 | 0.00 |
| Sudan | 3.07 | 3.01 | 2.50 | 2.50 | 0.86 | 0.46 | 0.80 | 0.80 | 2.64 | 1.39 | 2.00 | 2.00 | 0.00 | 0.00 | 0.61 | 44.30 |
| Senegal | 1.23 | 1.25 | 1.25 | 1.25 | 1.23 | 1.38 | 1.36 | 1.36 | 1.50 | 1.73 | 1.70 | 1.70 | 0.00 | 0.00 | -0.03 | -1.62 |
| Cameroon | 0.43 | 0.43 | 0.43 | 0.43 | 1.40 | 1.40 | 1.40 | 1.40 | 0.60 | 0.60 | 0.60 | 0.60 | 0.00 | 0.00 | 0.00 | 0.00 |
| Ghana | 0.37 | 0.37 | 0.37 | 0.37 | 1.65 | 1.62 | 1.62 | 1.62 | 0.61 | 0.60 | 0.60 | 0.60 | 0.00 | 0.00 | 0.00 | 0.00 |
| Chad | 0.76 | 0.76 | 0.76 | 0.76 | 1.10 | 1.09 | 1.09 | 1.09 | 0.83 | 0.83 | 0.83 | 0.83 | 0.00 | 0.00 | 0.00 | 0.00 |
| Malawi | 0.40 | 0.40 | 0.40 | 0.40 | 0.88 | 0.88 | 0.88 | 0.88 | 0.35 | 0.35 | 0.35 | 0.35 | 0.00 | 0.00 | 0.00 | 0.00 |
| Congo (Kinshasa) | 0.53 | 0.53 | 0.53 | 0.53 | 0.91 | 0.91 | 0.91 | 0.91 | 0.48 | 0.48 | 0.48 | 0.48 | 0.00 | 0.00 | 0.00 | 0.00 |
| Niger | 0.97 | 0.92 | 0.92 | 0.92 | 0.69 | 0.65 | 0.65 | 0.65 | 0.67 | 0.60 | 0.60 | 0.60 | 0.00 | 0.00 | 0.00 | 0.00 |
| Mali | 0.43 | 0.43 | 0.43 | 0.43 | 1.04 | 1.00 | 1.00 | 1.00 | 0.44 | 0.43 | 0.43 | 0.43 | 0.00 | 0.00 | 0.00 | 0.00 |
| Uganda | 0.35 | 0.35 | 0.35 | 0.35 | 0.57 | 0.57 | 0.57 | 0.57 | 0.20 | 0.20 | 0.20 | 0.20 | 0.00 | 0.00 | 0.00 | 0.00 |
| Burkina Faso | 0.63 | 0.64 | 0.64 | 0.64 | 0.89 | 0.90 | 0.90 | 0.90 | 0.56 | 0.58 | 0.58 | 0.58 | 0.00 | 0.00 | 0.00 | 0.00 |
| Guinea | 0.90 | 0.90 | 0.90 | 0.90 | 1.14 | 1.11 | 1.11 | 1.11 | 1.03 | 1.00 | 1.00 | 1.00 | 0.00 | 0.00 | 0.00 | 0.00 |
| Egypt | 0.06 | 0.06 | 0.06 | 0.06 | 3.20 | 3.20 | 3.20 | 3.20 | 0.21 | 0.21 | 0.21 | 0.21 | 0.00 | 0.00 | 0.00 | 0.00 |
| Central African Republic | 0.13 | 0.13 | 0.13 | 0.13 | 1.15 | 1.15 | 1.15 | 1.15 | 0.15 | 0.15 | 0.15 | 0.15 | 0.00 | 0.00 | 0.00 | 0.00 |
| South Africa | 0.03 | 0.04 | 0.04 | 0.04 | 2.29 | 1.88 | 2.00 | 2.00 | 0.07 | 0.08 | 0.08 | 0.08 | 0.00 | 0.00 | 0.01 | 6.67 |
| Mozambique | 0.38 | 0.38 | 0.38 | 0.38 | 0.34 | 0.34 | 0.34 | 0.34 | 0.13 | 0.13 | 0.13 | 0.13 | 0.00 | 0.00 | 0.00 | 0.00 |
| Cote d'Ivoire | 0.17 | 0.17 | 0.17 | 0.17 | 1.47 | 1.45 | 1.45 | 1.45 | 0.24 | 0.24 | 0.24 | 0.24 | 0.00 | 0.00 | 0.00 | 0.00 |
| Benin | 0.17 | 0.18 | 0.18 | 0.18 | 0.96 | 0.97 | 0.97 | 0.97 | 0.16 | 0.18 | 0.18 | 0.18 | 0.00 | 0.00 | 0.00 | 0.00 |
| South Asia | | | | | | | | | | | | | | | | |
| India | 4.96 | 5.00 | 5.50 | 5.50 | 1.27 | 1.20 | 1.29 | 1.29 | 6.30 | 6.00 | 7.10 | 7.10 | 0.00 | 0.00 | 1.10 | 18.33 |
| Pakistan | 0.13 | 0.13 | 0.13 | 0.13 | 0.88 | 0.88 | 0.88 | 0.88 | 0.12 | 0.12 | 0.12 | 0.12 | 0.00 | 0.00 | 0.00 | 0.00 |
| Southeast Asia | | | | | | | | | | | | | | | | |
| Indonesia | 0.54 | 0.52 | 0.50 | 0.50 | 1.72 | 1.69 | 1.68 | 1.68 | 0.93 | 0.88 | 0.84 | 0.84 | 0.00 | 0.00 | -0.04 | -4.55 |
| Burma | 1.07 | 1.07 | 1.08 | 1.08 | 1.55 | 1.59 | 1.63 | 1.63 | 1.65 | 1.70 | 1.75 | 1.75 | 0.00 | 0.00 | 0.05 | 2.94 |
| Vietnam | 0.15 | 0.15 | 0.14 | 0.14 | 2.63 | 2.62 | 2.64 | 2.64 | 0.40 | 0.38 | 0.37 | 0.37 | 0.00 | 0.00 | -0.01 | -3.39 |
| Thailand | 0.02 | 0.02 | 0.02 | 0.02 | 1.67 | 1.67 | 1.67 | 1.67 | 0.04 | 0.04 | 0.04 | 0.04 | 0.00 | 0.00 | 0.00 | 0.00 |
| South America | | | | | | | | | | | | | | | | |
| Argentina | 0.37 | 0.40 | 0.40 | 0.40 | 2.59 | 3.48 | 3.38 | 3.38 | 0.96 | 1.38 | 1.35 | 1.35 | 0.00 | 0.00 | -0.03 | -1.82 |
| Brazil | 0.20 | 0.26 | 0.26 | 0.26 | 3.95 | 3.02 | 3.46 | 3.46 | 0.79 | 0.77 | 0.90 | 0.90 | 0.00 | 0.00 | 0.13 | 16.88 |
| Mexico | 0.05 | 0.05 | 0.05 | 0.05 | 1.76 | 1.74 | 1.70 | 1.70 | 0.09 | 0.08 | 0.09 | 0.09 | 0.00 | 0.00 | 0.01 | 6.25 |
| Others | 1.80 | 1.81 | 1.85 | 1.85 | 1.18 | 1.19 | 1.21 | 1.21 | 2.13 | 2.15 | 2.25 | 2.25 | 0.00 | 0.00 | 0.10 | 4.70 |

Table 14 Sunflowerseed Area, Yield, and Production

| Country / Region | Area (Million hectares) | | | | Yield (Metric tons per hectare) | | | | Production (Million metric tons) | | | | Change in Production | | | |
|---------------------------------|----------------------------|------------------|--------------------------|-------|------------------------------------|------------------|--------------------------|------|-------------------------------------|------------------|--------------------------|-------|--------------------------------|------|-------------------------------|--------|
| | 2022/23 | Prel. 2023/24 | 2024/25 Proj. May Jun | | 2022/23 | Prel. 2023/24 | 2024/25 Proj. May Jun | | 2022/23 | Prel. 2023/24 | 2024/25 Proj. May Jun | | From last month MMT Percent | | From last year MMT Percent | |
| World | 28.30 | 27.61 | 27.87 | 27.87 | 1.87 | 1.99 | 1.99 | 1.99 | 52.78 | 54.86 | 55.43 | 55.43 | 0.00 | 0.00 | 0.56 | 1.03 |
| United States | 0.65 | 0.51 | 0.37 | 0.37 | 1.97 | 2.00 | 1.99 | 1.99 | 1.27 | 1.03 | 0.74 | 0.74 | 0.00 | 0.00 | -0.29 | -28.33 |
| Total Foreign | 27.65 | 27.09 | 27.50 | 27.50 | 1.86 | 1.99 | 1.99 | 1.99 | 51.51 | 53.84 | 54.69 | 54.69 | 0.00 | 0.00 | 0.86 | 1.59 |
| Former Soviet Union - 12 | | | | | | | | | | | | | | | | |
| Russia | 9.11 | 9.30 | 9.50 | 9.50 | 1.78 | 1.84 | 1.79 | 1.79 | 16.25 | 17.10 | 17.00 | 17.00 | 0.00 | 0.00 | -0.10 | -0.58 |
| Ukraine | 5.70 | 6.00 | 6.20 | 6.20 | 2.14 | 2.42 | 2.37 | 2.37 | 12.20 | 14.50 | 14.70 | 14.70 | 0.00 | 0.00 | 0.20 | 1.38 |
| Kazakhstan | 1.09 | 1.13 | 1.15 | 1.15 | 1.20 | 1.10 | 1.13 | 1.13 | 1.30 | 1.24 | 1.30 | 1.30 | 0.00 | 0.00 | 0.06 | 5.18 |
| European Union | 4.97 | 4.80 | 4.95 | 4.95 | 1.89 | 2.08 | 2.20 | 2.20 | 9.39 | 10.00 | 10.90 | 10.90 | 0.00 | 0.00 | 0.90 | 9.00 |
| South America | | | | | | | | | | | | | | | | |
| Argentina | 2.45 | 2.00 | 1.85 | 1.85 | 2.05 | 2.05 | 2.05 | 2.05 | 5.02 | 4.10 | 3.80 | 3.80 | 0.00 | 0.00 | -0.30 | -7.32 |
| Uruguay | 0.01 | 0.01 | 0.01 | 0.01 | 0.91 | 0.92 | 1.00 | 1.00 | 0.01 | 0.01 | 0.01 | 0.01 | 0.00 | 0.00 | 0.00 | -9.09 |
| Bolivia | 0.23 | 0.24 | 0.25 | 0.25 | 1.39 | 1.38 | 1.36 | 1.36 | 0.32 | 0.33 | 0.34 | 0.34 | 0.00 | 0.00 | 0.01 | 3.03 |
| Brazil | 0.06 | 0.06 | 0.06 | 0.06 | 1.52 | 1.46 | 1.50 | 1.50 | 0.09 | 0.09 | 0.09 | 0.09 | 0.00 | 0.00 | 0.00 | 1.12 |
| Paraguay | 0.03 | 0.02 | 0.03 | 0.03 | 1.64 | 1.63 | 1.60 | 1.60 | 0.04 | 0.04 | 0.04 | 0.04 | 0.00 | 0.00 | 0.00 | 2.56 |
| China | 0.62 | 0.60 | 0.55 | 0.55 | 2.79 | 2.83 | 2.91 | 2.91 | 1.74 | 1.70 | 1.60 | 1.60 | 0.00 | 0.00 | -0.10 | -5.88 |
| South Asia | | | | | | | | | | | | | | | | |
| India | 0.36 | 0.15 | 0.18 | 0.18 | 0.59 | 0.75 | 0.63 | 0.63 | 0.22 | 0.11 | 0.11 | 0.11 | 0.00 | 0.00 | 0.00 | 0.89 |
| Pakistan | 0.07 | 0.08 | 0.08 | 0.08 | 1.72 | 1.35 | 1.31 | 1.31 | 0.12 | 0.11 | 0.11 | 0.11 | 0.00 | 0.00 | 0.00 | -2.78 |
| Middle East | | | | | | | | | | | | | | | | |
| Turkey | 0.79 | 0.70 | 0.69 | 0.69 | 2.41 | 2.21 | 2.43 | 2.43 | 1.90 | 1.55 | 1.68 | 1.68 | 0.00 | 0.00 | 0.13 | 8.06 |
| Iran | 0.04 | 0.04 | 0.04 | 0.04 | 1.02 | 1.05 | 1.07 | 1.07 | 0.04 | 0.04 | 0.05 | 0.05 | 0.00 | 0.00 | 0.00 | 4.65 |
| Israel | 0.00 | 0.00 | 0.00 | 0.00 | 2.00 | 4.00 | 4.00 | 4.00 | 0.00 | 0.00 | 0.00 | 0.00 | 0.00 | 0.00 | 0.00 | 0.00 |
| Africa | | | | | | | | | | | | | | | | |
| Egypt | 0.01 | 0.01 | 0.01 | 0.01 | 2.75 | 2.63 | 2.75 | 2.75 | 0.02 | 0.02 | 0.02 | 0.02 | 0.00 | 0.00 | 0.00 | 4.76 |
| Morocco | 0.03 | 0.02 | 0.02 | 0.02 | 1.11 | 1.27 | 1.17 | 1.17 | 0.03 | 0.03 | 0.03 | 0.03 | 0.00 | 0.00 | 0.00 | 0.00 |
| South Africa | 0.56 | 0.53 | 0.54 | 0.54 | 1.29 | 1.23 | 1.30 | 1.30 | 0.72 | 0.65 | 0.70 | 0.70 | 0.00 | 0.00 | 0.05 | 7.69 |
| Burma | 0.60 | 0.60 | 0.60 | 0.60 | 0.65 | 0.65 | 0.65 | 0.65 | 0.39 | 0.39 | 0.39 | 0.39 | 0.00 | 0.00 | 0.00 | 0.00 |
| Canada | 0.04 | 0.04 | 0.03 | 0.03 | 2.21 | 2.30 | 2.18 | 2.18 | 0.08 | 0.09 | 0.07 | 0.07 | 0.00 | 0.00 | -0.02 | -21.74 |
| Australia | 0.03 | 0.03 | 0.02 | 0.02 | 1.48 | 1.28 | 1.50 | 1.50 | 0.04 | 0.03 | 0.03 | 0.03 | 0.00 | 0.00 | 0.00 | -6.25 |
| Others | 0.86 | 0.73 | 0.73 | 0.73 | 1.83 | 2.33 | 2.36 | 2.36 | 1.58 | 1.70 | 1.73 | 1.73 | 0.00 | 0.00 | 0.03 | 1.53 |

World and Selected Countries and Regions

Table 15 Rapeseed Area, Yield, and Production

| Country / Region | Area (Million hectares) | | | | Yield (Metric tons per hectare) | | | | Production (Million metric tons) | | | | Change in Production | | | |
|---------------------------------|----------------------------|---------|---------------|-------|------------------------------------|---------|---------------|------|-------------------------------------|---------|---------------|-------|----------------------|---------|----------------|---------|
| | Prel. | | 2024/25 Proj. | | Prel. | | 2024/25 Proj. | | Prel. | | 2024/25 Proj. | | From last month | | From last year | |
| | 2022/23 | 2023/24 | May | Jun | 2022/23 | 2023/24 | May | Jun | 2022/23 | 2023/24 | May | Jun | MMT | Percent | MMT | Percent |
| World | 41.95 | 42.60 | 42.58 | 41.98 | 2.12 | 2.08 | 2.07 | 2.07 | 88.85 | 88.74 | 88.34 | 87.07 | -1.28 | -1.44 | -1.68 | -1.89 |
| United States | 0.88 | 0.94 | 0.93 | 0.93 | 1.98 | 2.01 | 2.02 | 2.02 | 1.74 | 1.90 | 1.89 | 1.89 | 0.00 | 0.00 | -0.01 | -0.53 |
| Total Foreign | 41.07 | 41.65 | 41.65 | 41.05 | 2.12 | 2.08 | 2.08 | 2.08 | 87.11 | 86.85 | 86.46 | 85.18 | -1.28 | -1.47 | -1.67 | -1.92 |
| European Union | 5.92 | 6.22 | 5.85 | 5.85 | 3.31 | 3.22 | 3.25 | 3.21 | 19.61 | 20.00 | 19.00 | 18.75 | -0.25 | -1.32 | -1.25 | -6.25 |
| United Kingdom | 0.37 | 0.39 | 0.28 | 0.28 | 3.73 | 3.11 | 3.21 | 3.13 | 1.36 | 1.22 | 0.90 | 0.88 | -0.03 | -2.78 | -0.34 | -28.04 |
| Switzerland | 0.03 | 0.03 | 0.03 | 0.03 | 3.68 | 3.52 | 3.52 | 3.52 | 0.09 | 0.09 | 0.09 | 0.09 | 0.00 | 0.00 | 0.00 | 0.00 |
| Canada | 8.60 | 8.86 | 8.70 | 8.70 | 2.17 | 2.12 | 2.25 | 2.25 | 18.70 | 18.80 | 19.60 | 19.60 | 0.00 | 0.00 | 0.80 | 4.26 |
| China | 7.25 | 7.35 | 7.40 | 7.40 | 2.14 | 2.10 | 2.11 | 2.11 | 15.53 | 15.40 | 15.60 | 15.60 | 0.00 | 0.00 | 0.20 | 1.30 |
| South Asia | | | | | | | | | | | | | | | | |
| India | 8.85 | 9.25 | 9.30 | 9.30 | 1.28 | 1.35 | 1.30 | 1.30 | 11.30 | 12.50 | 12.10 | 12.10 | 0.00 | 0.00 | -0.40 | -3.20 |
| Pakistan | 0.51 | 0.38 | 0.30 | 0.30 | 1.46 | 1.46 | 1.50 | 1.50 | 0.74 | 0.56 | 0.45 | 0.45 | 0.00 | 0.00 | -0.11 | -19.21 |
| Bangladesh | 0.81 | 0.80 | 1.10 | 1.10 | 1.30 | 1.29 | 1.30 | 1.30 | 1.05 | 1.03 | 1.43 | 1.43 | 0.00 | 0.00 | 0.40 | 38.83 |
| Former Soviet Union - 12 | | | | | | | | | | | | | | | | |
| Russia | 2.27 | 2.05 | 2.20 | 2.20 | 1.89 | 2.05 | 1.95 | 1.95 | 4.30 | 4.20 | 4.30 | 4.30 | 0.00 | 0.00 | 0.10 | 2.38 |
| Ukraine | 1.23 | 1.60 | 1.35 | 1.35 | 2.85 | 2.97 | 2.74 | 2.74 | 3.50 | 4.75 | 3.70 | 3.70 | 0.00 | 0.00 | -1.05 | -22.11 |
| Belarus | 0.36 | 0.40 | 0.48 | 0.48 | 2.22 | 2.25 | 2.14 | 2.14 | 0.80 | 0.90 | 1.03 | 1.03 | 0.00 | 0.00 | 0.13 | 13.89 |
| Kazakhstan | 0.13 | 0.09 | 0.10 | 0.10 | 1.48 | 1.32 | 1.35 | 1.35 | 0.19 | 0.12 | 0.14 | 0.14 | 0.00 | 0.00 | 0.01 | 9.76 |
| Australia | 3.90 | 3.50 | 3.80 | 3.20 | 2.12 | 1.63 | 1.71 | 1.72 | 8.27 | 5.70 | 6.50 | 5.50 | -1.00 | -15.38 | -0.20 | -3.51 |
| South America | | | | | | | | | | | | | | | | |
| Chile | 0.03 | 0.04 | 0.04 | 0.04 | 3.79 | 3.82 | 3.86 | 3.86 | 0.13 | 0.15 | 0.14 | 0.14 | 0.00 | 0.00 | -0.01 | -6.90 |
| Paraguay | 0.07 | 0.07 | 0.08 | 0.08 | 1.77 | 1.50 | 1.53 | 1.53 | 0.12 | 0.11 | 0.12 | 0.12 | 0.00 | 0.00 | 0.01 | 9.52 |
| Ethiopia | 0.03 | 0.03 | 0.03 | 0.03 | 1.80 | 1.80 | 1.80 | 1.80 | 0.05 | 0.05 | 0.05 | 0.05 | 0.00 | 0.00 | 0.00 | 0.00 |
| Others | 0.72 | 0.61 | 0.63 | 0.63 | 1.91 | 2.13 | 2.12 | 2.12 | 1.38 | 1.29 | 1.33 | 1.33 | 0.00 | 0.00 | 0.04 | 3.34 |

World and Selected Countries and Regions

Table 16 Copra, Palm Kernel, and Palm Oil Production

| Country / Region | Production (Million metric tons) | | | | Change in Production | | | |
|-----------------------------|-------------------------------------|---------|---------------|-------|----------------------|---------|----------------|---------|
| | 2022/23 | Prel. | 2024/25 Proj. | | From last month | | From last year | |
| | | 2023/24 | May | Jun | MMT | Percent | MMT | Percent |
| Oilseed, Copra | | | | | | | | |
| Philippines | 2.60 | 2.90 | 2.50 | 2.50 | 0.00 | 0.00 | -0.40 | -13.79 |
| Indonesia | 1.68 | 1.69 | 1.68 | 1.68 | 0.00 | 0.00 | -0.01 | -0.59 |
| India | 0.94 | 0.94 | 0.94 | 0.94 | 0.00 | 0.00 | 0.00 | 0.00 |
| Vietnam | 0.29 | 0.29 | 0.29 | 0.29 | 0.00 | 0.00 | 0.00 | 0.00 |
| Papua New Guinea | 0.10 | 0.09 | 0.10 | 0.10 | 0.00 | 0.00 | 0.01 | 11.11 |
| Sri Lanka | 0.07 | 0.07 | 0.07 | 0.07 | 0.00 | 0.00 | 0.00 | 0.00 |
| Thailand | 0.07 | 0.07 | 0.07 | 0.07 | 0.00 | 0.00 | 0.00 | 0.00 |
| Mexico | 0.05 | 0.05 | 0.05 | 0.05 | 0.00 | 0.00 | 0.00 | 0.00 |
| Cote d'Ivoire | 0.03 | 0.03 | 0.03 | 0.03 | 0.00 | 0.00 | 0.00 | 0.00 |
| Malaysia | 0.03 | 0.03 | 0.03 | 0.03 | 0.00 | 0.00 | 0.00 | 0.00 |
| World | 6.00 | 6.21 | 5.81 | 5.81 | 0.00 | 0.00 | -0.40 | -6.44 |
| Oilseed, Palm Kernel | | | | | | | | |
| Indonesia | 12.00 | 12.20 | 12.20 | 12.20 | 0.00 | 0.00 | 0.00 | 0.00 |
| Malaysia | 4.49 | 4.70 | 4.70 | 4.70 | 0.00 | 0.00 | 0.00 | 0.00 |
| Nigeria | 0.90 | 1.10 | 1.10 | 1.10 | 0.00 | 0.00 | 0.00 | 0.00 |
| Thailand | 0.86 | 0.86 | 0.87 | 0.87 | 0.00 | 0.00 | 0.01 | 1.16 |
| Colombia | 0.33 | 0.35 | 0.35 | 0.35 | 0.00 | 0.00 | 0.00 | 0.00 |
| Guatemala | 0.18 | 0.18 | 0.19 | 0.19 | 0.00 | 0.00 | 0.00 | 0.00 |
| Papua New Guinea | 0.17 | 0.18 | 0.18 | 0.18 | 0.00 | 0.00 | 0.00 | 0.00 |
| Brazil | 0.15 | 0.16 | 0.16 | 0.16 | 0.00 | 0.00 | 0.00 | 0.00 |
| Honduras | 0.16 | 0.16 | 0.16 | 0.16 | 0.00 | 0.00 | 0.00 | 0.00 |
| Cameroon | 0.15 | 0.15 | 0.15 | 0.15 | 0.00 | 0.00 | 0.00 | 0.00 |
| World | 20.06 | 20.70 | 20.74 | 20.72 | -0.02 | -0.10 | 0.02 | 0.10 |
| Oil, Palm | | | | | | | | |
| Indonesia | 46.50 | 47.00 | 47.50 | 47.50 | 0.00 | 0.00 | 0.50 | 1.06 |
| Malaysia | 18.39 | 19.00 | 19.00 | 19.00 | 0.00 | 0.00 | 0.00 | 0.00 |
| Thailand | 3.33 | 3.28 | 3.36 | 3.36 | 0.00 | 0.00 | 0.08 | 2.44 |
| Colombia | 1.80 | 1.90 | 1.95 | 1.95 | 0.00 | 0.00 | 0.05 | 2.63 |
| Nigeria | 1.40 | 1.50 | 1.50 | 1.50 | 0.00 | 0.00 | 0.00 | 0.00 |
| Guatemala | 0.91 | 0.92 | 0.95 | 0.95 | 0.00 | 0.00 | 0.02 | 2.17 |
| Papua New Guinea | 0.80 | 0.82 | 0.83 | 0.83 | 0.00 | 0.00 | 0.01 | 1.22 |
| Cote d'Ivoire | 0.60 | 0.60 | 0.60 | 0.60 | 0.00 | 0.00 | 0.00 | 0.00 |
| Honduras | 0.60 | 0.60 | 0.60 | 0.60 | 0.00 | 0.00 | 0.00 | 0.00 |
| Brazil | 0.57 | 0.59 | 0.60 | 0.60 | 0.00 | 0.00 | 0.02 | 3.45 |
| World | 77.96 | 79.28 | 80.03 | 79.99 | -0.04 | -0.05 | 0.71 | 0.90 |

World and Selected Countries and Regions

Table 17 Cotton Area, Yield, and Production

| Country / Region | Area (Million hectares) | | | | Yield (Kilograms per hectare) | | | | Production (Million 480 lb. bales) | | | | Change in Production | | | |
|---------------------------------|----------------------------|---------|---------------|-------|----------------------------------|---------|---------------|-------|---------------------------------------|---------|---------------|--------|----------------------|---------|----------------|---------|
| | Prel. | | 2024/25 Proj. | | Prel. | | 2024/25 Proj. | | Prel. | | 2024/25 Proj. | | From last month | | From last year | |
| | 2022/23 | 2023/24 | May | Jun | 2022/23 | 2023/24 | May | Jun | 2022/23 | 2023/24 | May | Jun | MBales | Percent | MBales | Percent |
| World | 31.76 | 31.52 | 32.44 | 32.47 | 798 | 786 | 799 | 799 | 116.41 | 113.78 | 119.05 | 119.14 | 0.09 | 0.08 | 5.35 | 4.70 |
| United States | 2.95 | 2.61 | 3.69 | 3.69 | 1,068 | 1,008 | 943 | 943 | 14.47 | 12.07 | 16.00 | 16.00 | 0.00 | 0.00 | 3.93 | 32.60 |
| Total Foreign | 28.81 | 28.91 | 28.75 | 28.78 | 770 | 766 | 780 | 780 | 101.95 | 101.72 | 103.05 | 103.14 | 0.09 | 0.09 | 1.42 | 1.39 |
| South Asia | | | | | | | | | | | | | | | | |
| India | 12.93 | 12.70 | 12.40 | 12.40 | 443 | 449 | 439 | 439 | 26.30 | 26.20 | 25.00 | 25.00 | 0.00 | 0.00 | -1.20 | -4.58 |
| Pakistan | 1.80 | 2.40 | 2.40 | 2.40 | 472 | 608 | 590 | 590 | 3.90 | 6.70 | 6.50 | 6.50 | 0.00 | 0.00 | -0.20 | -2.99 |
| China | 3.15 | 2.90 | 2.85 | 2.85 | 2,122 | 2,065 | 2,063 | 2,063 | 30.70 | 27.50 | 27.00 | 27.00 | 0.00 | 0.00 | -0.50 | -1.82 |
| South America | | | | | | | | | | | | | | | | |
| Brazil | 1.60 | 1.66 | 1.94 | 1.94 | 1,595 | 1,911 | 1,874 | 1,874 | 11.72 | 14.57 | 16.70 | 16.70 | 0.00 | 0.00 | 2.13 | 14.62 |
| Argentina | 0.51 | 0.56 | 0.53 | 0.53 | 495 | 603 | 643 | 643 | 1.17 | 1.55 | 1.55 | 1.55 | 0.00 | 0.00 | 0.00 | 0.00 |
| Paraguay | 0.05 | 0.06 | 0.07 | 0.07 | 890 | 812 | 837 | 837 | 0.18 | 0.21 | 0.25 | 0.25 | 0.00 | 0.00 | 0.05 | 21.95 |
| Africa | | | | | | | | | | | | | | | | |
| Burkina Faso | 0.62 | 0.54 | 0.55 | 0.55 | 273 | 313 | 317 | 317 | 0.78 | 0.77 | 0.80 | 0.80 | 0.00 | 0.00 | 0.03 | 3.90 |
| Mali | 0.60 | 0.71 | 0.72 | 0.72 | 269 | 399 | 408 | 408 | 0.74 | 1.30 | 1.35 | 1.35 | 0.00 | 0.00 | 0.05 | 3.85 |
| Cote d'Ivoire | 0.41 | 0.40 | 0.40 | 0.40 | 236 | 411 | 463 | 463 | 0.45 | 0.75 | 0.85 | 0.85 | 0.00 | 0.00 | 0.11 | 14.09 |
| Benin | 0.57 | 0.51 | 0.51 | 0.51 | 418 | 446 | 446 | 446 | 1.10 | 1.05 | 1.05 | 1.05 | 0.00 | 0.00 | 0.00 | 0.00 |
| Egypt | 0.14 | 0.11 | 0.10 | 0.10 | 661 | 693 | 675 | 675 | 0.43 | 0.35 | 0.31 | 0.31 | 0.00 | 0.00 | -0.04 | -11.43 |
| Cameroon | 0.23 | 0.25 | 0.25 | 0.25 | 563 | 587 | 587 | 587 | 0.60 | 0.66 | 0.66 | 0.66 | 0.00 | 0.00 | 0.00 | 0.00 |
| Tanzania | 0.36 | 0.47 | 0.47 | 0.47 | 184 | 220 | 220 | 220 | 0.31 | 0.47 | 0.47 | 0.47 | 0.00 | 0.00 | 0.00 | 0.00 |
| Nigeria | 0.27 | 0.27 | 0.27 | 0.27 | 282 | 282 | 282 | 282 | 0.35 | 0.35 | 0.35 | 0.35 | 0.00 | 0.00 | 0.00 | 0.00 |
| Zimbabwe | 0.24 | 0.24 | 0.24 | 0.24 | 195 | 195 | 195 | 195 | 0.22 | 0.22 | 0.22 | 0.22 | 0.00 | 0.00 | 0.00 | 0.00 |
| Ethiopia | 0.05 | 0.06 | 0.06 | 0.06 | 726 | 713 | 713 | 713 | 0.18 | 0.18 | 0.18 | 0.18 | 0.00 | 0.00 | 0.00 | 0.00 |
| Former Soviet Union - 12 | | | | | | | | | | | | | | | | |
| Uzbekistan | 1.05 | 1.03 | 1.00 | 1.00 | 664 | 613 | 631 | 631 | 3.20 | 2.90 | 2.90 | 2.90 | 0.00 | 0.00 | 0.00 | 0.00 |
| Turkmenistan | 0.55 | 0.55 | 0.55 | 0.55 | 356 | 356 | 356 | 356 | 0.90 | 0.90 | 0.90 | 0.90 | 0.00 | 0.00 | 0.00 | 0.00 |
| Tajikistan | 0.17 | 0.19 | 0.18 | 0.18 | 615 | 647 | 641 | 641 | 0.48 | 0.57 | 0.53 | 0.53 | 0.00 | 0.00 | -0.04 | -6.19 |
| Kazakhstan | 0.13 | 0.12 | 0.12 | 0.12 | 584 | 558 | 526 | 526 | 0.34 | 0.30 | 0.29 | 0.29 | 0.00 | 0.00 | -0.01 | -3.33 |
| Middle East | | | | | | | | | | | | | | | | |
| Turkey | 0.56 | 0.44 | 0.49 | 0.49 | 1,922 | 1,583 | 1,796 | 1,796 | 4.90 | 3.20 | 4.00 | 4.00 | 0.00 | 0.00 | 0.80 | 25.00 |
| Syria | 0.03 | 0.03 | 0.03 | 0.03 | 1,161 | 1,161 | 1,161 | 1,161 | 0.16 | 0.16 | 0.16 | 0.16 | 0.00 | 0.00 | 0.00 | 0.00 |
| Iran | 0.12 | 0.10 | 0.10 | 0.10 | 977 | 762 | 871 | 871 | 0.53 | 0.35 | 0.40 | 0.40 | 0.00 | 0.00 | 0.05 | 14.29 |
| Australia | 0.65 | 0.57 | 0.55 | 0.55 | 1,943 | 1,910 | 1,979 | 1,979 | 5.80 | 5.00 | 5.00 | 5.00 | 0.00 | 0.00 | 0.00 | 0.00 |
| Mexico | 0.20 | 0.13 | 0.11 | 0.11 | 1,720 | 1,491 | 1,583 | 1,583 | 1.58 | 0.90 | 0.80 | 0.80 | 0.00 | 0.00 | -0.10 | -10.81 |
| Burma | 0.19 | 0.18 | 0.16 | 0.19 | 664 | 654 | 653 | 654 | 0.56 | 0.55 | 0.48 | 0.57 | 0.09 | 18.96 | 0.02 | 4.39 |
| Others | 1.65 | 1.76 | 1.73 | 1.73 | 579 | 505 | 549 | 549 | 4.39 | 4.09 | 4.36 | 4.36 | 0.00 | 0.00 | 0.27 | 6.51 |

World and Selected Countries and Regions

TABLE 18

The table below presents a record of the June projection and the final Estimate. Using world wheat production as an example, the "root mean square error" means that chances are 2 out of 3 that the current forecast will not be above or below the final estimate by more than 3 percent. Chances are 9 out of 10 (90% confidence level) that the difference will not exceed 5 percent. The average difference between the June projection and the final estimate is 15.9 million tons, ranging from 0.4 million to 32.2 million tons. The June projection has been below the estimate 26 times and above 17 times.

RELIABILITY OF PRODUCTION PROJECTIONS 1/

| COMMODITY AND REGION | Root mean square error | 90 percent confidence interval | Difference between forecast and final estimate | | | | |
|-------------------------|------------------------|--------------------------------|--|----------|---------|-------------|-------------|
| | | | Average | Smallest | Largest | Years | |
| | | | | | | Below final | Above final |
| | Percent | | ---Million metric tons--- | | | | |
| WHEAT | | | | | | | |
| World | 3.0 | 5.0 | 15.9 | 0.4 | 32.2 | 26 | 17 |
| U.S. | 6.2 | 10.4 | 2.8 | 0.0 | 8.4 | 24 | 19 |
| Foreign | 3.1 | 5.2 | 14.9 | 1.1 | 31.9 | 25 | 17 |
| COARSE GRAINS 2/ | | | | | | | |
| World | 3.5 | 6.0 | 26.7 | 0.6 | 103.3 | 23 | 20 |
| U.S. | 13.1 | 22.1 | 19.5 | 0.5 | 103.8 | 23 | 20 |
| Foreign | 2.7 | 4.5 | 14.5 | 0.4 | 45.6 | 21 | 21 |
| RICE (Milled) | | | | | | | |
| World | 2.3 | 3.9 | 6.9 | 0.3 | 21.8 | 27 | 16 |
| U.S. | 7.6 | 12.8 | 0.4 | 0.0 | 1.1 | 23 | 20 |
| Foreign | 2.3 | 3.9 | 6.8 | 0.4 | 21.9 | 26 | 16 |
| SOYBEANS | | | | | | | |
| World | NA | NA | 13.2 | 0.1 | 36.2 | 7 | 13 |
| U.S. | 8.9 | 15.1 | 5.0 | 0.0 | 16.2 | 22 | 21 |
| Foreign | NA | NA | 9.7 | 0.2 | 37.0 | 6 | 13 |
| COTTON | | | ---Million 480-lb. bales--- | | | | |
| World | 5.8 | 9.8 | 4.1 | 0.0 | 16.4 | 22 | 20 |
| U.S. | 12.6 | 21.3 | 1.6 | 0.1 | 5.7 | 20 | 23 |
| Foreign | 5.8 | 9.8 | 3.1 | 0.2 | 12.4 | 23 | 19 |
| UNITED STATES | | | -----Million bushels----- | | | | |
| <i>CORN</i> | 15.5 | 26.1 | 762 | 8 | 4,010 | 22 | 21 |
| <i>SORGHUM</i> | 24.7 | 41.7 | 84 | 0 | 228 | 21 | 21 |
| <i>BARLEY</i> | 14.7 | 24.7 | 26 | 1 | 206 | 17 | 26 |
| <i>OATS</i> | 23.5 | 39.6 | 28 | 1 | 231 | 8 | 35 |

1/ Marketing years 1981/82 through 2023/24 for grains, soybeans, and cotton. Final for grains, soybeans, and cotton is defined as the first November estimate following the marketing year for 1981/82 through 2022/23, and for 2023/24 the last month's estimate.

2/ Includes corn, sorghum, barley, oats, rye, millet, and mixed grain

June 2024

Global Market Analysis, FAS, USDA