



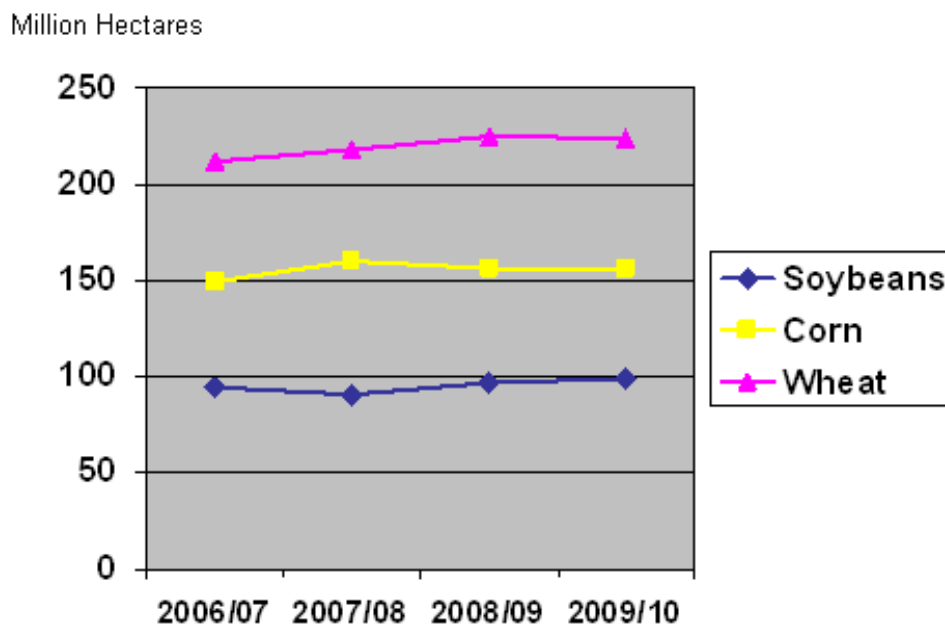
United States
Department of
Agriculture

Foreign
Agricultural
Service

Circular Series
WAP 05-09
May 2009

World Agricultural Production

World Wheat Area Down, Corn Steady, Soy Up



2009/10 – Initial Forecast

World 2009/10 Crop Area and Production Forecasts

The initial USDA country-level area and production estimates for 2009/10 grains, oilseeds, and cotton are provided this month. In previous years, only the initial grain estimates were released in May, but this year estimates for oilseeds and cotton are provided as well.

World wheat area for 2009/10 is estimated at 224 million hectares, down less than 1 percent from last year. International prices in September 2008, when many Northern Hemisphere wheat producers were deciding if they would plant, had declined from a year earlier while prices for corn and soybeans were stronger. Wheat production is forecast at 658 million metric tons, down

Approved by the World Agricultural Outlook Board

