



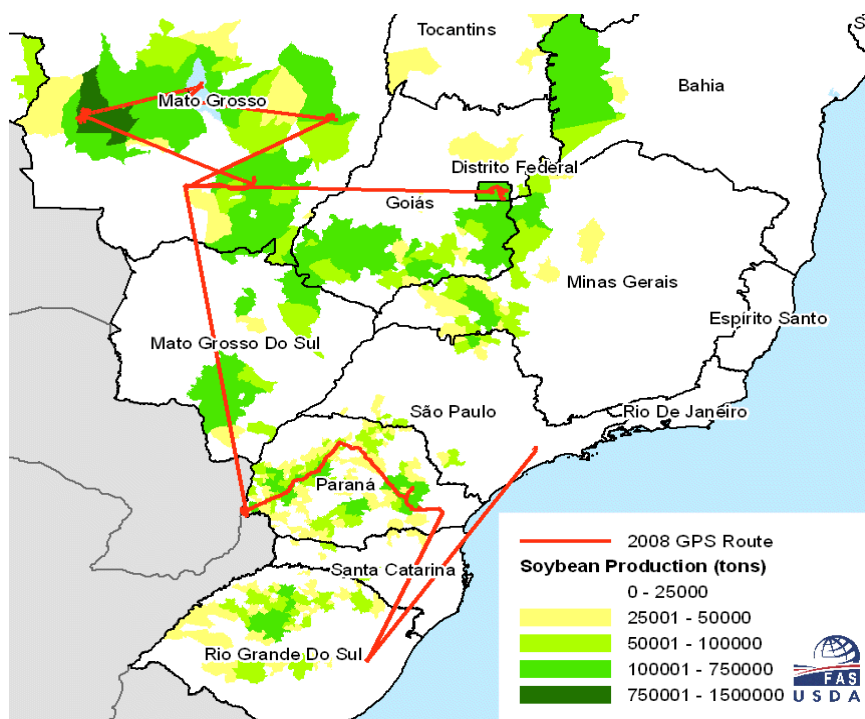
United States
Department of
Agriculture

Foreign
Agricultural
Service

Circular Series
WAP 03-08
March 2008

World Agricultural Production

Brazilian Soybeans: Second Consecutive Year of Record Production



Brazil Soybean Crop Production Regions, FAS Crop Assessment Travel from February 14 - March 5, 2008

Brazil soybean production for 2007/08 is forecast at a record 61.0 million tons, up 0.8 percent from February and up 3.4 percent from last year's record. Harvested area for 2007/08 is forecast at 21.3 million hectares, down 1 percent from last month but up 3 percent from last year.

Analysts from the USDA Foreign Agricultural Service conducted crop-assessment travel in the key soybean producing states of Mato Grosso, Parana, and Rio Grande do Sul from February 14 through March 5. Soybean yields are reportedly higher than last year in Mato Grosso and Parana, where harvest is in progress. Although the crop was planted two to three weeks late, and heavy rains during January and February delayed the launch of the harvest campaign, favorable weather is enabling field activity to proceed at a rapid pace. Yields in Rio Grande do Sol, where harvest has not yet begun, are expected to be lower than last year due to dryness

Approved by the World Agricultural Outlook Board

