



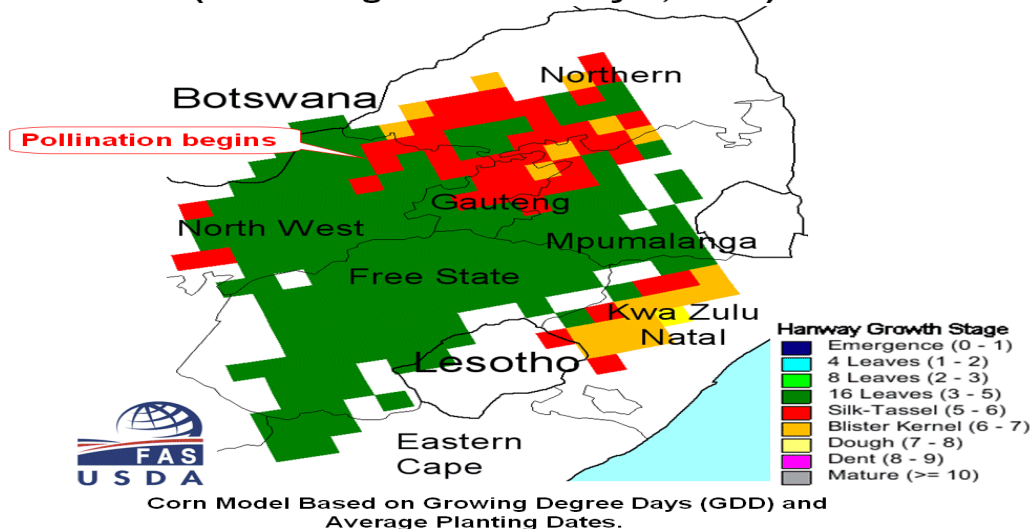
United States
Department of
Agriculture

Foreign
Agricultural
Service

Circular Series
WAP 02-08
February 2008

World Agricultural Production

Pollination Begins in South Africa's Maize Triangle (Corn Stage on February 5, 2008)



South Africa Set for Bumper 2007/08 Corn Harvest

South Africa's 2007/08 corn production is forecast at 11.0 million tons, up 1.0 million tons from last month and up 3.7 million from last year. Corn area is forecast at 3.2 million hectares, unchanged from last month and up 0.3 million or 10 percent from last year. The estimated yield of 3.44 MT/Ha is above the 5-year average yield of 3.00 MT/Ha, and above the 10-year trend of 3.32 MT/Ha.

Seasonal spring rains arrived on time and were above-average during the planting season from October through December. The abundant and well-distributed rains allowed farmers to plant at optimal planting dates, with the exception of one brief dry spell that occurred during the end of December. High corn prices and a La Niña forecast encouraged farmers to plant corn this year, as well as invest in more fertilizers than usual to boost yields. High corn prices also encouraged farmers to plant corn under irrigation, and irrigated area is forecast at a record high of approximately 220,000 hectares.

Approved by the World Agricultural Outlook Board

